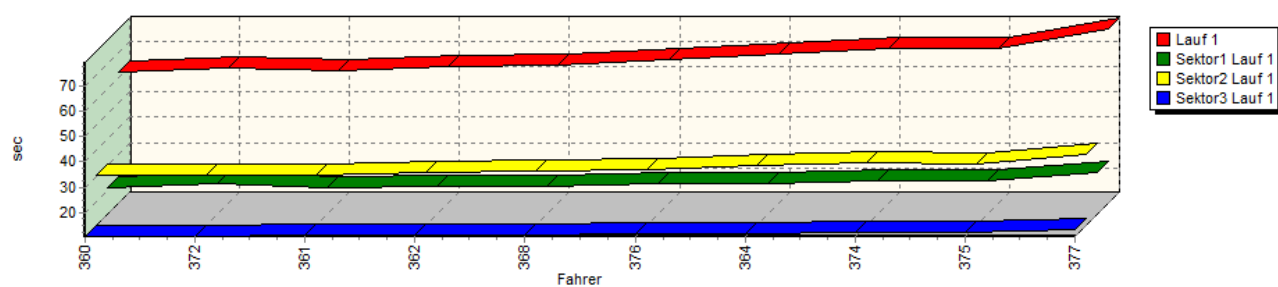


## Sektorzeiten & Speeds - Groupe E1+H/FS (DMSB) Classe 22c: +1400-1600 ccm

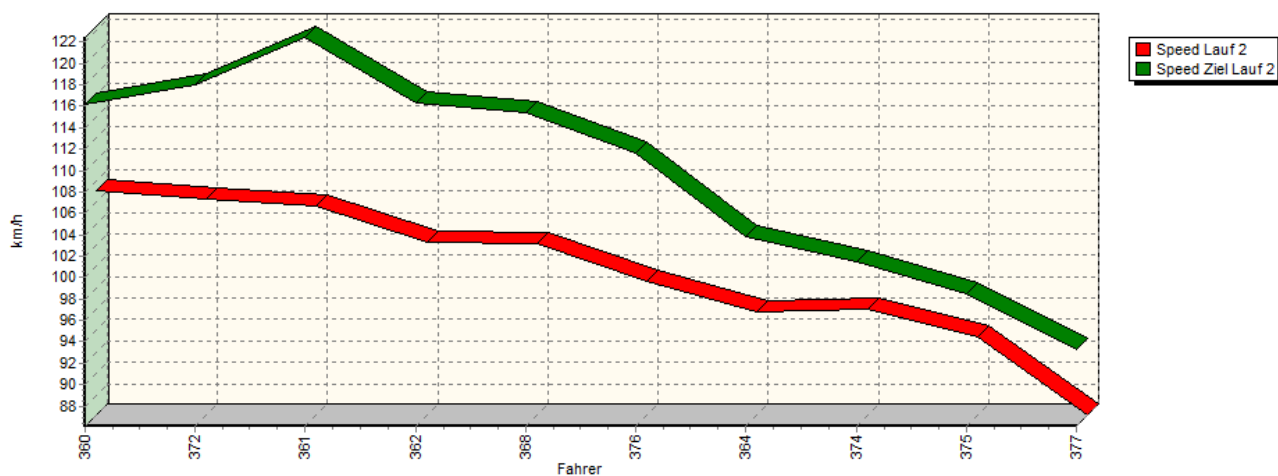
### Speed-Diagramm Lauf 1



### Sektor-Diagramm (Rest) Lauf 1

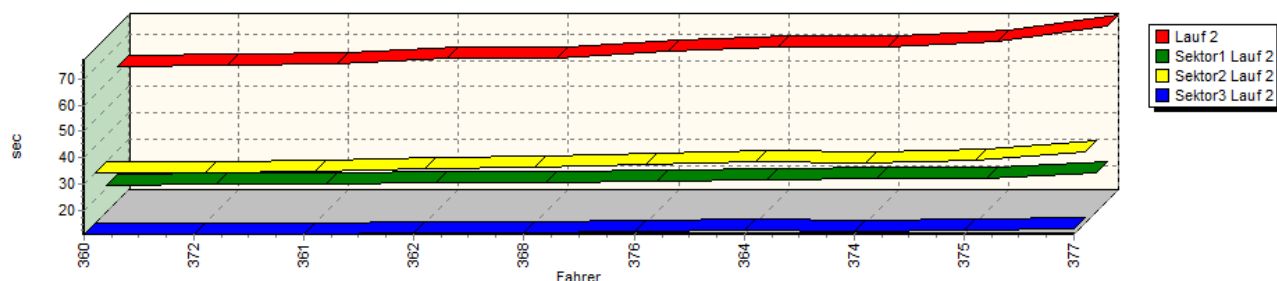


### Speed-Diagramm Lauf 2



## Sektorzeiten & Speeds - Groupe E1+H/FS (DMSB) Classe 22c: +1400-1600 ccm

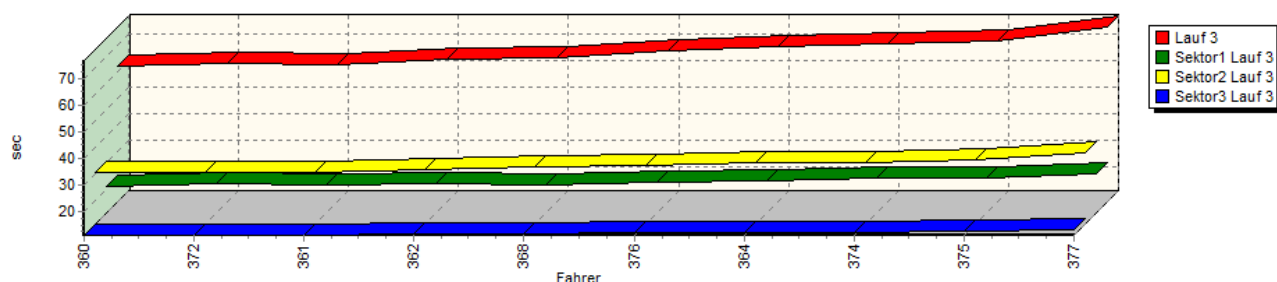
Sektor-Diagramm (Rest) Lauf 2



Speed-Diagramm Lauf 3



Sektor-Diagramm (Rest) Lauf 3



Rg.	Nr.	Sektor 1	Sektor 2	Sektor 3	Speed Ziel	Laufzeit	Speed (Lauf)	
1	360	<b>STELBERG André</b>		VW Schneider-RSB Corrado				
		Lauf 1:	00:21.078	00:30.181	00:10.677	119,36 km/h	01:01.936	107,53 km/h
		Lauf 2:	00:21.072	00:30.093	00:11.005	116,19 km/h	01:02.170	107,13 km/h
		Lauf 3:	00:21.025	00:30.279	00:10.926	119.40 km/h	01:02.230	107.02 km/h



## European Hill Race

Bergrennen Eschdorf

6. - 8. Mai 2016

Luxemburger Bergmeisterschaft für Tourenwagen 2016

Luxemburger Bergmeisterschaft für Sportwagen 2016

Deutsche Bergmeisterschaft 2016 / DMSB Berg-Cup 2016

KW Berg-Cup 2016 / NSU Bergpokal 2016 im KW Berg-Cup



### Sektorzeiten & Speeds - Groupe E1+H/FS (DMSB) Classe 22c: +1400-1600 ccm

Rg.	Nr.	Sektor 1	Sektor 2	Sektor 3	Speed Ziel	Laufzeit	Speed (Lauf)
2	372	<b>MARCHIONE Canio</b>	VW Scirocco				
		Lauf 1: 00:22.513	00:30.435	00:10.949	120,13 km/h	01:03.897	104,23 km/h
		Lauf 2: 00:21.772	00:29.968	00:10.950	117,99 km/h	01:02.690	106,24 km/h
		Lauf 3: 00:21.860	00:30.564	00:11.019	120,04 km/h	01:03.443	104,98 km/h
3	361	<b>SCHULTE Manfred</b>	Citroën Nemeth AX Kitcar				
		Lauf 1: 00:21.313	00:30.505	00:11.001	118,25 km/h	01:02.819	106,02 km/h
		Lauf 2: 00:21.340	00:30.808	00:10.894	122,43 km/h	01:03.042	105,64 km/h
		Lauf 3: 00:21.274	00:30.459	00:11.111	122,16 km/h	01:02.844	105,98 km/h
4	362	<b>HEINDRICHS Andy</b>	Opel Corsa A				
		Lauf 1: 00:21.673	00:31.413	00:11.152	116,94 km/h	01:04.238	103,68 km/h
		Lauf 2: 00:22.213	00:31.694	00:11.212	116,26 km/h	01:05.119	102,28 km/h
		Lauf 3: 00:21.885	00:31.399	00:11.349	117,63 km/h	01:04.633	103,04 km/h
5	368	<b>VOSS Andreas</b>	VW Mischky Golf				
		Lauf 1: 00:21.779	00:32.103	00:11.177	114,95 km/h	01:05.059	102,37 km/h
		Lauf 2: 00:21.806	00:32.254	00:11.178	115,43 km/h	01:05.238	102,09 km/h
		Lauf 3: 00:21.706	00:32.550	00:11.197	114,54 km/h	01:05.453	101,75 km/h
6	376	<b>SCHILTZ Max</b>	Ford Fiesta				
		Lauf 1: 00:22.819	00:32.703	00:11.605	108,05 km/h	01:07.127	99,22 km/h
		Lauf 2: 00:22.470	00:33.159	00:11.924	111,64 km/h	01:07.553	98,59 km/h
		Lauf 3: 00:22.754	00:33.060	00:12.164	110,40 km/h	01:07.978	97,97 km/h
7	364	<b>SCHULTE Benedikt</b>	Citroën Nemeth AX Sport				
		Lauf 1: 00:22.830	00:34.128	00:12.045	107,49 km/h	01:09.003	96,52 km/h
		Lauf 2: 00:22.992	00:34.371	00:12.238	103,88 km/h	01:09.601	95,69 km/h
		Lauf 3: 00:23.033	00:34.305	00:12.183	108,54 km/h	01:09.521	95,80 km/h
8	374	<b>DARAND Anthony</b>	Peugeot 106				
		Lauf 1: 00:23.589	00:35.510	00:12.253	106,67 km/h	01:11.352	93,34 km/h
		Lauf 2: 00:23.454	00:33.684	00:12.193	101,46 km/h	01:09.331	96,06 km/h
		Lauf 3: 00:24.120	00:34.302	00:12.011	107,89 km/h	01:10.433	94,56 km/h
9	375	<b>KRÜGER Thomas</b>	Honda Civic VTEC				
		Lauf 1: 00:24.063	00:34.993	00:12.242	97,90 km/h	01:11.298	93,41 km/h
		Lauf 2: 00:23.788	00:34.861	00:12.692	98,47 km/h	01:11.341	93,35 km/h
		Lauf 3: 00:23.893	00:35.254	00:12.766	98,09 km/h	01:11.913	92,61 km/h
10	377	<b>KOENIG Chris</b>	Peugeot 106 Rallye				
		Lauf 1: 00:27.331	00:38.494	00:13.282	89,63 km/h	01:19.107	84,19 km/h
		Lauf 2: 00:26.028	00:38.139	00:13.168	93,25 km/h	01:17.335	86,12 km/h
		Lauf 3: 00:25.977	00:37.856	00:13.119	93,58 km/h	01:16.952	86,55 km/h