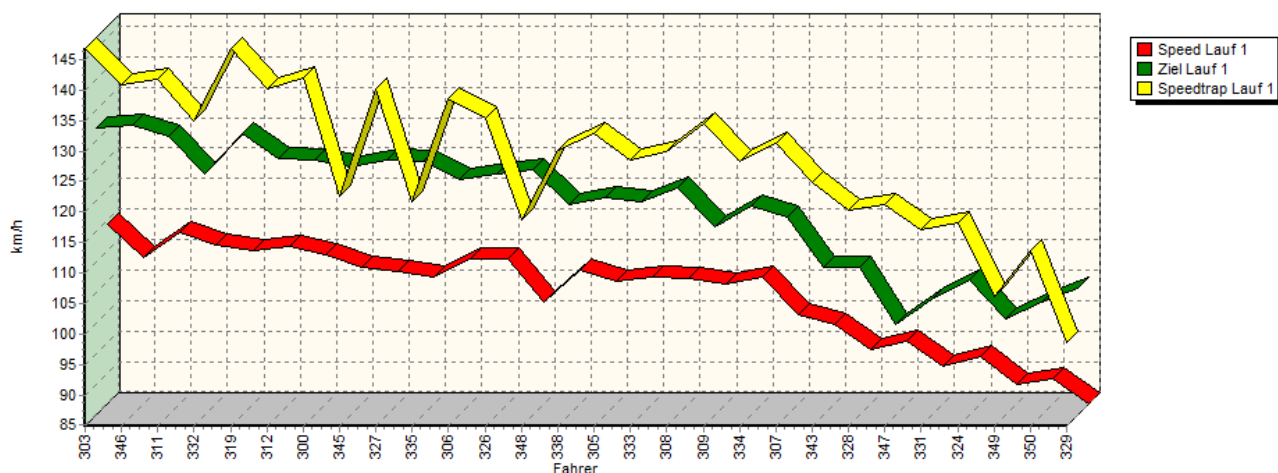
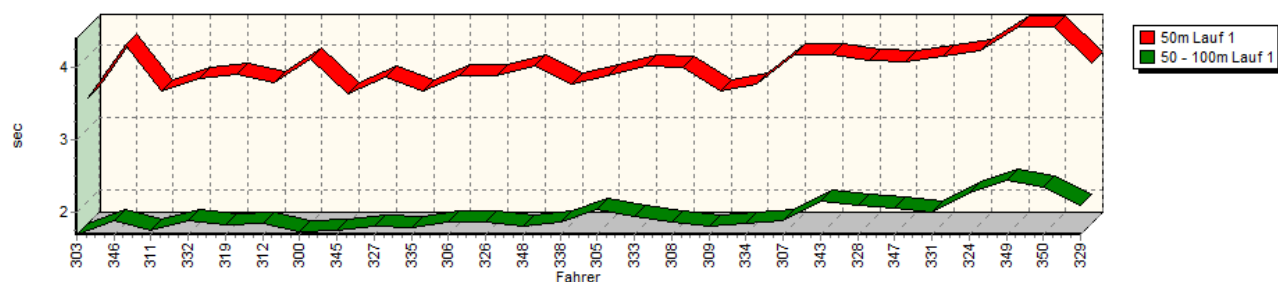


Sektorzeiten & Speeds - Training - Gruppe E1-FIA/E1-BERG/E1-ACL/H/FS bis 2000 ccm - Klasse

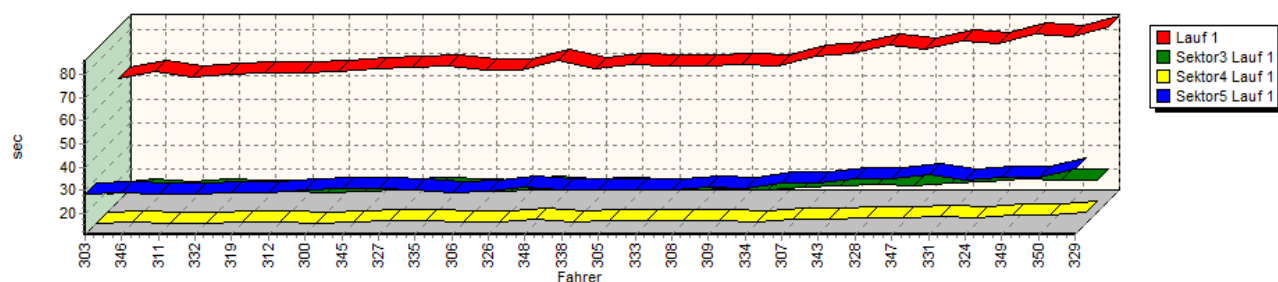
Speed-Diagramm Lauf 1



Sektor-Diagramm (Start) Lauf 1

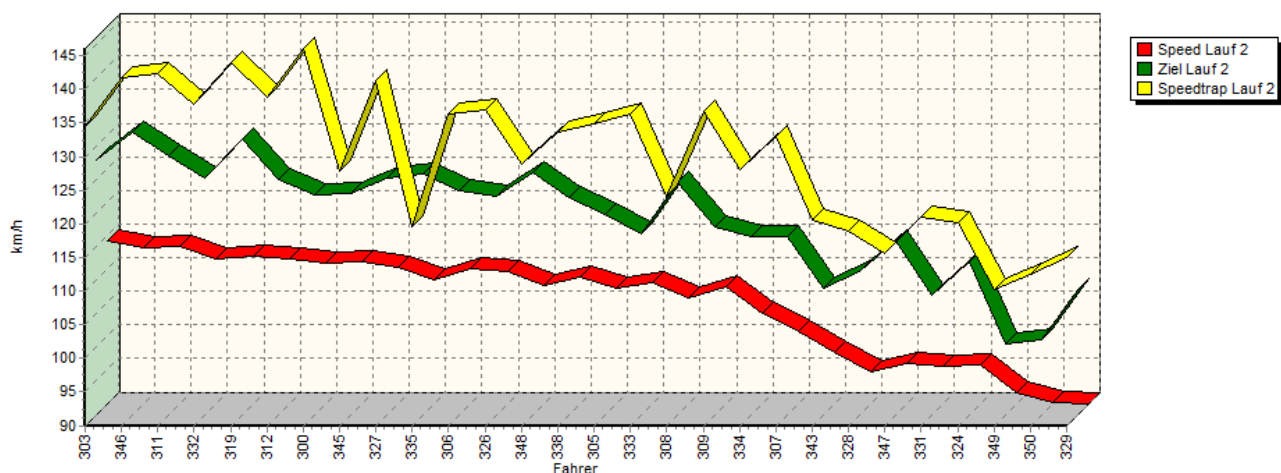


Sektor-Diagramm (Rest) Lauf 1

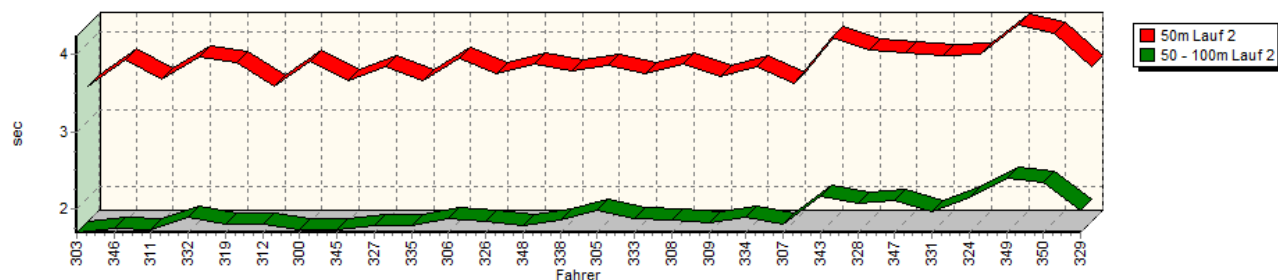


Sektorzeiten & Speeds - Training - Gruppe E1-FIA/E1-BERG/E1-ACL/H/FS bis 2000 ccm - Klasse

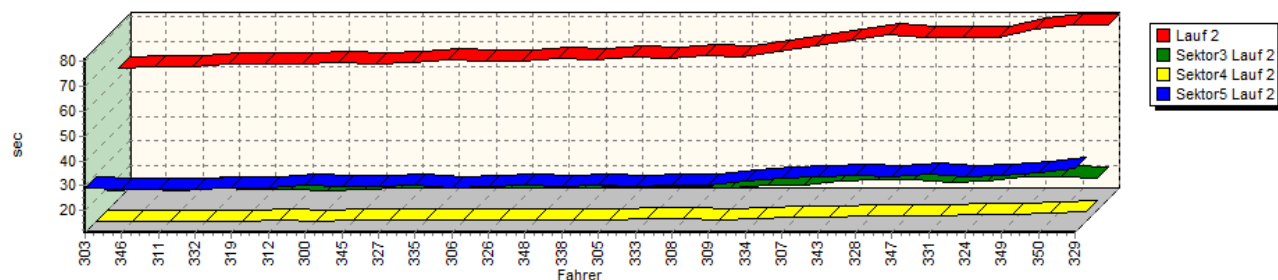
Speed-Diagramm Lauf 2



Sektor-Diagramm (Start) Lauf 2

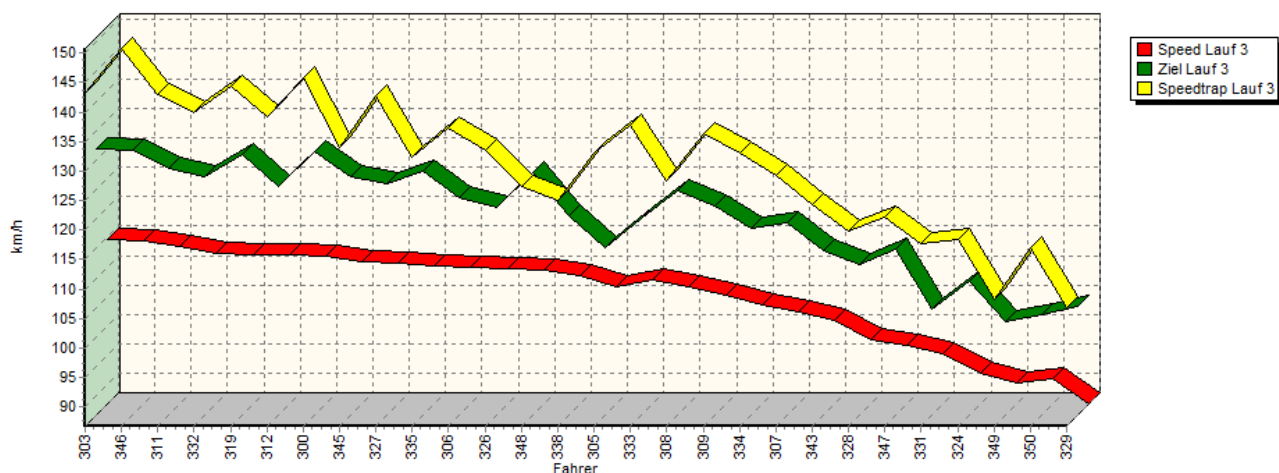


Sektor-Diagramm (Rest) Lauf 2

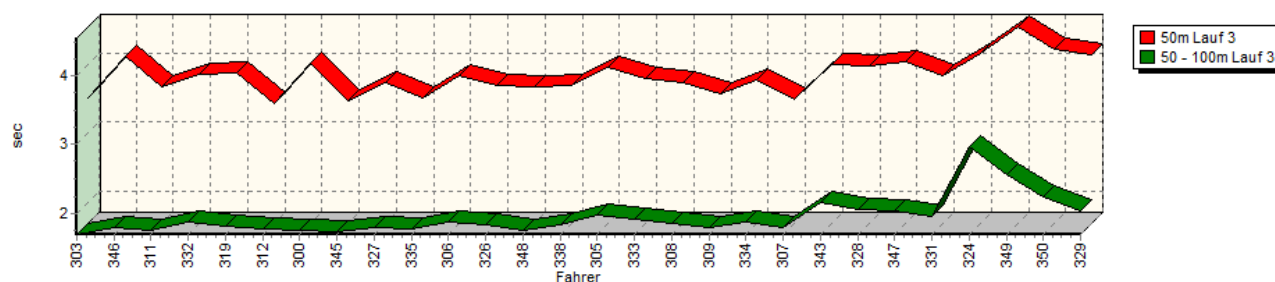


Sektorzeiten & Speeds - Training - Gruppe E1-FIA/E1-BERG/E1-ACL/H/FS bis 2000 ccm - Klasse

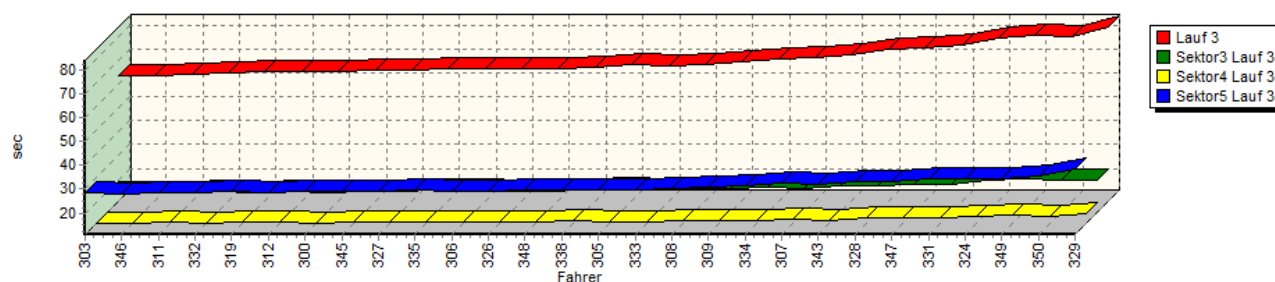
Speed-Diagramm Lauf 3



Sektor-Diagramm (Start) Lauf 3

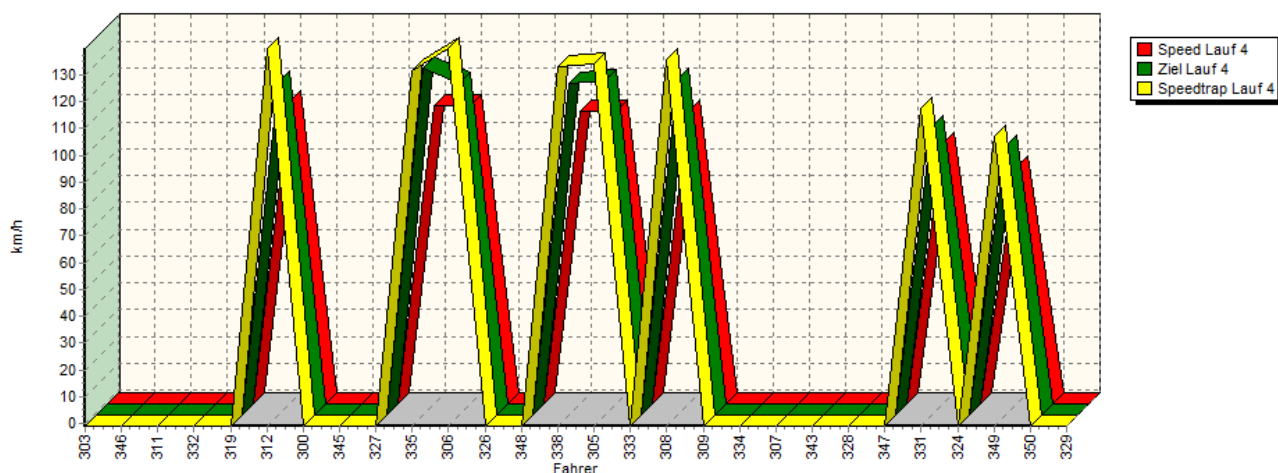


Sektor-Diagramm (Rest) Lauf 3

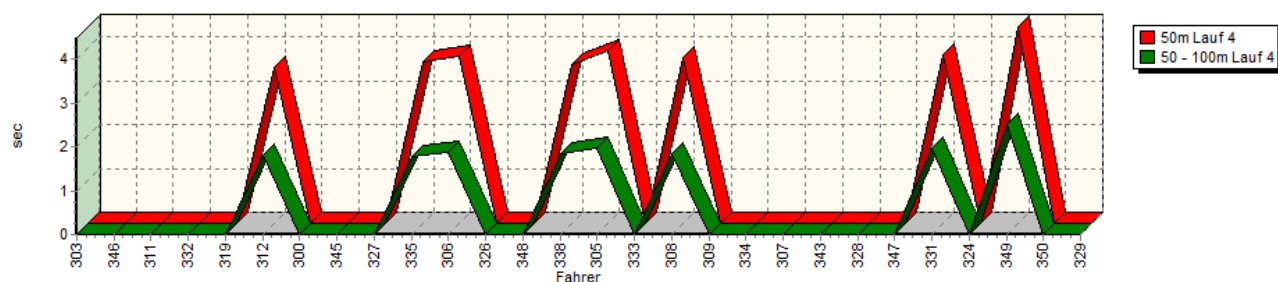


Sektorzeiten & Speeds - Training - Gruppe E1-FIA/E1-BERG/E1-ACL/H/FS bis 2000 ccm - Klasse

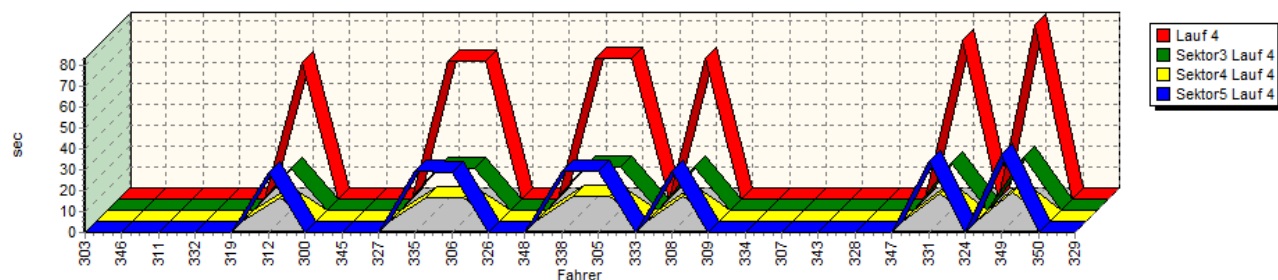
Speed-Diagramm Lauf 4



Sektor-Diagramm (Start) Lauf 4



Sektor-Diagramm (Rest) Lauf 4



| Rg. | Nr. | Sektor 1 | Sektor 2 | Sektor 3 | Sektor 4 | Speed Trap | Sektor 5 | Speed (Ziel) | Laufzeit | Speed (Lauf) |
|-----|-----|--|-----------|-----------|-----------|------------|-------------|--------------|-------------|-----------------------|
| 1 | 303 | SONDERBAUER Roman Opel Kadett C Coupé | | | | | | | | |
| | | Lauf 1: | 00:03.427 | 00:01.683 | 00:19.083 | 00:11.094 | 146,74 km/h | 00:28.553 | 132,04 km/h | 01:03.840 114,47 km/h |
| | | Lauf 2: | 00:03.437 | 00:01.689 | 00:18.830 | 00:11.187 | 134,48 km/h | 00:28.926 | 127,91 km/h | 01:04.069 114,06 km/h |
| | | Lauf 3: | 00:03.507 | 00:01.700 | 00:19.006 | 00:11.076 | 143,18 km/h | 00:28.421 | 131,84 km/h | 01:03.710 114,71 km/h |
| | | Lauf 4: | * | * | * | * | * km/h | * | * km/h | * km/h |

Sektorzeiten & Speeds - Training - Gruppe E1-FIA/E1-BERG/E1-ACL/H/FS bis 2000 ccm - Klasse

| Rg. | Nr. | | Sektor 1 | Sektor 2 | Sektor 3 | Sektor 4 | Speed Trap | Sektor 5 | Speed (Ziel) | Laufzeit | Speed (Lauf) |
|-----|-----|----------------------------|-------------------------------|-----------|-----------|-----------|-------------|-----------|--------------|-----------|--------------|
| 2 | 346 | WIEBE André | Renault Williams Wiebe Laguna | | | | | | | | |
| | | Lauf 1: | 00:04.154 | 00:01.879 | 00:20.442 | 00:11.599 | 140,76 km/h | 00:29.067 | 132,33 km/h | 01:07.141 | 108,85 km/h |
| | | Lauf 2: | 00:03.778 | 00:01.744 | 00:19.363 | 00:11.118 | 141,75 km/h | 00:28.587 | 132,04 km/h | 01:04.590 | 113,15 km/h |
| | | Lauf 3: | 00:04.109 | 00:01.802 | 00:19.255 | 00:10.928 | 150,79 km/h | 00:27.854 | 131,65 km/h | 01:03.948 | 114,28 km/h |
| | | Lauf 4: | * | * | * | * | * km/h | * | * km/h | * | * km/h |
| 3 | 311 | ORTH Patrick | BMW E30 320is | | | | | | | | |
| | | Lauf 1: | 00:03.513 | 00:01.740 | 00:19.529 | 00:11.251 | 141,71 km/h | 00:28.677 | 130,60 km/h | 01:04.710 | 112,93 km/h |
| | | Lauf 2: | 00:03.529 | 00:01.733 | 00:19.249 | 00:11.247 | 142,42 km/h | 00:28.690 | 128,44 km/h | 01:04.448 | 113,39 km/h |
| | | Lauf 3: | 00:03.676 | 00:01.758 | 00:19.257 | 00:11.283 | 142,93 km/h | 00:28.404 | 128,68 km/h | 01:04.378 | 113,52 km/h |
| | | Lauf 4: | * | * | * | * | * km/h | * | * km/h | * | * km/h |
| 4 | 332 | ELLER- Hans-Peter | Opel Kadett C Coupé | | | | | | | | |
| | | Lauf 1: | 00:03.688 | 00:01.883 | 00:20.490 | 00:11.318 | 134,99 km/h | 00:28.529 | 124,44 km/h | 01:05.908 | 110,88 km/h |
| | | Lauf 2: | 00:03.814 | 00:01.880 | 00:20.159 | 00:11.229 | 137,74 km/h | 00:28.454 | 125,03 km/h | 01:05.536 | 111,51 km/h |
| | | Lauf 3: | 00:03.842 | 00:01.879 | 00:19.959 | 00:11.130 | 139,82 km/h | 00:28.342 | 127,17 km/h | 01:05.152 | 112,17 km/h |
| | | Lauf 4: | * | * | * | * | * km/h | * | * km/h | * | * km/h |
| 5 | 319 | SCHÖNBORN Reiner | VW Golf I 16V | | | | | | | | |
| | | Lauf 1: | 00:03.752 | 00:01.815 | 00:20.140 | 00:11.470 | 146,81 km/h | 00:29.281 | 131,05 km/h | 01:06.458 | 109,96 km/h |
| | | Lauf 2: | 00:03.742 | 00:01.789 | 00:19.558 | 00:11.185 | 143,93 km/h | 00:29.106 | 130,84 km/h | 01:05.380 | 111,78 km/h |
| | | Lauf 3: | 00:03.874 | 00:01.812 | 00:19.399 | 00:11.229 | 144,46 km/h | 00:28.904 | 130,85 km/h | 01:05.218 | 112,05 km/h |
| | | Lauf 4: | * | * | * | * | * km/h | * | * km/h | * | * km/h |
| 6 | 312 | WIMMER Norbert | BMW 2002 8V | | | | | | | | |
| | | Lauf 1: | 00:03.642 | 00:01.835 | 00:19.926 | 00:11.483 | 140,09 km/h | 00:29.187 | 126,91 km/h | 01:06.073 | 110,60 km/h |
| | | Lauf 2: | 00:03.450 | 00:01.803 | 00:19.714 | 00:11.620 | 138,75 km/h | 00:28.970 | 124,90 km/h | 01:05.557 | 111,48 km/h |
| | | Lauf 3: | 00:03.419 | 00:01.789 | 00:19.635 | 00:11.691 | 139,10 km/h | 00:28.695 | 125,58 km/h | 01:05.229 | 112,04 km/h |
| | | Lauf 4: | 00:03.552 | 00:01.818 | 00:20.021 | 00:11.409 | 139,79 km/h | 00:28.663 | 123,11 km/h | 01:05.463 | 111,64 km/h |
| 7 | 300 | ROTTENBERGER Dieter | BMW 318i E36 STW | | | | | | | | |
| | | Lauf 1: | 00:03.956 | 00:01.721 | 00:19.659 | 00:11.265 | 142,02 km/h | 00:30.224 | 126,75 km/h | 01:06.825 | 109,36 km/h |
| | | Lauf 2: | 00:03.771 | 00:01.722 | 00:19.208 | 00:11.211 | 146,06 km/h | 00:29.978 | 122,67 km/h | 01:05.890 | 110,91 km/h |
| | | Lauf 3: | 00:04.018 | 00:01.763 | 00:19.325 | 00:11.051 | 145,86 km/h | 00:29.180 | 131,37 km/h | 01:05.337 | 111,85 km/h |
| | | Lauf 4: | * | * | * | * | * km/h | * | * km/h | * | * km/h |
| 8 | 345 | KOKOR Andreas | Ford Escort RS 2000 MK I | | | | | | | | |
| | | Lauf 1: | 00:03.483 | 00:01.737 | 00:20.206 | 00:11.912 | 122,58 km/h | 00:30.738 | 125,58 km/h | 01:08.076 | 107,35 km/h |
| | | Lauf 2: | 00:03.520 | 00:01.731 | 00:19.512 | 00:11.507 | 127,93 km/h | 00:29.506 | 122,84 km/h | 01:05.776 | 111,10 km/h |
| | | Lauf 3: | 00:03.475 | 00:01.735 | 00:19.840 | 00:11.413 | 133,92 km/h | 00:29.409 | 127,26 km/h | 01:05.872 | 110,94 km/h |
| | | Lauf 4: | * | * | * | * | * km/h | * | * km/h | * | * km/h |
| 9 | 327 | BRÜGGE Frank | VW Brügge Golf GTI 16V | | | | | | | | |
| | | Lauf 1: | 00:03.709 | 00:01.804 | 00:20.409 | 00:12.079 | 140,15 km/h | 00:30.615 | 126,75 km/h | 01:08.616 | 106,50 km/h |
| | | Lauf 2: | 00:03.704 | 00:01.782 | 00:19.944 | 00:11.409 | 141,20 km/h | 00:29.428 | 125,20 km/h | 01:06.267 | 110,28 km/h |
| | | Lauf 3: | 00:03.732 | 00:01.804 | 00:19.941 | 00:11.439 | 142,85 km/h | 00:29.217 | 125,97 km/h | 01:06.133 | 110,51 km/h |
| | | Lauf 4: | * | * | * | * | * km/h | * | * km/h | * | * km/h |
| 10 | 335 | RAUCH Michael | Opel Briegel Kadett C 8V | | | | | | | | |
| | | Lauf 1: | 00:03.526 | 00:01.774 | 00:21.093 | 00:12.301 | 121,57 km/h | 00:30.463 | 126,57 km/h | 01:09.157 | 105,67 km/h |
| | | Lauf 2: | 00:03.522 | 00:01.785 | 00:20.212 | 00:11.735 | 119,48 km/h | 00:30.161 | 125,74 km/h | 01:07.415 | 108,40 km/h |
| | | Lauf 3: | 00:03.517 | 00:01.773 | 00:20.143 | 00:11.463 | 132,40 km/h | 00:29.486 | 128,03 km/h | 01:06.382 | 110,09 km/h |
| | | Lauf 4: | 00:03.706 | 00:01.771 | 00:19.981 | 00:11.354 | 131,26 km/h | 00:29.396 | 128,23 km/h | 01:06.208 | 110,38 km/h |

Sektorzeiten & Speeds - Training - Gruppe E1-FIA/E1-BERG/E1-ACL/H/FS bis 2000 ccm - Klasse

| Rg. | Nr. | Sektor 1 | Sektor 2 | Sektor 3 | Sektor 4 | Speed Trap | Sektor 5 | Speed (Ziel) | Laufzeit | Speed (Lauf) | |
|-----|-----|-------------------------|-----------|---------------------------------|-----------|------------|-------------|--------------|-------------|--------------|-------------|
| 11 | 306 | DÜMLER Christian | | VW Golf II 8V | | | | | | | |
| | | Lauf 1: | 00:03.733 | 00:01.855 | 00:20.607 | 00:11.795 | 138,51 km/h | 00:29.249 | 123,57 km/h | 01:07.239 | 108,69 km/h |
| | | Lauf 2: | 00:03.797 | 00:01.870 | 00:20.119 | 00:11.594 | 136,40 km/h | 00:29.078 | 123,27 km/h | 01:06.458 | 109,96 km/h |
| | | Lauf 3: | 00:03.824 | 00:01.877 | 00:20.258 | 00:11.603 | 137,27 km/h | 00:28.986 | 123,49 km/h | 01:06.548 | 109,81 km/h |
| | | Lauf 4: | 00:03.815 | 00:01.870 | 00:20.170 | 00:11.547 | 139,70 km/h | 00:29.018 | 122,50 km/h | 01:06.420 | 110,03 km/h |
| 12 | 326 | WEBER Jens | | Opel Kadett C 16V | | | | | | | |
| | | Lauf 1: | 00:03.724 | 00:01.861 | 00:20.107 | 00:11.760 | 135,46 km/h | 00:29.839 | 124,44 km/h | 01:07.291 | 108,60 km/h |
| | | Lauf 2: | 00:03.602 | 00:01.835 | 00:20.207 | 00:11.605 | 136,95 km/h | 00:29.382 | 122,53 km/h | 01:06.631 | 109,68 km/h |
| | | Lauf 3: | 00:03.691 | 00:01.842 | 00:20.011 | 00:11.730 | 133,57 km/h | 00:29.385 | 121,87 km/h | 01:06.659 | 109,63 km/h |
| | | Lauf 4: | * | * | * | * | * km/h | * | * km/h | * | * km/h |
| 13 | 348 | FRANK René | | BMW 320i STW | | | | | | | |
| | | Lauf 1: | 00:03.877 | 00:01.790 | 00:21.862 | 00:12.833 | 118,78 km/h | 00:31.526 | 125,02 km/h | 01:11.888 | 101,66 km/h |
| | | Lauf 2: | 00:03.735 | 00:01.787 | 00:20.119 | 00:11.934 | 128,85 km/h | 00:30.388 | 126,05 km/h | 01:07.963 | 107,53 km/h |
| | | Lauf 3: | 00:03.661 | 00:01.767 | 00:19.771 | 00:11.734 | 127,33 km/h | 00:29.922 | 127,96 km/h | 01:06.855 | 109,31 km/h |
| | | Lauf 4: | * | * | * | * | * km/h | * | * km/h | * | * km/h |
| 14 | 338 | GLASS Stefan | | Ford Escort Lotus TC | | | | | | | |
| | | Lauf 1: | 00:03.617 | 00:01.856 | 00:20.451 | 00:11.974 | 130,12 km/h | 00:30.491 | 119,47 km/h | 01:08.389 | 106,86 km/h |
| | | Lauf 2: | 00:03.643 | 00:01.849 | 00:20.256 | 00:11.800 | 133,63 km/h | 00:29.669 | 122,17 km/h | 01:07.217 | 108,72 km/h |
| | | Lauf 3: | 00:03.692 | 00:01.848 | 00:20.100 | 00:11.899 | 125,04 km/h | 00:29.813 | 120,44 km/h | 01:07.352 | 108,50 km/h |
| | | Lauf 4: | 00:03.622 | 00:01.847 | 00:20.860 | 00:11.751 | 132,90 km/h | 00:29.431 | 122,46 km/h | 01:07.511 | 108,25 km/h |
| 15 | 305 | SCHUSTER Jürgen | | Mazda RX-7 | | | | | | | |
| | | Lauf 1: | 00:03.730 | 00:02.036 | 00:21.439 | 00:12.179 | 132,86 km/h | 00:30.287 | 120,53 km/h | 01:09.671 | 104,89 km/h |
| | | Lauf 2: | 00:03.717 | 00:01.984 | 00:20.759 | 00:11.879 | 134,77 km/h | 00:29.937 | 119,74 km/h | 01:08.276 | 107,04 km/h |
| | | Lauf 3: | 00:03.956 | 00:01.986 | 00:20.953 | 00:11.734 | 132,99 km/h | 00:29.957 | 115,04 km/h | 01:08.586 | 106,55 km/h |
| | | Lauf 4: | 00:03.948 | 00:01.973 | 00:20.727 | 00:11.744 | 134,17 km/h | 00:29.322 | 123,47 km/h | 01:07.714 | 107,92 km/h |
| 16 | 333 | HATEZIC Johann | | Opel Frank Ascona B 8V | | | | | | | |
| | | Lauf 1: | 00:03.859 | 00:01.928 | 00:20.821 | 00:12.204 | 128,57 km/h | 00:30.387 | 119,82 km/h | 01:09.199 | 105,61 km/h |
| | | Lauf 2: | 00:03.597 | 00:01.865 | 00:20.662 | 00:11.971 | 136,25 km/h | 00:29.624 | 116,92 km/h | 01:07.719 | 107,92 km/h |
| | | Lauf 3: | 00:03.783 | 00:01.918 | 00:20.465 | 00:11.693 | 137,75 km/h | 00:29.989 | 119,96 km/h | 01:07.848 | 107,71 km/h |
| | | Lauf 4: | * | * | * | * | * km/h | * | * km/h | * | * km/h |
| 17 | 308 | FLIK Beatrice | | Renault Megane Cup | | | | | | | |
| | | Lauf 1: | 00:03.839 | 00:01.856 | 00:20.923 | 00:12.432 | 129,79 km/h | 00:30.300 | 122,17 km/h | 01:09.350 | 105,38 km/h |
| | | Lauf 2: | 00:03.740 | 00:01.846 | 00:20.869 | 00:12.466 | 124,11 km/h | 00:30.278 | 124,47 km/h | 01:09.199 | 105,61 km/h |
| | | Lauf 3: | 00:03.724 | 00:01.855 | 00:20.673 | 00:12.161 | 128,44 km/h | 00:30.114 | 124,89 km/h | 01:08.527 | 106,64 km/h |
| | | Lauf 4: | 00:03.777 | 00:01.837 | 00:20.516 | 00:11.955 | 135,55 km/h | 00:29.683 | 124,44 km/h | 01:07.768 | 107,84 km/h |
| 18 | 309 | WEISS Werner | | Ford Zakspeed Escort RS 1800 | | | | | | | |
| | | Lauf 1: | 00:03.511 | 00:01.805 | 00:21.165 | 00:12.093 | 134,42 km/h | 00:31.310 | 115,65 km/h | 01:09.884 | 104,57 km/h |
| | | Lauf 2: | 00:03.577 | 00:01.815 | 00:20.341 | 00:11.919 | 136,67 km/h | 00:30.456 | 117,83 km/h | 01:08.108 | 107,30 km/h |
| | | Lauf 3: | 00:03.564 | 00:01.803 | 00:20.883 | 00:12.182 | 136,33 km/h | 00:31.090 | 122,26 km/h | 01:09.522 | 105,12 km/h |
| | | Lauf 4: | * | * | * | * | * km/h | * | * km/h | * | * km/h |
| 19 | 334 | LANG Bernhard | | Ford Escort RS2000 Spezial Frai | | | | | | | |
| | | Lauf 1: | 00:03.608 | 00:01.836 | 00:20.690 | 00:11.959 | 128,38 km/h | 00:31.030 | 119,13 km/h | 01:09.123 | 105,72 km/h |
| | | Lauf 2: | 00:03.688 | 00:01.882 | 00:20.954 | 00:12.253 | 128,08 km/h | 00:31.863 | 116,46 km/h | 01:10.640 | 103,45 km/h |
| | | Lauf 3: | 00:03.778 | 00:01.872 | 00:21.486 | 00:12.114 | 133,06 km/h | 00:31.312 | 118,38 km/h | 01:10.562 | 103,57 km/h |
| | | Lauf 4: | * | * | * | * | * km/h | * | * km/h | * | * km/h |

Sektorzeiten & Speeds - Training - Gruppe E1-FIA/E1-BERG/E1-ACL/H/FS bis 2000 ccm - Klasse

| Rg. | Nr. | | Sektor 1 | Sektor 2 | Sektor 3 | Sektor 4 | Speed Trap | Sektor 5 | Speed (Ziel) | Laufzeit | Speed (Lauf) |
|-----|-----|----------------------------|--------------------------|-----------|-----------|-----------|-------------|-----------|--------------|-----------|--------------|
| 20 | 307 | LADAGE Uwe | BMW 320 WTTC | | | | | | | | |
| | | Lauf 1: | 00:04.021 | 00:01.876 | 00:21.669 | 00:12.765 | 131,23 km/h | 00:33.187 | 117,31 km/h | 01:13.518 | 99,40 km/h |
| | | Lauf 2: | 00:03.481 | 00:01.789 | 00:21.260 | 00:12.859 | 133,07 km/h | 00:33.206 | 116,40 km/h | 01:12.595 | 100,67 km/h |
| | | Lauf 3: | 00:03.482 | 00:01.794 | 00:20.831 | 00:12.838 | 129,34 km/h | 00:32.489 | 119,36 km/h | 01:11.434 | 102,30 km/h |
| | | Lauf 4: | * | * | * | * | * km/h | * | * km/h | * | * km/h |
| 21 | 343 | RATH Fabien Marcel | Opel Kadett C GT/E | | | | | | | | |
| | | Lauf 1: | 00:04.027 | 00:02.149 | 00:22.456 | 00:12.830 | 124,87 km/h | 00:33.152 | 109,13 km/h | 01:14.614 | 97,94 km/h |
| | | Lauf 2: | 00:04.068 | 00:02.166 | 00:22.644 | 00:12.662 | 120,67 km/h | 00:33.391 | 108,78 km/h | 01:14.931 | 97,53 km/h |
| | | Lauf 3: | 00:03.992 | 00:02.155 | 00:21.882 | 00:12.338 | 124,41 km/h | 00:32.126 | 114,62 km/h | 01:12.493 | 100,81 km/h |
| | | Lauf 4: | * | * | * | * | * km/h | * | * km/h | * | * km/h |
| 22 | 328 | ALT Holger | Ford Escort RS2000 16V | | | | | | | | |
| | | Lauf 1: | 00:03.954 | 00:02.085 | 00:22.894 | 00:13.718 | 120,19 km/h | 00:35.355 | 109,21 km/h | 01:18.006 | 93,68 km/h |
| | | Lauf 2: | 00:03.914 | 00:02.065 | 00:23.211 | 00:13.534 | 118,84 km/h | 00:34.386 | 111,34 km/h | 01:17.110 | 94,77 km/h |
| | | Lauf 3: | 00:03.967 | 00:02.061 | 00:22.267 | 00:13.295 | 119,76 km/h | 00:33.219 | 112,20 km/h | 01:14.809 | 97,69 km/h |
| | | Lauf 4: | * | * | * | * | * km/h | * | * km/h | * | * km/h |
| 23 | 347 | DE WEST Wilko | Opel Kadett C Coupé | | | | | | | | |
| | | Lauf 1: | 00:03.923 | 00:02.059 | 00:22.461 | 00:13.437 | 121,29 km/h | 00:34.871 | 99,76 km/h | 01:16.751 | 95,22 km/h |
| | | Lauf 2: | 00:03.876 | 00:02.103 | 00:23.523 | 00:13.267 | 115,67 km/h | 00:33.456 | 115,81 km/h | 01:16.225 | 95,87 km/h |
| | | Lauf 3: | 00:04.028 | 00:02.045 | 00:22.805 | 00:13.331 | 122,17 km/h | 00:33.392 | 114,88 km/h | 01:15.601 | 96,67 km/h |
| | | Lauf 4: | * | * | * | * | * km/h | * | * km/h | * | * km/h |
| 24 | 331 | SCHUG Martin | VW Golf II 16V | | | | | | | | |
| | | Lauf 1: | 00:03.998 | 00:01.991 | 00:23.592 | 00:13.858 | 117,11 km/h | 00:36.731 | 103,82 km/h | 01:20.170 | 91,16 km/h |
| | | Lauf 2: | 00:03.845 | 00:01.965 | 00:22.612 | 00:13.482 | 120,91 km/h | 00:34.579 | 107,66 km/h | 01:16.483 | 95,55 km/h |
| | | Lauf 3: | 00:03.831 | 00:01.970 | 00:22.904 | 00:13.513 | 117,78 km/h | 00:34.615 | 104,62 km/h | 01:16.833 | 95,12 km/h |
| | | Lauf 4: | 00:03.852 | 00:01.967 | 00:22.614 | 00:13.162 | 117,55 km/h | 00:34.342 | 106,36 km/h | 01:15.937 | 96,24 km/h |
| 25 | 324 | SCHWANECKE Gero | VW Golf I GTI Escher 16V | | | | | | | | |
| | | Lauf 1: | 00:04.078 | 00:02.257 | 00:24.309 | 00:13.703 | 118,33 km/h | 00:34.542 | 106,97 km/h | 01:18.889 | 92,64 km/h |
| | | Lauf 2: | 00:03.867 | 00:02.140 | 00:22.895 | 00:13.699 | 120,11 km/h | 00:33.774 | 112,72 km/h | 01:16.375 | 95,69 km/h |
| | | Lauf 3: | 00:04.156 | 00:02.969 | 00:24.537 | 00:13.631 | 118,33 km/h | 00:34.302 | 109,44 km/h | 01:19.595 | 91,81 km/h |
| | | Lauf 4: | * | * | * | * | * km/h | * | * km/h | * | * km/h |
| 26 | 349 | WECKENBROCK Heiko | BMW 318 ti Compact | | | | | | | | |
| | | Lauf 1: | 00:04.409 | 00:02.445 | 00:25.591 | 00:14.747 | 106,13 km/h | 00:35.690 | 100,56 km/h | 01:22.882 | 88,17 km/h |
| | | Lauf 2: | 00:04.239 | 00:02.399 | 00:24.828 | 00:13.969 | 110,21 km/h | 00:34.344 | 100,47 km/h | 01:19.779 | 91,60 km/h |
| | | Lauf 3: | 00:04.534 | 00:02.566 | 00:25.124 | 00:14.239 | 108,17 km/h | 00:34.396 | 102,58 km/h | 01:20.859 | 90,38 km/h |
| | | Lauf 4: | 00:04.487 | 00:02.521 | 00:25.067 | 00:14.242 | 107,21 km/h | 00:37.237 | 99,33 km/h | 01:23.554 | 87,46 km/h |
| 27 | 350 | MODERSITZKI Andreas | Ford RS 2000 | | | | | | | | |
| | | Lauf 1: | 00:04.403 | 00:02.347 | 00:25.141 | 00:14.567 | 113,59 km/h | 00:35.645 | 103,36 km/h | 01:22.103 | 89,01 km/h |
| | | Lauf 2: | 00:04.139 | 00:02.344 | 00:24.838 | 00:14.626 | 112,44 km/h | 00:35.234 | 101,12 km/h | 01:21.181 | 90,02 km/h |
| | | Lauf 3: | 00:04.207 | 00:02.244 | 00:24.428 | 00:13.955 | 117,09 km/h | 00:35.413 | 103,67 km/h | 01:20.247 | 91,07 km/h |
| | | Lauf 4: | * | * | * | * | * km/h | * | * km/h | * | * km/h |
| 28 | 329 | HIRTE Michael | Renault Clio RS Cup | | | | | | | | |
| | | Lauf 1: | 00:03.902 | 00:02.096 | 00:25.002 | 00:15.615 | 98,63 km/h | 00:39.484 | 105,59 km/h | 01:26.099 | 84,88 km/h |
| | | Lauf 2: | 00:03.696 | 00:01.974 | 00:23.799 | 00:14.922 | 115,00 km/h | 00:36.892 | 108,65 km/h | 01:21.283 | 89,91 km/h |
| | | Lauf 3: | 00:04.135 | 00:02.047 | 00:24.457 | 00:15.297 | 106,91 km/h | 00:38.338 | 105,14 km/h | 01:24.274 | 86,72 km/h |
| | | Lauf 4: | * | * | * | * | * km/h | * | * km/h | * | * km/h |