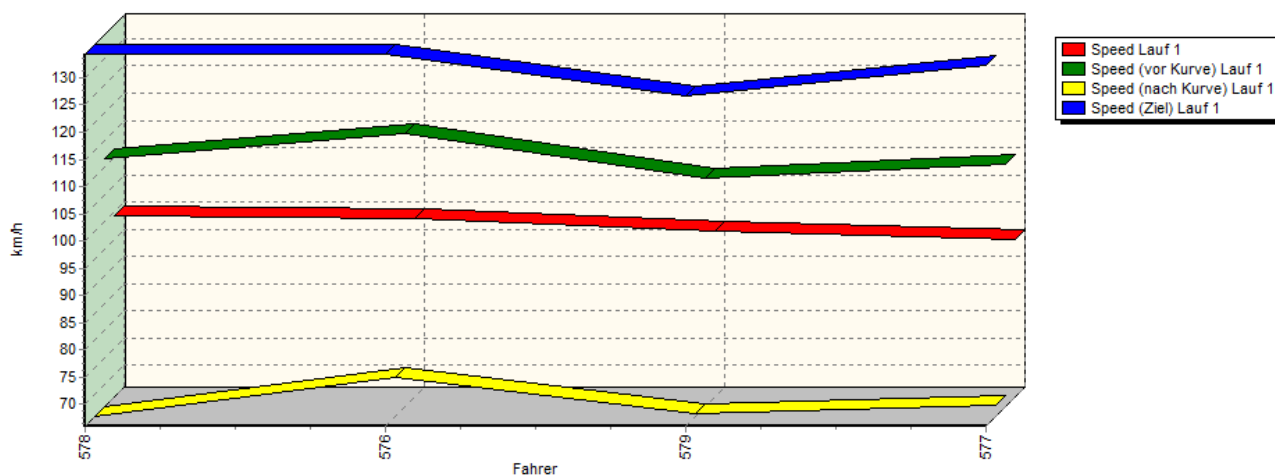
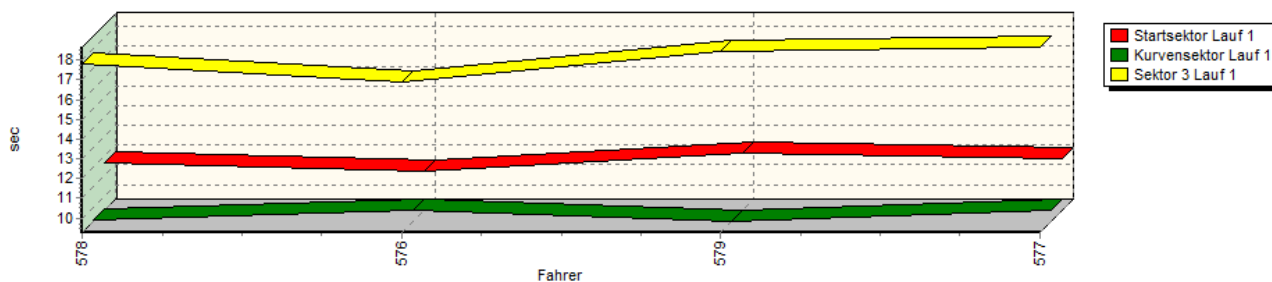


Sektorzeiten & Speeds - Gruppe A,R2,R3,F,CTC/CGT

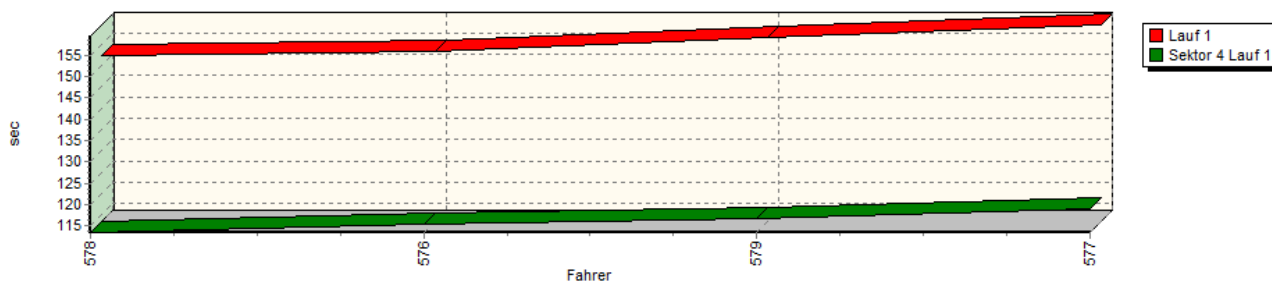
Speed-Diagramm Lauf 1



Sektor-Diagramm (Start) Lauf 1

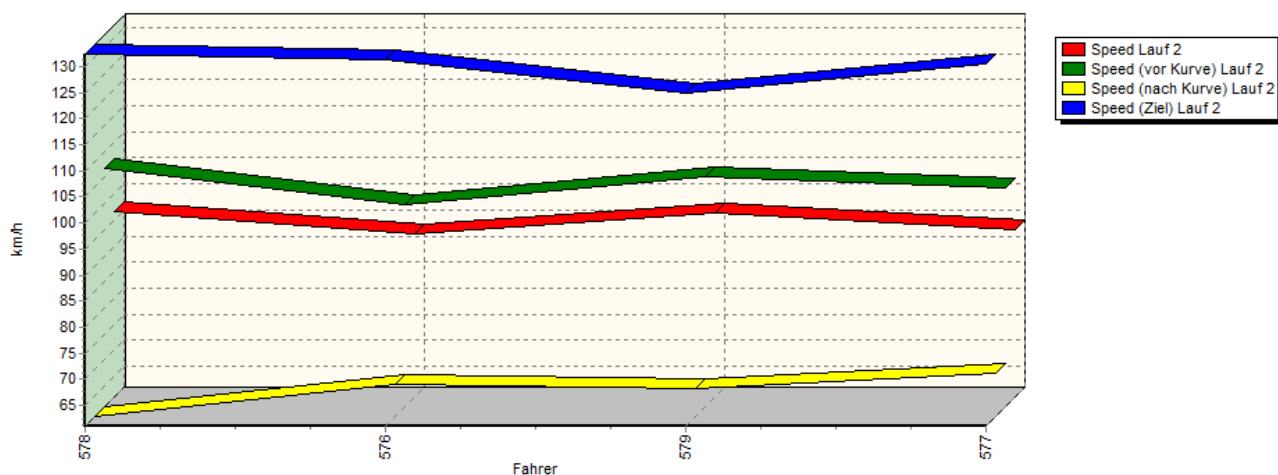


Sektor-Diagramm (Rest) Lauf 1

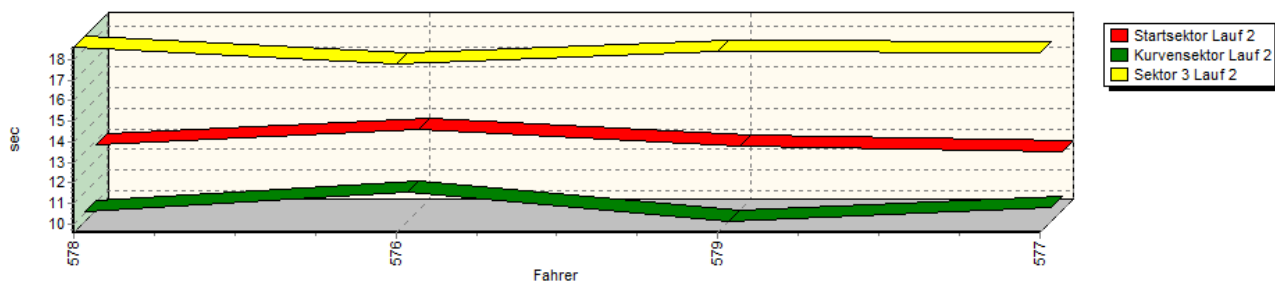


Sektorzeiten & Speeds - Gruppe A,R2,R3,F,CTC/CGT

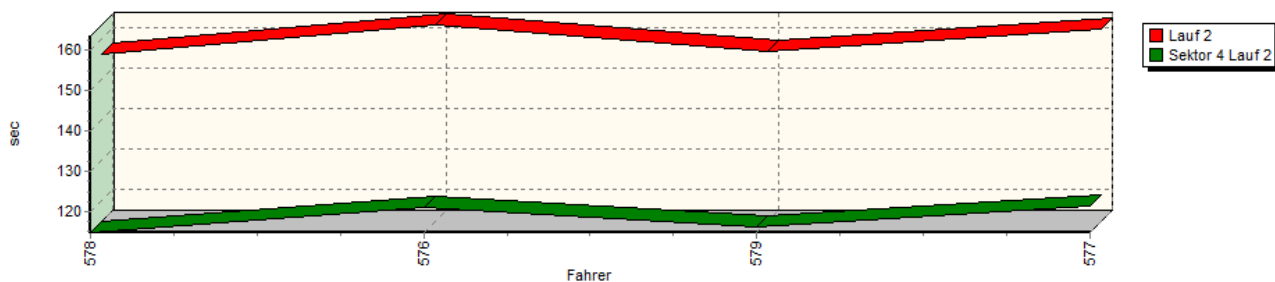
Speed-Diagramm Lauf 2



Sektor-Diagramm (Start) Lauf 2

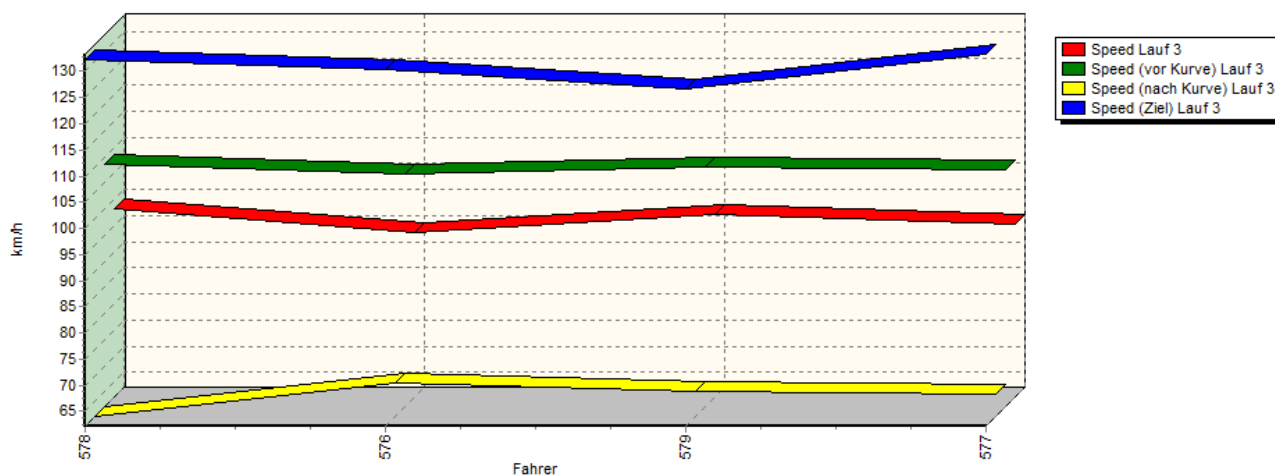


Sektor-Diagramm (Rest) Lauf 2

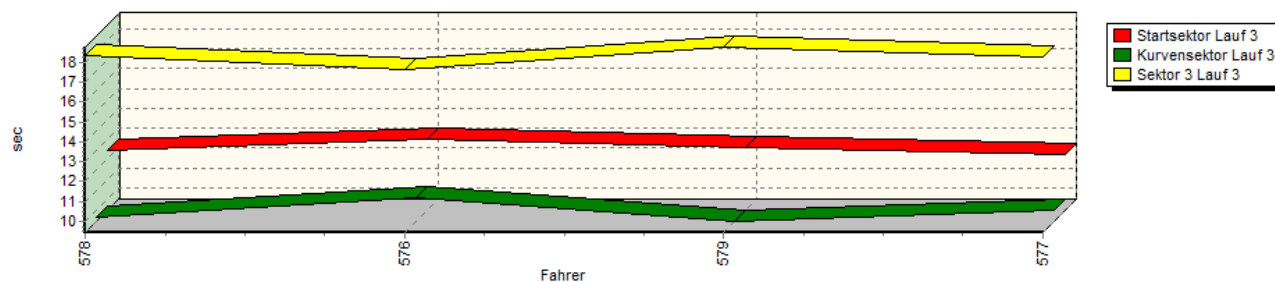


Sektorzeiten & Speeds - Gruppe A,R2,R3,F,CTC/CGT

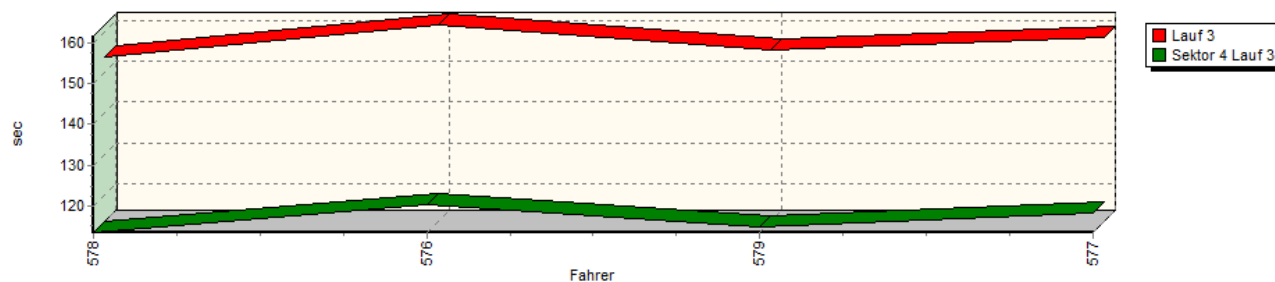
Speed-Diagramm Lauf 3



Sektor-Diagramm (Start) Lauf 3



Sektor-Diagramm (Rest) Lauf 3

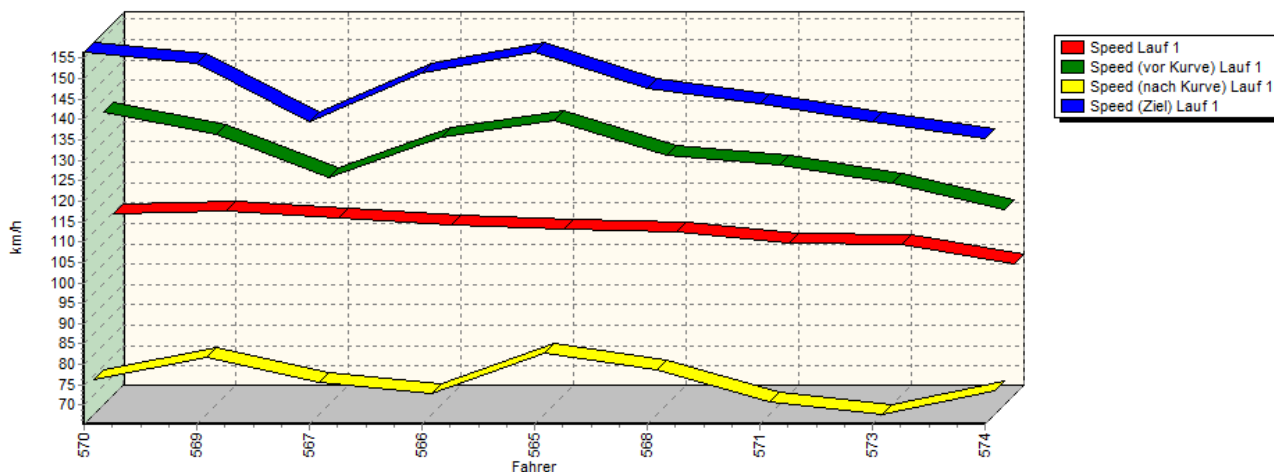


| Rg. | Nr. | Startsek. | Speed vor Kurve | 90°-Kurve | Speed n. K. | Sektor 3 | Sektor 4 | Speed Ziel | Laufzeit | Speed (Lauf) |
|-----|---------|--|-----------------|-----------|-------------|----------|-----------|-------------|-----------|--------------|
| 1 | 578 | GREBE Hartmut Ford Fiesta 1,4 FUN | | | | | | | | |
| | Lauf 1: | 11.688 | 111,52 km/h | 09.340 | 65,99 km/h | 17.823 | 01:53.440 | 134,33 km/h | 02:32.291 | 99,28 km/h |
| | Lauf 2: | 12.792 | 106,75 km/h | 10.044 | 61,04 km/h | 18.620 | 01:54.979 | 132,35 km/h | 02:36.435 | 96,65 km/h |
| | Lauf 3: | 12.470 | 108,48 km/h | 09.633 | 62,16 km/h | 18.307 | 01:53.509 | 132,35 km/h | 02:33.919 | 98,23 km/h |

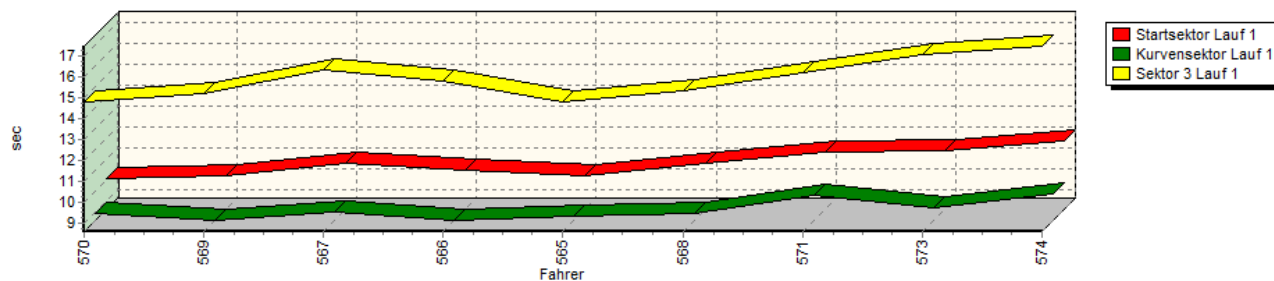
Sektorzeiten & Speeds - Gruppe A,R2,R3,F,CTC/CGT

| Rg. | Nr. | Startsek. | Speed vor Kurve | 90°-Kurve | Speed n. K. | Sektor 3 | Sektor 4 | Speed Ziel | Laufzeit | Speed (Lauf) |
|-----|---------|---|-----------------|-----------|-------------|----------|-----------|-------------|-----------|--------------|
| 2 | 576 | FRÖHLICH Tim Renault Alpine A110 | | | | | | | | |
| | Lauf 1: | 11.268 | 116,10 km/h | 09.824 | 73,27 km/h | 16.865 | 01:55.267 | 134,33 km/h | 02:33.224 | 98,68 km/h |
| | Lauf 2: | 13.527 | 99,84 km/h | 10.983 | 67,16 km/h | 17.812 | 02:01.279 | 131,39 km/h | 02:43.601 | 92,42 km/h |
| | Lauf 3: | 13.021 | 106,65 km/h | 10.612 | 68,57 km/h | 17.642 | 02:00.396 | 130,43 km/h | 02:41.671 | 93,52 km/h |
| 3 | 579 | MASLONKA Robert VW Polo | | | | | | | | |
| | Lauf 1: | 12.121 | 107,97 km/h | 09.264 | 66,55 km/h | 18.409 | 01:56.836 | 126,76 km/h | 02:36.630 | 96,53 km/h |
| | Lauf 2: | 12.709 | 105,02 km/h | 09.562 | 66,38 km/h | 18.404 | 01:56.260 | 125,00 km/h | 02:36.935 | 96,35 km/h |
| | Lauf 3: | 12.565 | 108,04 km/h | 09.437 | 66,92 km/h | 18.744 | 01:54.827 | 126,76 km/h | 02:35.573 | 97,19 km/h |
| 4 | 577 | BOCH Heinz-Peter Honda Civic | | | | | | | | |
| | Lauf 1: | 11.840 | 110,49 km/h | 09.852 | 68,12 km/h | 18.646 | 01:59.145 | 132,35 km/h | 02:39.483 | 94,81 km/h |
| | Lauf 2: | 12.402 | 103,10 km/h | 10.266 | 69,32 km/h | 18.327 | 02:01.633 | 130,43 km/h | 02:42.628 | 92,97 km/h |
| | Lauf 3: | 12.233 | 107,48 km/h | 09.971 | 66,36 km/h | 18.231 | 01:58.209 | 133,33 km/h | 02:38.644 | 95,31 km/h |

Speed-Diagramm Lauf 1

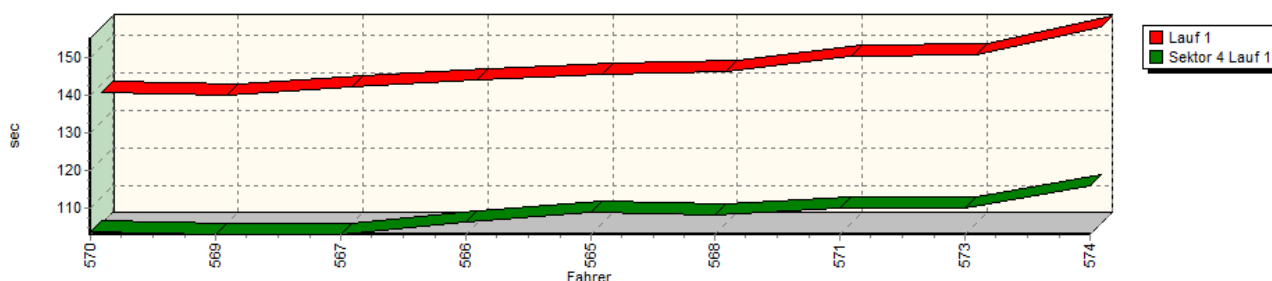


Sektor-Diagramm (Start) Lauf 1

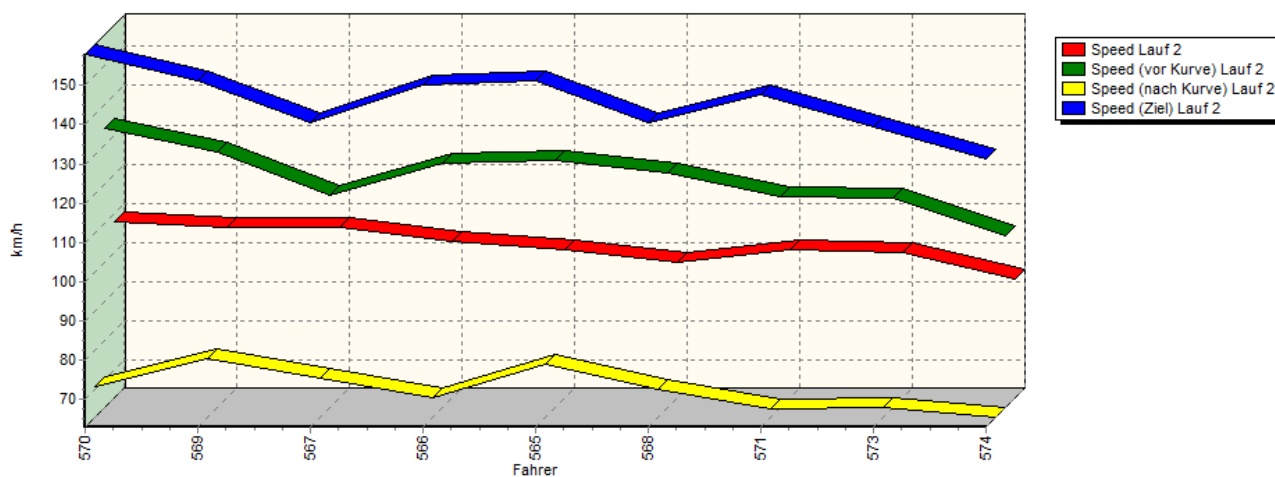


Sektorzeiten & Speeds - Gruppe A,R2,R3,F,CTC/CGT

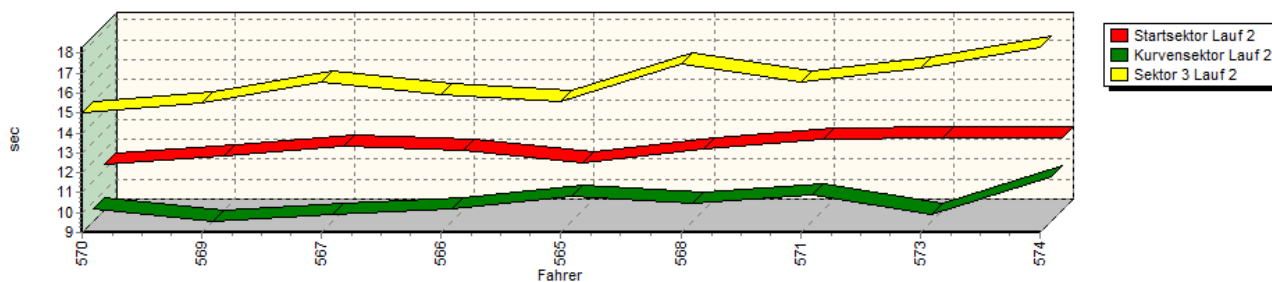
Sektor-Diagramm (Rest) Lauf 1



Speed-Diagramm Lauf 2

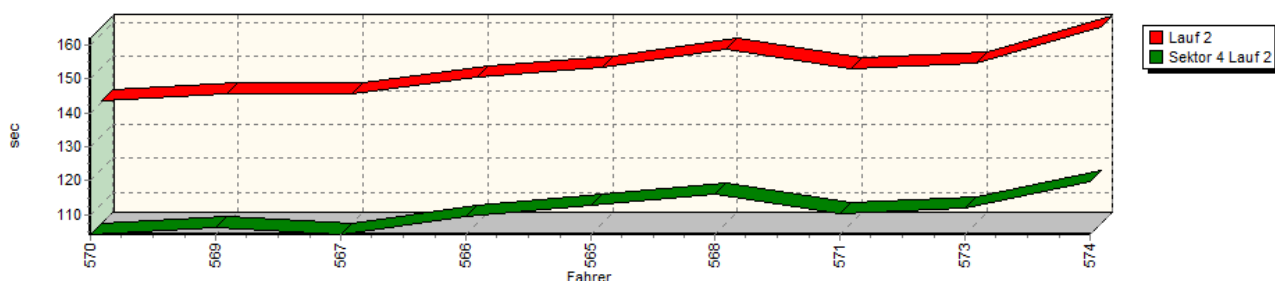


Sektor-Diagramm (Start) Lauf 2

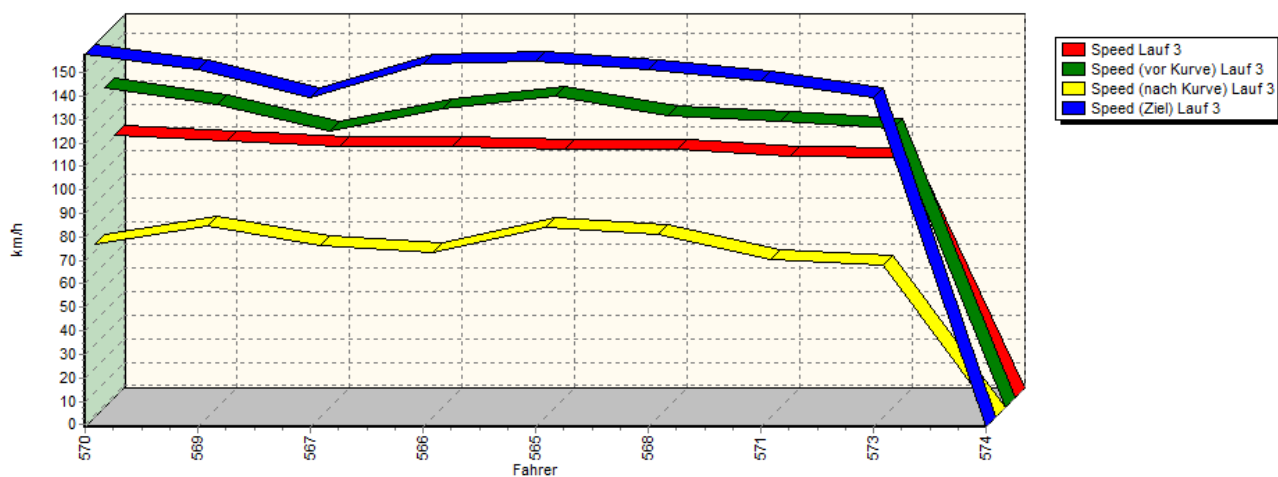


Sektorzeiten & Speeds - Gruppe A,R2,R3,F,CTC/CGT

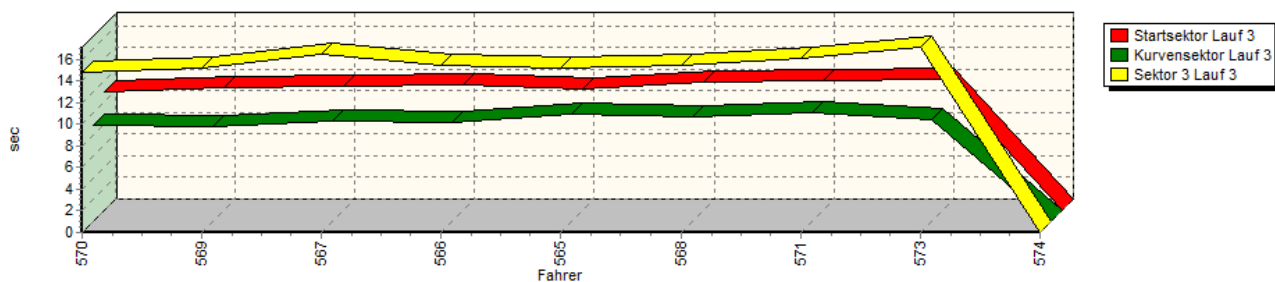
Sektor-Diagramm (Rest) Lauf 2



Speed-Diagramm Lauf 3

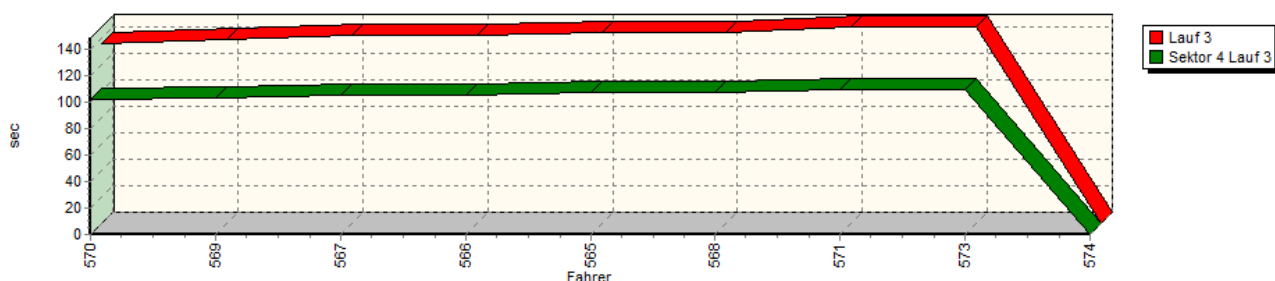


Sektor-Diagramm (Start) Lauf 3



Sektorzeiten & Speeds - Gruppe A,R2,R3,F,CTC/CGT

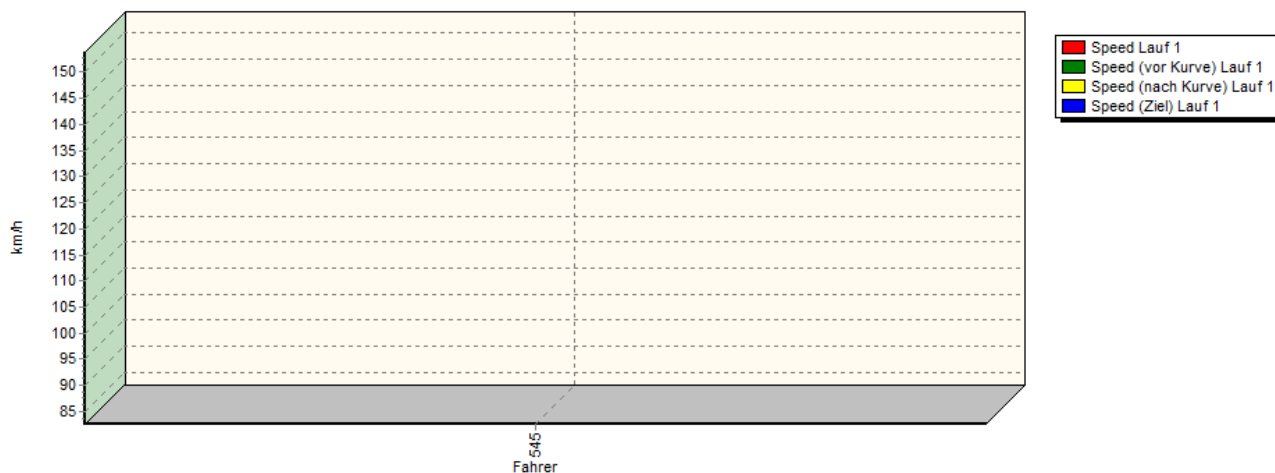
Sektor-Diagramm (Rest) Lauf 3



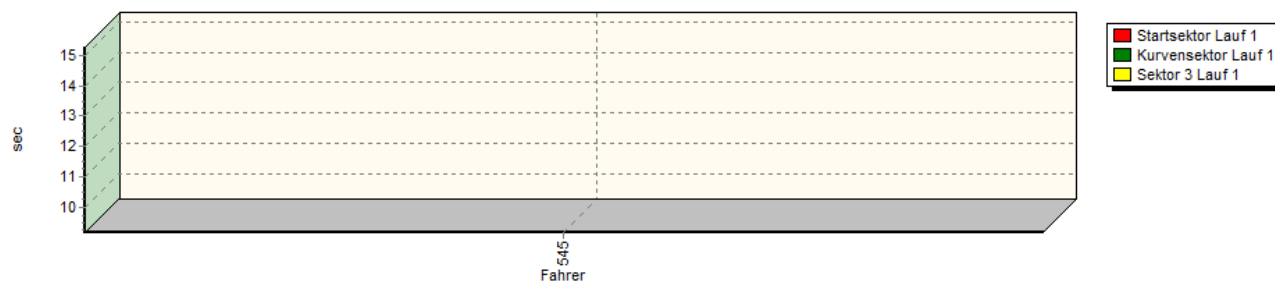
| Rg. | Nr. | Startsek. | Speed vor Kurve | 90°-Kurve | Speed n. K. | Sektor 3 | Sektor 4 | Speed Ziel | Laufzeit | Speed (Lauf) |
|-----|---------|---------------------------|-----------------|-------------------|-------------|----------|-----------|-------------|-----------|--------------|
| 1 | 570 | NEU Kai | | Ford Focus ST170 | | | | | | |
| | Lauf 1: | 10.095 | 137,18 km/h | 08.965 | 73,95 km/h | 14.836 | 01:43.946 | 156,52 km/h | 02:17.842 | 109,69 km/h |
| | Lauf 2: | 11.309 | 134,05 km/h | 09.632 | 70,75 km/h | 15.029 | 01:44.114 | 157,89 km/h | 02:20.084 | 107,93 km/h |
| | Lauf 3: | 10.920 | 135,10 km/h | 08.920 | 72,71 km/h | 14.806 | 01:41.948 | 157,89 km/h | 02:16.594 | 110,69 km/h |
| 2 | 569 | ORTH Patrick | | VW Golf GTI | | | | | | |
| | Lauf 1: | 10.201 | 131,52 km/h | 08.637 | 79,49 km/h | 15.192 | 01:43.093 | 153,85 km/h | 02:17.123 | 110,27 km/h |
| | Lauf 2: | 11.732 | 128,16 km/h | 08.996 | 77,92 km/h | 15.498 | 01:46.064 | 151,26 km/h | 02:22.290 | 106,26 km/h |
| | Lauf 3: | 11.368 | 128,02 km/h | 08.770 | 80,37 km/h | 15.216 | 01:43.830 | 151,26 km/h | 02:19.184 | 108,63 km/h |
| 3 | 567 | REDER Alexander | | BMW 318i E36 | | | | | | |
| | Lauf 1: | 10.796 | 120,99 km/h | 09.024 | 73,09 km/h | 16.339 | 01:43.087 | 139,53 km/h | 02:19.246 | 108,58 km/h |
| | Lauf 2: | 12.190 | 117,05 km/h | 09.370 | 73,15 km/h | 16.548 | 01:44.077 | 140,62 km/h | 02:22.185 | 106,34 km/h |
| | Lauf 3: | 11.428 | 116,92 km/h | 09.237 | 72,24 km/h | 16.528 | 01:45.157 | 139,53 km/h | 02:22.350 | 106,22 km/h |
| 4 | 566 | ORTH Ralf | | BMW E30 | | | | | | |
| | Lauf 1: | 10.507 | 130,87 km/h | 08.633 | 70,47 km/h | 15.805 | 01:46.386 | 151,26 km/h | 02:21.331 | 106,98 km/h |
| | Lauf 2: | 12.003 | 125,27 km/h | 09.627 | 68,04 km/h | 15.955 | 01:49.523 | 150,00 km/h | 02:27.108 | 102,78 km/h |
| | Lauf 3: | 11.645 | 126,36 km/h | 09.120 | 69,04 km/h | 15.500 | 01:45.840 | 153,85 km/h | 02:22.105 | 106,40 km/h |
| 5 | 565 | VEIT Kevin | | BMW E30 | | | | | | |
| | Lauf 1: | 10.219 | 135,06 km/h | 08.823 | 80,38 km/h | 14.812 | 01:48.902 | 156,52 km/h | 02:22.756 | 105,92 km/h |
| | Lauf 2: | 11.391 | 125,78 km/h | 10.286 | 76,55 km/h | 15.562 | 01:52.711 | 151,26 km/h | 02:29.950 | 100,83 km/h |
| | Lauf 3: | 11.208 | 131,56 km/h | 09.965 | 79,67 km/h | 15.178 | 01:47.891 | 155,17 km/h | 02:24.242 | 104,82 km/h |
| 6 | 568 | WOLK Alexander | | VW Golf III 16V | | | | | | |
| | Lauf 1: | 10.818 | 126,50 km/h | 08.942 | 76,22 km/h | 15.324 | 01:48.321 | 147,54 km/h | 02:23.405 | 105,44 km/h |
| | Lauf 2: | 12.099 | 122,71 km/h | 09.901 | 70,27 km/h | 17.482 | 01:55.860 | 140,62 km/h | 02:35.342 | 97,33 km/h |
| | Lauf 3: | 11.849 | 123,42 km/h | 09.663 | 76,74 km/h | 15.423 | 01:47.218 | 151,26 km/h | 02:24.153 | 104,89 km/h |
| 7 | 571 | BODNER Christian | | BMW 320 | | | | | | |
| | Lauf 1: | 11.324 | 124,14 km/h | 09.804 | 68,41 km/h | 16.187 | 01:50.245 | 144,00 km/h | 02:27.560 | 102,47 km/h |
| | Lauf 2: | 12.562 | 116,86 km/h | 10.324 | 65,01 km/h | 16.576 | 01:50.447 | 147,54 km/h | 02:29.909 | 100,86 km/h |
| | Lauf 3: | 11.984 | 121,11 km/h | 10.104 | 66,31 km/h | 16.183 | 01:50.311 | 146,34 km/h | 02:28.582 | 101,76 km/h |
| 8 | 573 | ZUFALL Erik | | Opel Astra F CC | | | | | | |
| | Lauf 1: | 11.393 | 119,77 km/h | 09.233 | 65,34 km/h | 17.050 | 01:50.290 | 139,53 km/h | 02:27.966 | 102,19 km/h |
| | Lauf 2: | 12.653 | 116,50 km/h | 09.374 | 65,63 km/h | 17.244 | 01:52.040 | 139,53 km/h | 02:31.311 | 99,93 km/h |
| | Lauf 3: | 12.132 | 118,01 km/h | 09.407 | 63,63 km/h | 17.161 | 01:50.177 | 139,53 km/h | 02:28.877 | 101,56 km/h |
| 9 | 574 | GÜRTZGEN Friedhelm | | BMW Compact 318Ti | | | | | | |
| | Lauf 1: | 11.902 | 113,14 km/h | 09.923 | 71,15 km/h | 17.468 | 01:55.949 | 135,34 km/h | 02:35.242 | 97,40 km/h |
| | Lauf 2: | 12.644 | 106,67 km/h | 11.217 | 63,05 km/h | 18.308 | 01:59.892 | 131,39 km/h | 02:42.061 | 93,30 km/h |
| | Lauf 3: | 00.000 | * km/h | 00.000 | * km/h | 00.000 | * | * km/h | * | * km/h |

Sektorzeiten & Speeds - Gruppe A,R2,R3,F,CTC/CGT

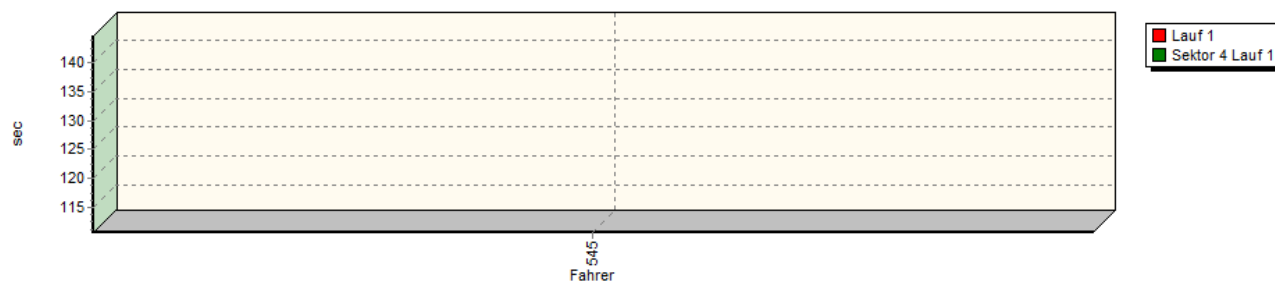
Speed-Diagramm Lauf 1



Sektor-Diagramm (Start) Lauf 1

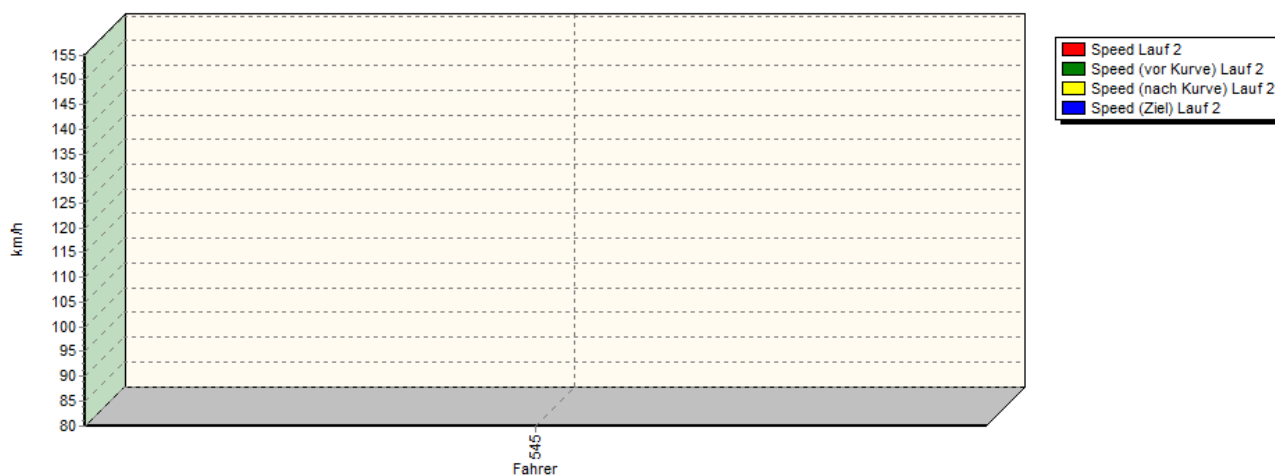


Sektor-Diagramm (Rest) Lauf 1

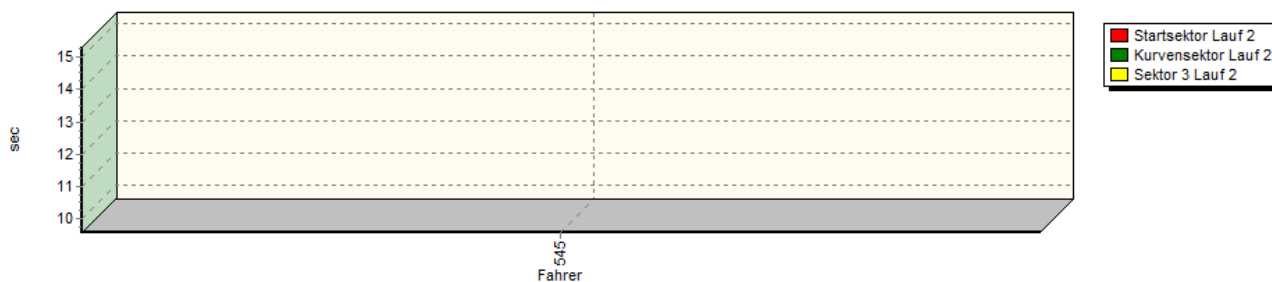


Sektorzeiten & Speeds - Gruppe A,R2,R3,F,CTC/CGT

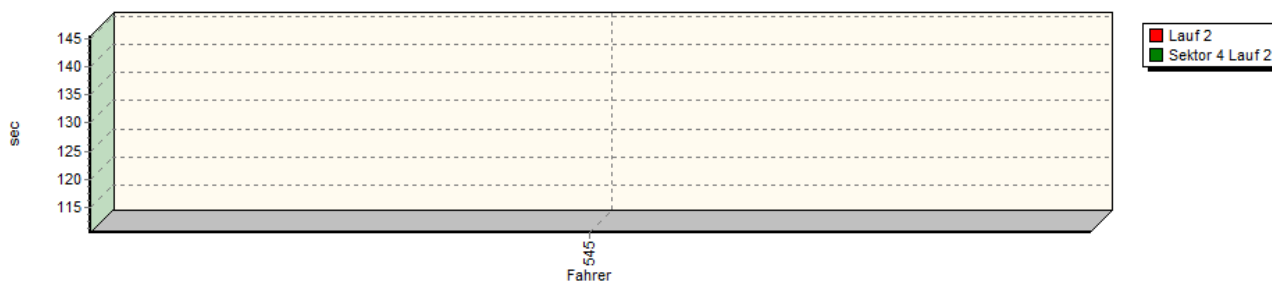
Speed-Diagramm Lauf 2



Sektor-Diagramm (Start) Lauf 2

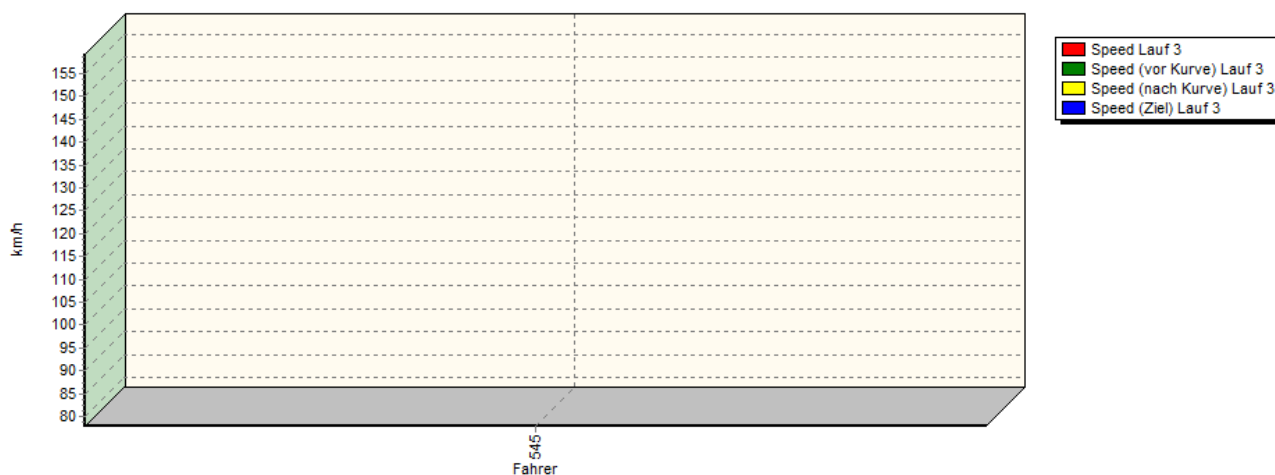


Sektor-Diagramm (Rest) Lauf 2

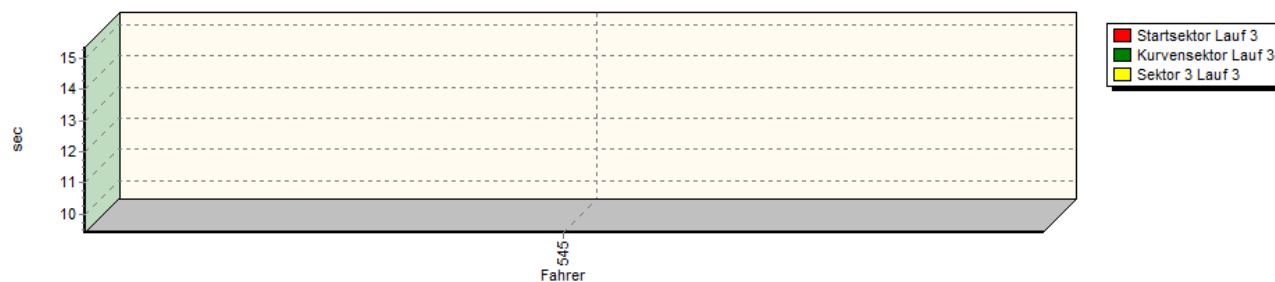


Sektorzeiten & Speeds - Gruppe A,R2,R3,F,CTC/CGT

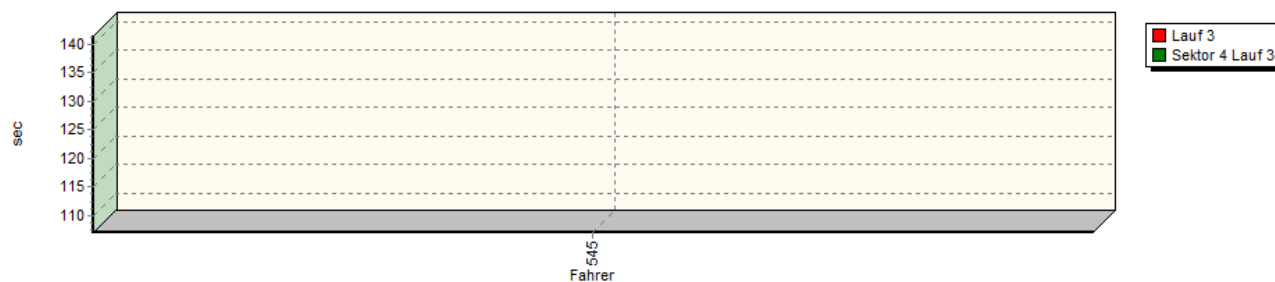
Speed-Diagramm Lauf 3



Sektor-Diagramm (Start) Lauf 3



Sektor-Diagramm (Rest) Lauf 3



| Rg. | Nr. | Startsek. | Speed vor Kurve | 90°-Kurve | Speed n. K. | Sektor 3 | Sektor 4 | Speed Ziel | Laufzeit | Speed (Lauf) | |
|-----|-----|--------------------|-----------------|----------------|-------------|------------|----------|------------|-------------|--------------|-------------|
| 1 | 545 | VOGT Albert | | Subaru Impreza | | | | | | | |
| | | Lauf 1: | 09.511 | 138,54 km/h | 09.172 | 82,58 km/h | 15.261 | 01:50.660 | 153,85 km/h | 02:24.604 | 104,56 km/h |
| | | Lauf 2: | 10.132 | 135,63 km/h | 09.564 | 79,86 km/h | 15.314 | 01:50.497 | 155,17 km/h | 02:25.507 | 103,91 km/h |
| | | Lauf 3: | 09.663 | 136,65 km/h | 09.410 | 77,89 km/h | 15.357 | 01:46.964 | 159,29 km/h | 02:21.394 | 106,94 km/h |