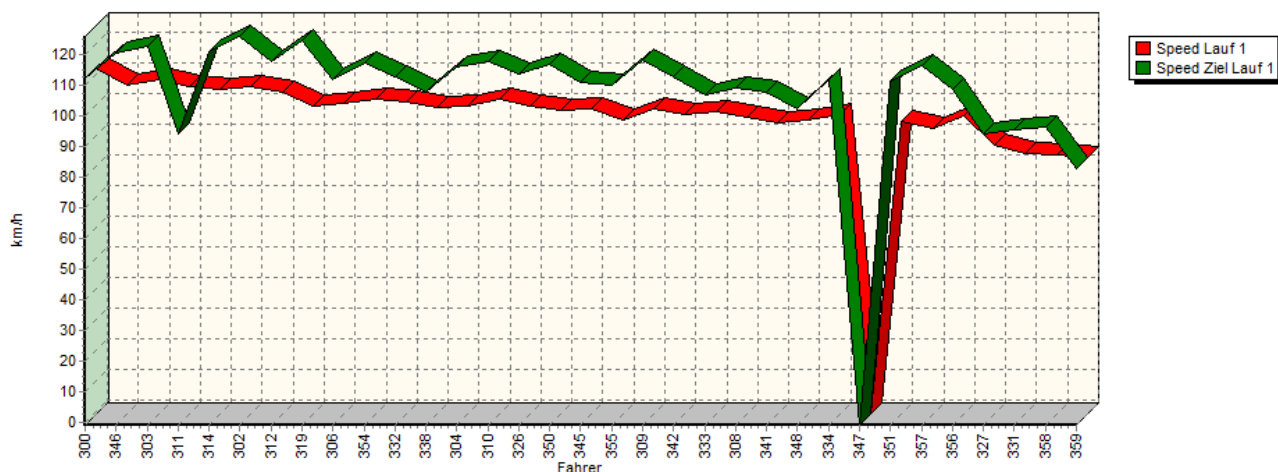
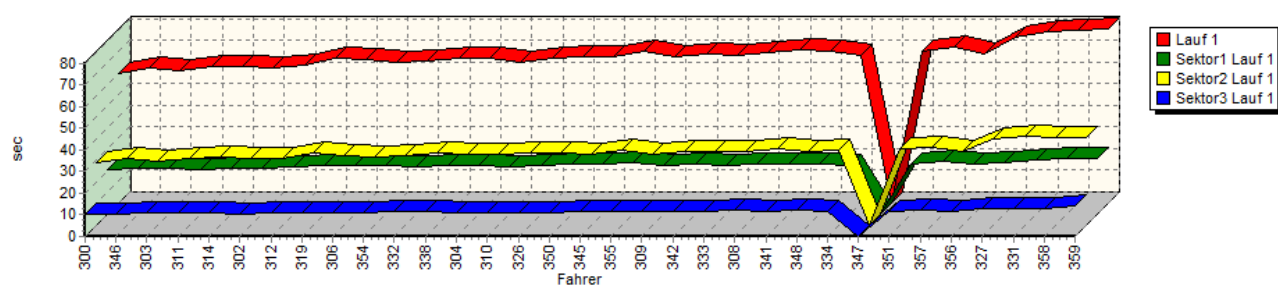


Sektorzeiten & Speeds - Groupe E1-National+E1-FIA+E1-EX Classe 23: +1600-2000 ccm

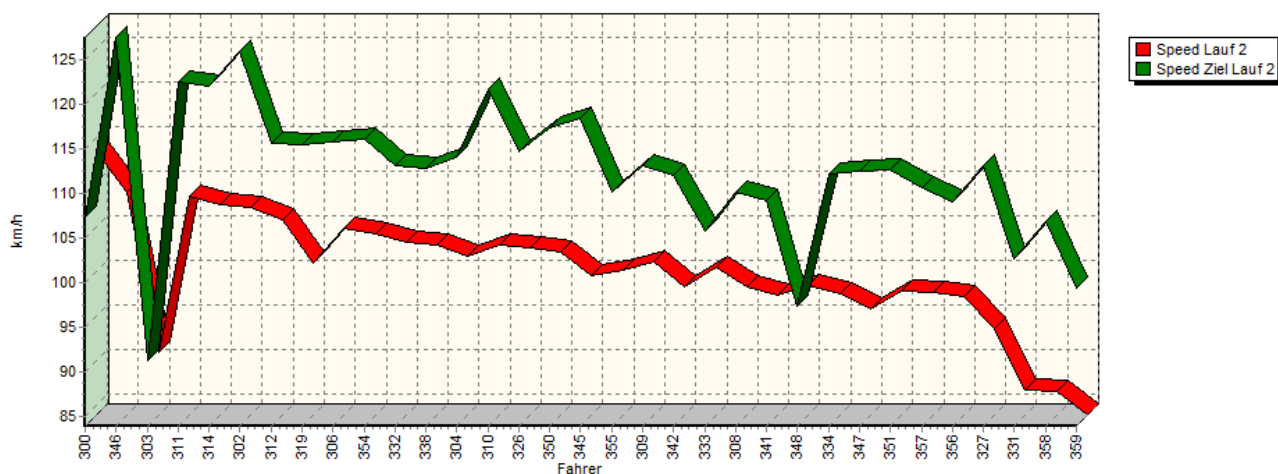
Speed-Diagramm Lauf 1



Sektor-Diagramm (Rest) Lauf 1

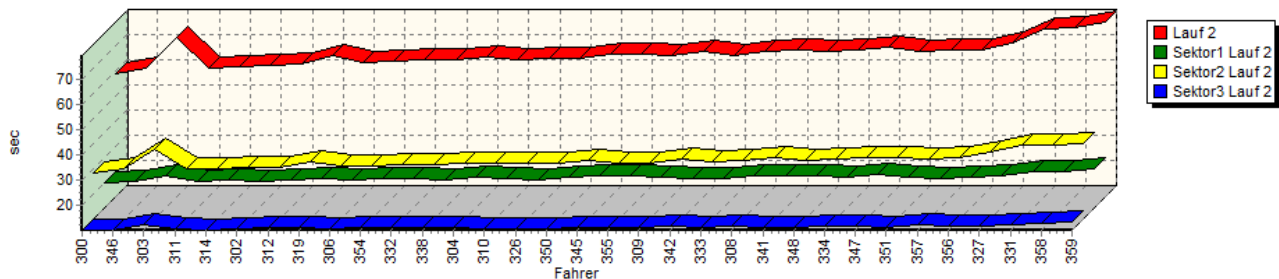


Speed-Diagramm Lauf 2

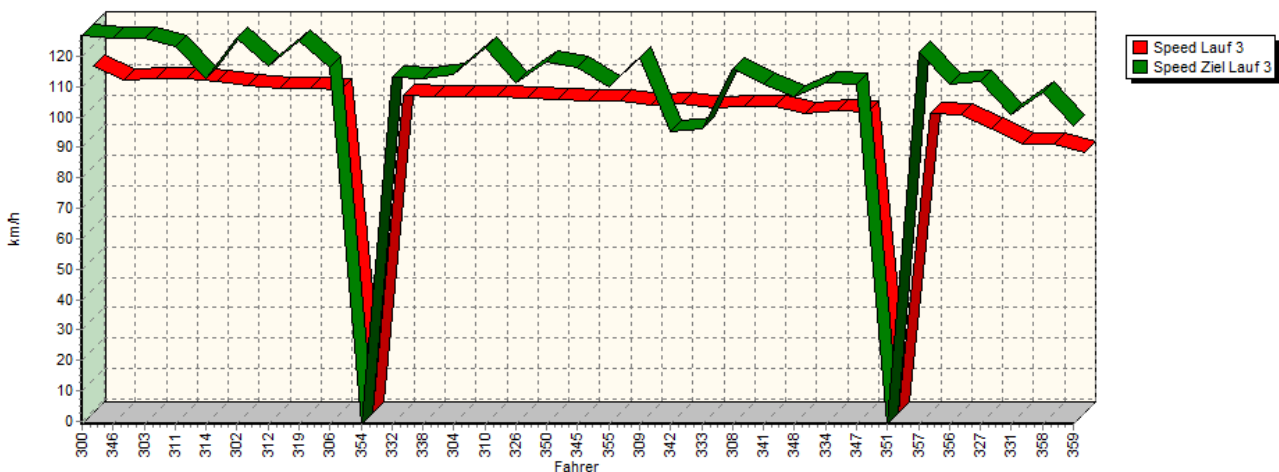


Sektorzeiten & Speeds - Groupe E1-National+E1-FIA+E1-EX Classe 23: +1600-2000 ccm

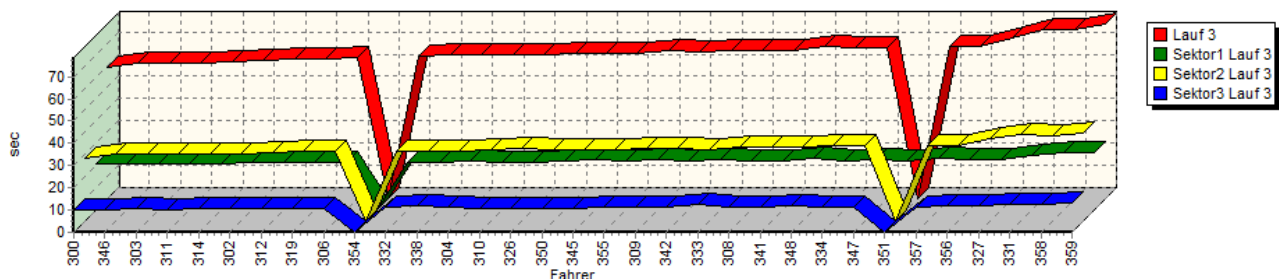
Sektor-Diagramm (Rest) Lauf 2



Speed-Diagramm Lauf 3



Sektor-Diagramm (Rest) Lauf 3



Rg.	Nr.	Sektor 1	Sektor 2	Sektor 3	Speed Ziel	Laufzeit	Speed (Lauf)	
1	300	WEIDINGER Jörg		BMW E36 STW				
		Lauf 1:	00:20.661	00:28.676	00:10.221	112,32 km/h	00:59.558	111,82 km/h
		Lauf 2:	00:20.184	00:28.431	00:10.133	107,29 km/h	00:58.748	113,37 km/h
		Lauf 3:	00:20.667	00:28.245	00:10.059	126,86 km/h	00:58.971	112,94 km/h



European Hill Race

Bergrennen Eschdorf

1. - 3. Mai 2015

Luxemburger Bergmeisterschaft 2015

Deutsche Bergmeisterschaft 2015

KW Berg-Cup 2015

NSU Bergpokal 2015



Sektorzeiten & Speeds - Groupe E1-National+E1-FIA+E1-EX Classe 23: +1600-2000 ccm

Rg.	Nr.	Sektor 1	Sektor 2	Sektor 3	Speed Ziel	Laufzeit	Speed (Lauf)
2	346	PISANO Egidio	VW Minichberger-Golf STW 16V				
		Lauf 1: 00:21.137	00:30.921	00:10.352	120,51 km/h	01:02.410	106,71 km/h
		Lauf 2: 00:20.633	00:30.295	00:10.220	127,54 km/h	01:01.148	108,92 km/h
		Lauf 3: 00:20.671	00:30.380	00:10.211	125,90 km/h	01:01.262	108,71 km/h
3	303	SONDERBAUER Roman	Opel Kadett C Coupé 16V				
		Lauf 1: 00:21.307	00:29.409	00:10.715	122,76 km/h	01:01.431	108,42 km/h
		Lauf 2: 00:22.620	00:38.058	00:12.595	91,21 km/h	01:13.273	90,89 km/h
		Lauf 3: 00:20.785	00:29.958	00:10.410	126,11 km/h	01:01.153	108,91 km/h
4	311	ORTH Patrick	BMW Frank E30 320is				
		Lauf 1: 00:20.833	00:30.969	00:11.018	94,38 km/h	01:02.820	106,02 km/h
		Lauf 2: 00:20.821	00:30.172	00:10.433	122,58 km/h	01:01.426	108,42 km/h
		Lauf 3: 00:20.710	00:30.129	00:10.326	123,27 km/h	01:01.165	108,88 km/h
5	314	PREISSER Dirk	Opel Kadett C Coupé 16V				
		Lauf 1: 00:21.403	00:31.298	00:10.660	120,98 km/h	01:03.361	105,11 km/h
		Lauf 2: 00:21.312	00:30.247	00:10.369	121,99 km/h	01:01.928	107,55 km/h
		Lauf 3: 00:20.803	00:30.121	00:10.790	112,84 km/h	01:01.714	107,92 km/h
6	302	NAUMANN Peter	VW Polo 1.4 G40 16V				
		Lauf 1: 00:21.329	00:31.005	00:10.354	126,11 km/h	01:02.688	106,24 km/h
		Lauf 2: 00:20.758	00:30.877	00:10.462	125,94 km/h	01:02.097	107,25 km/h
		Lauf 3: 00:21.362	00:30.333	00:10.602	126,02 km/h	01:02.297	106,91 km/h
7	312	AUER Christian	BMW 2002 8V				
		Lauf 1: 00:21.954	00:30.958	00:10.949	117,95 km/h	01:03.861	104,29 km/h
		Lauf 2: 00:21.030	00:30.843	00:11.050	115,67 km/h	01:02.923	105,84 km/h
		Lauf 3: 00:21.488	00:30.795	00:10.786	116,72 km/h	01:03.069	105,60 km/h
8	319	SCHÖNBORN Rainer	VW Golf I 16V				
		Lauf 1: 00:22.224	00:33.676	00:10.810	124,89 km/h	01:06.710	99,83 km/h
		Lauf 2: 00:21.586	00:33.096	00:11.323	115,47 km/h	01:06.005	100,90 km/h
		Lauf 3: 00:21.109	00:31.247	00:10.660	125,22 km/h	01:03.016	105,69 km/h
9	306	DÜMLER Christian	VW Golf II 8V				
		Lauf 1: 00:22.746	00:32.363	00:11.128	112,16 km/h	01:06.237	100,55 km/h
		Lauf 2: 00:21.484	00:31.385	00:10.663	115,83 km/h	01:03.532	104,83 km/h
		Lauf 3: 00:21.454	00:31.185	00:10.600	116,44 km/h	01:03.239	105,31 km/h
10	354	SCHWILDEN Eric	Peugeot 205 GTI				
		Lauf 1: 00:22.450	00:31.563	00:11.161	117,67 km/h	01:05.174	102,19 km/h
		Lauf 2: 00:21.575	00:31.259	00:11.088	116,08 km/h	01:03.922	104,19 km/h
		Lauf 3: *	*	*	* km/h	A	* km/h
11	332	EHRLE Bernd	Opel Krause Kadett C 8V				
		Lauf 1: 00:22.144	00:32.276	00:11.431	112,86 km/h	01:05.851	101,14 km/h
		Lauf 2: 00:21.654	00:31.756	00:11.092	113,17 km/h	01:04.502	103,25 km/h
		Lauf 3: 00:21.477	00:31.581	00:11.356	113,15 km/h	01:04.414	103,39 km/h
12	338	GLASS Stefan	Ford Escort Lotus TC				
		Lauf 1: 00:22.316	00:33.578	00:11.281	107,99 km/h	01:07.175	99,14 km/h
		Lauf 2: 00:21.418	00:31.980	00:11.250	112,74 km/h	01:04.648	103,02 km/h
		Lauf 3: 00:21.538	00:31.325	00:11.693	112,85 km/h	01:04.556	103,17 km/h
13	304	FLIK Thomas	Renault Clio Williams				
		Lauf 1: 00:22.763	00:33.088	00:11.048	115,92 km/h	01:06.899	99,55 km/h
		Lauf 2: 00:22.069	00:32.193	00:11.221	114,10 km/h	01:05.483	101,71 km/h
		Lauf 3: 00:21.880	00:31.574	00:11.112	114,14 km/h	01:04.566	103,15 km/h



European Hill Race

Bergrennen Eschdorf

1. - 3. Mai 2015

Luxemburger Bergmeisterschaft 2015

Deutsche Bergmeisterschaft 2015

KW Berg-Cup 2015

NSU Bergpokal 2015



Sektorzeiten & Speeds - Groupe E1-National+E1-FIA+E1-EX Classe 23: +1600-2000 ccm

Rg.	Nr.	Sektor 1	Sektor 2	Sektor 3	Speed Ziel	Laufzeit	Speed (Lauf)	
14	310	GÖSER Günter	Opel Kadett C Coupé 16V					
		Lauf 1:	00:21.780	00:32.632	00:10.876	117,75 km/h	01:05.288	102,01 km/h
		Lauf 2:	00:21.556	00:32.278	00:10.908	121,77 km/h	01:04.742	102,87 km/h
		Lauf 3:	00:21.494	00:32.329	00:10.948	122,76 km/h	01:04.771	102,82 km/h
15	326	WEBER Jens	Opel Kadett C 16V					
		Lauf 1:	00:22.233	00:33.487	00:11.169	113,96 km/h	01:06.889	99,57 km/h
		Lauf 2:	00:21.425	00:32.557	00:10.917	114,65 km/h	01:04.899	102,62 km/h
		Lauf 3:	00:21.656	00:32.381	00:10.864	111,28 km/h	01:04.901	102,62 km/h
16	350	DE KERCHOVE Michel	Peugeot 406 STW					
		Lauf 1:	00:23.027	00:33.483	00:11.151	117,08 km/h	01:07.661	98,43 km/h
		Lauf 2:	00:22.231	00:32.137	00:10.818	117,42 km/h	01:05.186	102,17 km/h
		Lauf 3:	00:22.071	00:32.265	00:10.980	118,32 km/h	01:05.316	101,97 km/h
17	345	KOKOR Andreas	Ford Escort MK1					
		Lauf 1:	00:22.992	00:32.995	00:11.371	110,92 km/h	01:07.358	98,87 km/h
		Lauf 2:	00:22.687	00:33.153	00:11.103	118,51 km/h	01:06.943	99,49 km/h
		Lauf 3:	00:22.465	00:32.183	00:10.892	116,32 km/h	01:05.540	101,62 km/h
18	355	SCHWARZ Thomas	Renault Clio 2 Cup					
		Lauf 1:	00:23.540	00:34.781	00:11.591	110,35 km/h	01:09.912	95,26 km/h
		Lauf 2:	00:22.927	00:32.363	00:11.227	110,10 km/h	01:06.517	100,13 km/h
		Lauf 3:	00:21.852	00:32.203	00:11.605	109,99 km/h	01:05.660	101,43 km/h
19	309	WEISS Werner	Ford Zakspeed Escort RS1800					
		Lauf 1:	00:22.656	00:32.981	00:11.768	118,31 km/h	01:07.405	98,80 km/h
		Lauf 2:	00:22.355	00:32.259	00:11.294	113,13 km/h	01:05.908	101,05 km/h
		Lauf 3:	00:22.564	00:32.560	00:11.407	119,44 km/h	01:06.531	100,10 km/h
20	342	BAYER Daniel	Opel Kadett C Coupé					
		Lauf 1:	00:22.905	00:34.335	00:11.517	112,99 km/h	01:08.757	96,86 km/h
		Lauf 2:	00:22.029	00:33.777	00:11.929	111,97 km/h	01:07.735	98,32 km/h
		Lauf 3:	00:22.009	00:32.805	00:11.396	95,09 km/h	01:06.210	100,59 km/h
21	333	HATEZIC Johann	Opel Ascona B Frank 8V					
		Lauf 1:	00:22.311	00:34.228	00:11.592	106,88 km/h	01:08.131	97,75 km/h
		Lauf 2:	00:21.844	00:33.089	00:11.408	105,76 km/h	01:06.341	100,39 km/h
		Lauf 3:	00:22.451	00:32.082	00:12.358	95,93 km/h	01:06.891	99,57 km/h
22	308	FLIK Beatrice	Renault Mégane Cup					
		Lauf 1:	00:23.436	00:33.884	00:11.970	109,06 km/h	01:09.290	96,12 km/h
		Lauf 2:	00:22.643	00:33.539	00:11.580	110,20 km/h	01:07.762	98,28 km/h
		Lauf 3:	00:22.230	00:33.014	00:11.433	115,64 km/h	01:06.677	99,88 km/h
23	341	PLEIER Alexander	Opel Kadett C Coupé					
		Lauf 1:	00:23.292	00:35.641	00:11.727	108,01 km/h	01:10.660	94,25 km/h
		Lauf 2:	00:22.739	00:34.374	00:11.352	109,27 km/h	01:08.465	97,28 km/h
		Lauf 3:	00:22.062	00:33.471	00:11.279	110,96 km/h	01:06.812	99,68 km/h
24	348	BLÄSIUS Manfred	BMW E21 320i					
		Lauf 1:	00:23.448	00:33.974	00:12.529	102,35 km/h	01:09.951	95,21 km/h
		Lauf 2:	00:22.846	00:33.403	00:11.394	97,32 km/h	01:07.643	98,46 km/h
		Lauf 3:	00:23.282	00:33.529	00:11.632	106,86 km/h	01:08.443	97,31 km/h
25	334	LANG Bernhard	Ford Escort RS2000 8V					
		Lauf 1:	00:22.310	00:34.780	00:11.452	112,06 km/h	01:08.542	97,17 km/h
		Lauf 2:	00:22.555	00:34.087	00:11.653	112,12 km/h	01:08.295	97,52 km/h
		Lauf 3:	00:21.882	00:34.195	00:11.627	111,10 km/h	01:07.704	98,37 km/h



European Hill Race

Bergrennen Eschdorf

1. - 3. Mai 2015

Luxemburger Bergmeisterschaft 2015

Deutsche Bergmeisterschaft 2015

KW Berg-Cup 2015

NSU Bergpokal 2015



Sektorzeiten & Speeds - Groupe E1-National+E1-FIA+E1-EX Classe 23: +1600-2000 ccm

Rg.	Nr.	Sektor 1	Sektor 2	Sektor 3	Speed Ziel	Laufzeit	Speed (Lauf)
26	347	KELLEN Bob		Ford Escort MK2 Rallye			
		Lauf 1:	*	*	* km/h	*	* km/h
		Lauf 2:	00:23.271	00:34.589	00:11.752	112,44 km/h	01:09.612 95,67 km/h
		Lauf 3:	00:22.781	00:33.645	00:11.400	110,60 km/h	01:07.826 98,19 km/h
27	351	DEFESCHE Benjamin		VW Scirocco			
		Lauf 1:	00:23.404	00:35.308	00:11.724	111,55 km/h	01:10.436 94,55 km/h
		Lauf 2:	00:22.336	00:34.257	00:11.476	112,64 km/h	01:08.069 97,84 km/h
		Lauf 3:	00:22.062	*	*	* km/h	A * km/h
28	357	SOISSON Claude		Opel Manta B			
		Lauf 1:	00:24.293	00:35.745	00:12.152	116,48 km/h	01:12.190 92,26 km/h
		Lauf 2:	00:21.989	00:34.078	00:12.179	110,58 km/h	01:08.246 97,59 km/h
		Lauf 3:	00:23.159	00:33.683	00:11.589	121,28 km/h	01:08.431 97,32 km/h
29	356	SEGUIN Manu		Renault Clio 2 Cup			
		Lauf 1:	00:22.910	00:34.251	00:11.762	108,79 km/h	01:08.923 96,63 km/h
		Lauf 2:	00:22.551	00:34.324	00:11.668	109,13 km/h	01:08.543 97,16 km/h
		Lauf 3:	00:22.815	00:33.964	00:11.675	110,81 km/h	01:08.454 97,29 km/h
30	327	RUWE Mario		VW Brügge Golf GTI 16V			
		Lauf 1:	00:23.843	00:39.723	00:12.911	94,20 km/h	01:16.477 87,09 km/h
		Lauf 2:	00:22.620	00:36.702	00:11.820	113,17 km/h	01:11.142 93,62 km/h
		Lauf 3:	00:22.746	00:37.175	00:12.230	111,87 km/h	01:12.151 92,31 km/h
31	331	SCHUG Martin		VW Golf II 16V			
		Lauf 1:	00:25.029	00:41.141	00:12.937	95,70 km/h	01:19.107 84,19 km/h
		Lauf 2:	00:24.512	00:39.691	00:12.620	102,60 km/h	01:16.823 86,69 km/h
		Lauf 3:	00:24.250	00:39.154	00:12.570	100,61 km/h	01:15.974 87,66 km/h
32	358	JUNIUS Alain		Renault Clio Williams			
		Lauf 1:	00:25.739	00:40.655	00:13.191	96,39 km/h	01:19.585 83,68 km/h
		Lauf 2:	00:24.733	00:39.554	00:12.683	106,92 km/h	01:16.970 86,53 km/h
		Lauf 3:	00:25.723	00:38.154	00:12.473	108,03 km/h	01:16.350 87,23 km/h
33	359	HUBER Ivana		Renault Clio Williams 16V			
		Lauf 1:	00:25.684	00:40.867	00:13.930	82,95 km/h	01:20.481 82,75 km/h
		Lauf 2:	00:25.551	00:40.283	00:13.615	99,35 km/h	01:19.449 83,83 km/h
		Lauf 3:	00:25.572	00:39.618	00:13.400	97,18 km/h	01:18.590 84,74 km/h