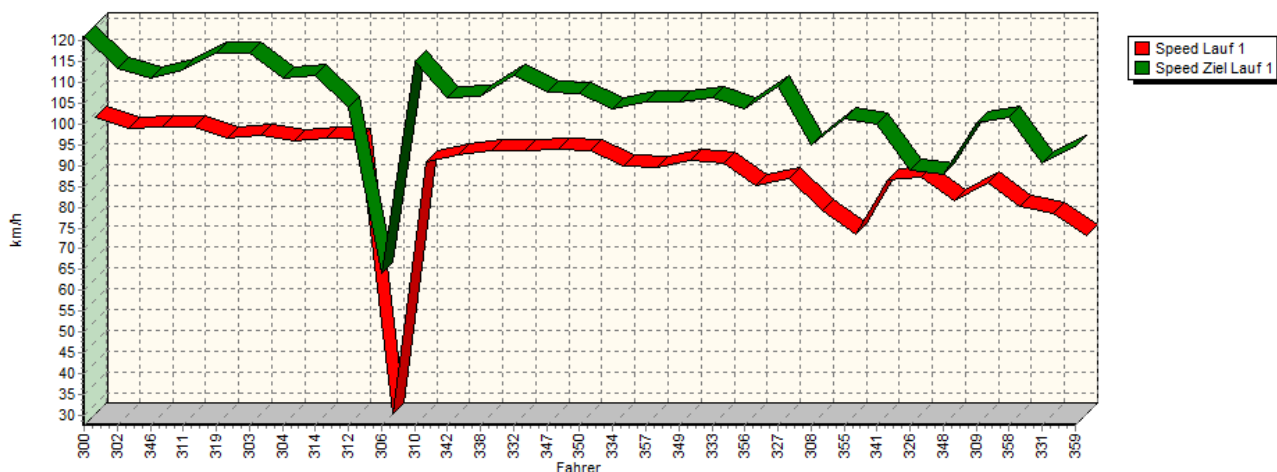
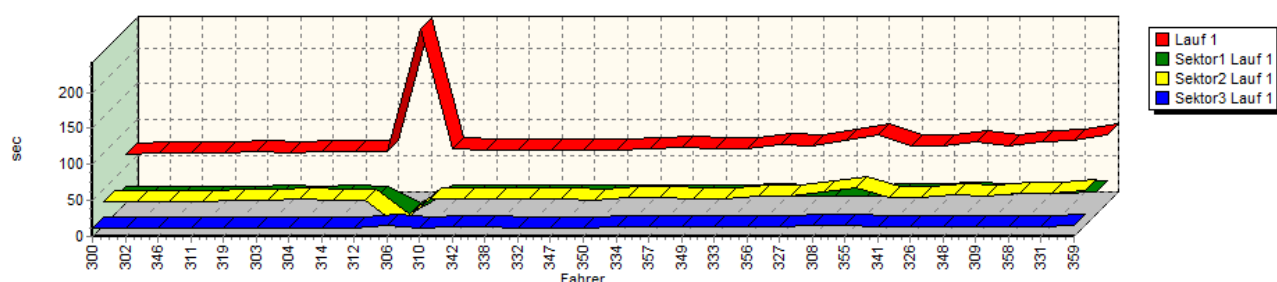


## Sektorzeiten & Speeds - Groupe E1-National+E1-FIA+E1-EX Classe 23: +1600-2000 ccm

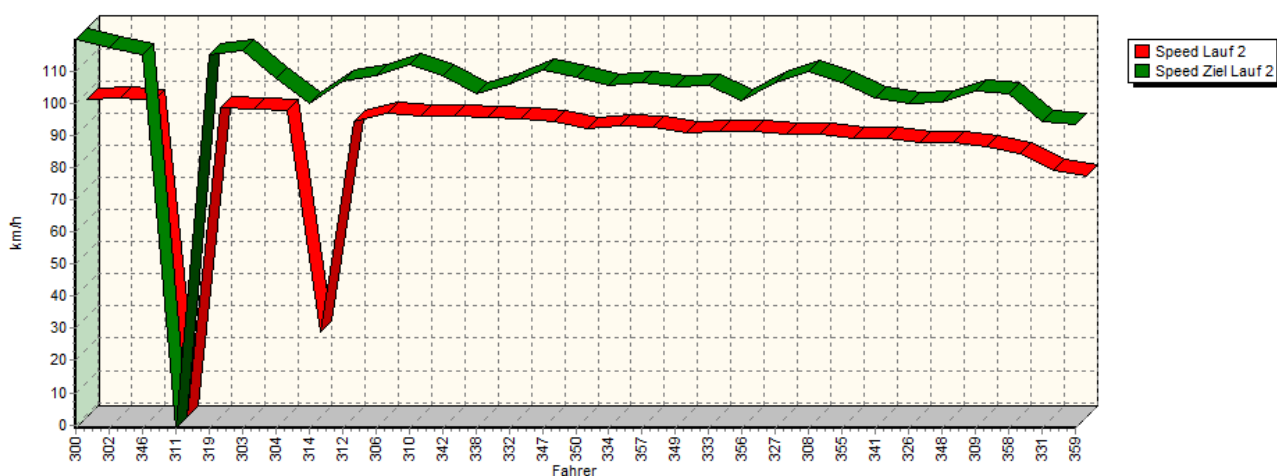
Speed-Diagramm Lauf 1



Sektor-Diagramm (Rest) Lauf 1

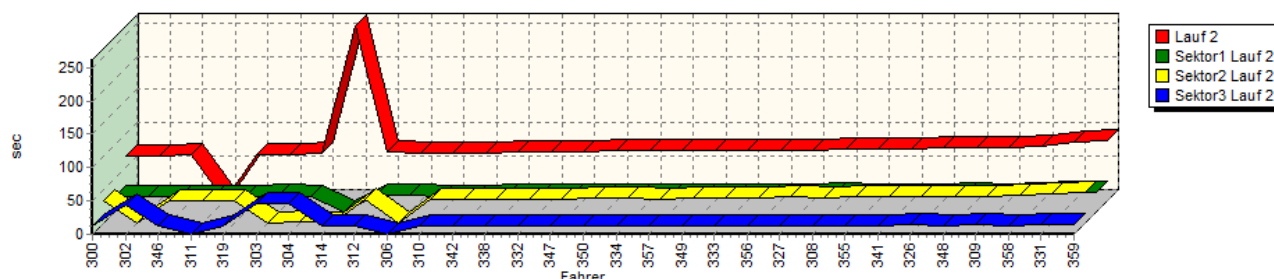


Speed-Diagramm Lauf 2



## Sektorzeiten & Speeds - Groupe E1-National+E1-FIA+E1-EX Classe 23: +1600-2000 ccm

Sektor-Diagramm (Rest) Lauf 2



Rg.	Nr.	Sektor 1	Sektor 2	Sektor 3	Speed Ziel	Laufzeit	Speed (Lauf)
1	300	<b>WEIDINGER Jörg</b>	BMW E36 STW				
		Lauf 1: 00:22.909	00:32.837	00:11.480	121,11 km/h	01:07.226	99,07 km/h
		Lauf 2: 00:23.470	00:32.879	00:11.737	119,80 km/h	01:08.086	97,82 km/h
2	302	<b>NAUMANN Peter</b>	VW Polo 1.4 G40 16V				
		Lauf 1: 00:23.734	00:33.673	00:11.741	113,46 km/h	01:09.148	96,32 km/h
		Lauf 2: 00:23.318	00:00.490	00:44.175	117,07 km/h	01:07.983	97,97 km/h
3	346	<b>PISANO Egidio</b>	VW Minichberger-Golf STW 16V				
		Lauf 1: 00:23.538	00:33.542	00:11.907	111,06 km/h	01:08.987	96,54 km/h
		Lauf 2: 00:23.342	00:33.269	00:11.871	115,08 km/h	01:08.482	97,25 km/h
4	311	<b>ORTH Patrick</b>	BMW Frank E30 320is				
		Lauf 1: 00:23.634	00:33.260	00:12.077	112,92 km/h	01:08.971	96,56 km/h
		Lauf 2: 00:23.949	00:33.074	*	* km/h	A	* km/h
5	319	<b>SCHÖNBORN Rainer</b>	VW Golf I 16V				
		Lauf 1: 00:23.869	00:34.928	00:12.177	117,05 km/h	01:10.974	93,84 km/h
		Lauf 2: 00:23.985	00:33.983	00:12.112	115,11 km/h	01:10.080	95,03 km/h
6	303	<b>SONDERBAUER Roman</b>	Opel Kadett C Coupé 16V				
		Lauf 1: 00:24.384	00:33.966	00:11.998	117,12 km/h	01:10.348	94,67 km/h
		Lauf 2: 00:24.247	00:00.286	00:46.236	116,29 km/h	01:10.197	94,88 km/h
7	304	<b>FLIK Thomas</b>	Renault Clio Williams				
		Lauf 1: 00:23.451	00:35.866	00:12.085	110,94 km/h	01:11.402	93,27 km/h
		Lauf 2: 00:23.524	00:01.106	00:46.156	107,86 km/h	01:10.786	94,09 km/h
8	314	<b>PREISSER Dirk</b>	Opel Kadett C Coupé 16V				
		Lauf 1: 00:24.459	00:34.475	00:12.023	111,57 km/h	01:10.957	93,86 km/h
		Lauf 2: *	*	00:12.756	99,80 km/h	04:22.145	25,41 km/h
9	312	<b>AUER Christian</b>	BMW 2002 8V				
		Lauf 1: 00:23.991	00:34.855	00:12.413	103,92 km/h	01:11.259	93,46 km/h
		Lauf 2: 00:25.121	00:35.715	00:12.382	106,60 km/h	01:13.218	90,96 km/h
10	306	<b>DÜMLER Christian</b>	VW Golf II 8V				
		Lauf 1: *	*	00:15.552	63,97 km/h	04:01.644	27,56 km/h
		Lauf 2: 00:24.383	*	*	108,72 km/h	01:11.384	93,30 km/h
11	310	<b>GÖSER Günter</b>	Opel Kadett C Coupé 16V				
		Lauf 1: 00:25.427	00:37.646	00:12.302	114,98 km/h	01:15.375	88,36 km/h
		Lauf 2: 00:23.657	00:36.301	00:12.125	111,83 km/h	01:12.083	92,39 km/h
12	342	<b>BAYER Daniel</b>	Opel Kadett C Coupé				
		Lauf 1: 00:24.789	00:36.641	00:12.671	106,25 km/h	01:14.101	89,88 km/h
		Lauf 2: 00:23.628	00:35.849	00:12.641	108,65 km/h	01:12.118	92,35 km/h



# European Hill Race

Bergrennen Eschdorf

1. - 3. Mai 2015

Luxemburger Bergmeisterschaft 2015

Deutsche Bergmeisterschaft 2015

KW Berg-Cup 2015

NSU Bergpokal 2015



## Sektorzeiten & Speeds - Groupe E1-National+E1-FIA+E1-EX Classe 23: +1600-2000 ccm

Rg.	Nr.	Sektor 1	Sektor 2	Sektor 3	Speed Ziel	Laufzeit	Speed (Lauf)	
13	338	<b>GLASS Stefan</b>		Ford Escort Lotus TC				
		Lauf 1:	00:24.587	00:35.986	00:12.642	106,55 km/h	01:13.215	90,97 km/h
		Lauf 2:	00:24.341	00:35.102	00:12.933	102,99 km/h	01:12.376	92,02 km/h
14	332	<b>EHRLE Bernd</b>		Opel Krause Kadett C 8V				
		Lauf 1:	00:24.618	00:36.268	00:12.262	111,88 km/h	01:13.148	91,05 km/h
		Lauf 2:	00:24.314	00:35.636	00:12.807	105,94 km/h	01:12.757	91,54 km/h
15	347	<b>KELLEN Bob</b>		Ford Escort MK2 Rallye				
		Lauf 1:	00:24.523	00:35.859	00:12.482	107,54 km/h	01:12.864	91,40 km/h
		Lauf 2:	00:24.301	00:36.510	00:12.372	110,18 km/h	01:13.183	91,00 km/h
16	350	<b>DE KERCHOVE Michel</b>		Peugeot 406 STW				
		Lauf 1:	00:25.225	00:35.729	00:12.205	107,39 km/h	01:13.159	91,03 km/h
		Lauf 2:	00:25.772	00:36.953	00:12.490	108,31 km/h	01:15.215	88,55 km/h
17	334	<b>LANG Bernhard</b>		Ford Escort RS2000 8V				
		Lauf 1:	00:25.078	00:37.801	00:13.392	103,55 km/h	01:16.271	87,32 km/h
		Lauf 2:	00:24.997	00:36.899	00:12.627	105,51 km/h	01:14.523	89,37 km/h
18	357	<b>SOISSON Claude</b>		Opel Manta B				
		Lauf 1:	00:25.254	00:38.272	00:13.009	105,45 km/h	01:16.535	87,02 km/h
		Lauf 2:	00:25.015	00:36.567	00:13.115	106,54 km/h	01:14.697	89,16 km/h
19	349	<b>KRUHS Gino</b>		Renault Mégane Maxi 16V				
		Lauf 1:	00:25.201	00:37.262	00:12.641	105,32 km/h	01:15.104	88,68 km/h
		Lauf 2:	00:25.879	00:37.247	00:12.962	104,95 km/h	01:16.088	87,53 km/h
20	333	<b>HATEZIC Johann</b>		Opel Ascona B Frank 8V				
		Lauf 1:	00:25.283	00:37.473	00:13.112	106,38 km/h	01:15.868	87,78 km/h
		Lauf 2:	00:25.363	00:37.961	00:12.734	105,32 km/h	01:16.058	87,56 km/h
21	356	<b>SEGUIN Manu</b>		Renault Clio 2 Cup				
		Lauf 1:	00:26.163	00:40.949	00:13.544	103,83 km/h	01:20.656	82,57 km/h
		Lauf 2:	00:25.108	00:37.729	00:13.060	100,64 km/h	01:15.897	87,75 km/h
22	327	<b>RUWE Mario</b>		VW Brügge Golf GTI 16V				
		Lauf 1:	00:25.043	00:41.036	00:13.032	108,96 km/h	01:19.111	84,19 km/h
		Lauf 2:	00:24.774	00:39.110	00:12.590	106,48 km/h	01:16.474	87,09 km/h
23	308	<b>FLIK Beatrice</b>		Renault Mégane Cup				
		Lauf 1:	00:25.549	00:45.618	00:15.743	95,03 km/h	01:26.910	76,63 km/h
		Lauf 2:	00:26.466	00:37.604	00:12.680	109,64 km/h	01:16.750	86,78 km/h
24	355	<b>SCHWARZ Thomas</b>		Renault Clio 2 Cup				
		Lauf 1:	00:25.528	00:53.072	00:15.478	101,37 km/h	01:34.078	70,79 km/h
		Lauf 2:	00:25.753	00:39.067	00:12.855	106,35 km/h	01:17.675	85,74 km/h
25	341	<b>PLEIER Alexander</b>		Opel Kadett C Coupé				
		Lauf 1:	00:26.861	00:39.405	00:13.087	100,07 km/h	01:19.353	83,93 km/h
		Lauf 2:	00:25.260	00:39.438	00:13.148	101,50 km/h	01:17.846	85,55 km/h
26	326	<b>WEBER Jens</b>		Opel Kadett C 16V				
		Lauf 1:	00:26.191	00:38.699	00:13.972	88,90 km/h	01:18.862	84,45 km/h
		Lauf 2:	00:25.998	00:39.436	00:13.633	99,92 km/h	01:19.067	84,23 km/h
27	348	<b>BLÄSIUS Manfred</b>		BMW E21 320i				
		Lauf 1:	00:28.510	00:41.756	00:14.201	87,96 km/h	01:24.467	78,85 km/h
		Lauf 2:	00:26.760	00:39.024	00:13.208	100,51 km/h	01:18.992	84,31 km/h
28	309	<b>WEISS Werner</b>		Ford Zakspeed Escort RS1800				
		Lauf 1:	00:26.351	00:39.865	00:13.863	100,26 km/h	01:20.079	83,17 km/h
		Lauf 2:	00:26.009	00:40.724	00:13.654	103,58 km/h	01:20.387	82,85 km/h



## European Hill Race

Bergrennen Eschdorf

1. - 3. Mai 2015

Luxemburger Bergmeisterschaft 2015

Deutsche Bergmeisterschaft 2015

KW Berg-Cup 2015

NSU Bergpokal 2015



### Sektorzeiten & Speeds - Groupe E1-National+E1-FIA+E1-EX Classe 23: +1600-2000 ccm

Rg.	Nr.		Sektor 1	Sektor 2	Sektor 3	Speed Ziel	Laufzeit	Speed (Lauf)
29	358	<b>JUNIUS Alain</b>		Renault Clio Williams				
		Lauf 1:	00:28.584	00:43.741	00:13.668	101,57 km/h	01:25.993	77,45 km/h
		Lauf 2:	00:27.190	00:41.696	00:13.574	103,06 km/h	01:22.460	80,77 km/h
30	331	<b>SCHUG Martin</b>		VW Golf II 16V				
		Lauf 1:	00:29.793	00:43.878	00:14.208	90,58 km/h	01:27.879	75,79 km/h
		Lauf 2:	00:28.727	00:43.777	00:15.465	94,21 km/h	01:27.969	75,71 km/h
31	359	<b>HUBER Ivana</b>		Renault Clio Williams 16V				
		Lauf 1:	00:30.586	00:48.162	00:15.553	94,72 km/h	01:34.301	70,62 km/h
		Lauf 2:	00:29.367	00:46.112	00:14.849	93,55 km/h	01:30.328	73,73 km/h