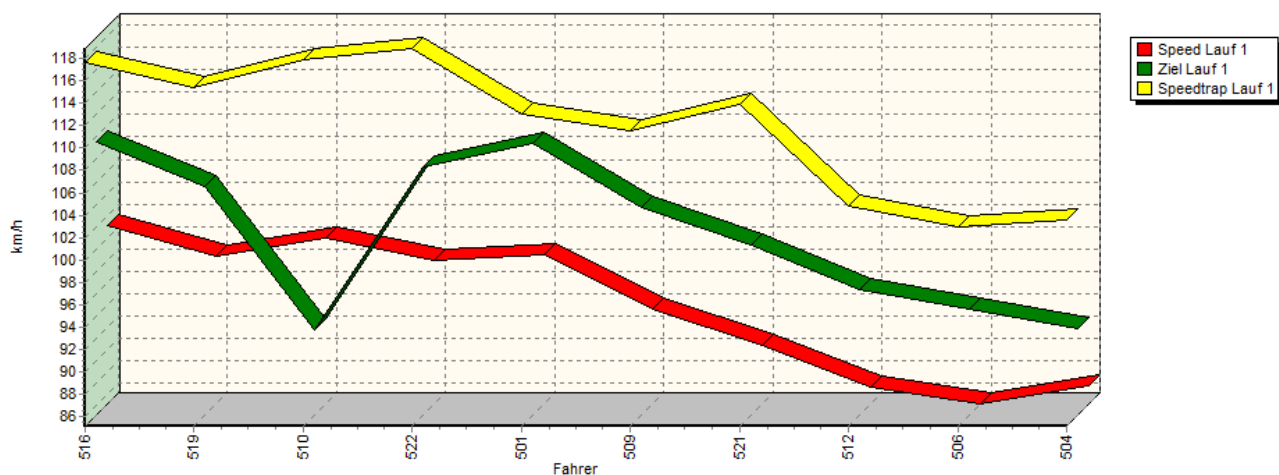
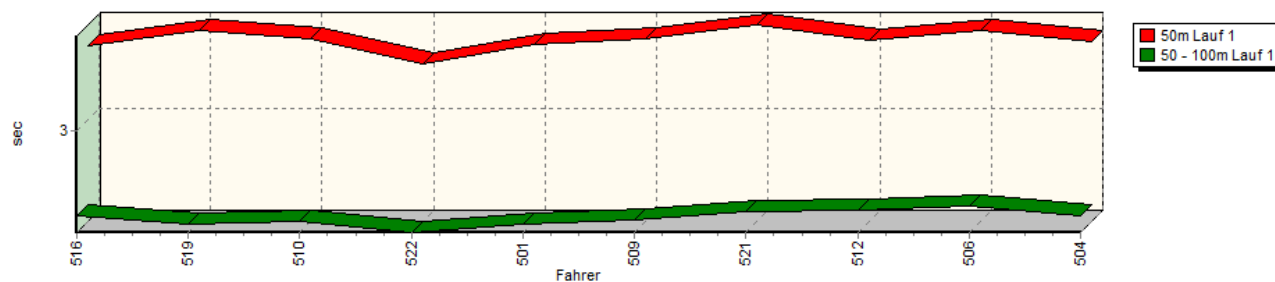


Sektorzeiten & Speeds - Training - NSU Bergpokal NSU Bergpokal - Klasse 14

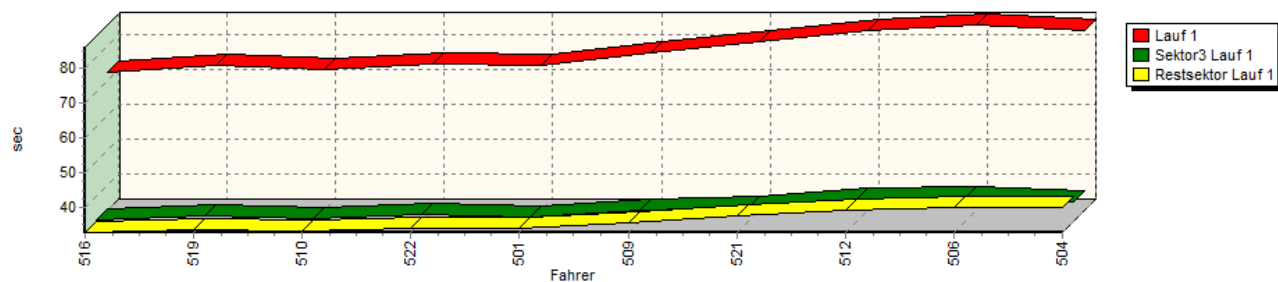
Speed-Diagramm Lauf 1



Sektor-Diagramm (Start) Lauf 1

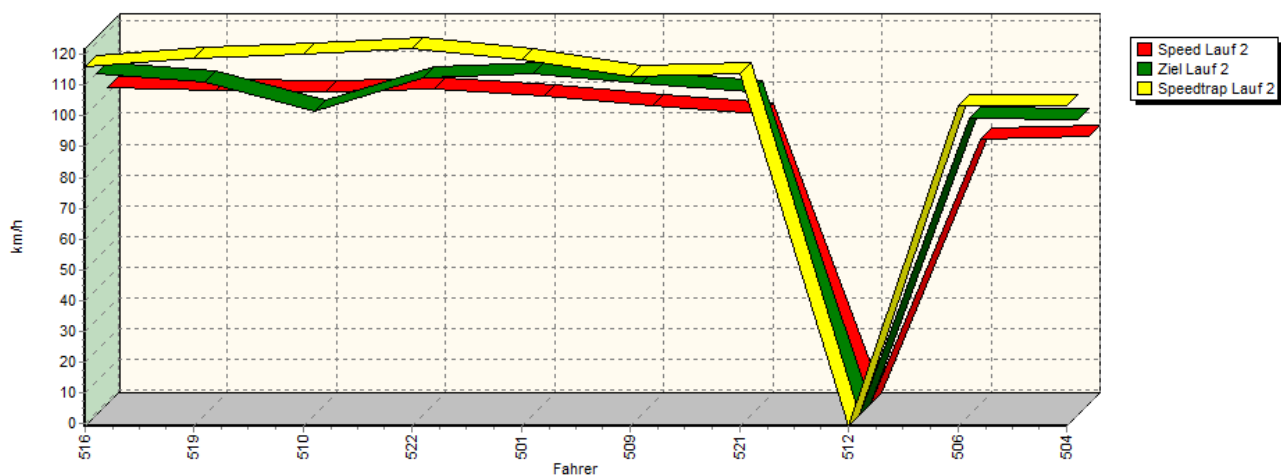


Sektor-Diagramm (Rest) Lauf 1

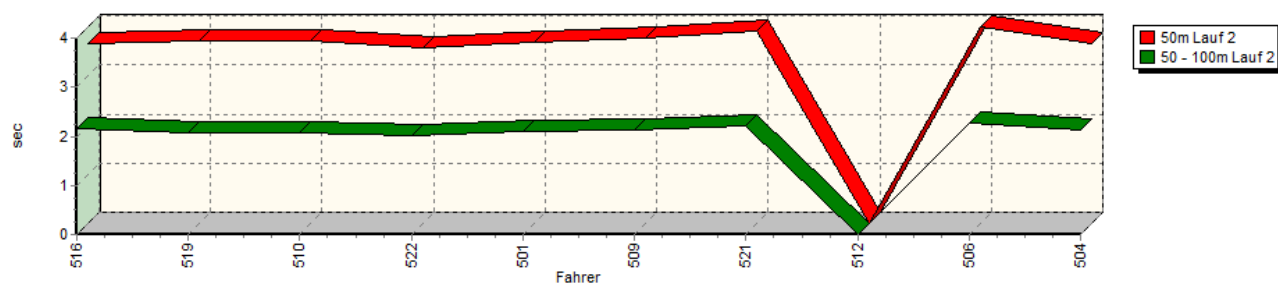


Sektorzeiten & Speeds - Training - NSU Bergpokal NSU Bergpokal - Klasse 14

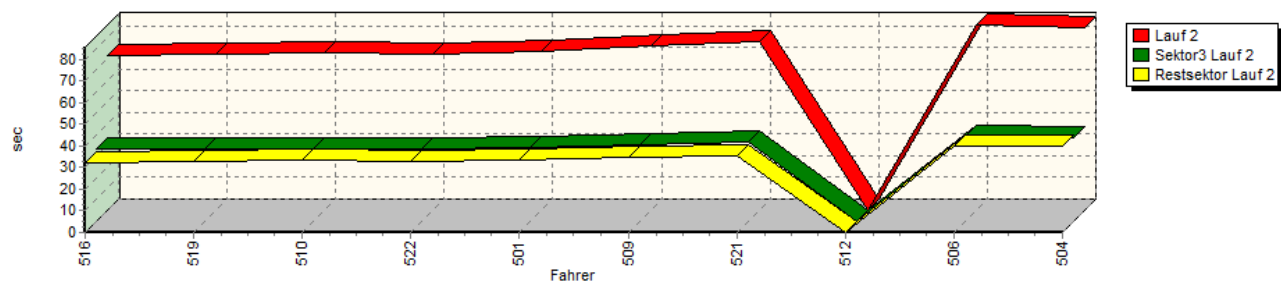
Speed-Diagramm Lauf 2



Sektor-Diagramm (Start) Lauf 2

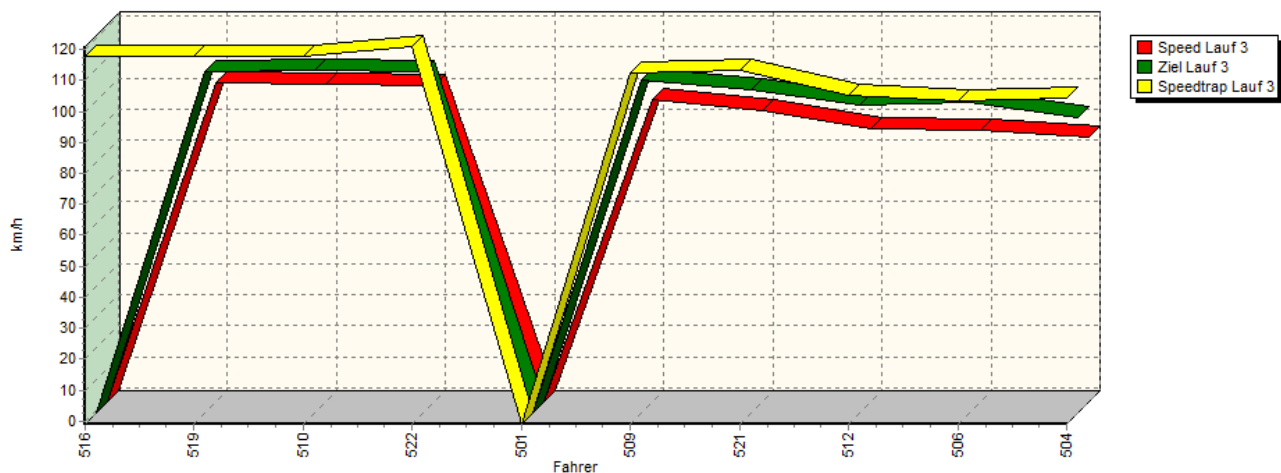


Sektor-Diagramm (Rest) Lauf 2

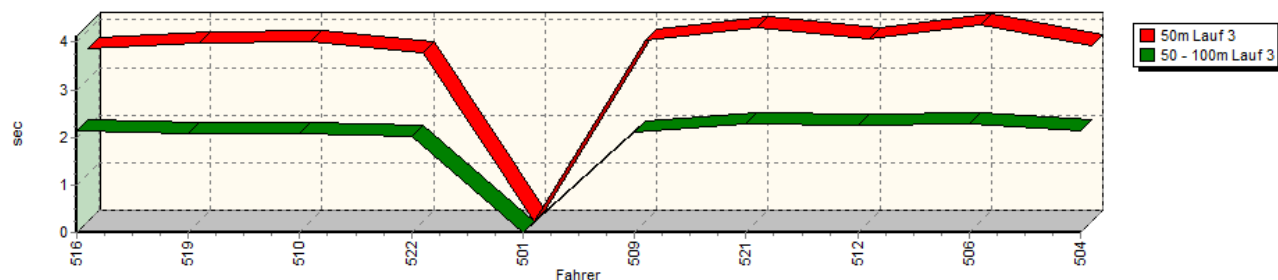


Sektorzeiten & Speeds - Training - NSU Bergpokal NSU Bergpokal - Klasse 14

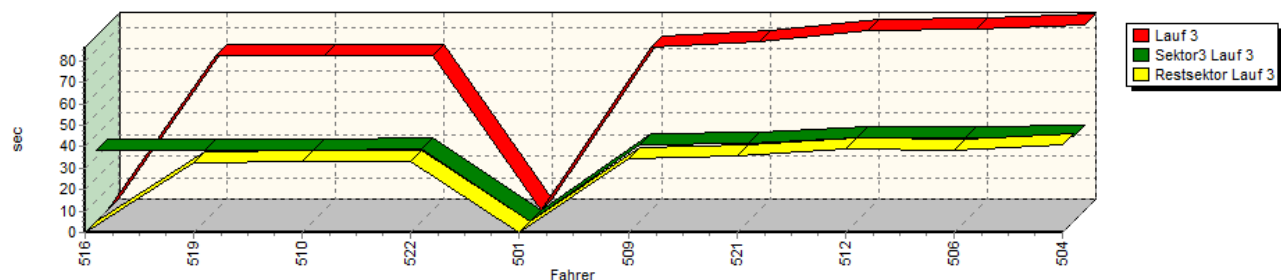
Speed-Diagramm Lauf 3



Sektor-Diagramm (Start) Lauf 3



Sektor-Diagramm (Rest) Lauf 3



Rg.	Nr.	Sektor 1 (50m)	Sektor 2 (50-100m)	Sektor 3	Speed Trap	Sektor 4	Speed (Ziel)	Laufzeit	Speed (Lauf)	
1	516	HÖBER Jörg								
		NSU TT								
		Lauf 1:	00:03.714	00:02.165	00:33.478	117,68 km/h	00:32.946	109,52 km/h	01:12.303	101,07 km/h
		Lauf 2:	00:03.675	00:02.160	00:33.295	116,15 km/h	00:32.506	110,13 km/h	01:11.636	102,02 km/h
		Lauf 3:	00:03.643	00:02.149	00:33.289	117,72 km/h	*	* km/h	A	* km/h

Sektorzeiten & Speeds - Training - NSU Bergpokal NSU Bergpokal - Klasse 14

Rg.	Nr.		Sektor 1 (50m)	Sektor 2 (50-100m)	Sektor 3	Speed Trap	Sektor 4	Speed (Ziel)	Laufzeit	Speed (Lauf)
2	519	DAVIDOVIC Jörg	NSU TT							
		Lauf 1:	00:03.871	00:02.094	00:34.544	115,39 km/h	00:33.837	105,61 km/h	01:14.346	98,30 km/h
		Lauf 2:	00:03.734	00:02.074	00:33.664	118,97 km/h	00:32.926	107,64 km/h	01:12.398	100,94 km/h
		Lauf 3:	00:03.743	00:02.069	00:33.383	117,63 km/h	00:32.579	109,14 km/h	01:11.774	101,82 km/h
3	510	HOFMANN Steffen	NSU TT							
		Lauf 1:	00:03.783	00:02.110	00:33.896	117,91 km/h	00:33.292	92,71 km/h	01:13.081	100,00 km/h
		Lauf 2:	00:03.715	00:02.088	00:33.208	120,02 km/h	00:33.487	98,01 km/h	01:12.498	100,80 km/h
		Lauf 3:	00:03.764	00:02.083	00:33.038	117,85 km/h	00:32.948	109,58 km/h	01:11.833	101,73 km/h
4	522	KRYSTOFIAK Thomas	NSU 1200C KWR							
		Lauf 1:	00:03.548	00:02.007	00:34.990	118,88 km/h	00:34.077	107,26 km/h	01:14.622	97,93 km/h
		Lauf 2:	00:03.593	00:02.008	00:33.509	121,98 km/h	00:32.871	108,98 km/h	01:11.981	101,53 km/h
		Lauf 3:	00:03.530	00:02.010	00:33.609	120,93 km/h	00:33.150	109,10 km/h	01:12.299	101,08 km/h
5	501	STEINERT Karsten	NSU 67							
		Lauf 1:	00:03.728	00:02.082	00:34.279	113,00 km/h	00:34.121	109,47 km/h	01:14.210	98,48 km/h
		Lauf 2:	00:03.703	00:02.101	00:33.986	118,38 km/h	00:33.672	110,08 km/h	01:13.462	99,48 km/h
		Lauf 3:	*	*	*	* km/h	*	* km/h	*	* km/h
6	509	MEURER Karlheinz	NSU TT							
		Lauf 1:	00:03.785	00:02.127	00:36.286	111,54 km/h	00:35.815	103,66 km/h	01:18.013	93,68 km/h
		Lauf 2:	00:03.789	00:02.120	00:35.676	112,78 km/h	00:34.471	107,19 km/h	01:16.056	96,09 km/h
		Lauf 3:	00:03.816	00:02.120	00:35.427	112,38 km/h	00:34.385	106,72 km/h	01:15.748	96,48 km/h
7	521	VOIGT Walter	NSU 1300							
		Lauf 1:	00:03.923	00:02.217	00:36.994	113,92 km/h	00:37.730	100,30 km/h	01:20.864	90,37 km/h
		Lauf 2:	00:03.913	00:02.223	00:36.568	113,96 km/h	00:35.547	104,24 km/h	01:18.251	93,39 km/h
		Lauf 3:	00:04.063	00:02.275	00:36.322	113,13 km/h	00:35.841	103,47 km/h	01:18.501	93,09 km/h
8	512	NEUNER Bernhard	NSU TT 67							
		Lauf 1:	00:03.777	00:02.226	00:39.117	104,82 km/h	00:39.176	96,31 km/h	01:24.296	86,70 km/h
		Lauf 2:	*	*	*	* km/h	*	* km/h	*	* km/h
		Lauf 3:	00:03.828	00:02.250	00:39.053	105,01 km/h	00:38.714	98,42 km/h	01:23.845	87,16 km/h
9	506	SCHABACKER Pit	NSU TT							
		Lauf 1:	00:03.862	00:02.267	00:39.516	102,97 km/h	00:40.150	94,59 km/h	01:25.795	85,18 km/h
		Lauf 2:	00:04.008	00:02.269	00:39.168	103,42 km/h	00:40.218	95,88 km/h	01:25.663	85,31 km/h
		Lauf 3:	00:04.129	00:02.288	00:39.255	103,35 km/h	00:38.578	99,18 km/h	01:24.250	86,74 km/h
10	504	SZOTT Roman	NSU TT							
		Lauf 1:	00:03.763	00:02.168	00:38.321	103,56 km/h	00:40.004	92,94 km/h	01:24.256	86,74 km/h
		Lauf 2:	00:03.667	00:02.142	00:38.727	103,47 km/h	00:40.110	95,11 km/h	01:24.646	86,34 km/h
		Lauf 3:	00:03.692	00:02.143	00:39.818	104,38 km/h	00:40.651	94,44 km/h	01:26.304	84,68 km/h