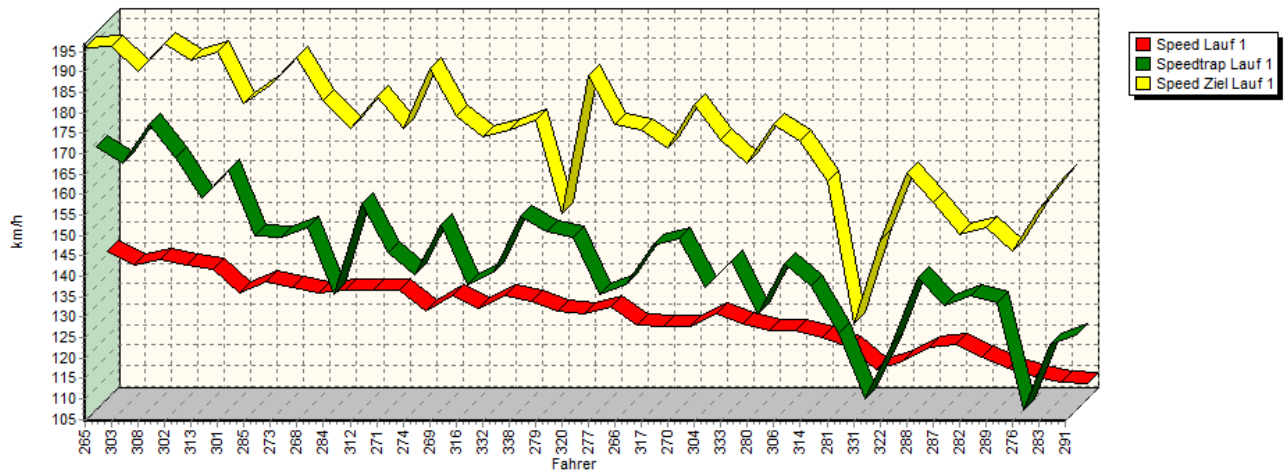
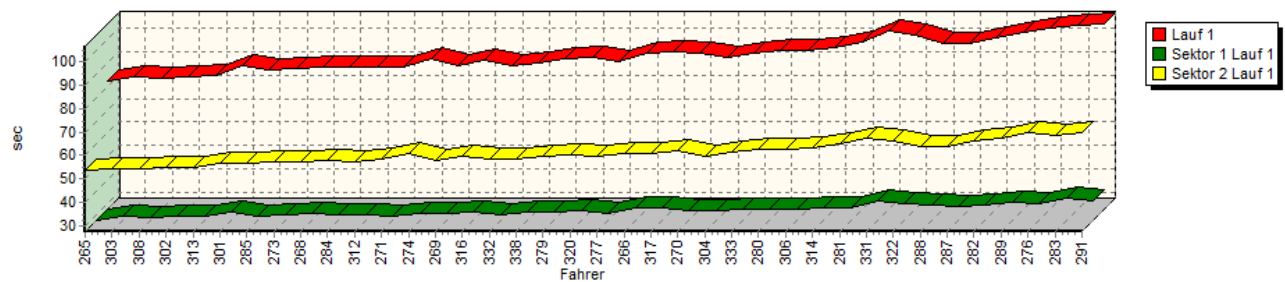


Sektorzeiten & Speeds - Rennen - Gruppe E1 & H bis 2000 ccm

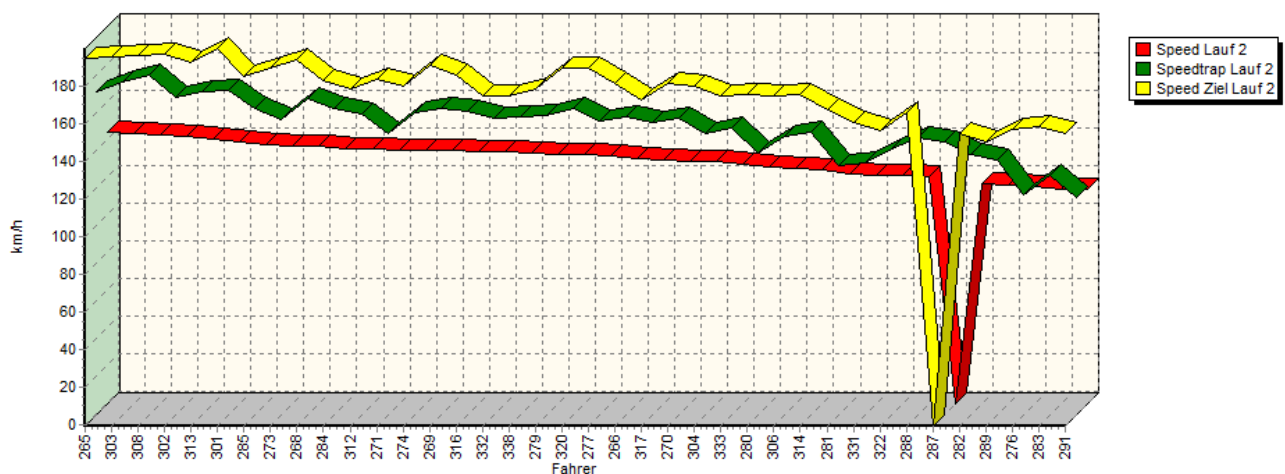
Speed-Diagramm Lauf 1

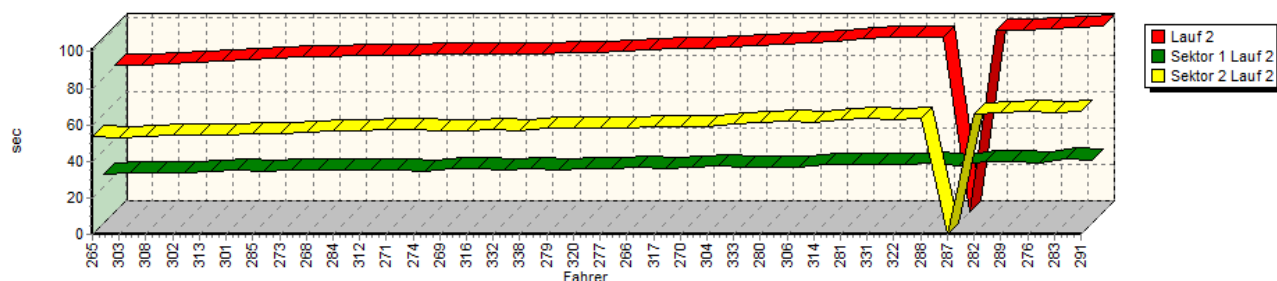


Sektor-Diagramm (Rest) Lauf 1



Speed-Diagramm Lauf 2



**Sektorzeiten & Speeds - Rennen - Gruppe E1 & H bis 2000 ccm****Sektor-Diagramm (Rest) Lauf 2**

| Rg. | Nr. | Sektor 1 | Speed Trap | Sektor 2 | Speed (Ziel) | Laufzeit | Speed (Lauf) |
|-----|-----|-----------------------------|---------------------|-----------|--------------|-----------|--------------|
| 1 | 265 | MARKO Andreas | Audi A4 STW Quattro | | | | |
| | | Lauf 1: 00:27.849 | 168,96 km/h | 00:54.013 | 195,89 km/h | 01:21.862 | 140,73 km/h |
| | | Lauf 2: 00:26.831 | 170,69 km/h | 00:53.520 | 194,49 km/h | 01:20.351 | 143,37 km/h |
| 2 | 303 | ELLER Hans-Peter | VW Scirocco | | | | |
| | | Lauf 1: 00:29.449 | 164,98 km/h | 00:54.560 | 196,23 km/h | 01:24.009 | 137,13 km/h |
| | | Lauf 2: 00:27.420 | 176,36 km/h | 00:53.227 | 195,43 km/h | 01:20.647 | 142,85 km/h |
| 3 | 308 | NAUMANN Peter | VW Polo G40 | | | | |
| | | Lauf 1: 00:28.977 | 174,39 km/h | 00:54.175 | 190,07 km/h | 01:23.152 | 138,54 km/h |
| | | Lauf 2: 00:27.494 | 179,66 km/h | 00:53.433 | 196,27 km/h | 01:20.927 | 142,35 km/h |
| 4 | 302 | SONDERBAUER Roman | Opel Kadett C 16V | | | | |
| | | Lauf 1: 00:29.333 | 166,30 km/h | 00:54.691 | 196,91 km/h | 01:24.024 | 137,11 km/h |
| | | Lauf 2: 00:27.443 | 168,01 km/h | 00:54.140 | 196,65 km/h | 01:21.583 | 141,21 km/h |
| 5 | 313 | REICH Markus | VW Golf II 16V | | | | |
| | | Lauf 1: 00:29.693 | 156,49 km/h | 00:54.882 | 192,74 km/h | 01:24.575 | 136,21 km/h |
| | | Lauf 2: 00:28.031 | 171,02 km/h | 00:54.374 | 192,29 km/h | 01:22.405 | 139,80 km/h |
| 6 | 301 | WIEBE Björn | Renault Williams | | | | |
| | | Lauf 1: 00:31.648 | 163,01 km/h | 00:56.635 | 194,85 km/h | 01:28.283 | 130,49 km/h |
| | | Lauf 2: 00:28.921 | 171,62 km/h | 00:54.191 | 199,92 km/h | 01:23.112 | 138,61 km/h |
| 7 | 285 | HALBARTSCHLAGER Jürg | VW Golf | | | | |
| | | Lauf 1: 00:29.892 | 147,03 km/h | 00:56.709 | 182,39 km/h | 01:26.601 | 133,02 km/h |
| | | Lauf 2: 00:28.710 | 162,33 km/h | 00:55.222 | 184,74 km/h | 01:23.932 | 137,25 km/h |
| 8 | 273 | LAMPERT Christoph | VW Golf GTI 16 V | | | | |
| | | Lauf 1: 00:30.165 | 146,81 km/h | 00:57.311 | 186,61 km/h | 01:27.476 | 131,69 km/h |
| | | Lauf 2: 00:29.242 | 156,22 km/h | 00:55.408 | 189,89 km/h | 01:24.650 | 136,09 km/h |
| 9 | 268 | STERNAD Diethard | Alfa Romeo 156 STW | | | | |
| | | Lauf 1: 00:30.730 | 149,06 km/h | 00:57.517 | 193,37 km/h | 01:28.247 | 130,54 km/h |
| | | Lauf 2: 00:28.981 | 167,33 km/h | 00:55.791 | 194,06 km/h | 01:24.772 | 135,89 km/h |
| 10 | 284 | NEUMAYR Christopher | Ford IRS 16V | | | | |
| | | Lauf 1: 00:30.277 | 132,68 km/h | 00:57.642 | 182,89 km/h | 01:27.919 | 131,03 km/h |
| | | Lauf 2: 00:29.071 | 162,20 km/h | 00:56.585 | 182,72 km/h | 01:25.656 | 134,49 km/h |
| 11 | 312 | WIMMER Norbert | BMW 2002 8V | | | | |
| | | Lauf 1: 00:30.402 | 154,90 km/h | 00:57.447 | 176,04 km/h | 01:27.849 | 131,13 km/h |
| | | Lauf 2: 00:29.129 | 159,09 km/h | 00:56.553 | 178,53 km/h | 01:25.682 | 134,45 km/h |
| 12 | 271 | BLASL Hermann | Opel Kadett 16 V | | | | |
| | | Lauf 1: 00:29.679 | 142,95 km/h | 00:58.260 | 183,89 km/h | 01:27.939 | 131,00 km/h |
| | | Lauf 2: 00:28.879 | 148,56 km/h | 00:57.247 | 183,90 km/h | 01:26.126 | 133,76 km/h |



**Sektorzeiten & Speeds - Rennen - Gruppe E1 & H bis 2000 ccm**

| Rg. | Nr. | Sektor 1 | Speed Trap | Sektor 2 | Speed (Ziel) | Laufzeit | Speed (Lauf) |
|-----|-----|---------------------------|--------------------------|-----------|--------------|-----------|--------------|
| 13 | 274 | REITER Nicolas | Ford Escort MKI | | | | |
| | | Lauf 1: 00:30.757 | 137,56 km/h | 01:00.646 | 176,07 km/h | 01:31.403 | 126,04 km/h |
| | | Lauf 2: 00:28.504 | 159,68 km/h | 00:57.708 | 179,55 km/h | 01:26.212 | 133,62 km/h |
| 14 | 269 | ROIDER Franz | Ford Mondeo STW | | | | |
| | | Lauf 1: 00:30.998 | 149,75 km/h | 00:57.838 | 190,76 km/h | 01:28.836 | 129,68 km/h |
| | | Lauf 2: 00:29.641 | 162,35 km/h | 00:56.580 | 191,18 km/h | 01:26.221 | 133,61 km/h |
| 15 | 316 | SAAL Markus | Opel 16V | | | | |
| | | Lauf 1: 00:31.432 | 135,29 km/h | 00:59.611 | 179,13 km/h | 01:31.043 | 126,53 km/h |
| | | Lauf 2: 00:29.602 | 160,80 km/h | 00:56.787 | 186,16 km/h | 01:26.389 | 133,35 km/h |
| 16 | 332 | EHRLE Bernd | Opel Kadett | | | | |
| | | Lauf 1: 00:30.366 | 138,33 km/h | 00:58.319 | 174,19 km/h | 01:28.685 | 129,90 km/h |
| | | Lauf 2: 00:28.995 | 156,75 km/h | 00:57.666 | 174,37 km/h | 01:26.661 | 132,93 km/h |
| 17 | 338 | TERLER Walter | Opel Kadett C Krause | | | | |
| | | Lauf 1: 00:31.145 | 151,84 km/h | 00:58.501 | 175,64 km/h | 01:29.646 | 128,51 km/h |
| | | Lauf 2: 00:29.867 | 157,30 km/h | 00:56.951 | 174,79 km/h | 01:26.818 | 132,69 km/h |
| 18 | 279 | EDER Roland | VW Scirocco | | | | |
| | | Lauf 1: 00:31.409 | 148,12 km/h | 00:59.972 | 177,99 km/h | 01:31.381 | 126,06 km/h |
| | | Lauf 2: 00:29.435 | 158,68 km/h | 00:57.870 | 178,71 km/h | 01:27.305 | 131,95 km/h |
| 19 | 320 | WIEBE André | Renault Williams | | | | |
| | | Lauf 1: 00:31.683 | 146,89 km/h | 01:00.328 | 155,15 km/h | 01:32.011 | 125,20 km/h |
| | | Lauf 2: 00:29.791 | 162,00 km/h | 00:57.825 | 189,23 km/h | 01:27.616 | 131,48 km/h |
| 20 | 277 | EMSENHUBER Michael | VW Corrado 16V | | | | |
| | | Lauf 1: 00:30.891 | 132,97 km/h | 00:59.688 | 189,15 km/h | 01:30.579 | 127,18 km/h |
| | | Lauf 2: 00:29.955 | 155,66 km/h | 00:58.046 | 189,81 km/h | 01:28.001 | 130,91 km/h |
| 21 | 266 | MARTINEK Rene | Honda Civic Type R | | | | |
| | | Lauf 1: 00:32.880 | 135,13 km/h | 01:01.063 | 177,01 km/h | 01:33.943 | 122,63 km/h |
| | | Lauf 2: 00:30.329 | 157,53 km/h | 00:58.438 | 181,29 km/h | 01:28.767 | 129,78 km/h |
| 22 | 317 | BODENMÜLLER Edmund | Opel Kadett C Coupé | | | | |
| | | Lauf 1: 00:33.105 | 144,63 km/h | 01:01.120 | 175,90 km/h | 01:34.225 | 122,26 km/h |
| | | Lauf 2: 00:30.098 | 154,65 km/h | 00:59.147 | 172,85 km/h | 01:29.245 | 129,08 km/h |
| 23 | 270 | ENDRESS Michael | Audi 80 Coupé | | | | |
| | | Lauf 1: 00:32.051 | 146,55 km/h | 01:02.114 | 171,27 km/h | 01:34.165 | 122,34 km/h |
| | | Lauf 2: 00:30.701 | 156,67 km/h | 00:59.067 | 181,34 km/h | 01:29.768 | 128,33 km/h |
| 24 | 304 | FLIK Thomas | Renault Clio Williams | | | | |
| | | Lauf 1: 00:32.130 | 134,65 km/h | 00:59.809 | 182,02 km/h | 01:31.939 | 125,30 km/h |
| | | Lauf 2: 00:31.071 | 148,96 km/h | 00:59.067 | 180,15 km/h | 01:30.138 | 127,80 km/h |
| 25 | 333 | CHRISTALL Roland | Opel Ascona B 8V | | | | |
| | | Lauf 1: 00:32.529 | 141,14 km/h | 01:01.277 | 173,47 km/h | 01:33.806 | 122,81 km/h |
| | | Lauf 2: 00:30.643 | 151,78 km/h | 01:00.378 | 174,45 km/h | 01:31.021 | 126,57 km/h |
| 26 | 280 | DATZREITER Stefan | Seat Ibiza Kit Car | | | | |
| | | Lauf 1: 00:32.506 | 128,03 km/h | 01:02.493 | 167,44 km/h | 01:34.999 | 121,26 km/h |
| | | Lauf 2: 00:30.664 | 138,63 km/h | 01:01.319 | 175,36 km/h | 01:31.983 | 125,24 km/h |
| 27 | 306 | FLIK Beatrice | Renault Megane Cup | | | | |
| | | Lauf 1: 00:32.452 | 140,15 km/h | 01:02.617 | 177,14 km/h | 01:35.069 | 121,17 km/h |
| | | Lauf 2: 00:30.921 | 147,48 km/h | 01:01.785 | 174,76 km/h | 01:32.706 | 124,26 km/h |
| 28 | 314 | WEISS Werner | Ford Escort Zakspeed BDA | | | | |
| | | Lauf 1: 00:33.436 | 134,69 km/h | 01:03.083 | 173,17 km/h | 01:36.519 | 119,36 km/h |
| | | Lauf 2: 00:31.980 | 149,41 km/h | 01:01.324 | 175,54 km/h | 01:33.304 | 123,47 km/h |



**Sektorzeiten & Speeds - Rennen - Gruppe E1 & H bis 2000 ccm**

| Rg. | Nr. | Sektor 1 | Speed Trap | Sektor 2 | Speed (Ziel) | Laufzeit | Speed (Lauf) |
|-----|-----|----------------------------|------------------|-----------|--------------|-----------|--------------|
| 29 | 281 | JUD Werner | VW Golf II | | | | |
| | | Lauf 1: 00:33.266 | 123,17 km/h | 01:05.213 | 163,13 km/h | 01:38.479 | 116,98 km/h |
| | | Lauf 2: 00:32.210 | 132,06 km/h | 01:02.771 | 167,17 km/h | 01:34.981 | 121,29 km/h |
| 30 | 331 | DÜMLER Thomas | VW Golf II | | | | |
| | | Lauf 1: 00:35.827 | 107,15 km/h | 01:07.482 | 128,49 km/h | 01:43.309 | 111,51 km/h |
| | | Lauf 2: 00:32.357 | 133,48 km/h | 01:03.192 | 160,63 km/h | 01:35.549 | 120,57 km/h |
| 31 | 322 | GREPPMEIER Andreas | Opel Kadett C | | | | |
| | | Lauf 1: 00:35.021 | 120,54 km/h | 01:06.410 | 148,95 km/h | 01:41.431 | 113,57 km/h |
| | | Lauf 2: 00:32.508 | 140,41 km/h | 01:03.118 | 156,02 km/h | 01:35.626 | 120,47 km/h |
| 32 | 288 | GRÜNIG Stefan | VW Golf 8V | | | | |
| | | Lauf 1: 00:34.238 | 137,04 km/h | 01:03.993 | 165,15 km/h | 01:38.231 | 117,28 km/h |
| | | Lauf 2: 00:32.636 | 146,41 km/h | 01:03.448 | 166,07 km/h | 01:36.084 | 119,90 km/h |
| 33 | 287 | BODENMÜLLER Michael | Renault Clio Cup | | | | |
| | | Lauf 1: 00:33.724 | 130,03 km/h | 01:03.992 | 158,05 km/h | 01:37.716 | 117,89 km/h |
| | | Lauf 2: 00:31.470 | 144,34 km/h | * | * km/h | A | * km/h |
| 34 | 282 | DAURER Harald | VW Golf I 16V | | | | |
| | | Lauf 1: 00:34.155 | 132,58 km/h | 01:06.105 | 150,18 km/h | 01:40.260 | 114,90 km/h |
| | | Lauf 2: 00:33.697 | 137,91 km/h | 01:05.749 | 154,57 km/h | 01:39.446 | 115,84 km/h |
| 35 | 289 | VEIT Kevin | BMW E30 320 is | | | | |
| | | Lauf 1: 00:35.374 | 130,64 km/h | 01:07.573 | 151,94 km/h | 01:42.947 | 111,90 km/h |
| | | Lauf 2: 00:33.361 | 134,50 km/h | 01:06.434 | 150,20 km/h | 01:39.795 | 115,44 km/h |
| 36 | 276 | PABST Johannes | Opel Kadett D | | | | |
| | | Lauf 1: 00:35.154 | 104,51 km/h | 01:09.526 | 145,99 km/h | 01:44.680 | 110,05 km/h |
| | | Lauf 2: 00:33.144 | 116,09 km/h | 01:07.396 | 156,63 km/h | 01:40.540 | 114,58 km/h |
| 37 | 283 | HAIDER Franz | VW Golf I | | | | |
| | | Lauf 1: 00:37.301 | 120,45 km/h | 01:08.643 | 156,46 km/h | 01:45.944 | 108,74 km/h |
| | | Lauf 2: 00:35.166 | 126,63 km/h | 01:06.294 | 158,38 km/h | 01:41.460 | 113,54 km/h |
| 38 | 291 | ALTMANN Dieter jun. | Peugeot 405 | | | | |
| | | Lauf 1: 00:36.292 | 122,92 km/h | 01:09.968 | 164,56 km/h | 01:46.260 | 108,41 km/h |
| | | Lauf 2: 00:34.721 | 114,93 km/h | 01:07.141 | 155,01 km/h | 01:41.862 | 113,09 km/h |

