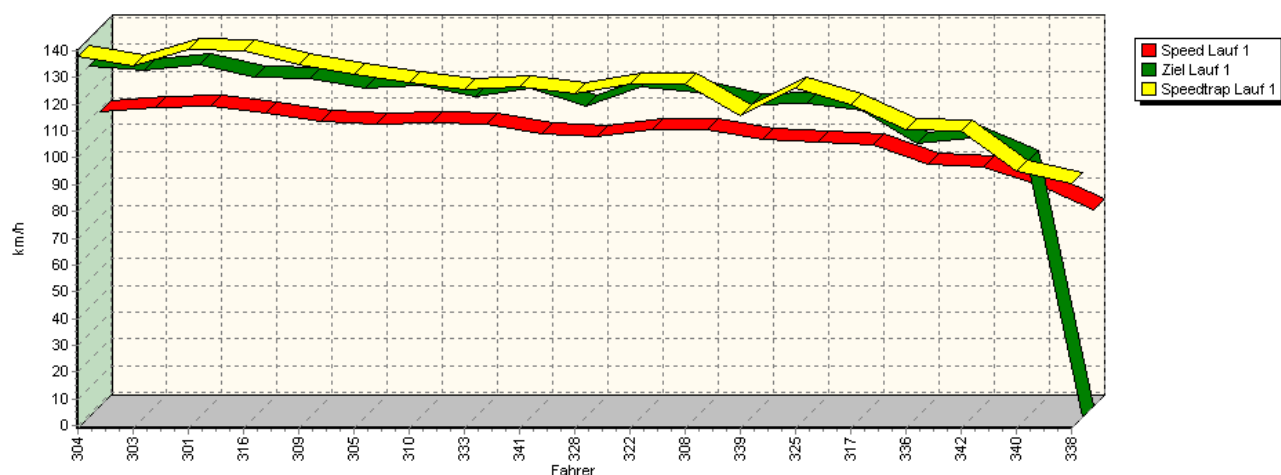
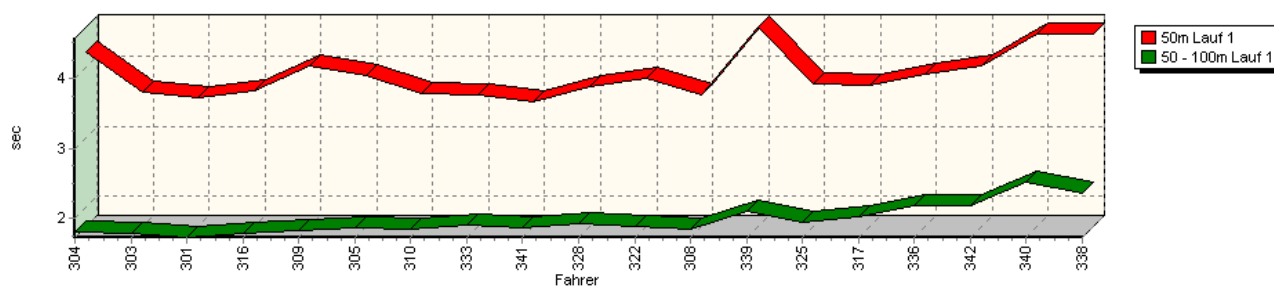


Sektorzeiten & Speeds - Training - Gruppe H (DMSB) bis 1600 ccm und bis 2000 ccm - Klasse

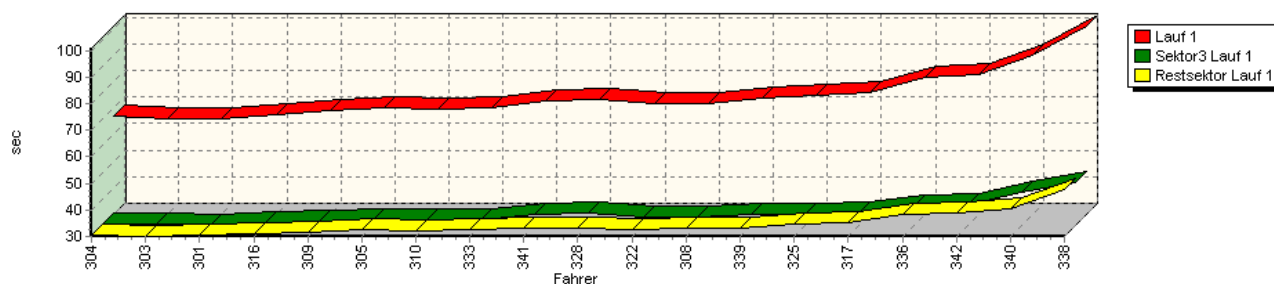
Speed-Diagramm Lauf 1



Sektor-Diagramm (Start) Lauf 1

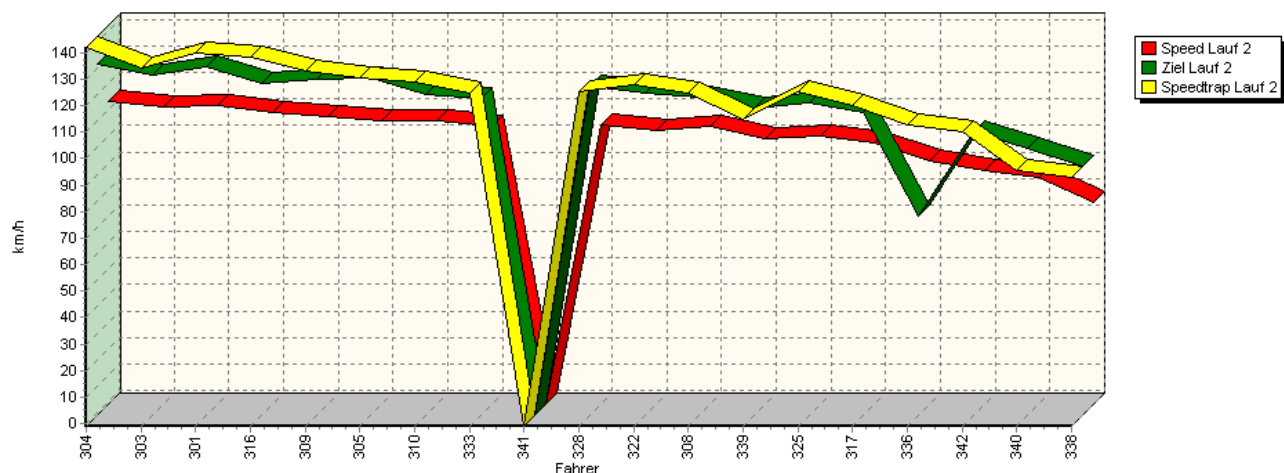


Sektor-Diagramm (Rest) Lauf 1

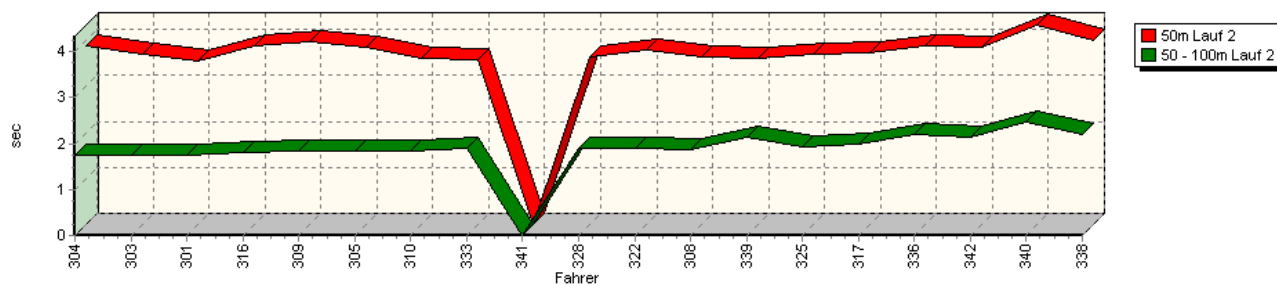


Sektorzeiten & Speeds - Training - Gruppe H (DMSB) bis 1600 ccm und bis 2000 ccm - Klasse

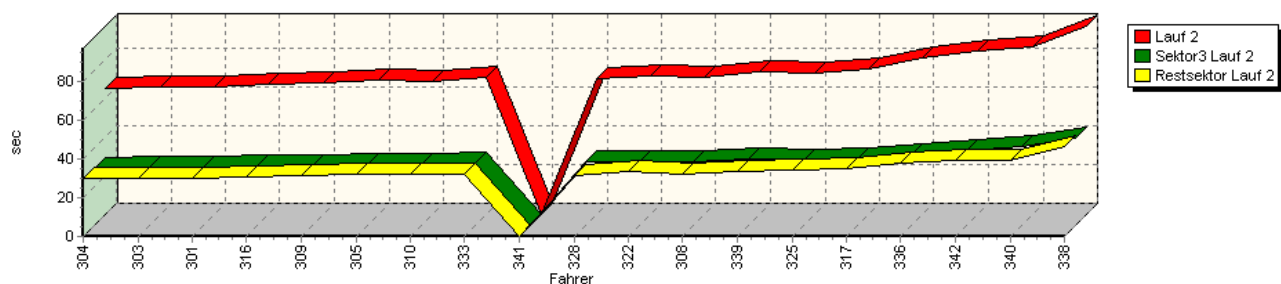
Speed-Diagramm Lauf 2



Sektor-Diagramm (Start) Lauf 2

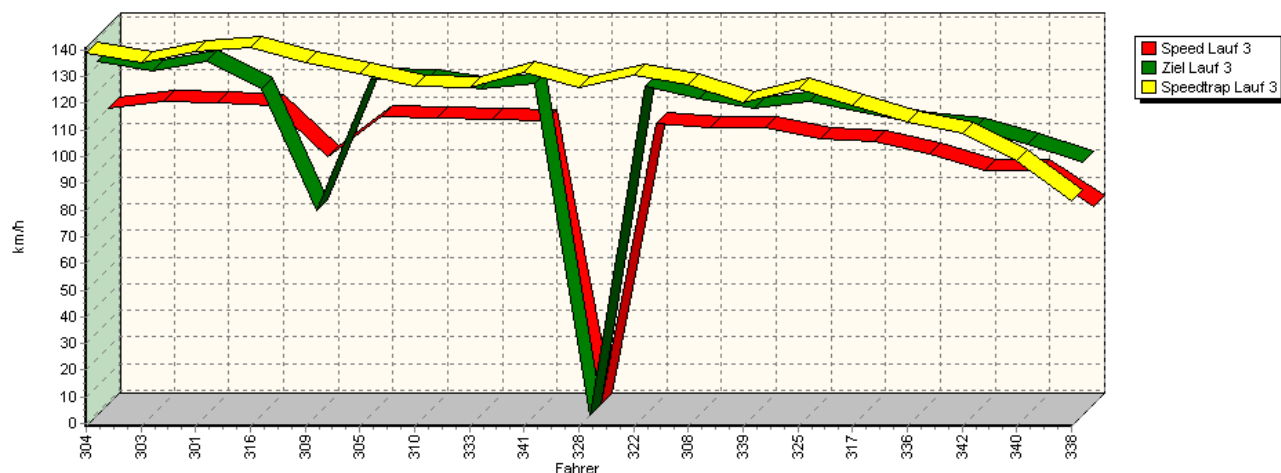


Sektor-Diagramm (Rest) Lauf 2

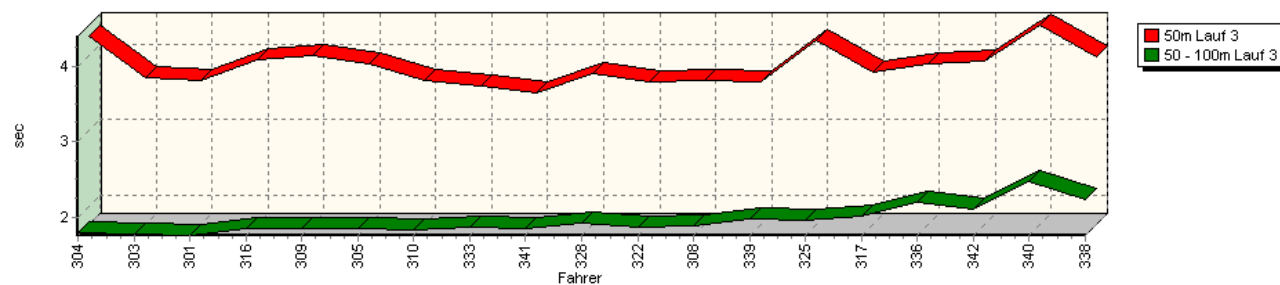


Sektorzeiten & Speeds - Training - Gruppe H (DMSB) bis 1600 ccm und bis 2000 ccm - Klasse

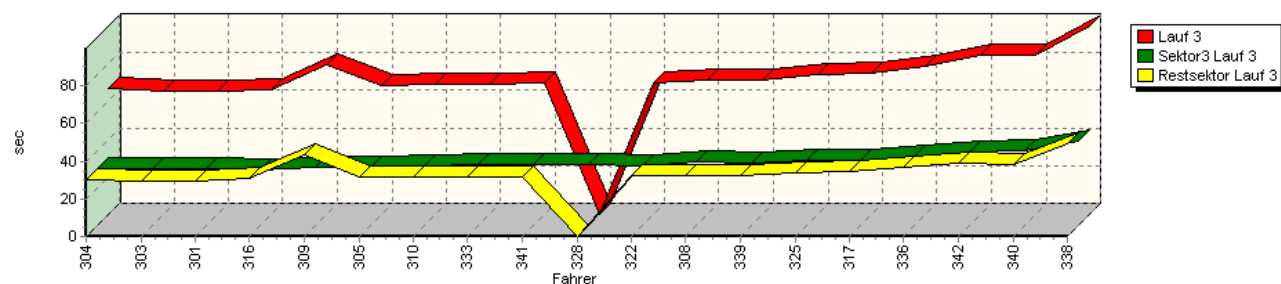
Speed-Diagramm Lauf 3



Sektor-Diagramm (Start) Lauf 3



Sektor-Diagramm (Rest) Lauf 3



| Rg. | Nr. | Sektor 1 (50m) | Sektor 2 (50-100m) | Sektor 3 | Speed Trap | Sektor 4 | Speed (Ziel) | Laufzeit | Speed (Lauf) |
|-----|-----|---|--------------------|-----------|-------------|-----------|--------------|-----------|--------------|
| 1 | 304 | ROTTENBERGER Dieter BMW E36 318 is STW | | | | | | | |
| | | Lauf 1: 00:04.216 | 00:01.809 | 00:30.253 | 137,86 km/h | 00:30.625 | 130,07 km/h | 01:06.903 | 109,23 km/h |
| | | Lauf 2: 00:03.879 | 00:01.760 | 00:29.136 | 141,99 km/h | 00:29.800 | 131,65 km/h | 01:04.575 | 113,17 km/h |
| | | Lauf 3: 00:04.255 | 00:01.793 | 00:30.342 | 138,78 km/h | 00:30.217 | 131,70 km/h | 01:06.607 | 109,72 km/h |

Sektorzeiten & Speeds - Training - Gruppe H (DMSB) bis 1600 ccm und bis 2000 ccm - Klasse

| Rg. | Nr. | | Sektor 1 (50m) | Sektor 2 (50-100m) | Sektor 3 | Speed Trap | Sektor 4 | Speed (Ziel) | Laufzeit | Speed (Lauf) |
|-----|-----|--------------------------|----------------|----------------------------|-----------|-------------|-----------|--------------|-----------|--------------|
| 2 | 303 | ORTH Patrick | | BMW E30 320 is | | | | | | |
| | | Lauf 1: | 00:03.647 | 00:01.792 | 00:30.615 | 134,18 km/h | 00:29.984 | 128,60 km/h | 01:06.038 | 110,66 km/h |
| | | Lauf 2: | 00:03.708 | 00:01.760 | 00:30.131 | 133,91 km/h | 00:29.997 | 127,63 km/h | 01:05.596 | 111,41 km/h |
| | | Lauf 3: | 00:03.705 | 00:01.780 | 00:29.864 | 134,94 km/h | 00:29.707 | 128,11 km/h | 01:05.056 | 112,33 km/h |
| 3 | 301 | SONDERBAUER Roman | | Opel Kadett C Coupé 16V | | | | | | |
| | | Lauf 1: | 00:03.566 | 00:01.725 | 00:30.070 | 140,50 km/h | 00:30.351 | 130,71 km/h | 01:05.712 | 111,21 km/h |
| | | Lauf 2: | 00:03.561 | 00:01.734 | 00:30.055 | 140,08 km/h | 00:29.910 | 130,51 km/h | 01:05.260 | 111,98 km/h |
| | | Lauf 3: | 00:03.672 | 00:01.754 | 00:30.231 | 139,25 km/h | 00:29.701 | 131,49 km/h | 01:05.358 | 111,82 km/h |
| 4 | 316 | WIEBE André | | Renault Williams Laguna | | | | | | |
| | | Lauf 1: | 00:03.667 | 00:01.779 | 00:31.075 | 139,83 km/h | 00:30.802 | 126,21 km/h | 01:07.323 | 108,55 km/h |
| | | Lauf 2: | 00:03.890 | 00:01.805 | 00:30.381 | 138,48 km/h | 00:30.929 | 124,25 km/h | 01:07.005 | 109,07 km/h |
| | | Lauf 3: | 00:03.941 | 00:01.846 | 00:29.629 | 140,88 km/h | 00:30.487 | 121,05 km/h | 01:05.903 | 110,89 km/h |
| 5 | 309 | BRÜGGE Frank | | VW Brügge Golf II 16V | | | | | | |
| | | Lauf 1: | 00:04.026 | 00:01.825 | 00:31.592 | 134,63 km/h | 00:31.777 | 125,78 km/h | 01:09.220 | 105,58 km/h |
| | | Lauf 2: | 00:03.968 | 00:01.845 | 00:30.737 | 133,06 km/h | 00:31.364 | 125,71 km/h | 01:07.914 | 107,61 km/h |
| | | Lauf 3: | 00:03.992 | 00:01.852 | 00:30.715 | 135,11 km/h | 00:43.078 | 75,68 km/h | 01:19.637 | 91,77 km/h |
| 6 | 305 | FLIK Thomas | | Renault Clio Williams | | | | | | |
| | | Lauf 1: | 00:03.888 | 00:01.859 | 00:31.923 | 131,18 km/h | 00:32.345 | 121,90 km/h | 01:10.015 | 104,38 km/h |
| | | Lauf 2: | 00:03.859 | 00:01.832 | 00:31.176 | 130,43 km/h | 00:31.986 | 126,20 km/h | 01:08.853 | 106,14 km/h |
| | | Lauf 3: | 00:03.889 | 00:01.849 | 00:30.917 | 131,22 km/h | 00:31.764 | 124,59 km/h | 01:08.419 | 106,81 km/h |
| 7 | 310 | WEBER Jens | | Opel Kadett C 16V | | | | | | |
| | | Lauf 1: | 00:03.632 | 00:01.840 | 00:31.992 | 128,18 km/h | 00:32.123 | 122,81 km/h | 01:09.587 | 105,02 km/h |
| | | Lauf 2: | 00:03.607 | 00:01.823 | 00:31.228 | 128,80 km/h | 00:32.134 | 120,06 km/h | 01:08.792 | 106,23 km/h |
| | | Lauf 3: | 00:03.664 | 00:01.824 | 00:31.404 | 126,20 km/h | 00:31.854 | 124,06 km/h | 01:08.746 | 106,30 km/h |
| 8 | 333 | HATEZIC Johann | | Opel Ascona B Frank 8V | | | | | | |
| | | Lauf 1: | 00:03.612 | 00:01.897 | 00:32.255 | 125,77 km/h | 00:32.402 | 118,75 km/h | 01:10.166 | 104,15 km/h |
| | | Lauf 2: | 00:03.597 | 00:01.890 | 00:32.307 | 124,68 km/h | 00:32.441 | 118,32 km/h | 01:10.235 | 104,05 km/h |
| | | Lauf 3: | 00:03.587 | 00:01.864 | 00:32.060 | 125,97 km/h | 00:31.661 | 121,29 km/h | 01:09.172 | 105,65 km/h |
| 9 | 341 | NÖLLING Harald | | Opel Kadett C 16V | | | | | | |
| | | Lauf 1: | 00:03.513 | 00:01.860 | 00:34.075 | 126,58 km/h | 00:33.123 | 121,88 km/h | 01:12.571 | 100,70 km/h |
| | | Lauf 2: | * | * | * | * km/h | * | * km/h | * | * km/h |
| | | Lauf 3: | 00:03.496 | 00:01.843 | 00:32.451 | 131,75 km/h | 00:31.721 | 123,04 km/h | 01:09.511 | 105,13 km/h |
| 10 | 328 | GÜRTZGEN Tim | | BWM 2002 tii | | | | | | |
| | | Lauf 1: | 00:03.723 | 00:01.917 | 00:34.516 | 124,01 km/h | 00:33.215 | 115,39 km/h | 01:13.371 | 99,60 km/h |
| | | Lauf 2: | 00:03.649 | 00:01.900 | 00:32.652 | 125,22 km/h | 00:31.724 | 123,10 km/h | 01:09.925 | 104,51 km/h |
| | | Lauf 3: | 00:03.746 | 00:01.912 | 00:32.453 | 125,93 km/h | * | * km/h | A | * km/h |
| 11 | 322 | FLIK Beatrice | | Renault Megane Cup | | | | | | |
| | | Lauf 1: | 00:03.846 | 00:01.887 | 00:32.997 | 127,47 km/h | 00:32.838 | 122,56 km/h | 01:11.568 | 102,11 km/h |
| | | Lauf 2: | 00:03.779 | 00:01.909 | 00:32.609 | 127,75 km/h | 00:33.214 | 120,76 km/h | 01:11.511 | 102,19 km/h |
| | | Lauf 3: | 00:03.639 | 00:01.860 | 00:31.938 | 130,47 km/h | 00:32.595 | 122,31 km/h | 01:10.032 | 104,35 km/h |
| 12 | 308 | LANG Bernhard | | Ford Escort RS2000 Spezial | | | | | | |
| | | Lauf 1: | 00:03.619 | 00:01.846 | 00:33.126 | 127,43 km/h | 00:32.876 | 120,31 km/h | 01:11.467 | 102,26 km/h |
| | | Lauf 2: | 00:03.633 | 00:01.858 | 00:32.861 | 124,74 km/h | 00:32.022 | 119,18 km/h | 01:10.374 | 103,84 km/h |
| | | Lauf 3: | 00:03.654 | 00:01.880 | 00:33.590 | 126,80 km/h | 00:32.074 | 117,38 km/h | 01:11.198 | 102,64 km/h |
| 13 | 339 | DE WEST Wilko | | Opel Kadett C Coupé | | | | | | |
| | | Lauf 1: | 00:04.581 | 00:02.102 | 00:34.056 | 115,80 km/h | 00:33.176 | 115,74 km/h | 01:13.915 | 98,87 km/h |
| | | Lauf 2: | 00:03.601 | 00:02.129 | 00:34.134 | 114,68 km/h | 00:33.627 | 114,85 km/h | 01:13.491 | 99,44 km/h |
| | | Lauf 3: | 00:03.641 | 00:01.975 | 00:33.330 | 120,30 km/h | 00:32.233 | 113,81 km/h | 01:11.179 | 102,67 km/h |

Sektorzeiten & Speeds - Training - Gruppe H (DMSB) bis 1600 ccm und bis 2000 ccm - Klasse

| Rg. | Nr. | | Sektor 1 (50m) | Sektor 2 (50-100m) | Sektor 3 | Speed Trap | Sektor 4 | Speed (Ziel) | Laufzeit | Speed (Lauf) |
|-----|-----|--------------------------|----------------|------------------------|-----------|-------------|-----------|--------------|-----------|--------------|
| 14 | 325 | KONSTANZER Alex | | Opel Kadett C Coupé 8V | | | | | | |
| | | Lauf 1: | 00:03.777 | 00:01.939 | 00:34.294 | 126,10 km/h | 00:34.708 | 116,05 km/h | 01:14.718 | 97,81 km/h |
| | | Lauf 2: | 00:03.696 | 00:01.919 | 00:33.410 | 125,40 km/h | 00:33.932 | 116,81 km/h | 01:12.957 | 100,17 km/h |
| | | Lauf 3: | 00:04.194 | 00:01.962 | 00:34.418 | 125,13 km/h | 00:33.846 | 116,54 km/h | 01:14.420 | 98,20 km/h |
| 15 | 317 | SCHWANECKE Gero | | VW Golf I GTI 16 V | | | | | | |
| | | Lauf 1: | 00:03.745 | 00:02.018 | 00:34.712 | 119,66 km/h | 00:35.317 | 113,73 km/h | 01:15.792 | 96,42 km/h |
| | | Lauf 2: | 00:03.742 | 00:01.987 | 00:34.321 | 120,21 km/h | 00:34.699 | 113,49 km/h | 01:14.749 | 97,77 km/h |
| | | Lauf 3: | 00:03.772 | 00:02.015 | 00:34.715 | 119,31 km/h | 00:34.618 | 112,51 km/h | 01:15.120 | 97,29 km/h |
| 16 | 336 | ALT Holger | | Ford Escort RS2000 16V | | | | | | |
| | | Lauf 1: | 00:03.911 | 00:02.184 | 00:37.241 | 110,60 km/h | 00:38.221 | 101,32 km/h | 01:21.557 | 89,61 km/h |
| | | Lauf 2: | 00:03.885 | 00:02.184 | 00:36.651 | 112,67 km/h | 00:37.679 | 74,25 km/h | 01:20.399 | 90,90 km/h |
| | | Lauf 3: | 00:03.887 | 00:02.195 | 00:36.436 | 112,89 km/h | 00:36.426 | 108,29 km/h | 01:18.944 | 92,57 km/h |
| 17 | 342 | RUWE Mario | | BMW 318 is | | | | | | |
| | | Lauf 1: | 00:04.018 | 00:02.179 | 00:37.982 | 110,20 km/h | 00:38.664 | 103,30 km/h | 01:22.843 | 88,21 km/h |
| | | Lauf 2: | 00:03.862 | 00:02.130 | 00:38.473 | 110,41 km/h | 00:39.484 | 105,95 km/h | 01:23.949 | 87,05 km/h |
| | | Lauf 3: | 00:03.923 | 00:02.099 | 00:39.133 | 108,56 km/h | 00:39.109 | 106,24 km/h | 01:24.264 | 86,73 km/h |
| 18 | 340 | WECKENBROCK Heiko | | BMW Compact 318 ti | | | | | | |
| | | Lauf 1: | 00:04.489 | 00:02.519 | 00:42.415 | 94,96 km/h | 00:40.308 | 94,55 km/h | 01:29.731 | 81,44 km/h |
| | | Lauf 2: | 00:04.335 | 00:02.476 | 00:40.578 | 95,54 km/h | 00:39.188 | 99,94 km/h | 01:26.577 | 84,41 km/h |
| | | Lauf 3: | 00:04.397 | 00:02.464 | 00:39.407 | 98,66 km/h | 00:38.353 | 100,25 km/h | 01:24.621 | 86,36 km/h |
| 19 | 338 | MANGER Joachim | | Opel Kadett C | | | | | | |
| | | Lauf 1: | 00:04.485 | 00:02.363 | 00:46.231 | 90,31 km/h | 00:47.835 | * km/h | 01:40.914 | 72,42 km/h |
| | | Lauf 2: | 00:04.011 | 00:02.190 | 00:44.717 | 93,11 km/h | 00:46.051 | 92,91 km/h | 01:36.969 | 75,36 km/h |
| | | Lauf 3: | 00:03.983 | 00:02.238 | 00:44.558 | 83,17 km/h | 00:49.123 | 94,01 km/h | 01:39.902 | 73,15 km/h |