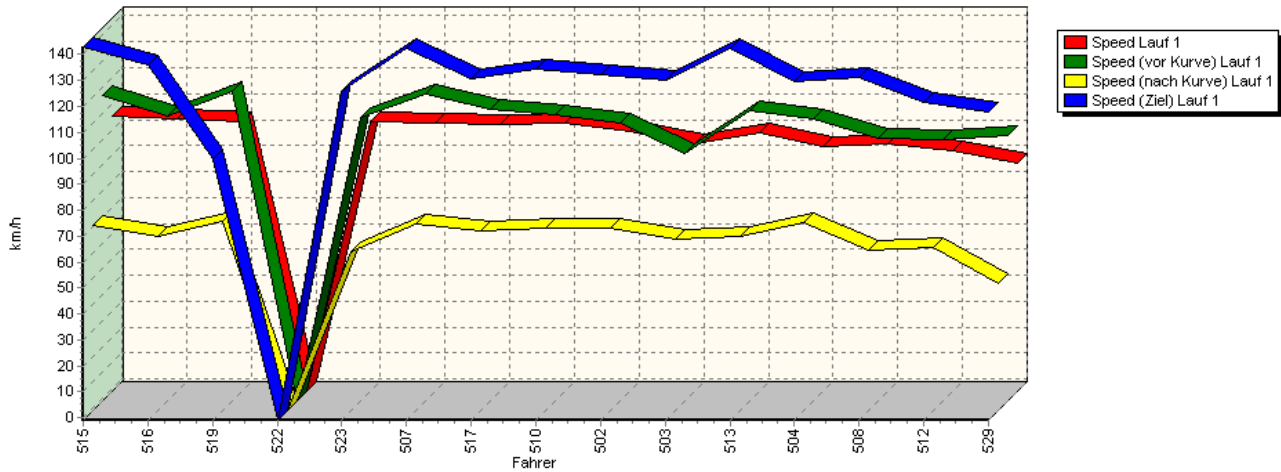
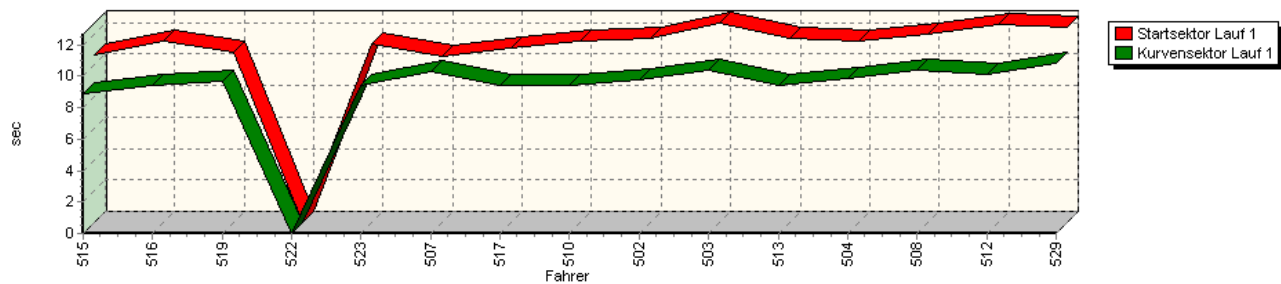


Sektorzeiten & Speeds - NSU Bergpokal - Klasse 1

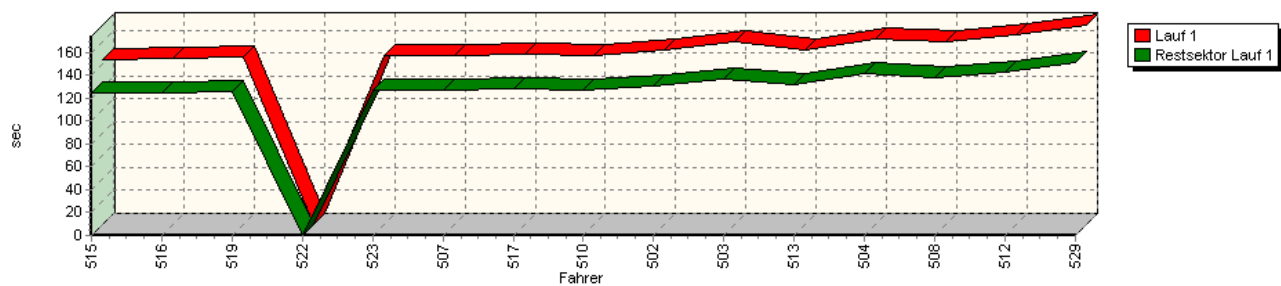
Speed-Diagramm Lauf 1



Sektor-Diagramm (Start) Lauf 1

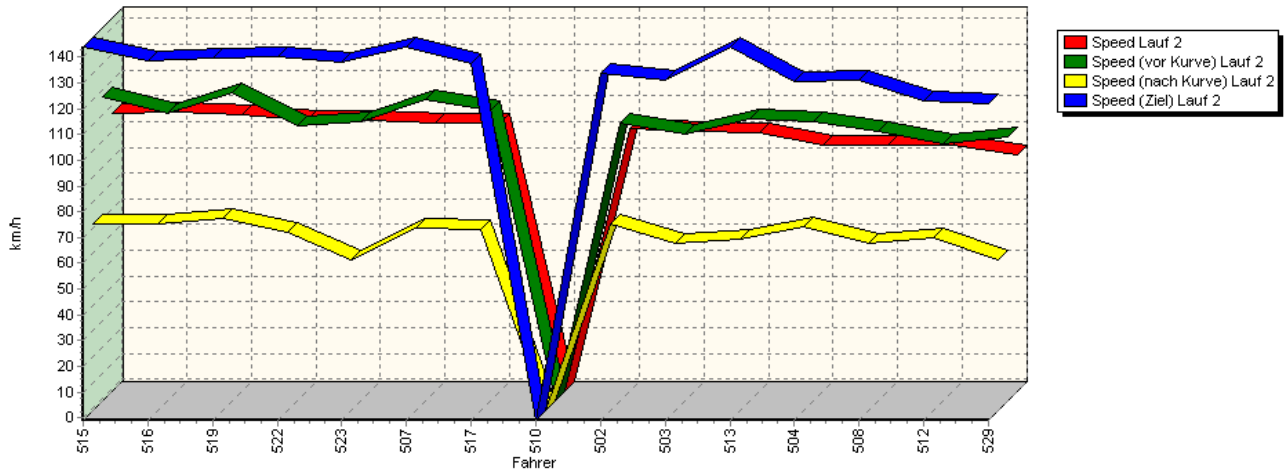


Sektor-Diagramm (Rest) Lauf 1

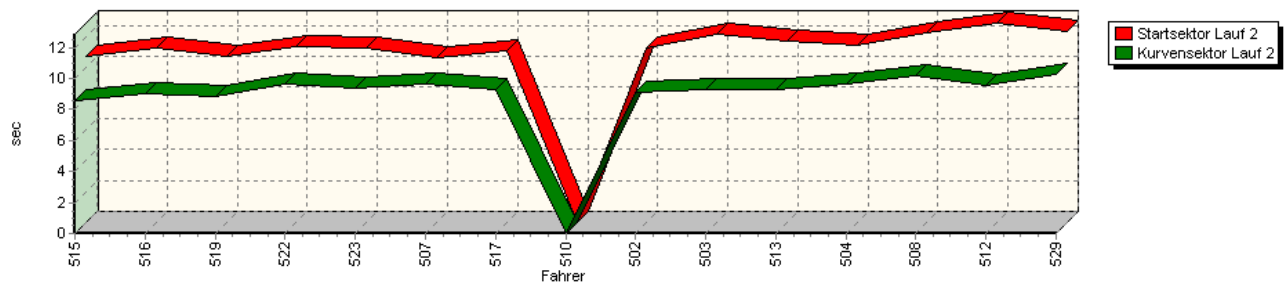


Sektorzeiten & Speeds - NSU Bergpokal - Klasse 1

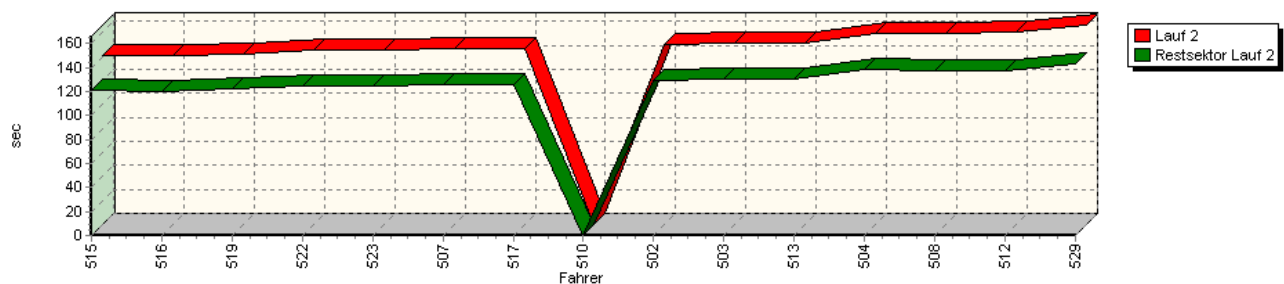
Speed-Diagramm Lauf 2



Sektor-Diagramm (Start) Lauf 2

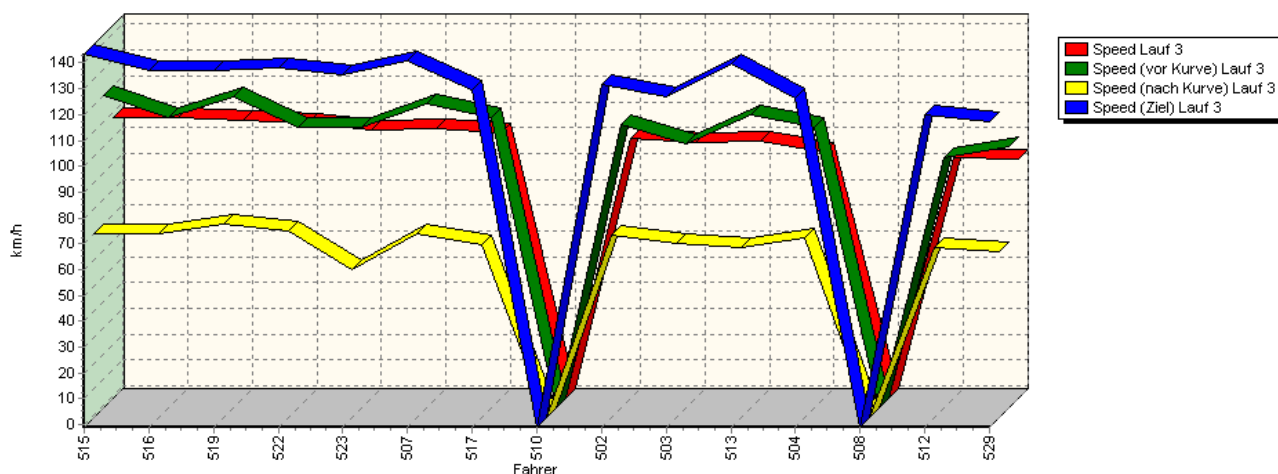


Sektor-Diagramm (Rest) Lauf 2

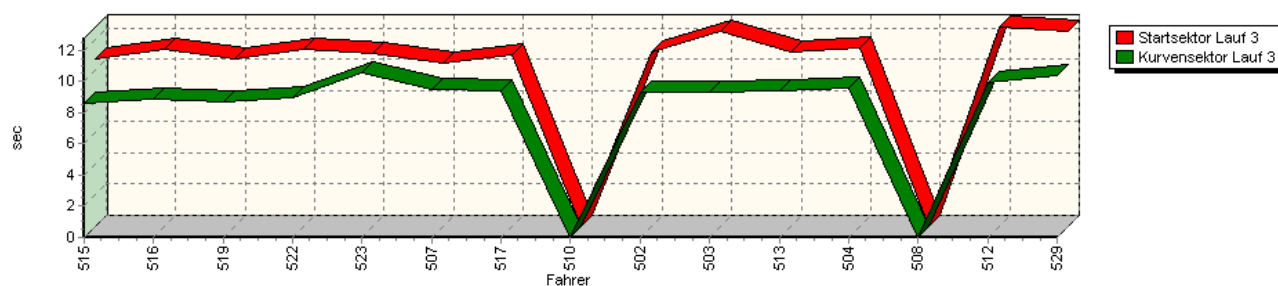


Sektorzeiten & Speeds - NSU Bergpokal - Klasse 1

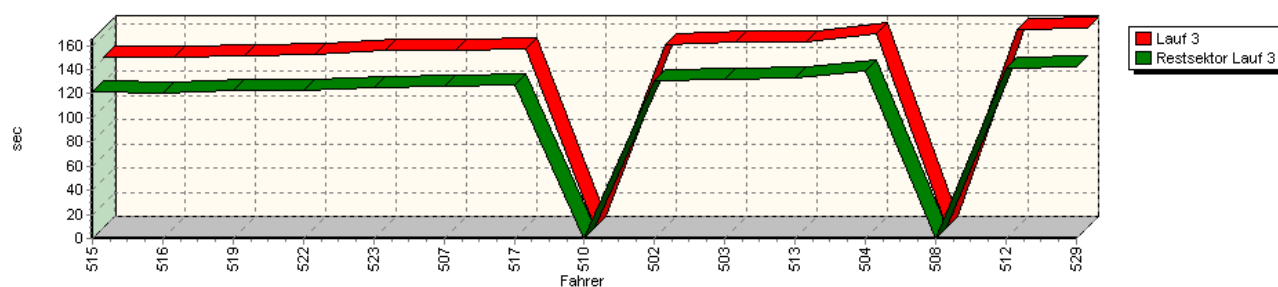
Speed-Diagramm Lauf 3



Sektor-Diagramm (Start) Lauf 3



Sektor-Diagramm (Rest) Lauf 3



Rg.	Nr.	Startsektor	Speed vor Kurve	90°-Kurve	Speed n. K.	Restsektor	Speed Ziel	Laufzeit	Speed (Lauf)	
1	515	SCHINDLER Uwe	NSU TT							
		Lauf 1:	00:10.660	116,88 km/h	00:08.906	70,28 km/h	02:04.112	142,92 km/h	02:23.678	105,24 km/h
		Lauf 2:	00:10.709	116,94 km/h	00:08.590	71,67 km/h	02:01.785	143,90 km/h	02:21.084	107,17 km/h
		Lauf 3:	00:10.723	120,14 km/h	00:08.586	70,29 km/h	02:01.354	143,45 km/h	02:20.663	107,49 km/h



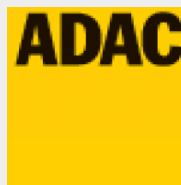
44. ADAC/MSR-Rhön Hauenstein-Bergrennen

16. bis 18. August 2013

Deutsche Bergmeisterschaft / DMSB Bergpokal

KW Gruppe H Berg-Cup / NSU Berg Pokal 2013

GLPberg Meisterschaft 2013



Sektorzeiten & Speeds - NSU Bergpokal - Klasse 1

Rg.	Nr.	Startsektor	Speed vor Kurve	90°-Kurve	Speed n. K.	Restsektor	Speed Ziel	Laufzeit	Speed (Lauf)	
2	516	HÖBER Jörg	NSU TT							
		Lauf 1:	00:11.523	108,78 km/h	00:09.367	66,39 km/h	02:04.470	135,74 km/h	02:25.360	104,02 km/h
		Lauf 2:	00:11.250	110,80 km/h	00:09.047	71,35 km/h	02:00.551	138,87 km/h	02:20.848	107,35 km/h
		Lauf 3:	00:11.319	111,26 km/h	00:08.864	69,95 km/h	02:00.605	136,91 km/h	02:20.788	107,40 km/h
3	519	DAVIDOVIC Jörg	NSU TT							
		Lauf 1:	00:10.794	118,16 km/h	00:09.641	71,92 km/h	02:06.100	99,97 km/h	02:26.535	103,18 km/h
		Lauf 2:	00:10.739	118,75 km/h	00:08.806	73,84 km/h	02:02.667	139,53 km/h	02:22.212	106,32 km/h
		Lauf 3:	00:10.711	119,26 km/h	00:08.708	73,66 km/h	02:02.544	136,77 km/h	02:21.963	106,51 km/h
4	522	KRYSTOFIAK Thomas	NSU TT							
		Lauf 1:	*	* km/h	*	* km/h	*	* km/h	*	* km/h
		Lauf 2:	00:11.340	105,96 km/h	00:09.611	68,08 km/h	02:04.196	140,12 km/h	02:25.147	104,17 km/h
		Lauf 3:	00:11.371	107,72 km/h	00:08.973	71,21 km/h	02:02.660	137,97 km/h	02:23.004	105,73 km/h
5	523	KLEINEBERG Frank	NSU TT							
		Lauf 1:	00:11.304	108,26 km/h	00:09.410	60,20 km/h	02:06.297	126,05 km/h	02:27.011	102,85 km/h
		Lauf 2:	00:11.244	107,31 km/h	00:09.351	57,44 km/h	02:04.632	138,32 km/h	02:25.227	104,11 km/h
		Lauf 3:	00:11.097	107,57 km/h	00:10.573	56,38 km/h	02:05.517	135,60 km/h	02:27.187	102,73 km/h
6	507	FLEISCHER Horst	NSU TT							
		Lauf 1:	00:10.518	117,46 km/h	00:10.264	70,78 km/h	02:06.517	142,16 km/h	02:27.299	102,65 km/h
		Lauf 2:	00:10.602	115,83 km/h	00:09.689	70,02 km/h	02:05.984	143,98 km/h	02:26.275	103,37 km/h
		Lauf 3:	00:10.465	116,76 km/h	00:09.506	70,06 km/h	02:06.550	140,77 km/h	02:26.521	103,19 km/h
7	517	VOGEL Michael	NSU TT							
		Lauf 1:	00:11.104	111,33 km/h	00:09.411	68,22 km/h	02:08.286	130,92 km/h	02:28.801	101,61 km/h
		Lauf 2:	00:11.053	111,75 km/h	00:09.282	69,37 km/h	02:06.296	137,63 km/h	02:26.631	103,12 km/h
		Lauf 3:	00:10.973	111,46 km/h	00:09.351	66,02 km/h	02:08.026	129,60 km/h	02:28.350	101,92 km/h
8	510	HOFMANN Steffen	NSU TT							
		Lauf 1:	00:11.513	109,53 km/h	00:09.405	69,52 km/h	02:06.930	134,14 km/h	02:27.848	102,27 km/h
		Lauf 2:	*	* km/h	*	* km/h	*	* km/h	*	* km/h
		Lauf 3:	*	* km/h	*	* km/h	*	* km/h	*	* km/h
9	502	RABUS Leonhard	NSU TT							
		Lauf 1:	00:11.702	105,96 km/h	00:09.725	69,38 km/h	02:10.701	132,32 km/h	02:32.128	99,39 km/h
		Lauf 2:	00:11.288	106,69 km/h	00:09.124	71,24 km/h	02:09.490	133,96 km/h	02:29.902	100,87 km/h
		Lauf 3:	00:11.176	108,94 km/h	00:09.327	69,36 km/h	02:11.245	131,73 km/h	02:31.748	99,64 km/h
10	503	DAUBE Carsten	NSU TT							
		Lauf 1:	00:12.663	94,25 km/h	00:10.371	64,85 km/h	02:16.871	129,99 km/h	02:39.905	94,56 km/h
		Lauf 2:	00:12.118	102,88 km/h	00:09.266	63,97 km/h	02:10.046	131,33 km/h	02:31.430	99,85 km/h
		Lauf 3:	00:12.529	101,35 km/h	00:09.265	66,41 km/h	02:12.124	127,05 km/h	02:33.918	98,23 km/h
11	513	SCHWALBE Wolfgang	NSU TT							
		Lauf 1:	00:11.671	110,84 km/h	00:09.402	66,19 km/h	02:11.770	142,51 km/h	02:32.843	98,92 km/h
		Lauf 2:	00:11.658	108,29 km/h	00:09.312	65,56 km/h	02:10.760	143,72 km/h	02:31.730	99,65 km/h
		Lauf 3:	00:11.148	112,52 km/h	00:09.413	64,83 km/h	02:13.277	139,81 km/h	02:33.838	98,29 km/h
12	504	SZOTT Roman	NSU TT							
		Lauf 1:	00:11.518	107,51 km/h	00:09.813	71,46 km/h	02:20.851	129,45 km/h	02:42.182	93,23 km/h
		Lauf 2:	00:11.446	107,37 km/h	00:09.631	70,63 km/h	02:18.471	130,71 km/h	02:39.548	94,77 km/h
		Lauf 3:	00:11.454	107,74 km/h	00:09.592	68,55 km/h	02:19.241	126,13 km/h	02:40.287	94,33 km/h
13	508	HOFMANN Gerhard	NSU TT							
		Lauf 1:	00:11.972	100,05 km/h	00:10.343	61,06 km/h	02:17.684	131,41 km/h	02:39.999	94,50 km/h
		Lauf 2:	00:12.251	103,92 km/h	00:10.175	64,07 km/h	02:17.200	131,35 km/h	02:39.626	94,72 km/h
		Lauf 3:	*	* km/h	*	* km/h	*	* km/h	*	* km/h



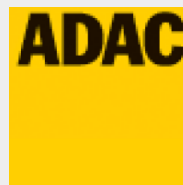
44. ADAC/MSR-Rhön Hauenstein-Bergrennen

16. bis 18. August 2013

Deutsche Bergmeisterschaft / DMSB Bergpokal

KW Gruppe H Berg-Cup / NSU Berg Pokal 2013

GLPberg Meisterschaft 2013



Sektorzeiten & Speeds - NSU Bergpokal - Klasse 1

Rg.	Nr.	Startsektor	Speed vor Kurve	90°-Kurve	Speed n. K.	Restsektor	Speed Ziel	Laufzeit	Speed (Lauf)	
14	512	NEUNER Bernhard	NSU TT							
		Lauf 1:	00:12.578	99,56 km/h	00:10.148	61,90 km/h	02:22.296	121,45 km/h	02:45.022	91,62 km/h
		Lauf 2:	00:12.860	98,90 km/h	00:09.552	66,08 km/h	02:17.891	123,25 km/h	02:40.303	94,32 km/h
		Lauf 3:	00:12.753	96,07 km/h	00:09.940	64,62 km/h	02:21.126	119,99 km/h	02:43.819	92,30 km/h
15	529	STEINWAND Manfred	NSU TT							
		Lauf 1:	00:12.419	101,27 km/h	00:10.779	47,98 km/h	02:30.800	117,64 km/h	02:53.998	86,90 km/h
		Lauf 2:	00:12.352	101,38 km/h	00:10.288	57,54 km/h	02:23.619	121,79 km/h	02:46.259	90,94 km/h
		Lauf 3:	00:12.499	99,93 km/h	00:10.376	63,13 km/h	02:22.469	117,37 km/h	02:45.344	91,45 km/h