



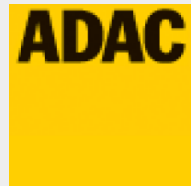
44. ADAC/MSC-Rhön Hauenstein-Bergrennen

16. bis 18. August 2013

Deutsche Bergmeisterschaft / DMSB Bergpokal

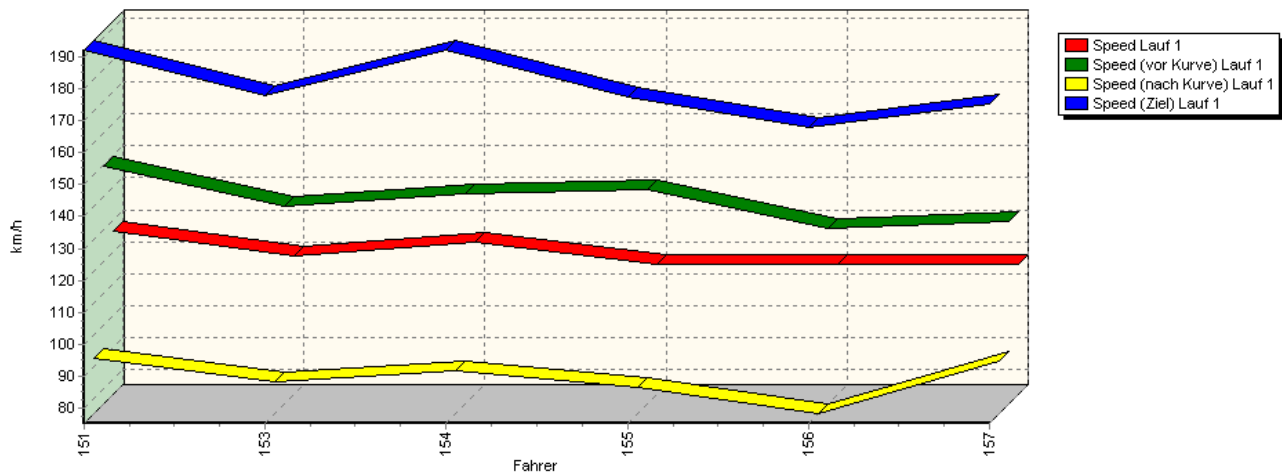
KW Gruppe H Berg-Cup / NSU Berg Pokal 2013

GLPberg Meisterschaft 2013

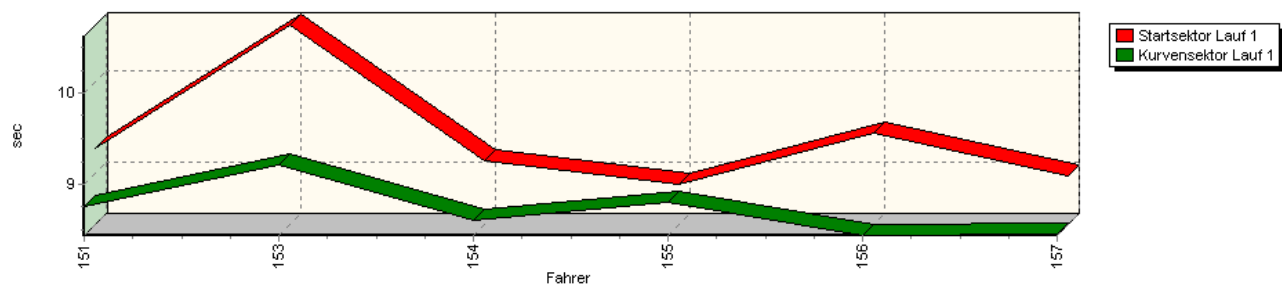


Sektorzeiten & Speeds - Gruppe E2-SS/D/Formel 3000

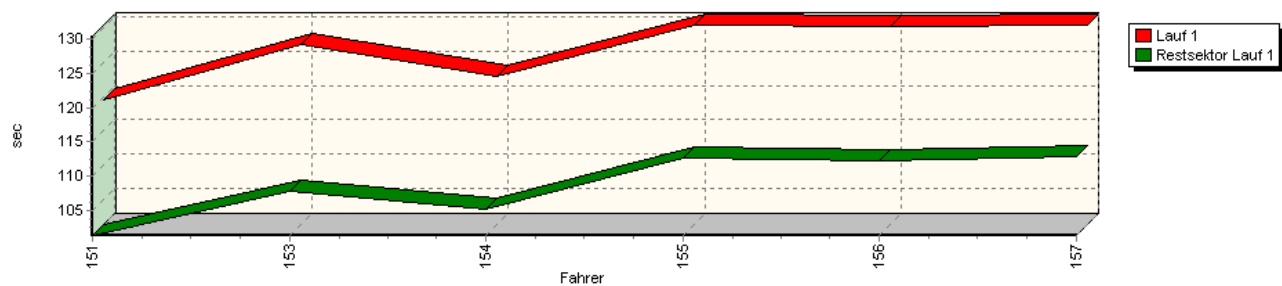
Speed-Diagramm Lauf 1



Sektor-Diagramm (Start) Lauf 1

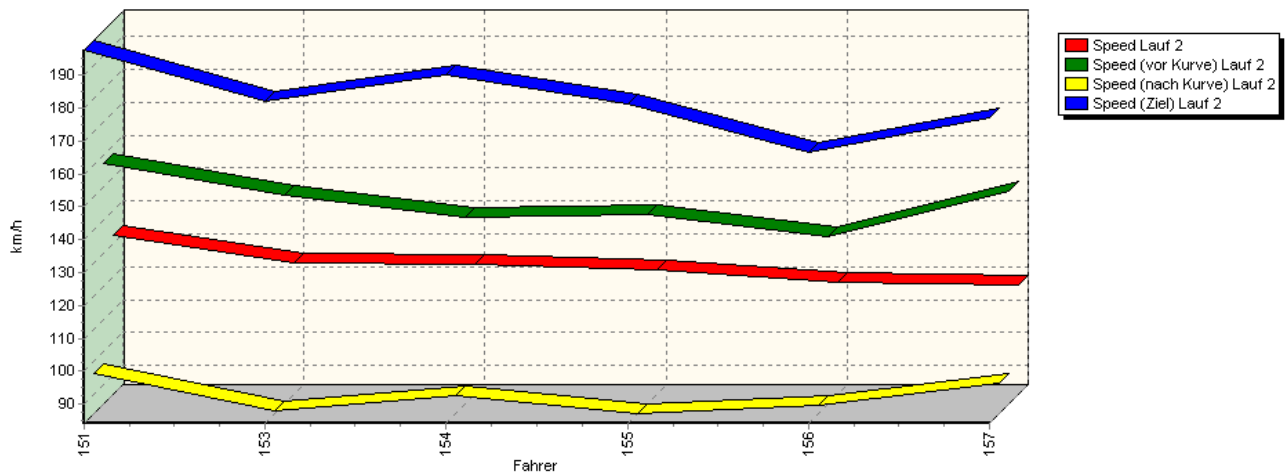


Sektor-Diagramm (Rest) Lauf 1

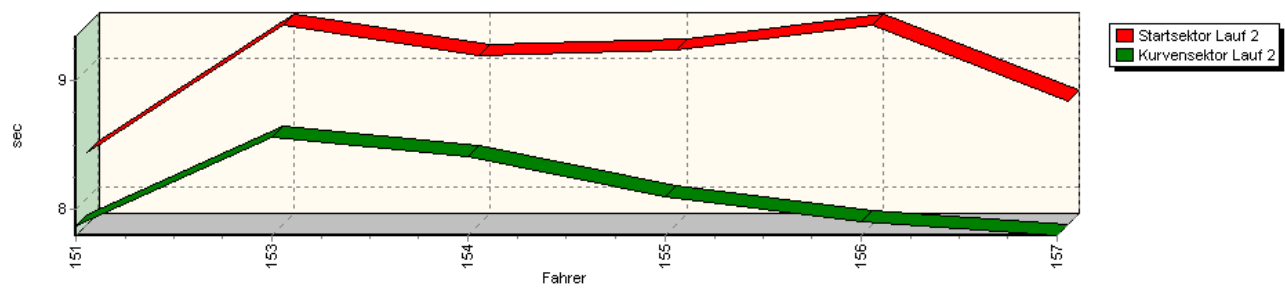


Sektorzeiten & Speeds - Gruppe E2-SS/D/Formel 3000

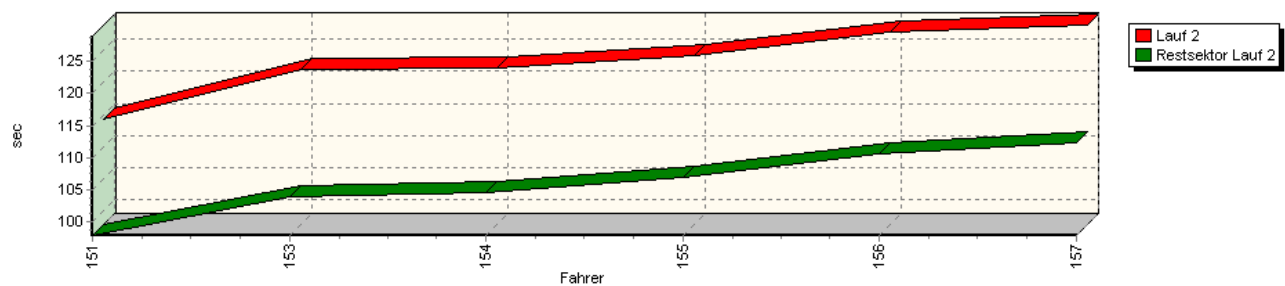
Speed-Diagramm Lauf 2



Sektor-Diagramm (Start) Lauf 2

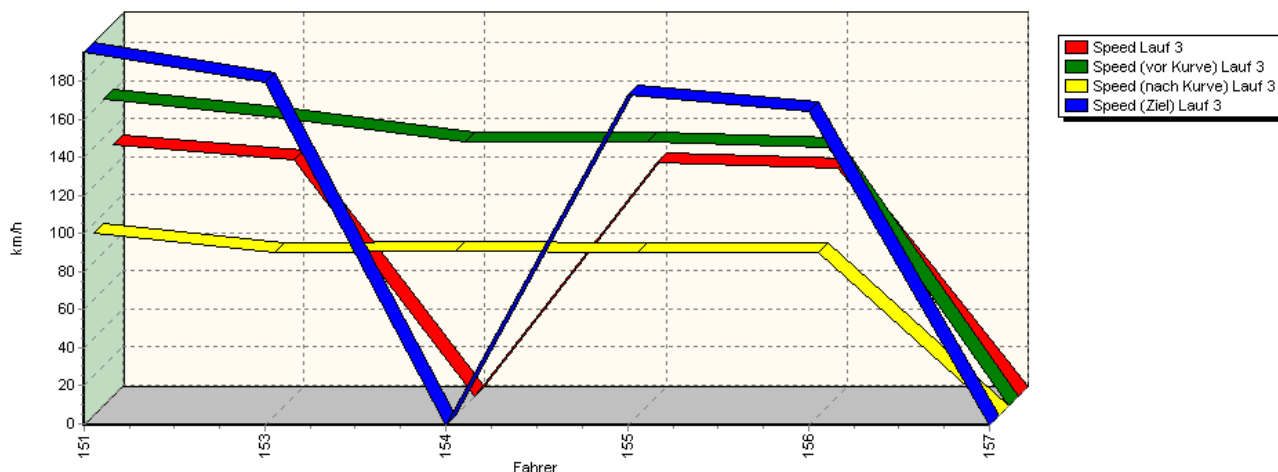


Sektor-Diagramm (Rest) Lauf 2

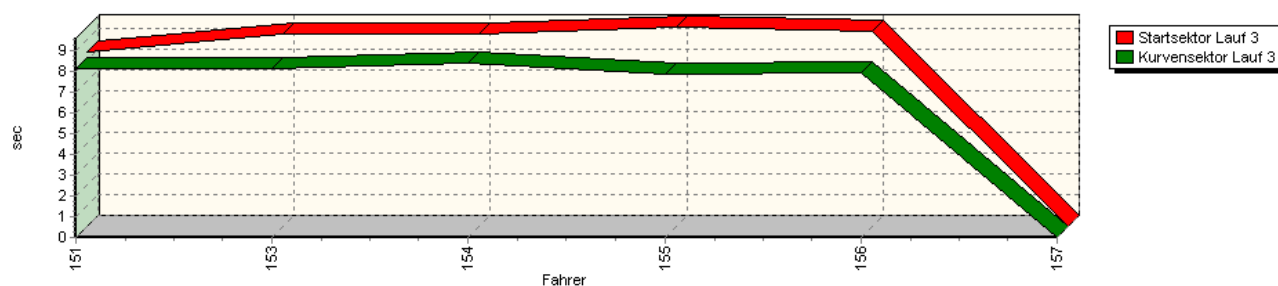


Sektorzeiten & Speeds - Gruppe E2-SS/D/Formel 3000

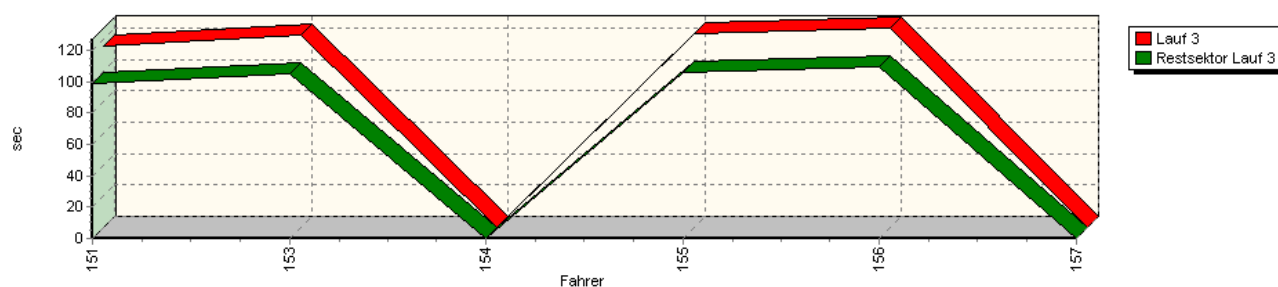
Speed-Diagramm Lauf 3



Sektor-Diagramm (Start) Lauf 3



Sektor-Diagramm (Rest) Lauf 3



Rg.	Nr.	Startsektor	Speed vor Kurve	90°-Kurve	Speed n. K.	Restsektor	Speed Ziel	Laufzeit	Speed (Lauf)	
1	151	DEBRUYNE Frank	Dallara F303							
		Lauf 1:	00:09.268	149,72 km/h	00:08.760	92,50 km/h	01:41.410	192,05 km/h	01:59.438	126,59 km/h
		Lauf 2:	00:08.357	157,27 km/h	00:07.879	96,15 km/h	01:37.931	197,74 km/h	01:54.167	132,44 km/h
		Lauf 3:	00:08.436	160.31 km/h	00:08.115	95.07 km/h	01:38.834	195.35 km/h	01:55.385	131.04 km/h



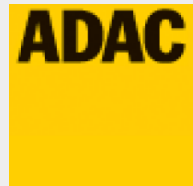
44. ADAC/MSR-Rhön Hauenstein-Bergrennen

16. bis 18. August 2013

Deutsche Bergmeisterschaft / DMSB Bergpokal

KW Gruppe H Berg-Cup / NSU Berg Pokal 2013

GLPberg Meisterschaft 2013



Sektorzeiten & Speeds - Gruppe E2-SS/D/Formel 3000

Rg.	Nr.	Startsektor	Speed vor Kurve	90°-Kurve	Speed n. K.	Restsektor	Speed Ziel	Laufzeit	Speed (Lauf)	
2	153	MEIERS Robert	Dallara F3							
		Lauf 1:	00:10.632	137,10 km/h	00:09.216	85,53 km/h	01:47.758	177,69 km/h	02:07.606	118,49 km/h
		Lauf 2:	00:09.337	147,75 km/h	00:08.556	85,10 km/h	01:44.016	182,07 km/h	02:01.909	124,03 km/h
		Lauf 3:	00:09.247	150,44 km/h	00:08.174	85,08 km/h	01:44.986	179,53 km/h	02:02.407	123,52 km/h
3	154	WOLPERT Mathieu	BSR 389							
		Lauf 1:	00:09.134	141,01 km/h	00:08.605	88,94 km/h	01:45.133	191,91 km/h	02:02.872	123,05 km/h
		Lauf 2:	00:09.109	140,91 km/h	00:08.415	89,56 km/h	01:44.691	190,19 km/h	02:02.215	123,72 km/h
		Lauf 3:	00:09.275	138,20 km/h	00:08.423	85,81 km/h	*	* km/h	A	* km/h
4	155	KRAUS Gebhard	Opel Lotus							
		Lauf 1:	00:08.871	142,22 km/h	00:08.800	83,46 km/h	01:52.687	177,37 km/h	02:10.358	115,99 km/h
		Lauf 2:	00:09.146	141,69 km/h	00:08.099	84,12 km/h	01:46.879	181,38 km/h	02:04.124	121,81 km/h
		Lauf 3:	00:09.611	137,80 km/h	00:07.909	85,08 km/h	01:46.254	173,07 km/h	02:03.774	122,16 km/h
5	156	HERZ Sascha	Formel BMW							
		Lauf 1:	00:09.438	130,46 km/h	00:08.436	75,41 km/h	01:52.234	167,81 km/h	02:10.108	116,21 km/h
		Lauf 2:	00:09.342	134,85 km/h	00:07.908	86,57 km/h	01:50.555	166,52 km/h	02:07.805	118,31 km/h
		Lauf 3:	00:09.417	134,95 km/h	00:07.933	84,93 km/h	01:49.704	164,39 km/h	02:07.054	119,00 km/h
6	157	BIHL Berhard	Black Forest Formula							
		Lauf 1:	00:08.974	132,24 km/h	00:08.455	91,66 km/h	01:52.939	175,23 km/h	02:10.368	115,98 km/h
		Lauf 2:	00:08.755	149,13 km/h	00:07.799	93,43 km/h	01:52.298	177,27 km/h	02:08.852	117,34 km/h
		Lauf 3:	*	* km/h	*	* km/h	*	* km/h	*	* km/h