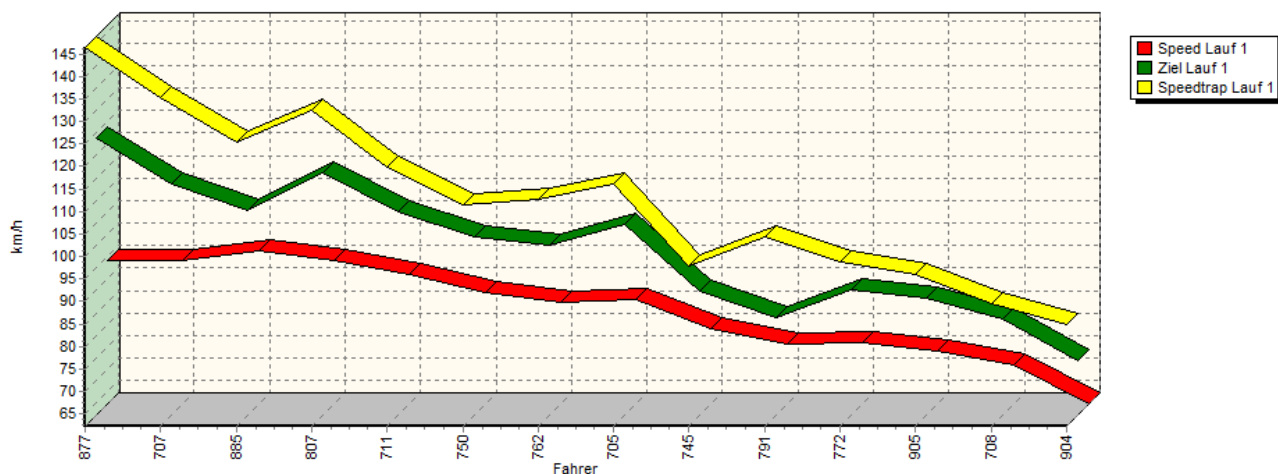
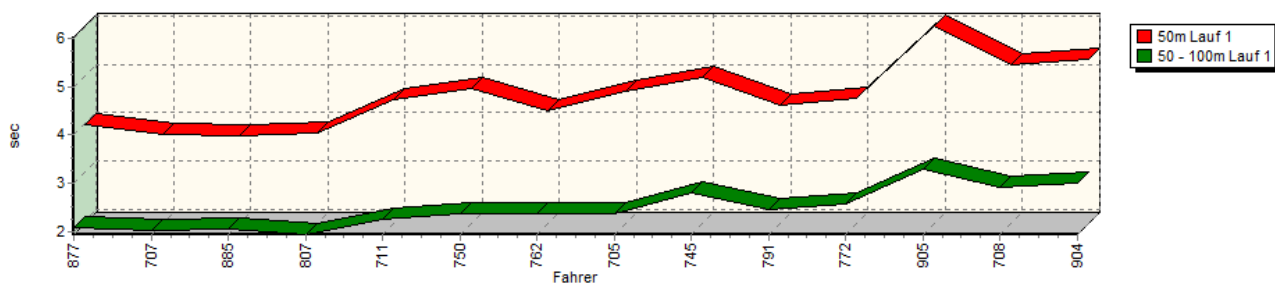


## Sektorzeiten & Speeds - Rennen - Gruppe GLP-Modus 2 (DMSB)

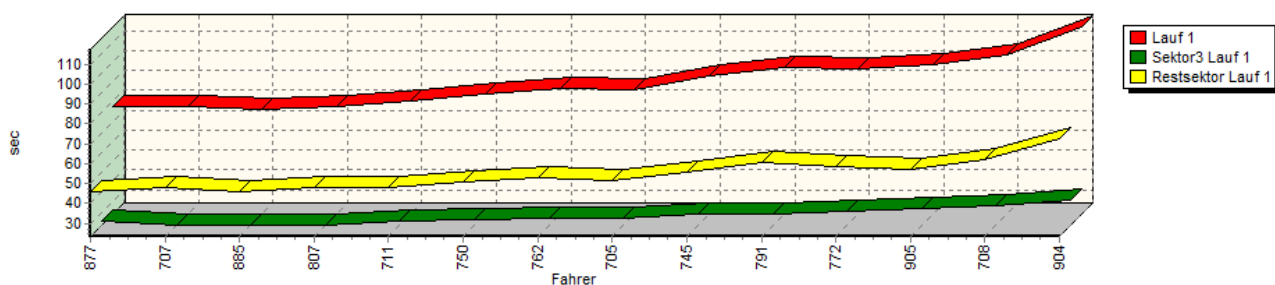
### Speed-Diagramm Lauf 1



### Sektor-Diagramm (Start) Lauf 1

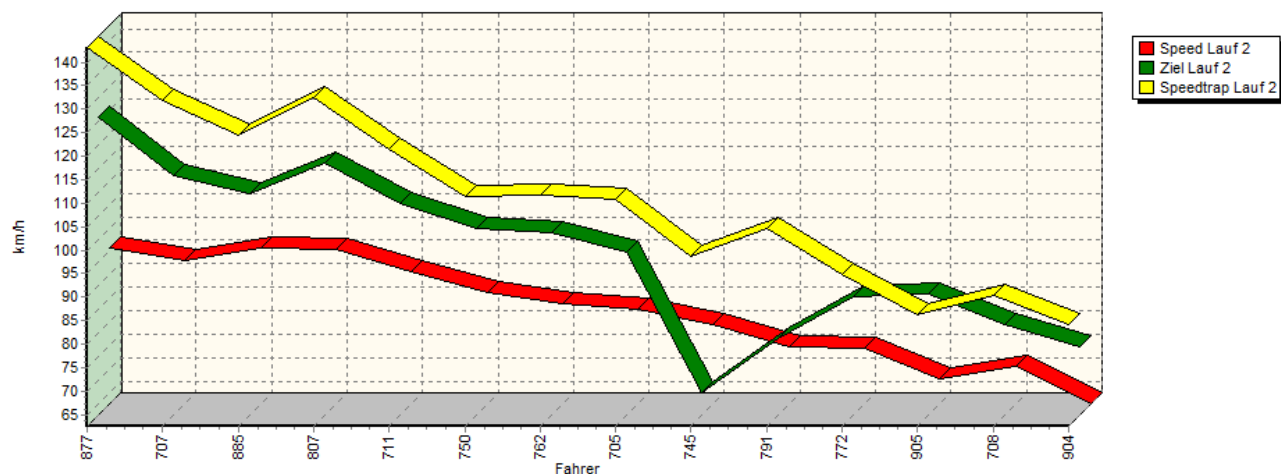


### Sektor-Diagramm (Rest) Lauf 1

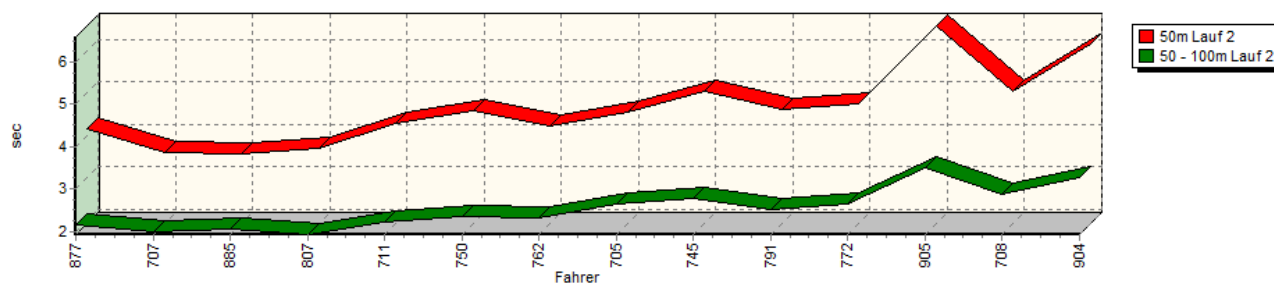


## Sektorzeiten & Speeds - Rennen - Gruppe GLP-Modus 2 (DMSB)

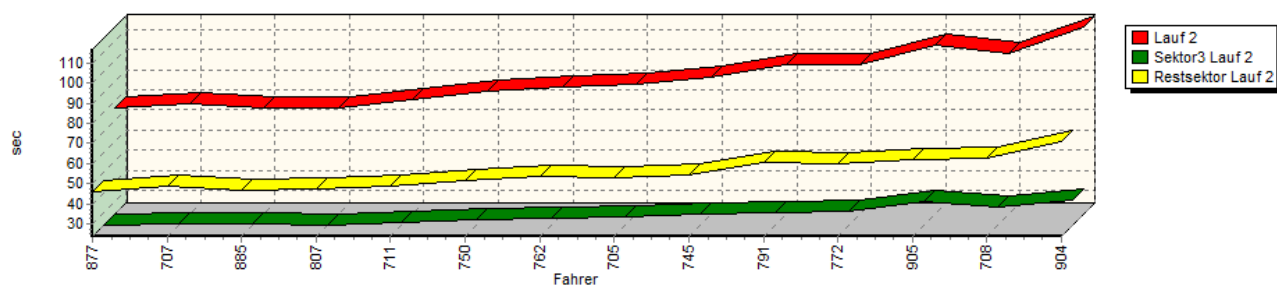
### Speed-Diagramm Lauf 2



### Sektor-Diagramm (Start) Lauf 2

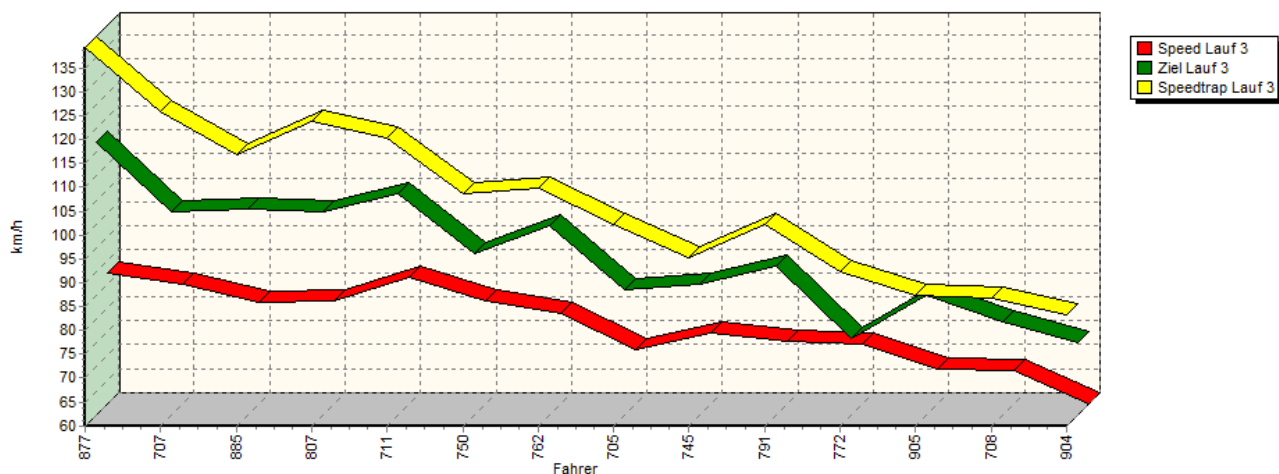


### Sektor-Diagramm (Rest) Lauf 2

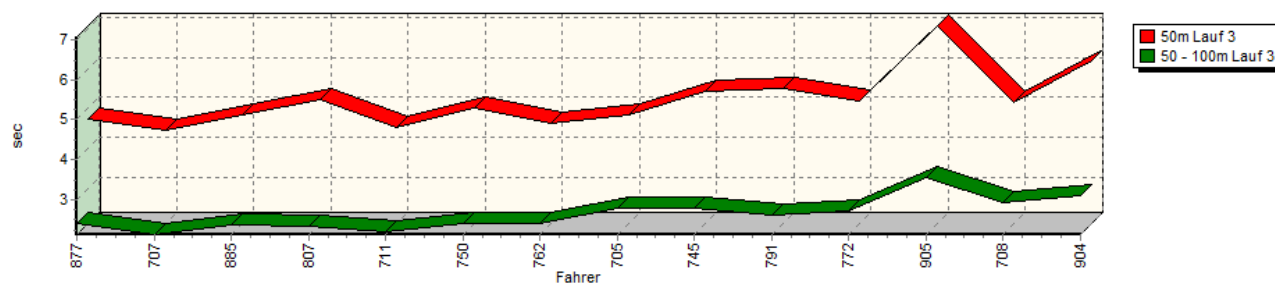


## Sektorzeiten & Speeds - Rennen - Gruppe GLP-Modus 2 (DMSB)

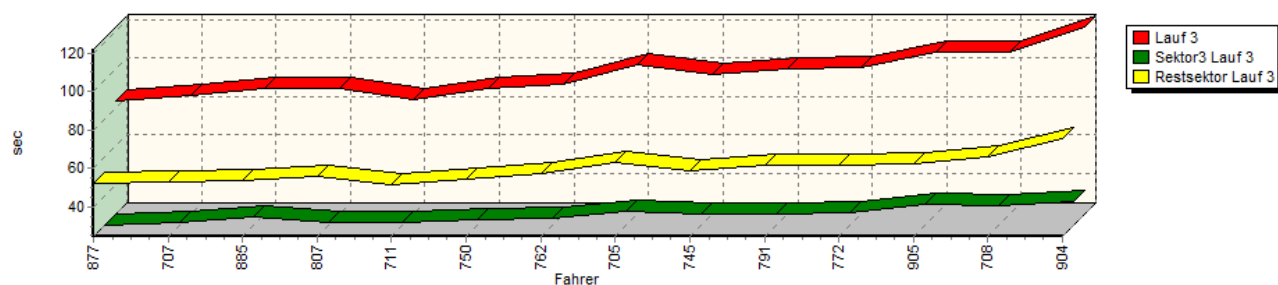
### Speed-Diagramm Lauf 3



### Sektor-Diagramm (Start) Lauf 3

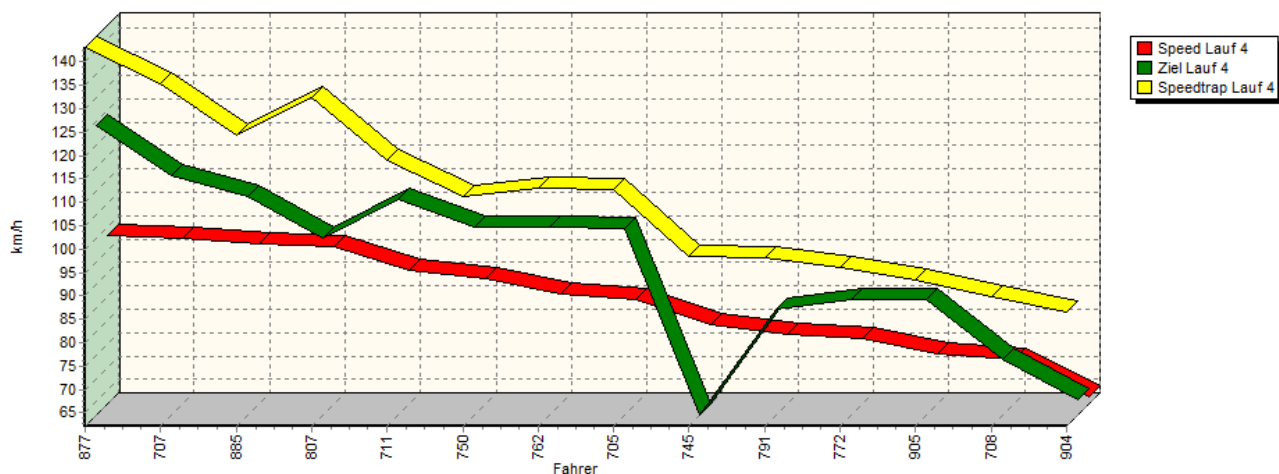


### Sektor-Diagramm (Rest) Lauf 3

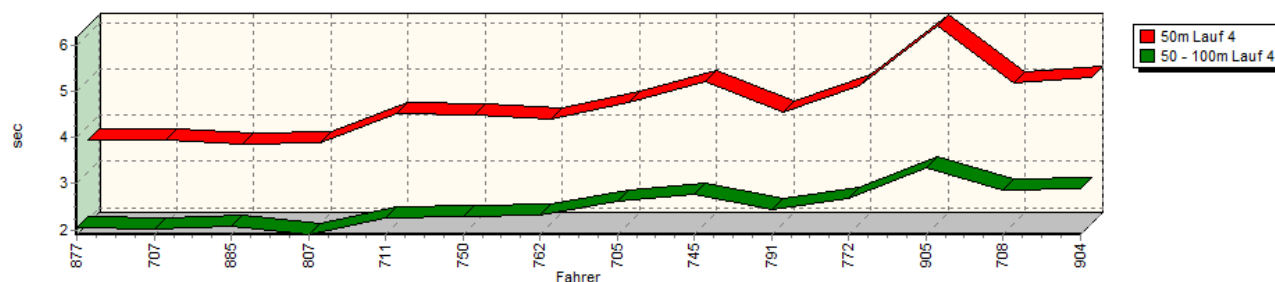


## Sektorzeiten & Speeds - Rennen - Gruppe GLP-Modus 2 (DMSB)

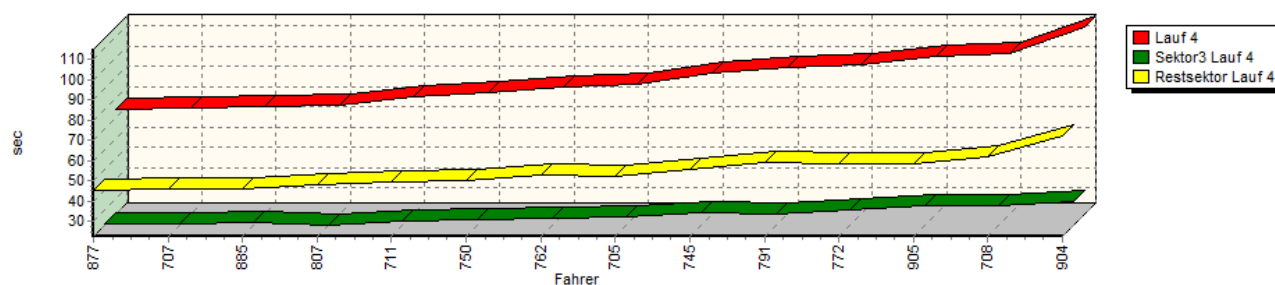
### Speed-Diagramm Lauf 4



### Sektor-Diagramm (Start) Lauf 4



### Sektor-Diagramm (Rest) Lauf 4



Rg.	Nr.	Sektor 1 (50m)	Sektor 2 (50-100m)	Sektor 3	Speed Trap	Sektor 4	Speed (Ziel)	Laufzeit	Speed (Lauf)
1	877	<b>BASSE Wolfgang</b>							
		Martini Renault Formel 3							
	Lauf 1:	00:03.977	00:02.073	00:25.573	146,45 km/h	00:46.102	123,75 km/h	01:17.725	94,02 km/h
	Lauf 2:	00:04.142	00:02.146	00:23.863	143,12 km/h	00:46.158	126,00 km/h	01:16.309	95,77 km/h
	Lauf 3:	00:04.735	00:02.384	00:24.628	139,35 km/h	00:51.997	117,22 km/h	01:23.744	87,27 km/h
	Lauf 4:	00:03.723	00:02.061	00:23.114	143,08 km/h	00:45.508	123,92 km/h	01:14.406	98,22 km/h

## Sektorzeiten & Speeds - Rennen - Gruppe GLP-Modus 2 (DMSB)

Rg.	Nr.		Sektor 1 (50m)	Sektor 2 (50-100m)	Sektor 3	Speed Trap	Sektor 4	Speed (Ziel)	Laufzeit	Speed (Lauf)
2	707	<b>DUBE Norbert</b>	VW Käfer 1302 S							
		Lauf 1:	00:03.790	00:02.005	00:23.666	135,19 km/h	00:48.090	113,61 km/h	01:17.551	94,23 km/h
		Lauf 2:	00:03.612	00:01.989	00:24.397	131,97 km/h	00:48.521	113,44 km/h	01:18.519	93,07 km/h
		Lauf 3:	00:04.473	00:02.122	00:26.371	126,03 km/h	00:53.126	102,58 km/h	01:26.092	84,89 km/h
		Lauf 4:	00:03.721	00:02.011	00:23.292	135,26 km/h	00:45.970	113,47 km/h	01:14.994	97,45 km/h
3	885	<b>FELDMANN Hannes</b>	Formel Ford 1600 van Diemen							
		Lauf 1:	00:03.760	00:02.052	00:23.831	125,55 km/h	00:46.145	107,63 km/h	01:15.788	96,43 km/h
		Lauf 2:	00:03.581	00:02.049	00:24.374	124,41 km/h	00:46.440	109,63 km/h	01:16.444	95,60 km/h
		Lauf 3:	00:04.856	00:02.361	00:29.178	117,00 km/h	00:53.620	103,15 km/h	01:30.015	81,19 km/h
		Lauf 4:	00:03.621	00:02.085	00:24.289	124,28 km/h	00:45.825	108,88 km/h	01:15.820	96,39 km/h
4	807	<b>HALL Richard Alan</b>	Lotus Seven S1							
		Lauf 1:	00:03.815	00:01.929	00:23.545	132,45 km/h	00:48.289	116,03 km/h	01:17.578	94,20 km/h
		Lauf 2:	00:03.681	00:01.919	00:23.899	132,53 km/h	00:47.184	116,11 km/h	01:16.683	95,30 km/h
		Lauf 3:	00:05.243	00:02.335	00:26.269	123,75 km/h	00:55.872	102,41 km/h	01:29.719	81,45 km/h
		Lauf 4:	00:03.641	00:01.898	00:22.759	132,27 km/h	00:48.053	99,83 km/h	01:16.351	95,72 km/h
5	711	<b>BOCK Burkhard</b>	Opel Manta							
		Lauf 1:	00:04.515	00:02.242	00:25.522	119,82 km/h	00:48.025	107,39 km/h	01:20.304	91,00 km/h
		Lauf 2:	00:04.299	00:02.202	00:24.967	121,49 km/h	00:49.083	107,57 km/h	01:20.551	90,73 km/h
		Lauf 3:	00:04.538	00:02.200	00:26.068	120,45 km/h	00:51.663	106,35 km/h	01:24.469	86,52 km/h
		Lauf 4:	00:04.278	00:02.249	00:24.652	118,90 km/h	00:49.429	108,17 km/h	01:20.608	90,66 km/h
6	750	<b>LEWITZKI Stephan</b>	Ford Anglia							
		Lauf 1:	00:04.731	00:02.366	00:26.326	111,58 km/h	00:50.640	101,95 km/h	01:24.063	86,94 km/h
		Lauf 2:	00:04.584	00:02.332	00:26.513	111,55 km/h	00:51.270	102,23 km/h	01:24.699	86,28 km/h
		Lauf 3:	00:05.004	00:02.384	00:27.535	108,68 km/h	00:54.767	93,76 km/h	01:29.690	81,48 km/h
		Lauf 4:	00:04.262	00:02.297	00:25.555	111,33 km/h	00:50.097	102,42 km/h	01:22.211	88,89 km/h
7	762	<b>RAULFS Hermann</b>	VW Golf II 16V							
		Lauf 1:	00:04.283	00:02.373	00:26.842	112,75 km/h	00:52.757	100,14 km/h	01:26.255	84,73 km/h
		Lauf 2:	00:04.227	00:02.305	00:27.004	111,79 km/h	00:53.564	101,24 km/h	01:27.100	83,90 km/h
		Lauf 3:	00:04.620	00:02.398	00:28.516	109,84 km/h	00:56.995	99,52 km/h	01:32.529	78,98 km/h
		Lauf 4:	00:04.149	00:02.307	00:26.239	113,16 km/h	00:52.654	102,42 km/h	01:25.349	85,63 km/h
8	705	<b>TWEDDELL Klaus</b>	Ginetta G12							
		Lauf 1:	00:04.685	00:02.377	00:27.229	116,03 km/h	00:51.277	104,66 km/h	01:25.568	85,41 km/h
		Lauf 2:	00:04.560	00:02.638	00:27.765	110,88 km/h	00:53.326	97,07 km/h	01:28.289	82,77 km/h
		Lauf 3:	00:04.859	00:02.794	00:31.609	102,27 km/h	01:03.441	86,22 km/h	01:42.703	71,16 km/h
		Lauf 4:	00:04.537	00:02.609	00:26.939	112,71 km/h	00:52.384	101,98 km/h	01:26.469	84,52 km/h
9	745	<b>VON FRAGSTEIN Oliver</b>	Ford Escort 1800							
		Lauf 1:	00:04.961	00:02.784	00:29.416	97,96 km/h	00:55.507	89,81 km/h	01:32.668	78,86 km/h
		Lauf 2:	00:05.051	00:02.764	00:29.381	98,64 km/h	00:54.697	67,39 km/h	01:31.893	79,53 km/h
		Lauf 3:	00:05.422	00:02.781	00:30.626	95,16 km/h	00:58.697	87,22 km/h	01:37.526	74,93 km/h
		Lauf 4:	00:04.964	00:02.783	00:29.016	98,34 km/h	00:55.513	62,14 km/h	01:32.276	79,20 km/h
10	791	<b>STIEREN Max</b>	Alfa Romeo Alfetta GTV 2.0							
		Lauf 1:	00:04.395	00:02.455	00:29.442	104,40 km/h	01:00.557	83,95 km/h	01:36.849	75,46 km/h
		Lauf 2:	00:04.618	00:02.499	00:29.925	104,47 km/h	01:00.754	78,96 km/h	01:37.796	74,73 km/h
		Lauf 3:	00:05.497	00:02.620	00:30.380	102,27 km/h	01:01.437	91,02 km/h	01:39.934	73,13 km/h
		Lauf 4:	00:04.317	00:02.452	00:28.583	98,19 km/h	00:59.449	84,85 km/h	01:34.801	77,09 km/h

### Sektorzeiten & Speeds - Rennen - Gruppe GLP-Modus 2 (DMSB)

Rg.	Nr.		Sektor 1 (50m)	Sektor 2 (50-100m)	Sektor 3	Speed Trap	Sektor 4	Speed (Ziel)	Laufzeit	Speed (Lauf)
11	772	<b>HAASE Monika</b>	Peugeot 205 GTI 1,6							
		Lauf 1:	00:04.530	00:02.562	00:30.472	98,73 km/h	00:58.755	90,20 km/h	01:36.319	75,87 km/h
		Lauf 2:	00:04.755	00:02.644	00:30.954	94,83 km/h	00:59.782	87,59 km/h	01:38.135	74,47 km/h
		Lauf 3:	00:05.182	00:02.723	00:31.245	92,29 km/h	01:01.753	75,82 km/h	01:40.903	72,43 km/h
		Lauf 4:	00:04.876	00:02.676	00:30.015	95,98 km/h	00:58.386	86,71 km/h	01:35.953	76,16 km/h
12	905	<b>BRAUCKMANN Werner</b>	Fiat Abarth 850 TC							
		Lauf 1:	00:06.036	00:03.291	00:31.959	95,88 km/h	00:57.363	88,15 km/h	01:38.649	74,08 km/h
		Lauf 2:	00:06.595	00:03.486	00:35.382	86,23 km/h	01:02.354	88,21 km/h	01:47.817	67,78 km/h
		Lauf 3:	00:07.074	00:03.544	00:35.620	87,32 km/h	01:02.437	84,99 km/h	01:48.675	67,25 km/h
		Lauf 4:	00:06.184	00:03.361	00:32.528	93,34 km/h	00:58.224	86,84 km/h	01:40.297	72,86 km/h
13	708	<b>LATZEL Dieter</b>	Steyr-Puch 500 S							
		Lauf 1:	00:05.237	00:02.926	00:33.067	89,51 km/h	01:02.000	83,67 km/h	01:43.230	70,79 km/h
		Lauf 2:	00:05.054	00:02.867	00:32.993	90,41 km/h	01:02.541	81,78 km/h	01:43.455	70,64 km/h
		Lauf 3:	00:05.168	00:02.915	00:35.149	86,70 km/h	01:05.927	79,35 km/h	01:49.159	66,95 km/h
		Lauf 4:	00:04.933	00:02.856	00:32.394	89,70 km/h	01:01.864	73,94 km/h	01:42.047	71,61 km/h
14	904	<b>GRÄSEL Joachim</b>	Mini Cooper S							
		Lauf 1:	00:05.342	00:03.010	00:36.437	84,81 km/h	01:12.567	74,37 km/h	01:57.356	62,27 km/h
		Lauf 2:	00:06.170	00:03.264	00:36.080	84,04 km/h	01:11.297	76,93 km/h	01:56.811	62,56 km/h
		Lauf 3:	00:06.194	00:03.102	00:37.085	83,29 km/h	01:15.624	75,14 km/h	02:02.005	59,90 km/h
		Lauf 4:	00:05.060	00:02.901	00:34.367	86,44 km/h	01:12.477	65,30 km/h	01:54.805	63,66 km/h