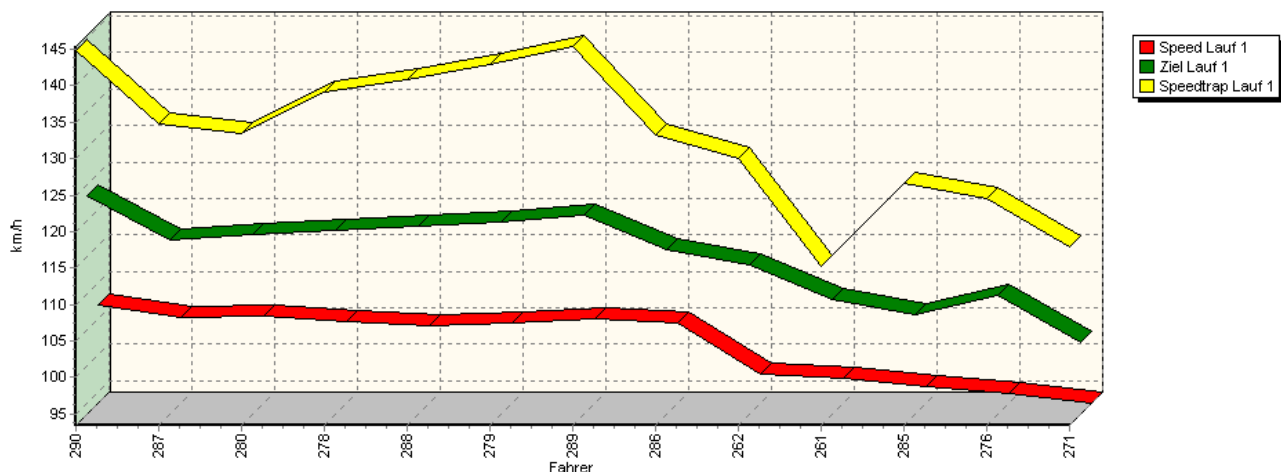
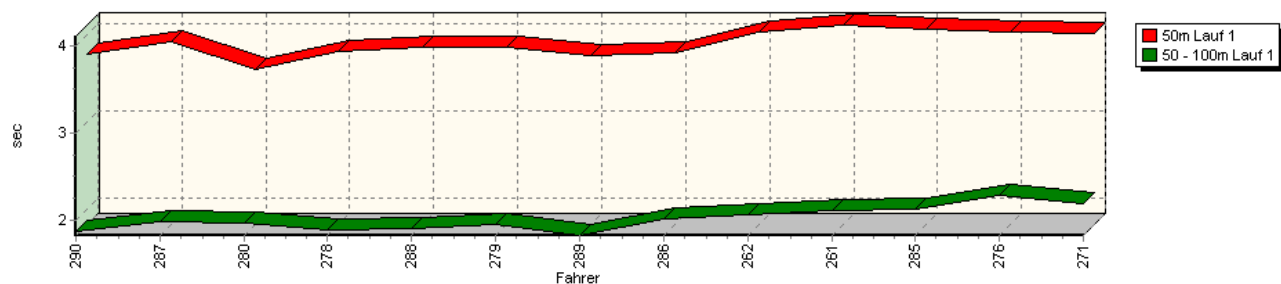


Sektorzeiten & Speeds - Training - Gruppe H bis 1300 ccm - Klasse 38

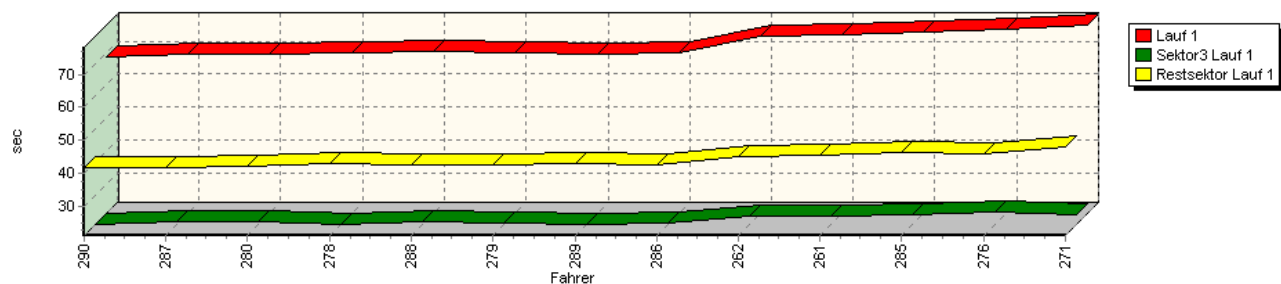
Speed-Diagramm Lauf 1



Sektor-Diagramm (Start) Lauf 1

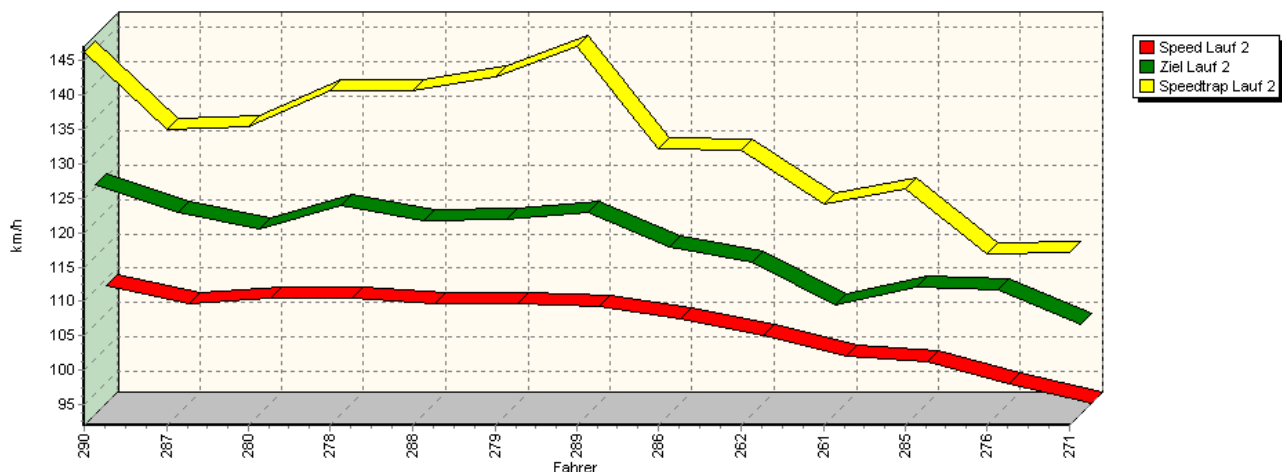


Sektor-Diagramm (Rest) Lauf 1

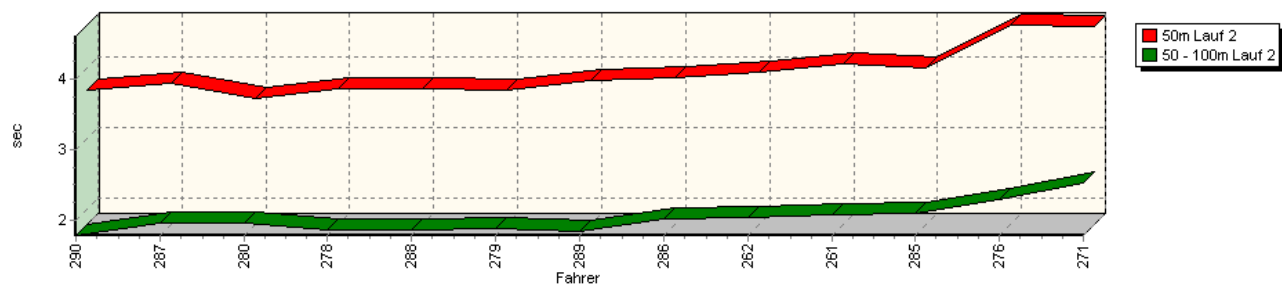


Sektorzeiten & Speeds - Training - Gruppe H bis 1300 ccm - Klasse 38

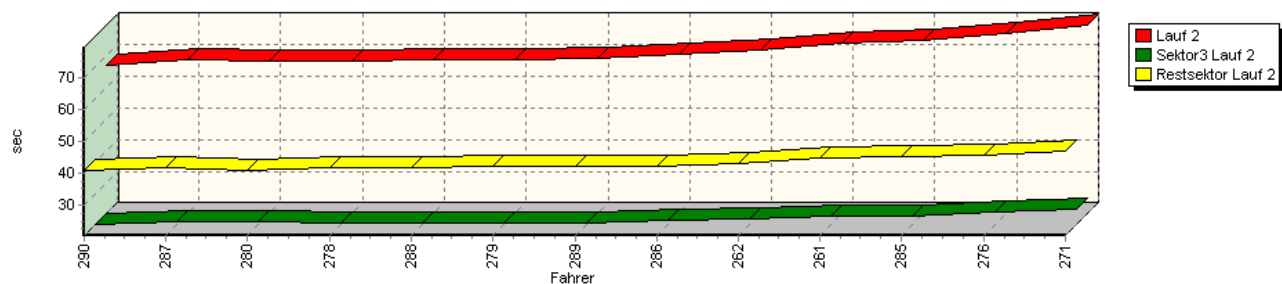
Speed-Diagramm Lauf 2



Sektor-Diagramm (Start) Lauf 2

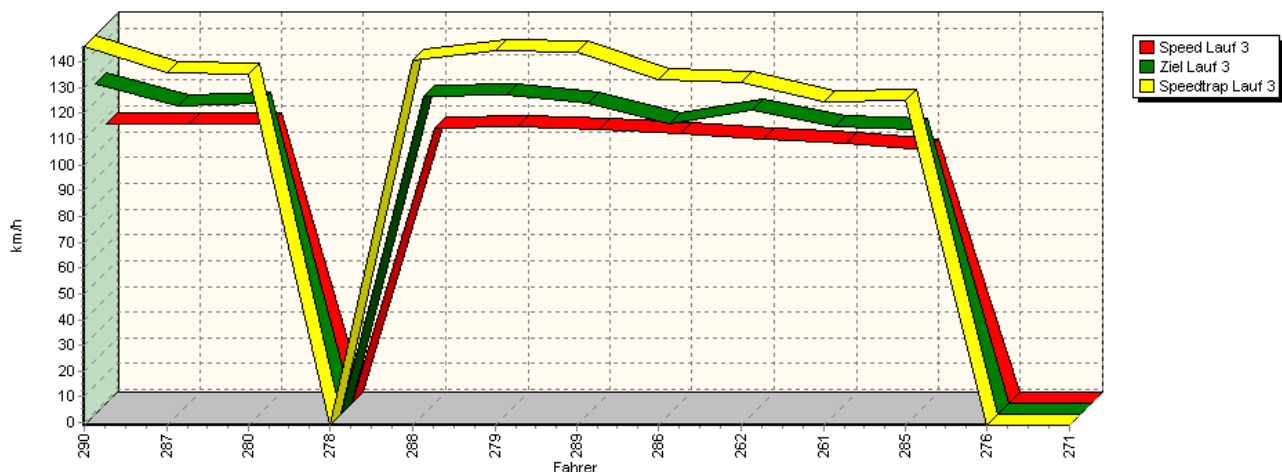


Sektor-Diagramm (Rest) Lauf 2

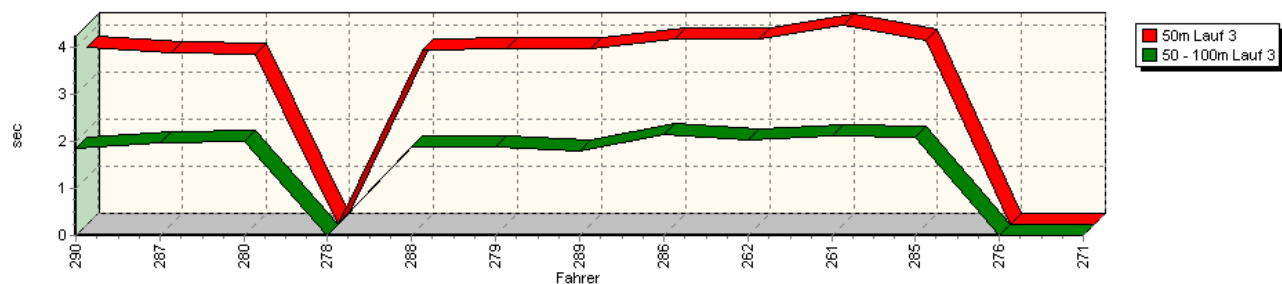


Sektorzeiten & Speeds - Training - Gruppe H bis 1300 ccm - Klasse 38

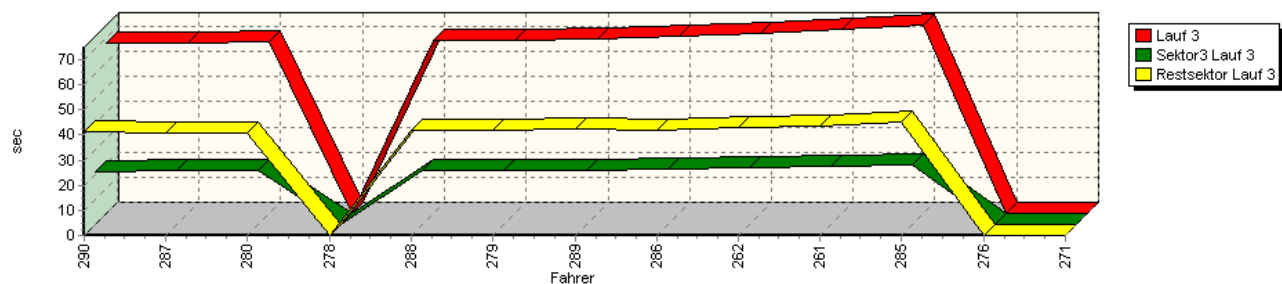
Speed-Diagramm Lauf 3



Sektor-Diagramm (Start) Lauf 3

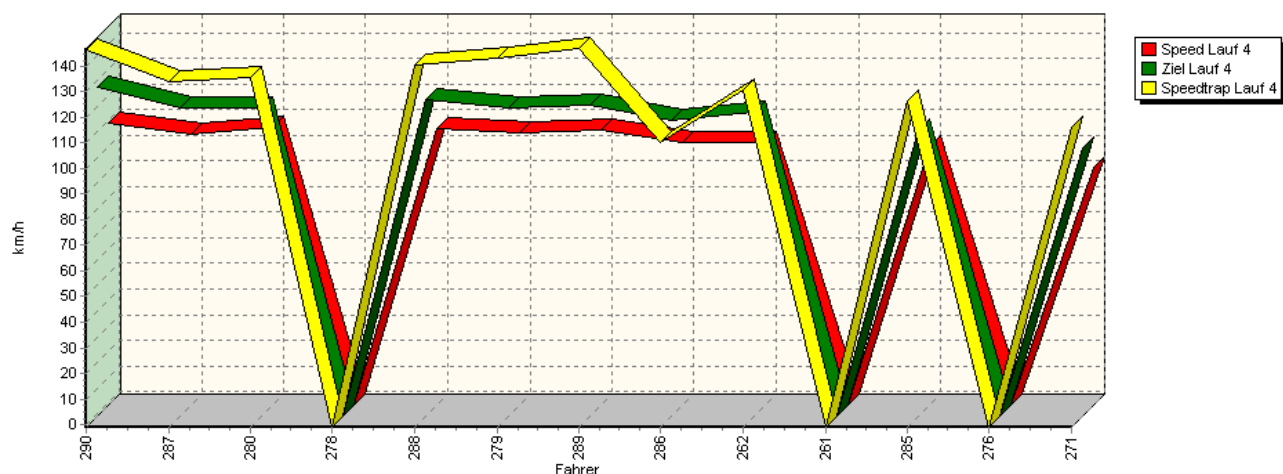


Sektor-Diagramm (Rest) Lauf 3

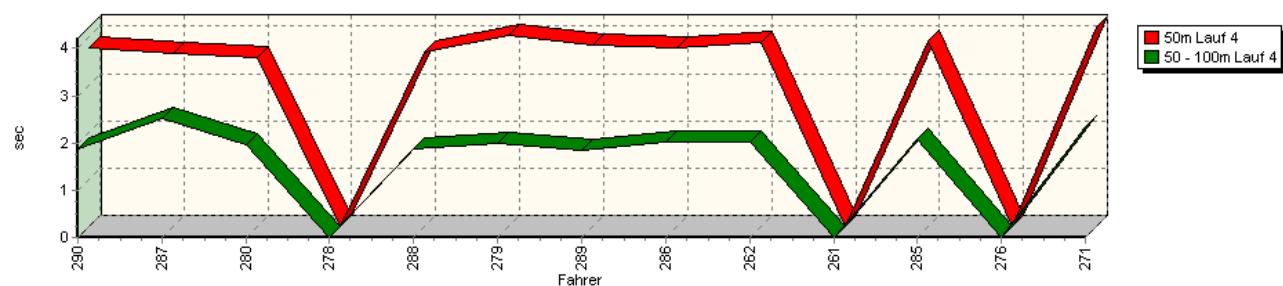


Sektorzeiten & Speeds - Training - Gruppe H bis 1300 ccm - Klasse 38

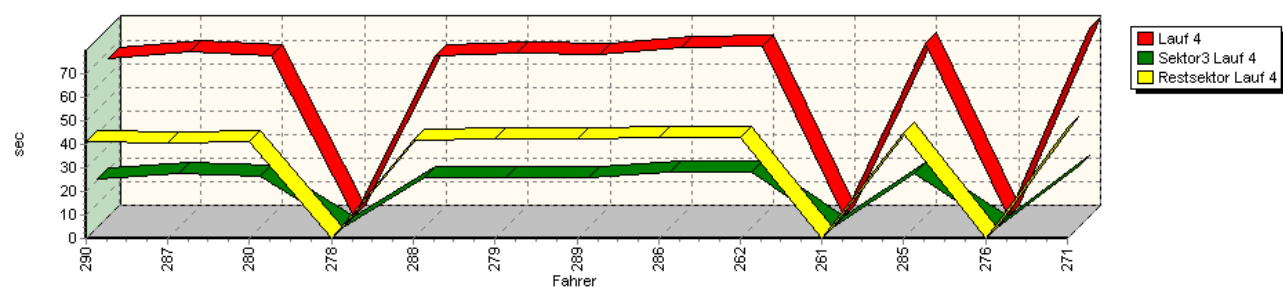
Speed-Diagramm Lauf 4



Sektor-Diagramm (Start) Lauf 4



Sektor-Diagramm (Rest) Lauf 4



Rg.	Nr.	Sektor 1 (50m)	Sektor 2 (50-100m)	Sektor 3	Speed Trap	Sektor 4	Speed (Ziel)	Laufzeit	Speed (Lauf)
1	290	WEIßDORN Franz		VW Polo 16V					
		Lauf 1:	00:03.773	00:01.861	00:21.151	144,89 km/h	00:41.585	123,34 km/h	01:08.370
		Lauf 2:	00:03.695	00:01.793	00:20.588	146,15 km/h	00:40.879	125,36 km/h	01:06.955
		Lauf 3:	00:03.783	00:01.861	00:21.089	145,98 km/h	00:41.263	127,04 km/h	01:07.996
		Lauf 4:	00:03.763	00:01.876	00:20.511	146,18 km/h	00:40.951	127,38 km/h	01:07.101



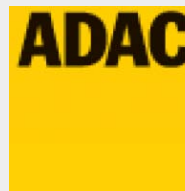
44. Osnabrücker ADAC Bergrennen

13. und 14. August 2011

Deutsche Bergmeisterschaft 2011

DMSB Bergpokal für Tourenwagen und Rennsportfahrzeuge

DMSB Classic-Berg-Pokal - KW Gruppe H Berg-Cup



Sektorzeiten & Speeds - Training - Gruppe H bis 1300 ccm - Klasse 38

Rg.	Nr.		Sektor 1 (50m)	Sektor 2 (50-100m)	Sektor 3	Speed Trap	Sektor 4	Speed (Ziel)	Laufzeit	Speed (Lauf)
2	287	EBENHÖH Armin	VW Polo I Minichberger 16V							
		Lauf 1:	00:03.925	00:01.980	00:21.852	134,74 km/h	00:41.737	117,28 km/h	01:09.494	105,16 km/h
		Lauf 2:	00:03.795	00:01.969	00:21.269	135,01 km/h	00:41.619	121,22 km/h	01:08.652	106,45 km/h
		Lauf 3:	00:03.649	00:01.969	00:21.565	135,79 km/h	00:40.750	118,54 km/h	01:07.933	107,58 km/h
		Lauf 4:	00:03.674	00:02.532	00:23.019	133,96 km/h	00:40.535	119,42 km/h	01:09.760	104,76 km/h
3	280	SPÖRI Markus	Suzuki Swift GTI 16V 4WD							
		Lauf 1:	00:03.603	00:01.967	00:21.845	133,47 km/h	00:41.979	118,05 km/h	01:09.394	105,31 km/h
		Lauf 2:	00:03.572	00:01.972	00:21.394	135,43 km/h	00:41.113	118,96 km/h	01:08.051	107,39 km/h
		Lauf 3:	00:03.619	00:01.989	00:21.523	135,08 km/h	00:41.029	119,85 km/h	01:08.160	107,22 km/h
		Lauf 4:	00:03.575	00:01.969	00:21.517	135,41 km/h	00:41.077	119,33 km/h	01:08.138	107,25 km/h
4	278	STELBERG André	VW Schneider Polo I 16V							
		Lauf 1:	00:03.810	00:01.882	00:21.266	139,21 km/h	00:42.943	118,70 km/h	01:09.901	104,55 km/h
		Lauf 2:	00:03.715	00:01.864	00:20.919	140,57 km/h	00:41.642	122,40 km/h	01:08.140	107,25 km/h
		Lauf 3:	*	*	*	* km/h	*	* km/h	*	* km/h
		Lauf 4:	*	*	*	* km/h	*	* km/h	*	* km/h
5	288	BERNERT Klaus	VW Polo 16V							
		Lauf 1:	00:03.858	00:01.901	00:21.920	140,84 km/h	00:42.599	119,18 km/h	01:10.278	103,99 km/h
		Lauf 2:	00:03.701	00:01.880	00:21.137	140,48 km/h	00:41.851	120,05 km/h	01:08.569	106,58 km/h
		Lauf 3:	00:03.713	00:01.884	00:21.764	140,72 km/h	00:41.770	122,49 km/h	01:09.131	105,71 km/h
		Lauf 4:	00:03.699	00:01.879	00:21.192	140,27 km/h	00:41.565	122,69 km/h	01:08.335	106,94 km/h
6	279	MOSER Gerhard	VW Polo							
		Lauf 1:	00:03.863	00:01.947	00:21.451	142,97 km/h	00:42.736	119,73 km/h	01:09.997	104,41 km/h
		Lauf 2:	00:03.686	00:01.900	00:20.934	142,53 km/h	00:42.099	120,25 km/h	01:08.619	106,50 km/h
		Lauf 3:	00:03.736	00:01.894	00:21.382	144,23 km/h	00:41.872	123,04 km/h	01:08.884	106,09 km/h
		Lauf 4:	00:04.048	00:01.980	00:21.421	142,89 km/h	00:42.092	119,10 km/h	01:09.541	105,09 km/h
7	289	KONRAD Manfred	VW Corrado							
		Lauf 1:	00:03.767	00:01.817	00:21.254	145,40 km/h	00:42.779	120,71 km/h	01:09.617	104,97 km/h
		Lauf 2:	00:03.817	00:01.842	00:20.916	146,95 km/h	00:42.310	121,23 km/h	01:08.885	106,09 km/h
		Lauf 3:	00:03.732	00:01.805	00:21.549	143,99 km/h	00:42.252	119,83 km/h	01:09.338	105,40 km/h
		Lauf 4:	00:03.831	00:01.846	00:20.885	146,74 km/h	00:42.076	120,58 km/h	01:08.638	106,47 km/h
8	286	GÖTZL Helmut	VW Polo							
		Lauf 1:	00:03.801	00:02.004	00:21.603	133,25 km/h	00:42.596	115,98 km/h	01:10.004	104,39 km/h
		Lauf 2:	00:03.859	00:02.018	00:21.907	132,10 km/h	00:42.329	116,35 km/h	01:10.113	104,23 km/h
		Lauf 3:	00:03.945	00:02.136	00:22.271	132,91 km/h	00:42.112	111,53 km/h	01:10.464	103,71 km/h
		Lauf 4:	00:03.780	00:02.026	00:23.196	110,11 km/h	00:42.867	114,26 km/h	01:11.869	101,69 km/h
9	262	LOHMANN Frank	VW Polo 8V							
		Lauf 1:	00:04.031	00:02.050	00:23.863	130,06 km/h	00:45.080	113,91 km/h	01:15.024	97,41 km/h
		Lauf 2:	00:03.951	00:02.039	00:22.454	131,97 km/h	00:43.253	114,08 km/h	01:11.697	101,93 km/h
		Lauf 3:	00:03.935	00:02.028	00:22.777	132,26 km/h	00:43.139	117,20 km/h	01:11.879	101,67 km/h
		Lauf 4:	00:03.895	00:02.021	00:23.346	130,47 km/h	00:42.881	117,49 km/h	01:12.143	101,30 km/h
10	261	TRIEBSTEIN Christian	VW Polo I 8V							
		Lauf 1:	00:04.116	00:02.099	00:23.657	115,17 km/h	00:45.579	109,16 km/h	01:15.451	96,86 km/h
		Lauf 2:	00:04.059	00:02.085	00:23.026	124,21 km/h	00:44.756	107,90 km/h	01:13.926	98,86 km/h
		Lauf 3:	00:04.242	00:02.119	00:23.078	124,78 km/h	00:43.761	110,68 km/h	01:13.200	99,84 km/h
		Lauf 4:	*	*	*	* km/h	*	* km/h	*	* km/h



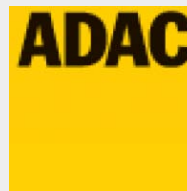
44. Osnabrücker ADAC Bergrennen

13. und 14. August 2011

Deutsche Bergmeisterschaft 2011

DMSB Bergpokal für Tourenwagen und Rennsportfahrzeuge

DMSB Classic-Berg-Pokal - KW Gruppe H Berg-Cup



Sektorzeiten & Speeds - Training - Gruppe H bis 1300 ccm - Klasse 38

Rg.	Nr.		Sektor 1 (50m)	Sektor 2 (50-100m)	Sektor 3	Speed Trap	Sektor 4	Speed (Ziel)	Laufzeit	Speed (Lauf)
11	285	SMYREK Jörg		Audi 50 8V						
		Lauf 1:	00:04.068	00:02.124	00:23.954	126,63 km/h	00:46.168	107,15 km/h	01:16.314	95,76 km/h
		Lauf 2:	00:03.998	00:02.112	00:23.287	126,34 km/h	00:45.082	110,45 km/h	01:14.479	98,12 km/h
		Lauf 3:	00:03.908	00:02.099	00:23.945	124,84 km/h	00:45.063	109,26 km/h	01:15.015	97,42 km/h
		Lauf 4:	00:03.928	00:02.087	00:22.977	126,11 km/h	00:44.360	110,40 km/h	01:13.352	99,63 km/h
12	276	ABB Nils		VW Schneider Polo II 8V						
		Lauf 1:	00:04.033	00:02.275	00:24.885	124,60 km/h	00:45.924	109,70 km/h	01:17.117	94,77 km/h
		Lauf 2:	00:04.607	00:02.303	00:24.483	116,93 km/h	00:45.570	110,12 km/h	01:16.963	94,95 km/h
		Lauf 3:	*	*	*	* km/h	*	* km/h	*	* km/h
		Lauf 4:	*	*	*	* km/h	*	* km/h	*	* km/h
13	271	EIRICH Raimund		VW Polo 86C 8V						
		Lauf 1:	00:04.014	00:02.185	00:24.144	117,91 km/h	00:47.888	103,35 km/h	01:18.231	93,41 km/h
		Lauf 2:	00:04.578	00:02.528	00:25.268	117,08 km/h	00:46.998	105,10 km/h	01:19.372	92,07 km/h
		Lauf 3:	*	*	*	* km/h	*	* km/h	*	* km/h
		Lauf 4:	00:04.216	00:02.345	00:26.054	115,94 km/h	00:47.243	103,39 km/h	01:19.858	91,51 km/h