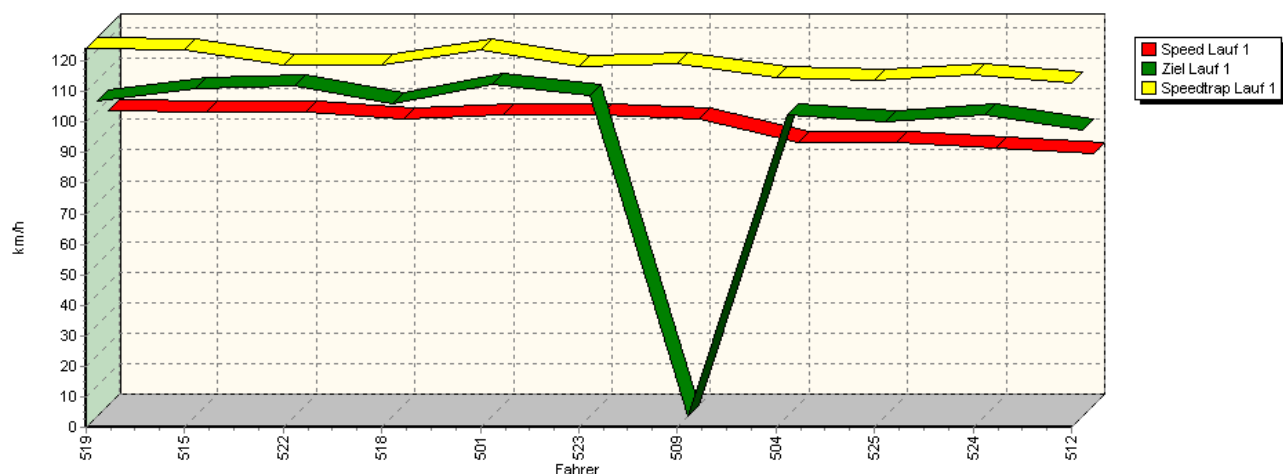
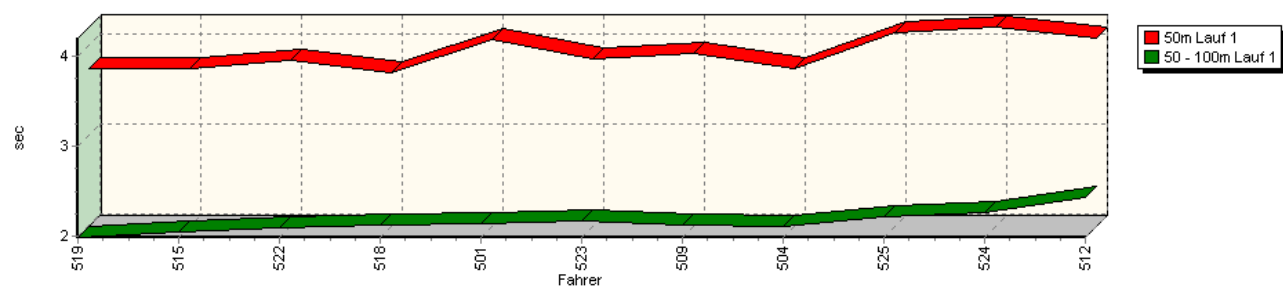


Sektorzeiten & Speeds - Training - Classic-Berg-Pokal NSU-Bergpokal - Klasse 8

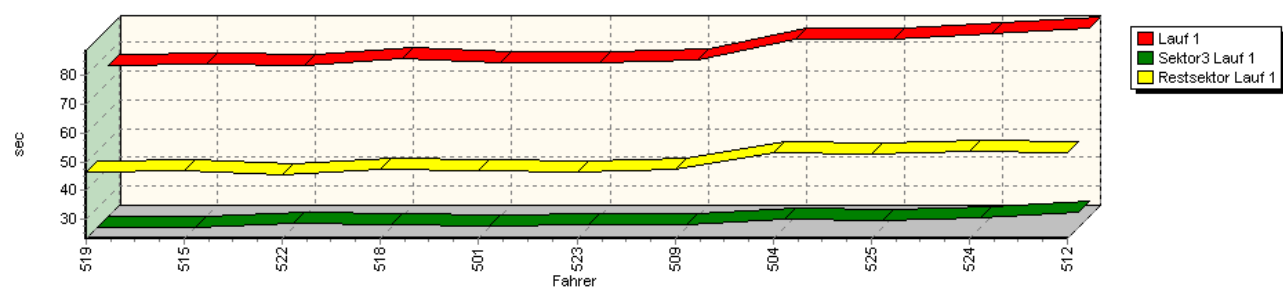
Speed-Diagramm Lauf 1



Sektor-Diagramm (Start) Lauf 1

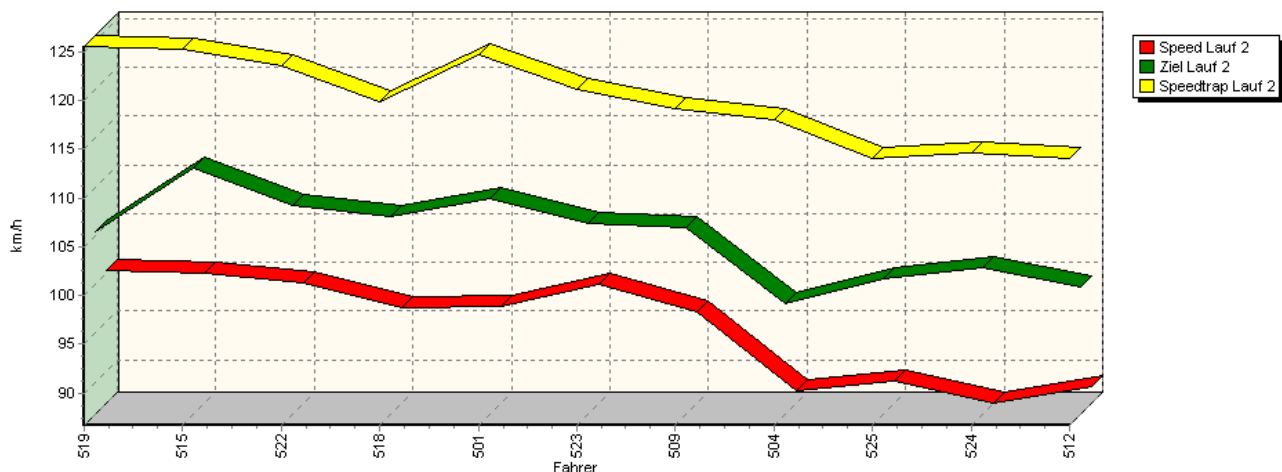


Sektor-Diagramm (Rest) Lauf 1

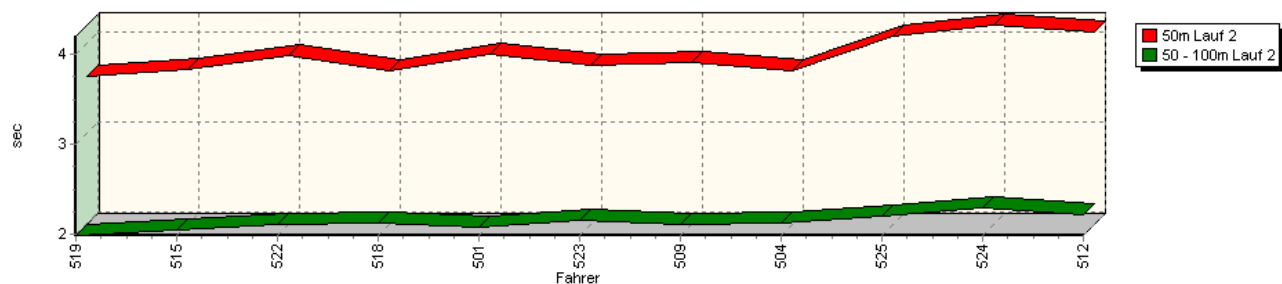


Sektorzeiten & Speeds - Training - Classic-Berg-Pokal NSU-Bergpokal - Klasse 8

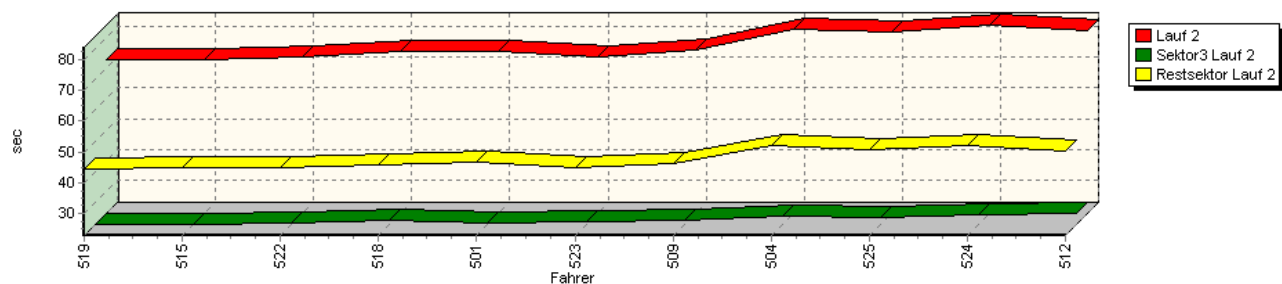
Speed-Diagramm Lauf 2



Sektor-Diagramm (Start) Lauf 2

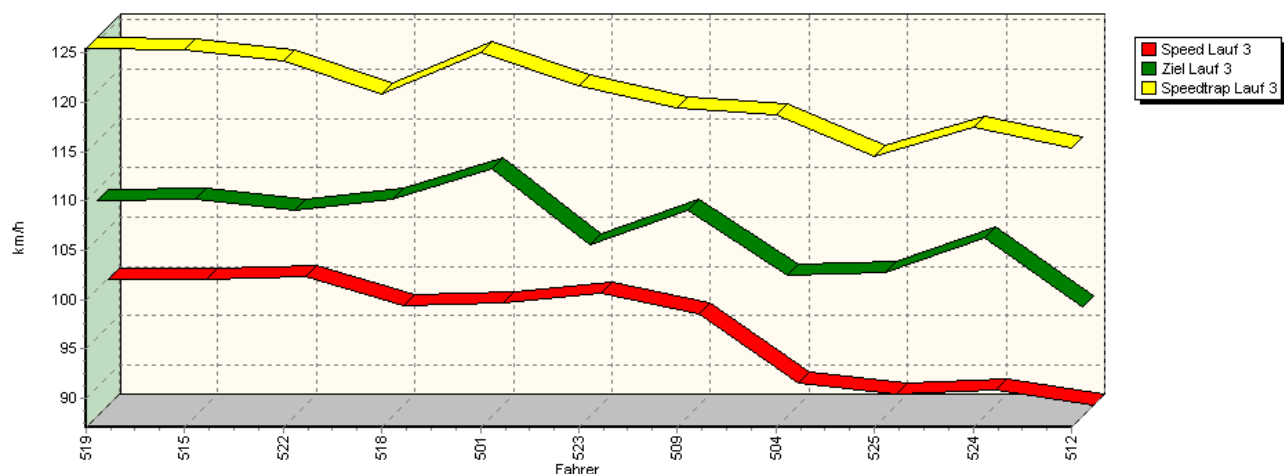


Sektor-Diagramm (Rest) Lauf 2

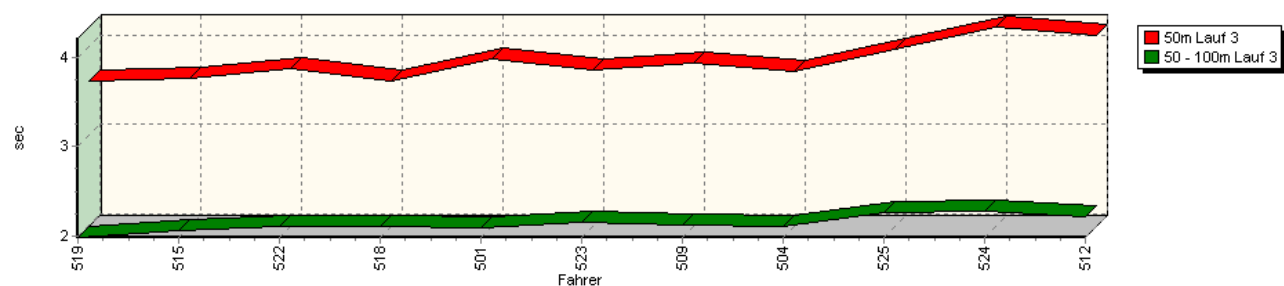


Sektorzeiten & Speeds - Training - Classic-Berg-Pokal NSU-Bergpokal - Klasse 8

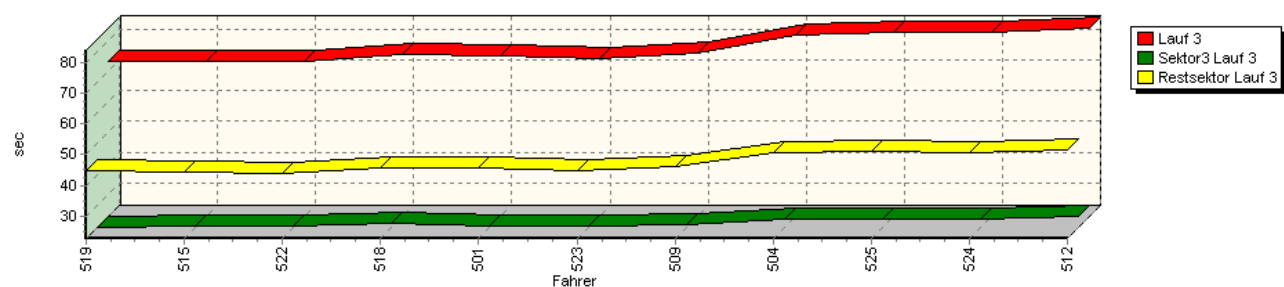
Speed-Diagramm Lauf 3



Sektor-Diagramm (Start) Lauf 3

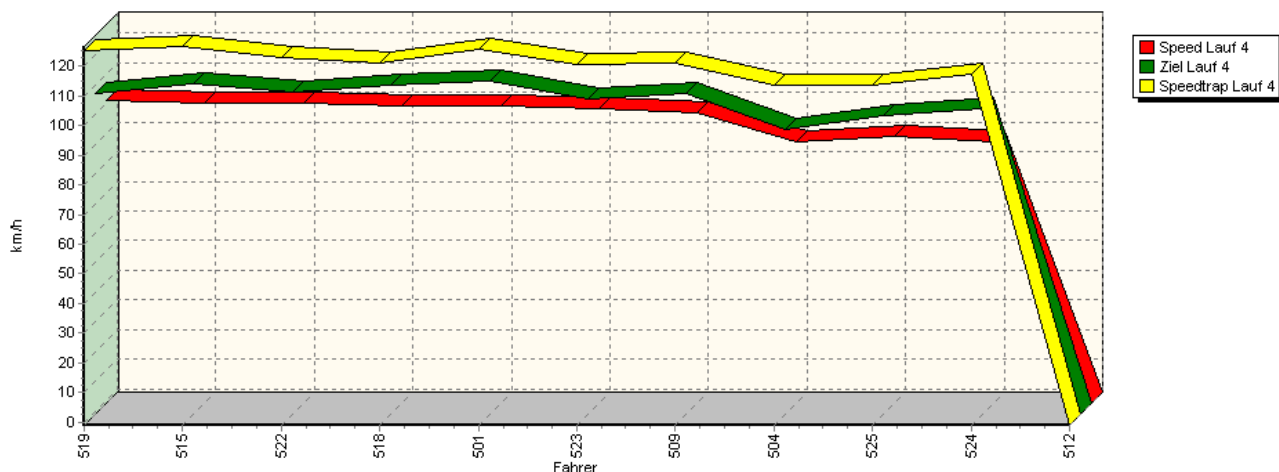


Sektor-Diagramm (Rest) Lauf 3

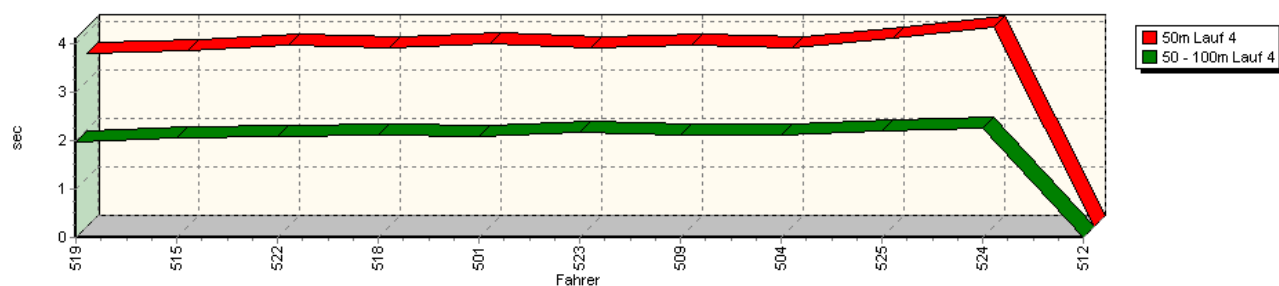


Sektorzeiten & Speeds - Training - Classic-Berg-Pokal NSU-Bergpokal - Klasse 8

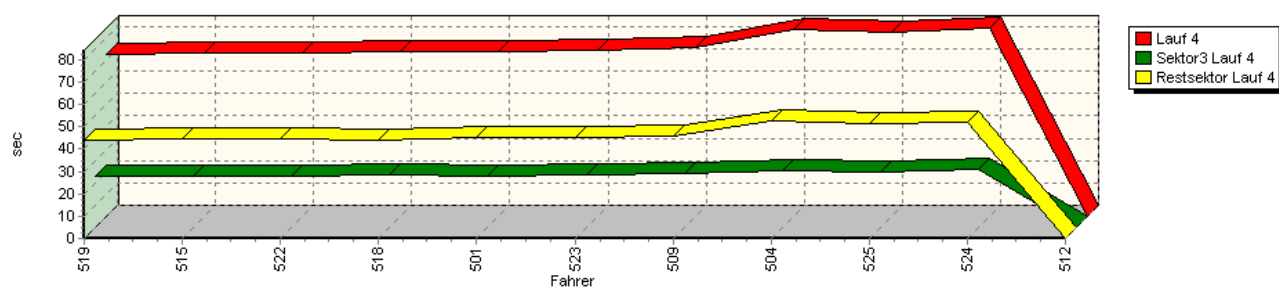
Speed-Diagramm Lauf 4



Sektor-Diagramm (Start) Lauf 4



Sektor-Diagramm (Rest) Lauf 4



Rg.	Nr.	Sektor 1 (50m)	Sektor 2 (50-100m)	Sektor 3	Speed Trap	Sektor 4	Speed (Ziel)	Laufzeit	Speed (Lauf)	
1	519	DAVIDOVIC Jörg		NSU TT Davidovic						
		Lauf 1:	00:03.739	00:01.989	00:23.422	124,19 km/h	00:46.592	103,39 km/h	01:15.742	96,49 km/h
		Lauf 2:	00:03.630	00:01.990	00:22.712	125,54 km/h	00:44.544	105,41 km/h	01:12.876	100,28 km/h
		Lauf 3:	00:03.613	00:01.982	00:22.751	125,45 km/h	00:44.826	108,88 km/h	01:13.172	99,87 km/h
		Lauf 4:	00:03.581	00:01.984	00:22.664	125,35 km/h	00:44.176	107,20 km/h	01:12.405	100,93 km/h



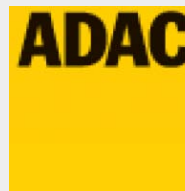
44. Osnabrücker ADAC Bergrennen

13. und 14. August 2011

Deutsche Bergmeisterschaft 2011

DMSB Bergpokal für Tourenwagen und Rennsportfahrzeuge

DMSB Classic-Berg-Pokal - KW Gruppe H Berg-Cup



Sektorzeiten & Speeds - Training - Classic-Berg-Pokal NSU-Bergpokal - Klasse 8

Rg.	Nr.		Sektor 1 (50m)	Sektor 2 (50-100m)	Sektor 3	Speed Trap	Sektor 4	Speed (Ziel)	Laufzeit	Speed (Lauf)
2	515	SCHINDLER Uwe		NSU KWR						
		Lauf 1:	00:03.737	00:02.057	00:23.518	123,72 km/h	00:46.801	107,45 km/h	01:16.113	96,02 km/h
		Lauf 2:	00:03.709	00:02.056	00:22.541	125,24 km/h	00:44.748	111,87 km/h	01:13.054	100,04 km/h
		Lauf 3:	00:03.632	00:02.067	00:23.102	125,36 km/h	00:44.382	109,11 km/h	01:13.183	99,86 km/h
		Lauf 4:	00:03.615	00:02.049	00:22.787	126,59 km/h	00:44.526	110,39 km/h	01:12.977	100,14 km/h
3	522	KRYSTOFIAK Thomas		NSU 1200C KWR						
		Lauf 1:	00:03.830	00:02.103	00:24.674	118,86 km/h	00:45.357	108,50 km/h	01:15.964	96,20 km/h
		Lauf 2:	00:03.863	00:02.111	00:22.947	123,61 km/h	00:44.884	108,17 km/h	01:13.805	99,02 km/h
		Lauf 3:	00:03.749	00:02.104	00:23.138	124,18 km/h	00:44.058	107,96 km/h	01:13.049	100,04 km/h
		Lauf 4:	00:03.729	00:02.094	00:22.816	123,03 km/h	00:44.382	107,39 km/h	01:13.021	100,08 km/h
4	518	HÖLLERICH Nicola		NSU TT						
		Lauf 1:	00:03.695	00:02.125	00:24.563	118,74 km/h	00:47.618	102,53 km/h	01:18.001	93,69 km/h
		Lauf 2:	00:03.698	00:02.124	00:24.006	119,86 km/h	00:45.873	106,98 km/h	01:15.701	96,54 km/h
		Lauf 3:	00:03.613	00:02.108	00:23.982	120,79 km/h	00:45.543	108,99 km/h	01:15.246	97,12 km/h
		Lauf 4:	00:03.676	00:02.125	00:23.769	121,04 km/h	00:44.031	109,60 km/h	01:13.601	99,29 km/h
5	501	STEINERT Karsten		NSU						
		Lauf 1:	00:04.067	00:02.150	00:23.939	123,58 km/h	00:46.807	108,95 km/h	01:16.963	94,96 km/h
		Lauf 2:	00:03.880	00:02.086	00:23.136	124,73 km/h	00:46.518	108,80 km/h	01:15.620	96,64 km/h
		Lauf 3:	00:03.854	00:02.094	00:23.222	125,09 km/h	00:45.819	112,20 km/h	01:14.989	97,45 km/h
		Lauf 4:	00:03.774	00:02.075	00:22.769	125,72 km/h	00:45.157	111,40 km/h	01:13.775	99,06 km/h
6	523	KLEINEBERG Frank		NSU 1000						
		Lauf 1:	00:03.847	00:02.167	00:24.248	118,52 km/h	00:46.650	105,15 km/h	01:16.912	95,02 km/h
		Lauf 2:	00:03.746	00:02.155	00:23.365	121,12 km/h	00:44.624	106,20 km/h	01:13.890	98,90 km/h
		Lauf 3:	00:03.731	00:02.160	00:23.401	121,68 km/h	00:44.926	104,48 km/h	01:14.218	98,47 km/h
		Lauf 4:	00:03.697	00:02.165	00:23.687	120,66 km/h	00:44.867	105,05 km/h	01:14.416	98,20 km/h
7	509	MEURER Karlheinz		NSU TT						
		Lauf 1:	00:03.905	00:02.126	00:24.389	119,21 km/h	00:47.423	0,00 km/h	01:17.843	93,88 km/h
		Lauf 2:	00:03.788	00:02.120	00:23.902	119,14 km/h	00:46.232	105,87 km/h	01:16.042	96,10 km/h
		Lauf 3:	00:03.803	00:02.116	00:23.758	119,39 km/h	00:46.199	107,91 km/h	01:15.876	96,32 km/h
		Lauf 4:	00:03.745	00:02.123	00:24.036	121,04 km/h	00:45.710	107,13 km/h	01:15.614	96,65 km/h
8	504	SZOTT Roman		NSU TT						
		Lauf 1:	00:03.741	00:02.117	00:26.207	114,82 km/h	00:52.973	98,76 km/h	01:25.038	85,94 km/h
		Lauf 2:	00:03.691	00:02.125	00:25.433	118,05 km/h	00:51.863	98,06 km/h	01:23.112	87,93 km/h
		Lauf 3:	00:03.720	00:02.107	00:25.360	118,67 km/h	00:50.630	101,31 km/h	01:21.817	89,32 km/h
		Lauf 4:	00:03.682	00:02.099	00:25.576	113,76 km/h	00:52.463	94,81 km/h	01:23.820	87,19 km/h
9	525	MARX Wolfgang		NSU TT Davidovic						
		Lauf 1:	00:04.144	00:02.225	00:25.634	113,79 km/h	00:52.722	96,51 km/h	01:24.725	86,26 km/h
		Lauf 2:	00:04.080	00:02.202	00:24.938	114,05 km/h	00:50.879	100,64 km/h	01:22.099	89,02 km/h
		Lauf 3:	00:03.963	00:02.267	00:25.444	114,51 km/h	00:51.132	101,68 km/h	01:22.806	88,25 km/h
		Lauf 4:	00:03.876	00:02.187	00:25.039	113,66 km/h	00:51.189	99,76 km/h	01:22.291	88,81 km/h
10	524	SCHWALBE Wolfgang		NSU TT						
		Lauf 1:	00:04.200	00:02.264	00:26.700	115,55 km/h	00:53.576	98,91 km/h	01:26.740	84,25 km/h
		Lauf 2:	00:04.196	00:02.297	00:25.880	114,57 km/h	00:51.918	101,77 km/h	01:24.291	86,70 km/h
		Lauf 3:	00:04.212	00:02.272	00:25.232	117,41 km/h	00:50.798	105,16 km/h	01:22.514	88,57 km/h
		Lauf 4:	00:04.111	00:02.242	00:26.033	117,05 km/h	00:51.777	101,69 km/h	01:24.163	86,83 km/h



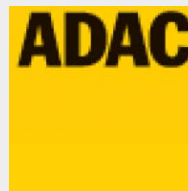
44. Osnabrücker ADAC Bergrennen

13. und 14. August 2011

Deutsche Bergmeisterschaft 2011

DMSB Bergpokal für Tourenwagen und Rennsportfahrzeuge

DMSB Classic-Berg-Pokal - KW Gruppe H Berg-Cup



Sektorzeiten & Speeds - Training - Classic-Berg-Pokal NSU-Bergpokal - Klasse 8

Rg.	Nr.		Sektor 1 (50m)	Sektor 2 (50-100m)	Sektor 3	Speed Trap	Sektor 4	Speed (Ziel)	Laufzeit	Speed (Lauf)
11	512	NEUNER Bernhard		NSU TT						
		Lauf 1:	00:04.074	00:02.440	00:28.834	112,66 km/h	00:53.418	93,95 km/h	01:28.766	82,33 km/h
		Lauf 2:	00:04.121	00:02.213	00:25.990	114,09 km/h	00:50.356	99,68 km/h	01:22.680	88,39 km/h
		Lauf 3:	00:04.124	00:02.220	00:26.270	115,31 km/h	00:51.324	98,10 km/h	01:23.938	87,06 km/h
		Lauf 4:	*	*	*	* km/h	*	* km/h	*	* km/h