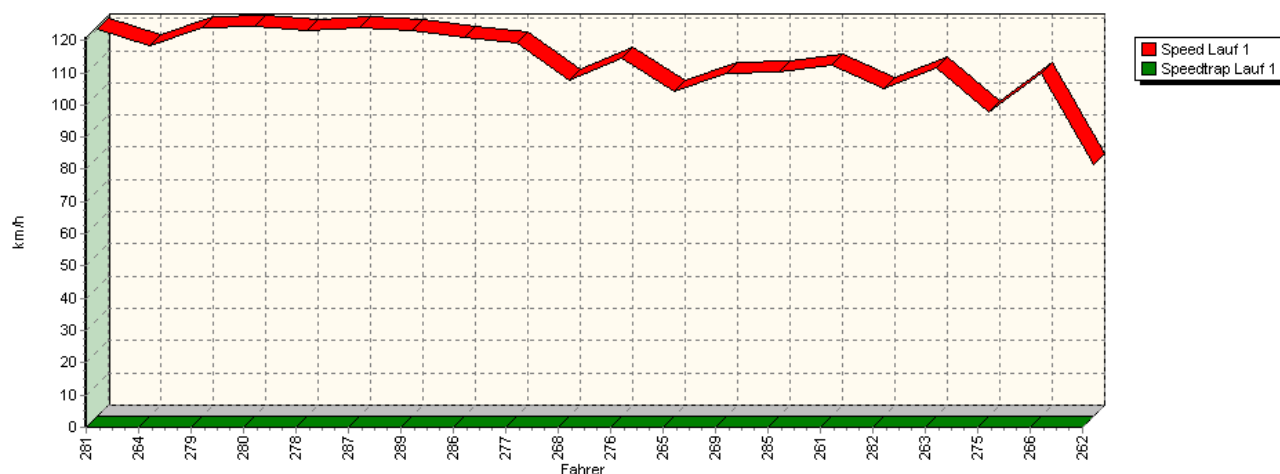
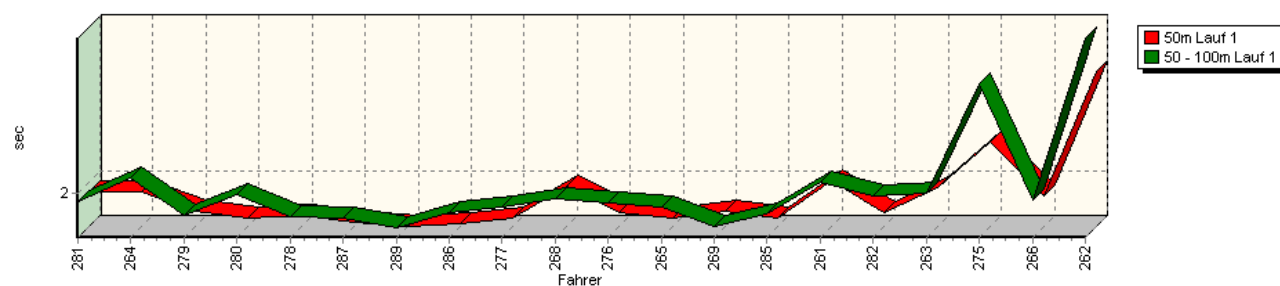


## Sektorzeiten & Speeds - Gruppe H (DMSB, OSK) bis 1300 ccm - Klasse 19

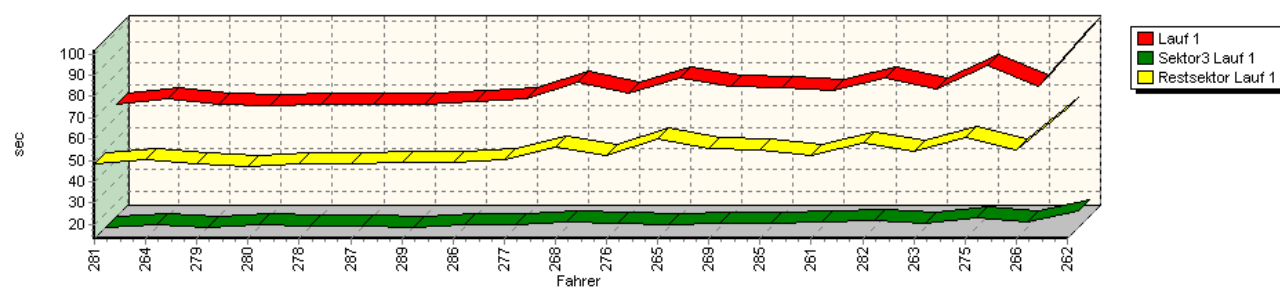
Speed-Diagramm Lauf 1



Sektor-Diagramm (Start) Lauf 1

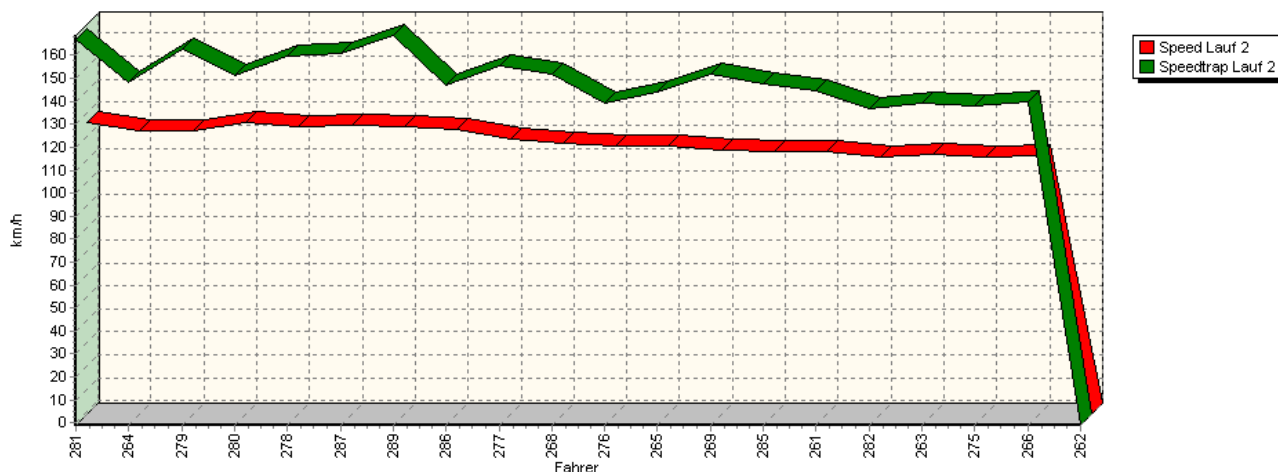


Sektor-Diagramm (Rest) Lauf 1

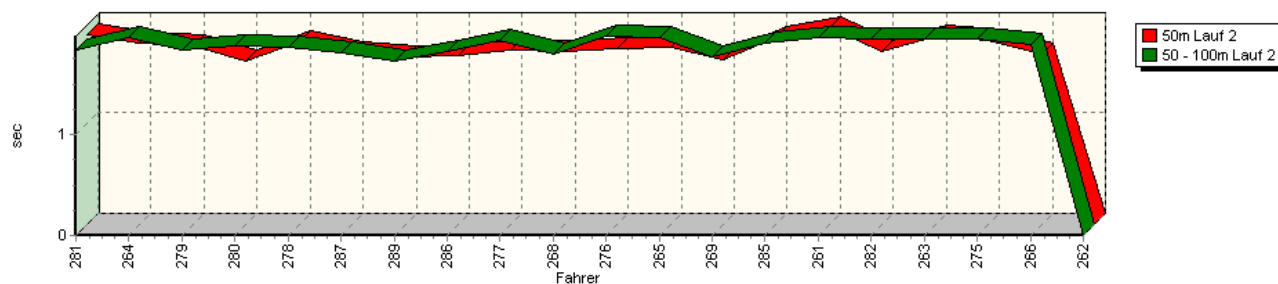


## Sektorzeiten & Speeds - Gruppe H (DMSB, OSK) bis 1300 ccm - Klasse 19

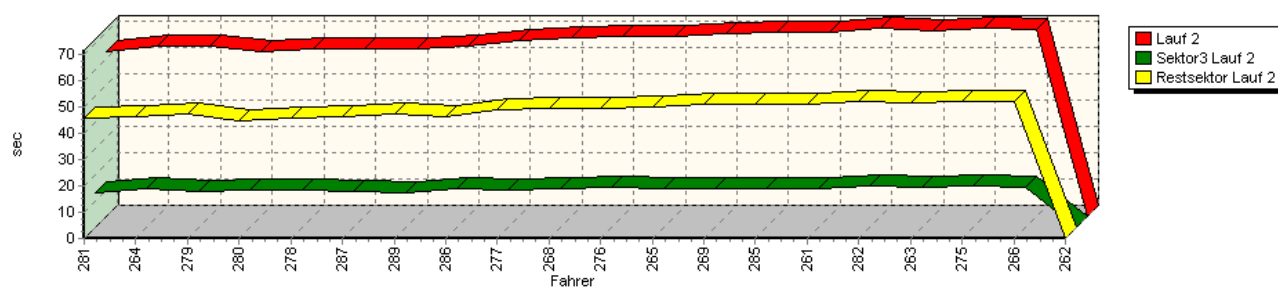
Speed-Diagramm Lauf 2



Sektor-Diagramm (Start) Lauf 2

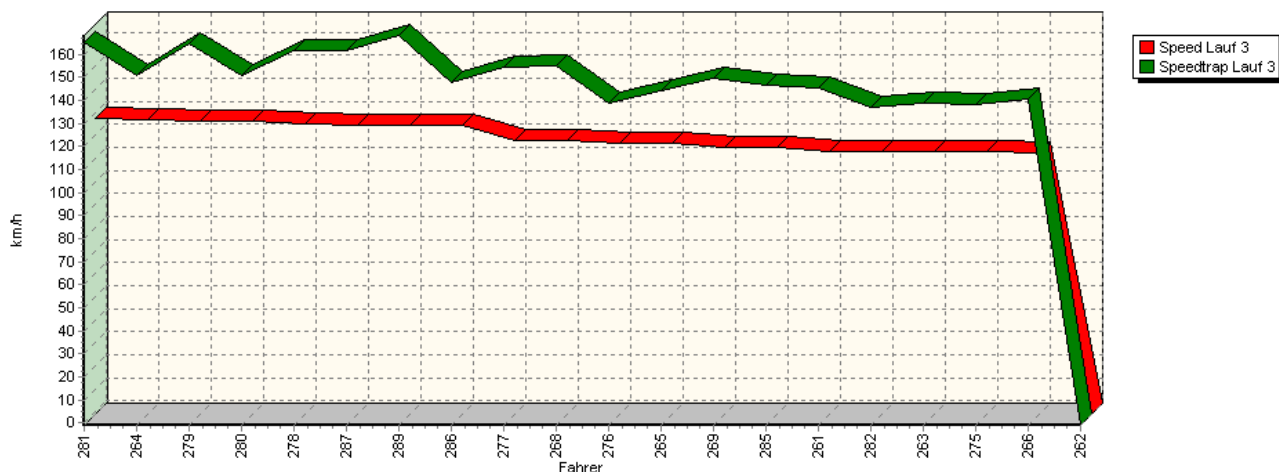


Sektor-Diagramm (Rest) Lauf 2

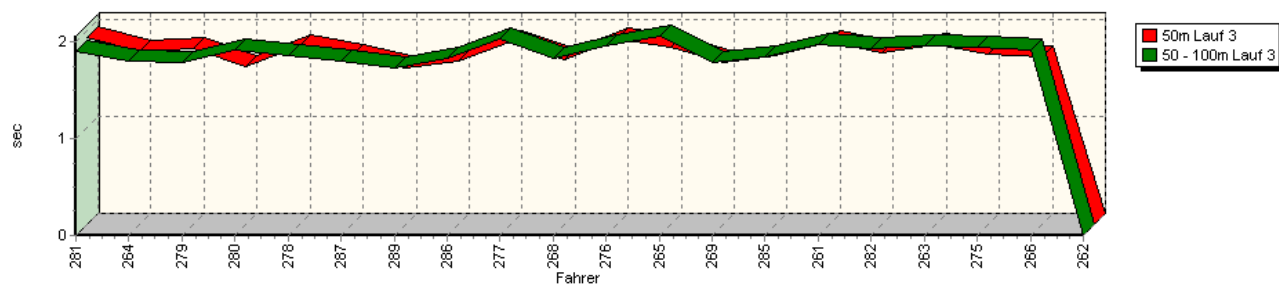


## Sektorzeiten & Speeds - Gruppe H (DMSB, OSK) bis 1300 ccm - Klasse 19

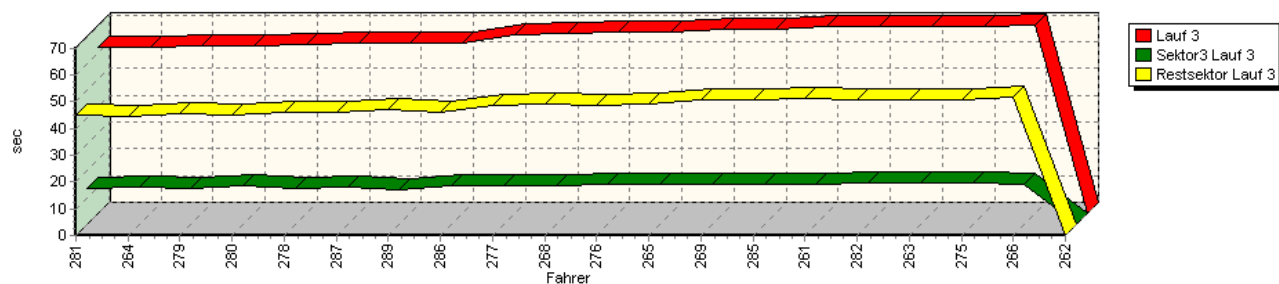
Speed-Diagramm Lauf 3



Sektor-Diagramm (Start) Lauf 3



Sektor-Diagramm (Rest) Lauf 3



Rg.	Nr.	Sektor 1 (15m)	Sektor 2 (15-50m)	Sektor 3	Speed Trap	Sektor 4	Laufzeit	Speed (Lauf)	
1	281	<b>GEHRIG Jürgen</b>		VW Polo 16V					
		Lauf 1:	00:01.939	00:01.947	00:13.649	0,00 km/h	00:48.368	01:05.903	120,18 km/h
		Lauf 2:	00:01.876	00:01.842	00:13.236	167,06 km/h	00:45.874	01:02.828	126,06 km/h
		Lauf 3:	00:01.917	00:01.901	00:13.322	165,15 km/h	00:44.974	01:02.114	127,51 km/h

## Sektorzeiten & Speeds - Gruppe H (DMSB, OSK) bis 1300 ccm - Klasse 19

Rg.	Nr.		Sektor 1 (15m)	Sektor 2 (15-50m)	Sektor 3	Speed Trap	Sektor 4	Laufzeit	Speed (Lauf)
2	264	<b>EBENHÖH Armin</b>		VW Polo					
		Lauf 1:	00:01.941	00:02.091	00:14.606	0,00 km/h	00:50.203	01:08.841	115,05 km/h
		Lauf 2:	00:01.806	00:01.966	00:14.763	148,39 km/h	00:46.279	01:04.814	122,20 km/h
		Lauf 3:	00:01.777	00:01.790	00:14.095	150,99 km/h	00:44.740	01:02.402	126,92 km/h
3	279	<b>MOSER Gerhard</b>		VW Polo II 16V					
		Lauf 1:	00:01.833	00:01.867	00:13.584	0,00 km/h	00:48.522	01:05.806	120,35 km/h
		Lauf 2:	00:01.774	00:01.836	00:13.543	162,68 km/h	00:47.501	01:04.654	122,50 km/h
		Lauf 3:	00:01.810	00:01.787	00:13.505	164,50 km/h	00:45.513	01:02.615	126,49 km/h
4	280	<b>SPÖRI Markus</b>		Suzuki Swift Gti 16V 4WD					
		Lauf 1:	00:01.789	00:01.994	00:14.575	0,00 km/h	00:47.117	01:05.475	120,96 km/h
		Lauf 2:	00:01.625	00:01.882	00:14.261	151,01 km/h	00:44.955	01:02.723	126,27 km/h
		Lauf 3:	00:01.631	00:01.906	00:14.290	150,52 km/h	00:44.827	01:02.654	126,41 km/h
5	278	<b>STELBERG André</b>		VW Schneider Polo I 16V					
		Lauf 1:	00:01.801	00:01.864	00:13.790	0,00 km/h	00:48.669	01:06.124	119,77 km/h
		Lauf 2:	00:01.815	00:01.871	00:14.135	159,46 km/h	00:45.918	01:03.739	124,26 km/h
		Lauf 3:	00:01.834	00:01.859	00:13.594	161,68 km/h	00:45.990	01:03.277	125,17 km/h
6	287	<b>GLAS Wolfgang</b>		VW Polo1 Minichberger 16V					
		Lauf 1:	00:01.766	00:01.852	00:13.853	0,00 km/h	00:48.254	01:05.725	120,50 km/h
		Lauf 2:	00:01.704	00:01.815	00:13.775	160,81 km/h	00:46.262	01:03.556	124,62 km/h
		Lauf 3:	00:01.737	00:01.798	00:13.810	161,71 km/h	00:46.202	01:03.547	124,63 km/h
7	289	<b>KONRAD Manfred</b>		VW Corrado					
		Lauf 1:	00:01.740	00:01.794	00:13.373	0,00 km/h	00:49.198	01:06.105	119,81 km/h
		Lauf 2:	00:01.661	00:01.729	00:13.108	168,70 km/h	00:47.256	01:03.754	124,23 km/h
		Lauf 3:	00:01.616	00:01.722	00:13.169	168,22 km/h	00:47.239	01:03.746	124,24 km/h
8	286	<b>GÖTZL Helmut</b>		VW EMP Polo 8V					
		Lauf 1:	00:01.753	00:01.883	00:14.805	0,00 km/h	00:49.044	01:07.485	117,36 km/h
		Lauf 2:	00:01.679	00:01.823	00:14.646	147,21 km/h	00:46.417	01:04.565	122,67 km/h
		Lauf 3:	00:01.687	00:01.831	00:14.409	148,02 km/h	00:45.865	01:03.792	124,15 km/h
9	277	<b>VÖLKER Jörg</b>		Suzuki Swift Gti 16V					
		Lauf 1:	00:01.785	00:01.922	00:14.479	0,00 km/h	00:50.157	01:08.343	115,89 km/h
		Lauf 2:	00:01.726	00:01.939	00:14.231	155,43 km/h	00:48.962	01:06.858	118,46 km/h
		Lauf 3:	00:01.874	00:02.020	00:14.277	154,64 km/h	00:48.887	01:07.058	118,11 km/h
10	268	<b>WIEBE Hans-Peter</b>		Renault R8 Gordini					
		Lauf 1:	00:01.974	00:01.967	00:16.003	0,00 km/h	00:56.182	01:16.126	104,04 km/h
		Lauf 2:	00:01.716	00:01.803	00:14.658	151,71 km/h	00:49.607	01:07.784	116,84 km/h
		Lauf 3:	00:01.701	00:01.826	00:14.707	155,29 km/h	00:49.158	01:07.392	117,52 km/h
11	276	<b>ABB Nils</b>		VW Schneider Polo 8V					
		Lauf 1:	00:01.820	00:01.942	00:15.444	0,00 km/h	00:52.117	01:11.323	111,04 km/h
		Lauf 2:	00:01.750	00:01.978	00:15.214	139,30 km/h	00:49.340	01:08.282	115,99 km/h
		Lauf 3:	00:01.907	00:01.955	00:15.226	139,10 km/h	00:48.777	01:07.865	116,70 km/h
12	265	<b>BAUER Christoph</b>		VW Polo 86C 8V					
		Lauf 1:	00:01.787	00:01.921	00:14.934	0,00 km/h	00:59.847	01:18.489	100,91 km/h
		Lauf 2:	00:01.756	00:01.966	00:14.858	143,83 km/h	00:49.796	01:08.376	115,83 km/h
		Lauf 3:	00:01.817	00:02.052	00:14.922	144,00 km/h	00:49.122	01:07.913	116,62 km/h
13	269	<b>KOOB Franz</b>		Fiat X1/9 16V					
		Lauf 1:	00:01.829	00:01.803	00:15.228	0,00 km/h	00:55.456	01:14.316	106,57 km/h
		Lauf 2:	00:01.636	00:01.776	00:14.780	151,66 km/h	00:51.250	01:09.442	114,05 km/h
		Lauf 3:	00:01.674	00:01.777	00:15.017	149,69 km/h	00:50.552	01:09.020	114,75 km/h

## Sektorzeiten & Speeds - Gruppe H (DMSB, OSK) bis 1300 ccm - Klasse 19

Rg.	Nr.		Sektor 1 (15m)	Sektor 2 (15-50m)	Sektor 3	Speed Trap	Sektor 4	Laufzeit	Speed (Lauf)
14	285	<b>RÜGER Marc-Peter</b>		Audi 50 8V					
		Lauf 1:	00:01.785	00:01.880	00:15.622	0,00 km/h	00:54.748	01:14.035	106,98 km/h
		Lauf 2:	00:01.848	00:01.908	00:14.960	147,74 km/h	00:51.266	01:09.982	113,17 km/h
		Lauf 3:	00:01.742	00:01.839	00:14.815	146,83 km/h	00:50.692	01:09.088	114,64 km/h
15	261	<b>MÖRZL Christian</b>		Talbot Samba Rallye					
		Lauf 1:	00:02.011	00:02.061	00:16.004	0,00 km/h	00:52.564	01:12.640	109,03 km/h
		Lauf 2:	00:01.951	00:01.968	00:14.898	144,65 km/h	00:51.041	01:09.858	113,37 km/h
		Lauf 3:	00:01.877	00:01.962	00:14.989	145,62 km/h	00:51.111	01:09.939	113,24 km/h
16	282	<b>VITT Holger</b>		JTM Polo Twist 8V					
		Lauf 1:	00:01.824	00:01.981	00:16.377	0,00 km/h	00:57.886	01:18.068	101,45 km/h
		Lauf 2:	00:01.716	00:01.946	00:15.605	136,81 km/h	00:52.230	01:11.497	110,77 km/h
		Lauf 3:	00:01.760	00:01.925	00:15.331	137,26 km/h	00:50.932	01:09.948	113,23 km/h
17	263	<b>TRIEBSTEIN Christian</b>		VW Polo 1 8V					
		Lauf 1:	00:01.965	00:01.998	00:15.259	0,00 km/h	00:54.143	01:13.365	107,95 km/h
		Lauf 2:	00:01.862	00:01.947	00:15.278	139,19 km/h	00:51.388	01:10.475	112,38 km/h
		Lauf 3:	00:01.852	00:01.954	00:15.282	138,84 km/h	00:51.015	01:10.103	112,98 km/h
18	275	<b>HÖRNIG Christof</b>		Polo 8V					
		Lauf 1:	00:02.230	00:02.634	00:18.096	0,00 km/h	01:00.903	01:23.863	94,44 km/h
		Lauf 2:	00:01.826	00:01.952	00:15.619	137,90 km/h	00:52.192	01:11.589	110,63 km/h
		Lauf 3:	00:01.755	00:01.933	00:15.656	138,43 km/h	00:50.812	01:10.156	112,89 km/h
19	266	<b>RUMPEL Rupert</b>		Simca Rallye					
		Lauf 1:	00:01.918	00:01.955	00:15.735	0,00 km/h	00:54.932	01:14.540	106,25 km/h
		Lauf 2:	00:01.694	00:01.893	00:15.270	140,08 km/h	00:52.167	01:11.024	111,51 km/h
		Lauf 3:	00:01.725	00:01.903	00:15.269	140,74 km/h	00:51.543	01:10.440	112,44 km/h
20	262	<b>MELZOW Thomas</b>		Fiat 127 A					
		Lauf 1:	00:02.649	00:02.905	00:21.433	0,00 km/h	01:14.668	01:41.655	77,91 km/h
		Lauf 2:	*	*	*	* km/h	*	*	* km/h
		Lauf 3:	*	*	*	* km/h	*	*	* km/h