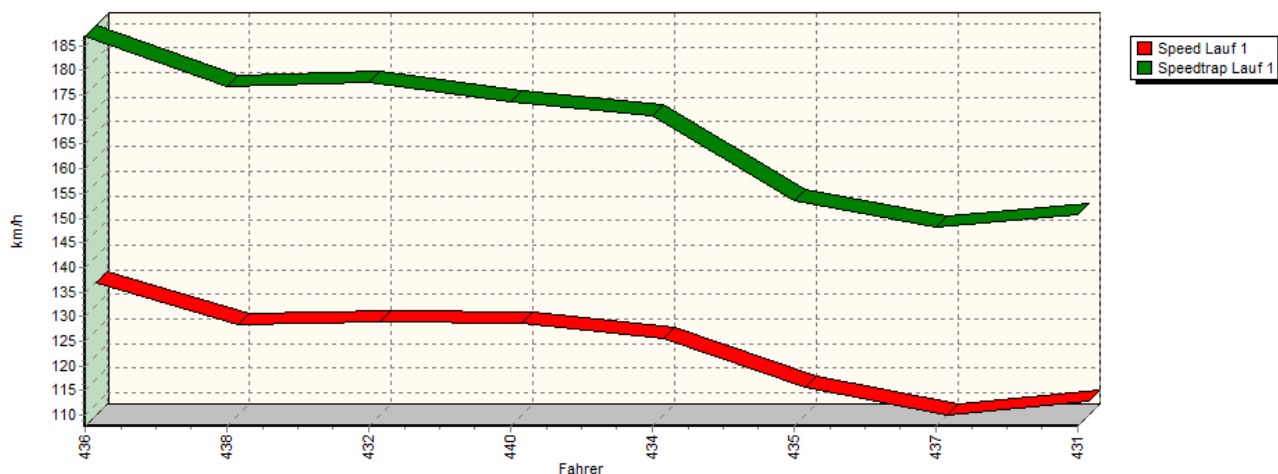
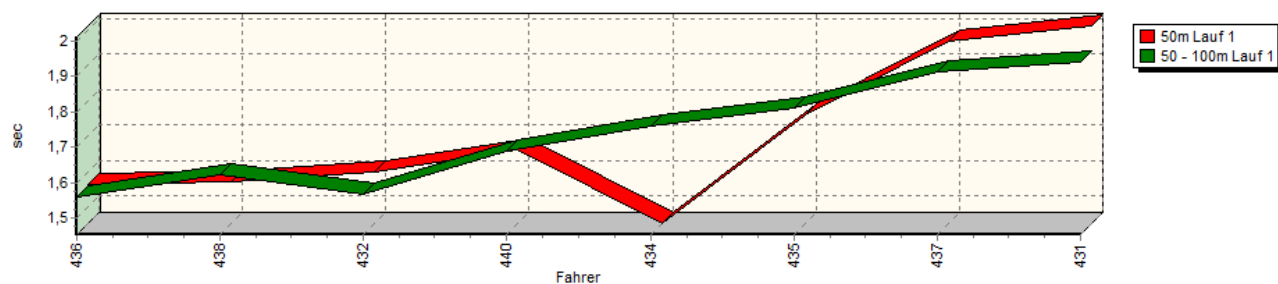


## Sektorzeiten & Speeds - Gruppe H (DMSB, OSK) über 2000 ccm - Klasse 23

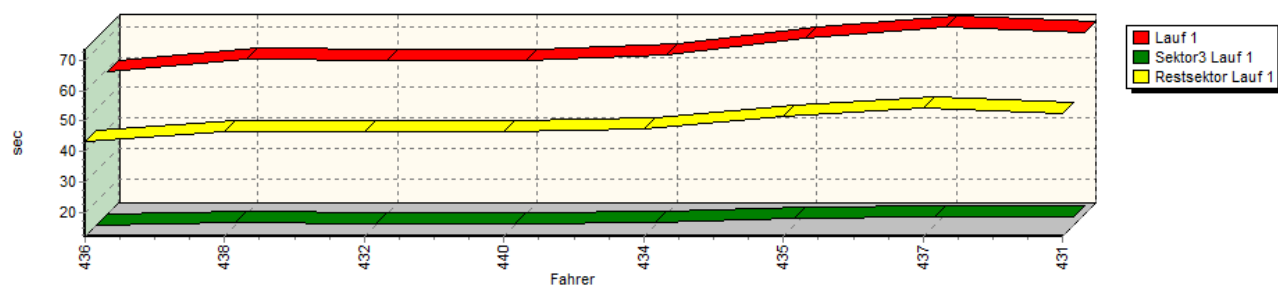
Speed-Diagramm Lauf 1



Sektor-Diagramm (Start) Lauf 1

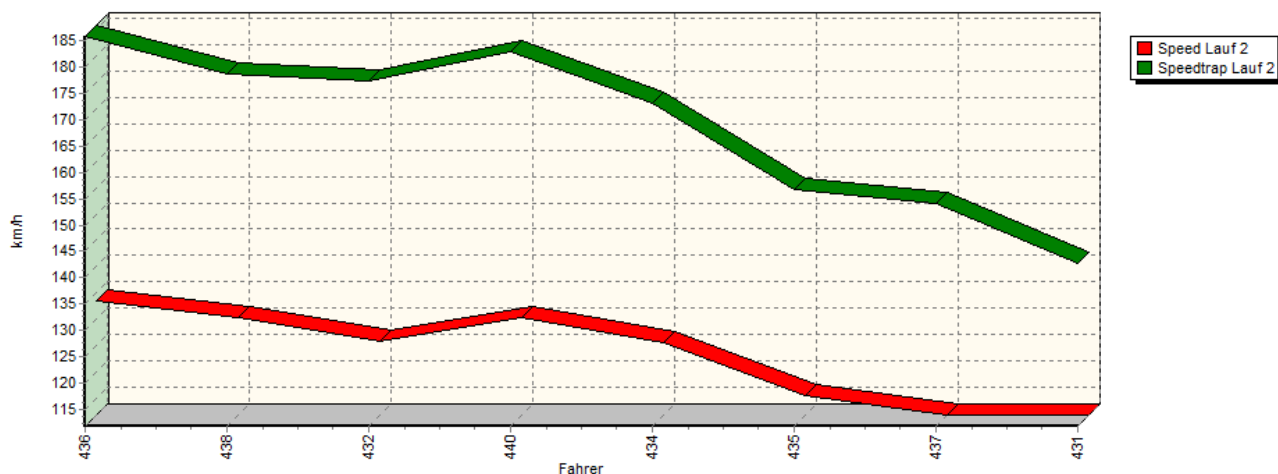


Sektor-Diagramm (Rest) Lauf 1

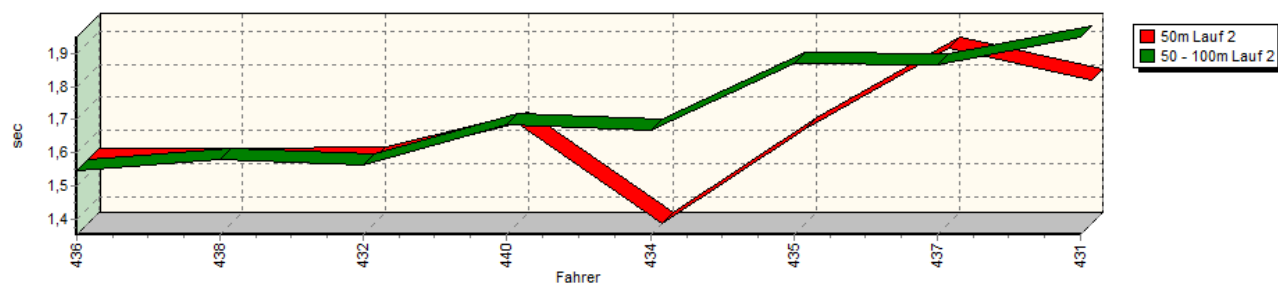


## Sektorzeiten & Speeds - Gruppe H (DMSB, OSK) über 2000 ccm - Klasse 23

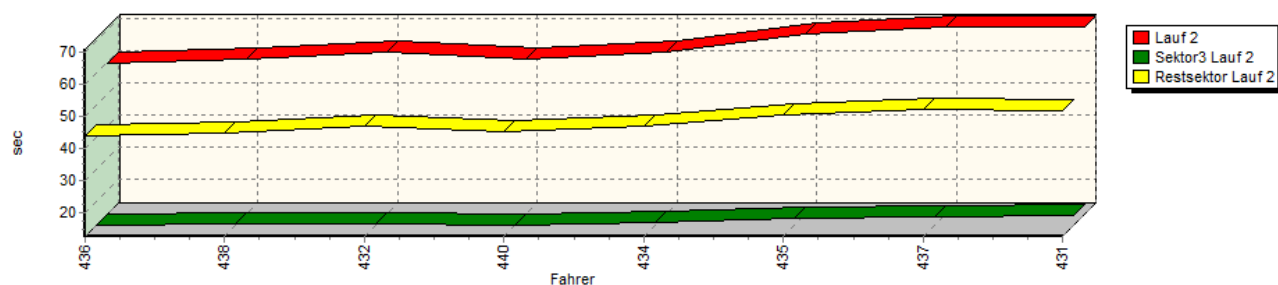
Speed-Diagramm Lauf 2



Sektor-Diagramm (Start) Lauf 2

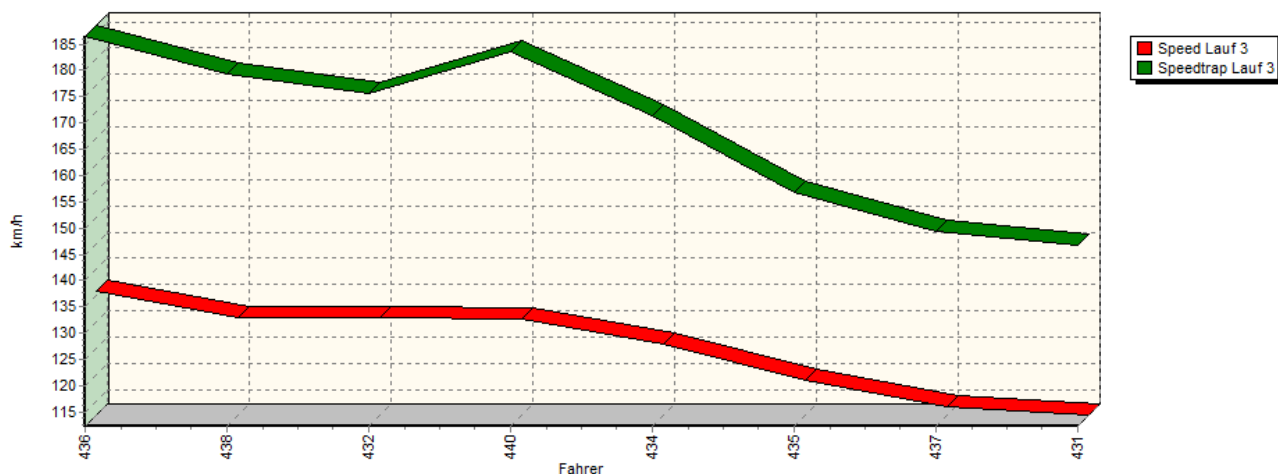


Sektor-Diagramm (Rest) Lauf 2

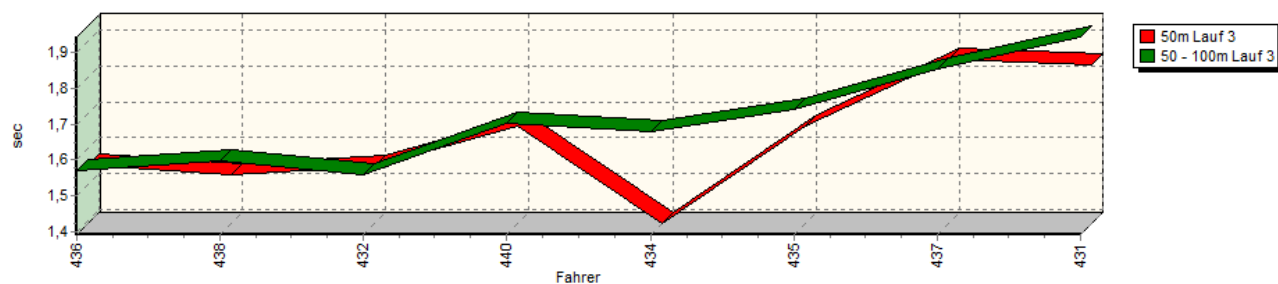


## Sektorzeiten & Speeds - Gruppe H (DMSB, OSK) über 2000 ccm - Klasse 23

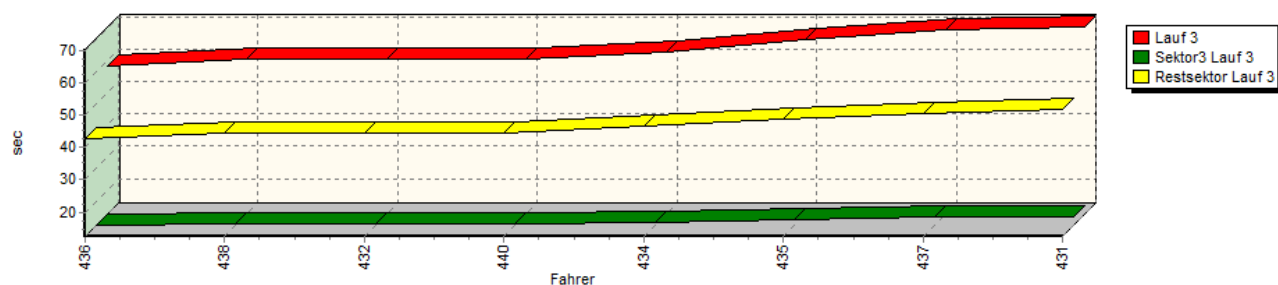
Speed-Diagramm Lauf 3



Sektor-Diagramm (Start) Lauf 3



Sektor-Diagramm (Rest) Lauf 3



Rg.	Nr.		Sektor 1 (15m)	Sektor 2 (15-50m)	Sektor 3	Speed Trap	Sektor 4	Laufzeit	Speed (Lauf)
1	436	<b>KOCH Josef</b>		Opel Kadett C 16V					
		Lauf 1:	00:01.564	00:01.558	00:12.368	186,86 km/h	00:43.371	00:58.861	134,55 km/h
		Lauf 2:	00:01.547	00:01.547	00:12.377	185,69 km/h	00:43.896	00:59.367	133,41 km/h
		Lauf 3:	00:01.554	00:01.570	00:12.429	186,48 km/h	00:42.760	00:58.313	135,82 km/h

## Sektorzeiten & Speeds - Gruppe H (DMSB, OSK) über 2000 ccm - Klasse 23

Rg.	Nr.		Sektor 1 (15m)	Sektor 2 (15-50m)	Sektor 3	Speed Trap	Sektor 4	Laufzeit	Speed (Lauf)
2	438	<b>HAUFF Siegfried</b>		Opel Kadett C 16V					
		Lauf 1:	00:01.573	00:01.623	00:13.072	176,73 km/h	00:46.590	01:02.858	126,00 km/h
		Lauf 2:	00:01.548	00:01.578	00:12.938	178,53 km/h	00:44.709	01:00.773	130,32 km/h
		Lauf 3:	00:01.526	00:01.596	00:13.048	179,37 km/h	00:44.413	01:00.583	130,73 km/h
3	432	<b>BANZ Armin</b>		Opel Kadett C 16V					
		Lauf 1:	00:01.599	00:01.569	00:12.965	177,47 km/h	00:46.363	01:02.496	126,73 km/h
		Lauf 2:	00:01.550	00:01.562	00:12.905	177,14 km/h	00:46.920	01:02.937	125,84 km/h
		Lauf 3:	00:01.550	00:01.557	00:13.053	175,62 km/h	00:44.424	01:00.584	130,73 km/h
4	440	<b>PERMETINGER Bernhard</b>		BMW M3 E30					
		Lauf 1:	00:01.663	00:01.689	00:12.840	173,61 km/h	00:46.413	01:02.605	126,51 km/h
		Lauf 2:	00:01.655	00:01.685	00:12.565	182,79 km/h	00:44.894	01:00.799	130,27 km/h
		Lauf 3:	00:01.664	00:01.701	00:12.685	183,47 km/h	00:44.635	01:00.685	130,51 km/h
5	434	<b>STRUCKMANN Norman</b>		Ford Escort Cosworth					
		Lauf 1:	00:01.454	00:01.760	00:13.387	170,65 km/h	00:47.634	01:04.235	123,30 km/h
		Lauf 2:	00:01.353	00:01.668	00:13.241	173,16 km/h	00:46.773	01:03.035	125,65 km/h
		Lauf 3:	00:01.391	00:01.679	00:13.303	171,28 km/h	00:46.522	01:02.895	125,92 km/h
6	435	<b>NEUHAUSER Michael</b>		BMW M3 E30 DTM					
		Lauf 1:	00:01.759	00:01.810	00:14.760	153,44 km/h	00:51.463	01:09.792	113,48 km/h
		Lauf 2:	00:01.639	00:01.870	00:14.562	156,82 km/h	00:50.423	01:08.494	115,63 km/h
		Lauf 3:	00:01.663	00:01.743	00:14.322	156,81 km/h	00:48.846	01:06.574	118,97 km/h
7	437	<b>OSTERMANN Thomas</b>		BMW E30 Hartge					
		Lauf 1:	00:01.968	00:01.911	00:15.166	148,20 km/h	00:54.440	01:13.485	107,78 km/h
		Lauf 2:	00:01.882	00:01.864	00:14.918	154,11 km/h	00:52.038	01:10.702	112,02 km/h
		Lauf 3:	00:01.850	00:01.854	00:14.973	149,42 km/h	00:50.801	01:09.478	113,99 km/h
8	431	<b>EBERLE Franz</b>		BMW 325 M3					
		Lauf 1:	00:02.011	00:01.939	00:15.057	150,64 km/h	00:52.679	01:11.686	110,48 km/h
		Lauf 2:	00:01.784	00:01.950	00:15.430	142,66 km/h	00:51.586	01:10.750	111,94 km/h
		Lauf 3:	00:01.834	00:01.944	00:15.012	146,85 km/h	00:51.748	01:10.538	112,28 km/h