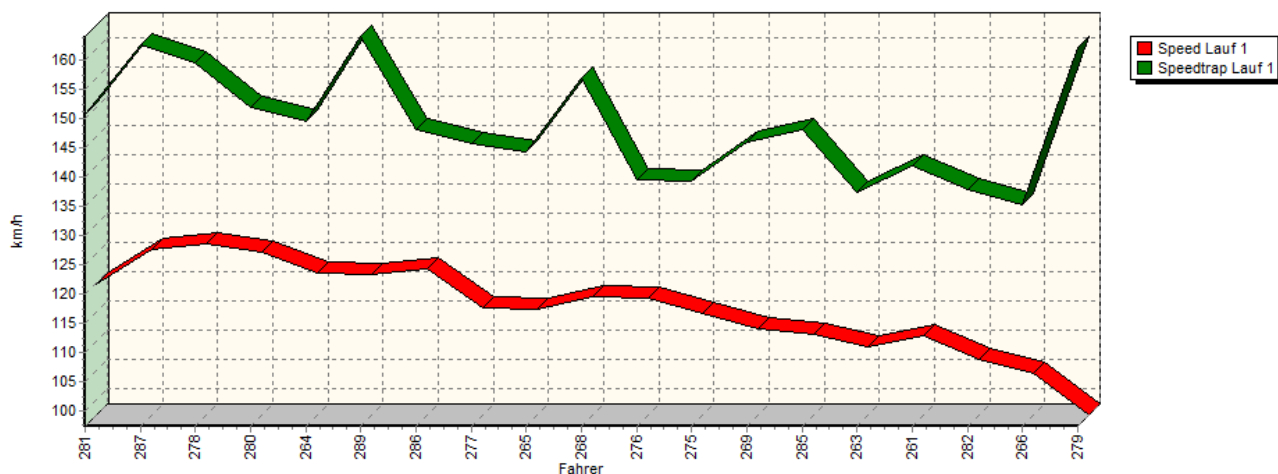
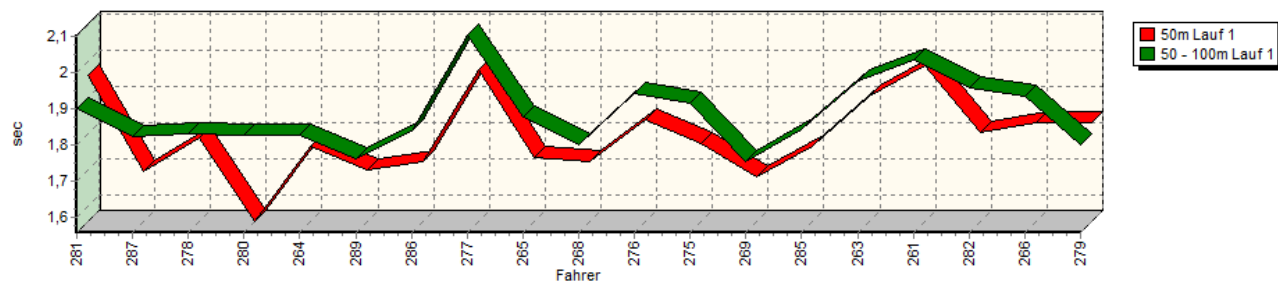


Sektorzeiten & Speeds - Gruppe H (DMSB, OSK) bis 1300 ccm - Klasse 19

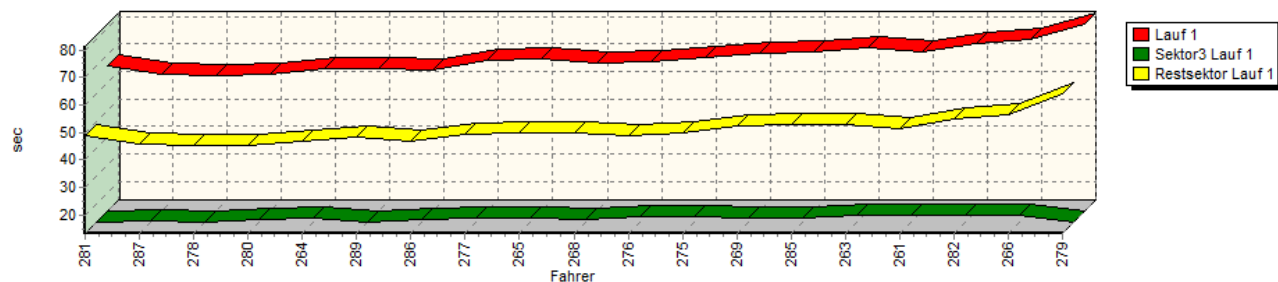
Speed-Diagramm Lauf 1



Sektor-Diagramm (Start) Lauf 1

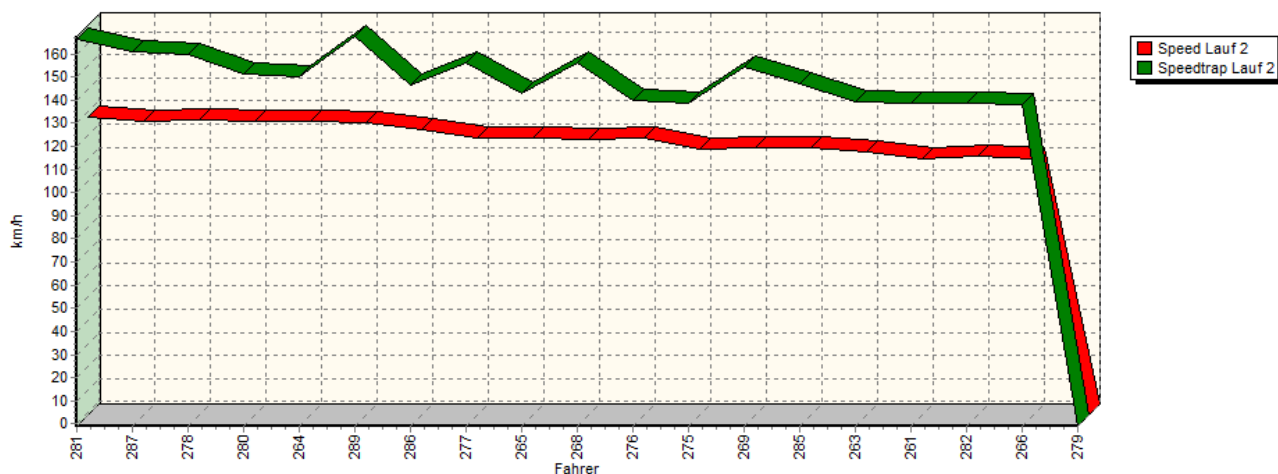


Sektor-Diagramm (Rest) Lauf 1

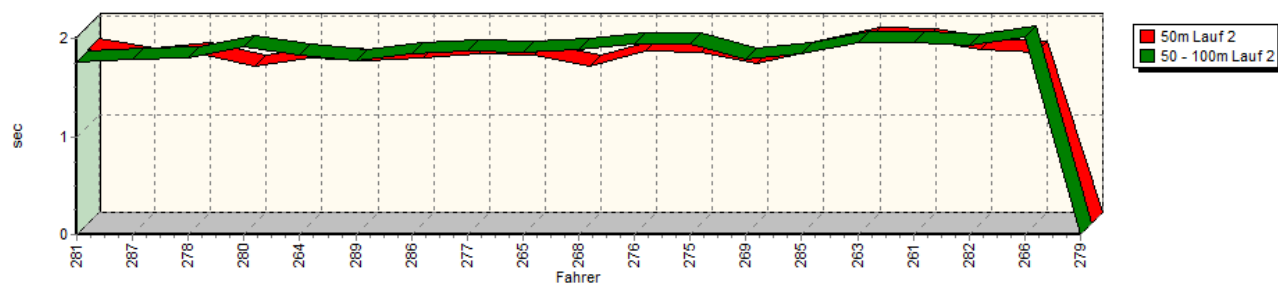


Sektorzeiten & Speeds - Gruppe H (DMSB, OSK) bis 1300 ccm - Klasse 19

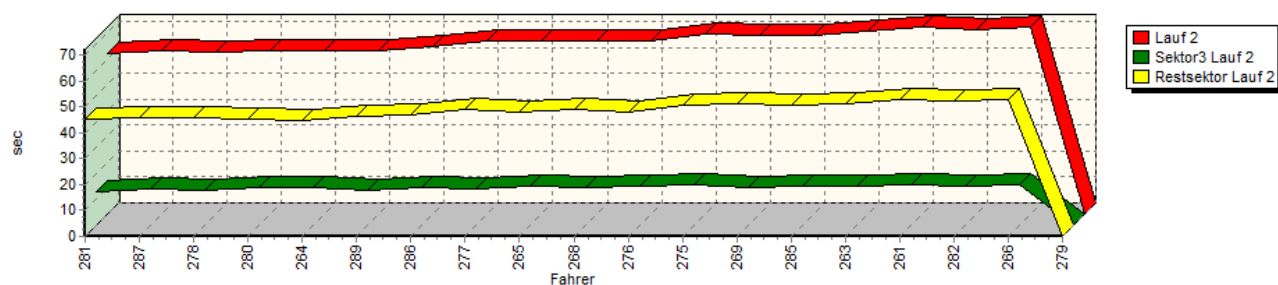
Speed-Diagramm Lauf 2



Sektor-Diagramm (Start) Lauf 2

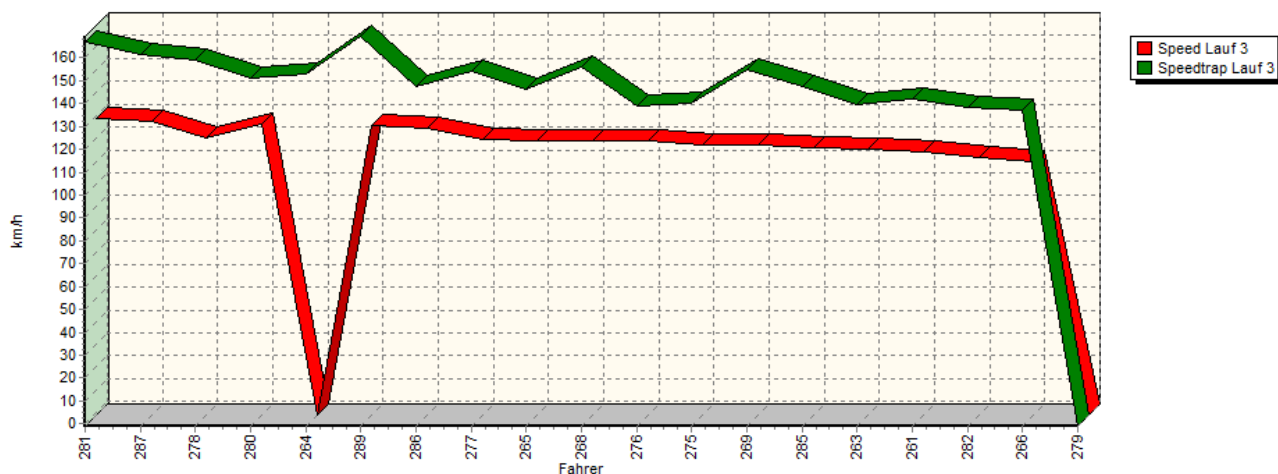


Sektor-Diagramm (Rest) Lauf 2

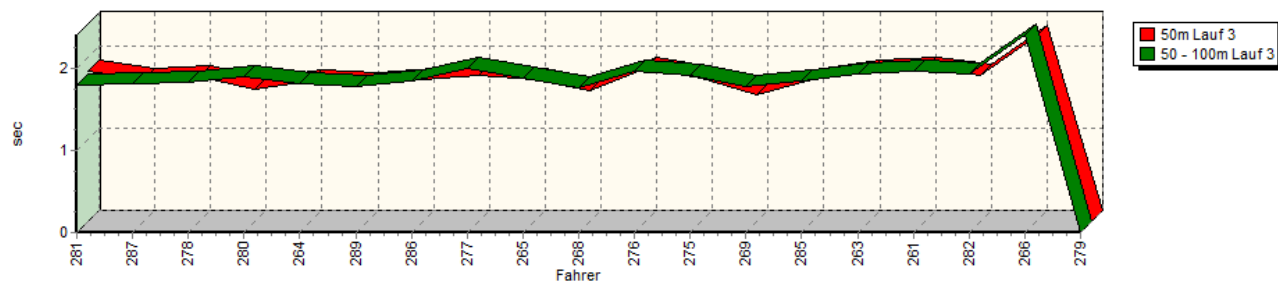


Sektorzeiten & Speeds - Gruppe H (DMSB, OSK) bis 1300 ccm - Klasse 19

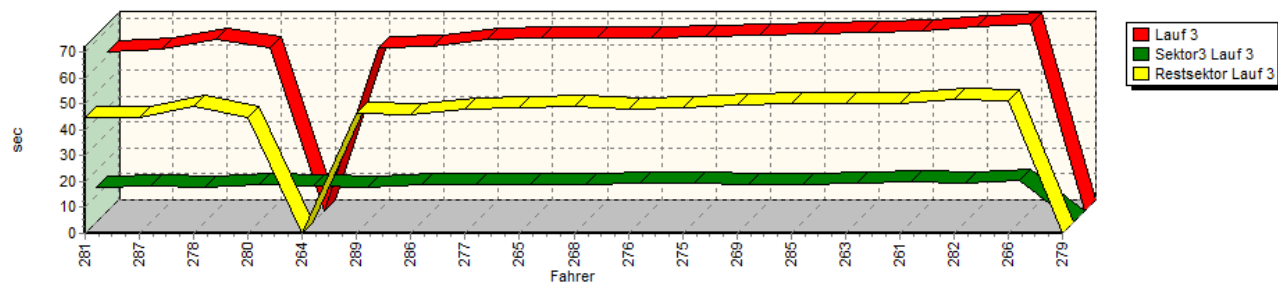
Speed-Diagramm Lauf 3



Sektor-Diagramm (Start) Lauf 3



Sektor-Diagramm (Rest) Lauf 3



Rg.	Nr.	Sektor 1 (15m)	Sektor 2 (15-50m)	Sektor 3	Speed Trap	Sektor 4	Laufzeit	Speed (Lauf)	
1	281	GEHRIG Jürgen		VW Polo 16V					
		Lauf 1:	00:01.963	00:01.899	00:13.534	150,66 km/h	00:48.771	01:06.167	119,70 km/h
		Lauf 2:	00:01.780	00:01.767	00:13.155	166,41 km/h	00:45.294	01:01.996	127,75 km/h
		Lauf 3:	00:01.834	00:01.791	00:13.193	167,26 km/h	00:44.606	01:01.424	128,94 km/h

Sektorzeiten & Speeds - Gruppe H (DMSB, OSK) bis 1300 ccm - Klasse 19

Rg.	Nr.		Sektor 1 (15m)	Sektor 2 (15-50m)	Sektor 3	Speed Trap	Sektor 4	Laufzeit	Speed (Lauf)
2	287	GLAS Wolfgang	VW Polo1 Minichberger 16V						
		Lauf 1:	00:01.695	00:01.822	00:13.726	162,60 km/h	00:45.817	01:03.060	125,60 km/h
		Lauf 2:	00:01.682	00:01.791	00:13.798	160,94 km/h	00:45.700	01:02.971	125,77 km/h
		Lauf 3:	00:01.728	00:01.803	00:13.772	161,21 km/h	00:44.954	01:02.257	127,21 km/h
3	278	STELBERG André	VW Schneider Polo I 16V						
		Lauf 1:	00:01.788	00:01.831	00:13.517	159,50 km/h	00:45.471	01:02.607	126,50 km/h
		Lauf 2:	00:01.739	00:01.805	00:13.463	159,87 km/h	00:45.575	01:02.582	126,56 km/h
		Lauf 3:	00:01.752	00:01.818	00:13.528	159,08 km/h	00:48.937	01:06.035	119,94 km/h
4	280	SPÖRI Markus	Suzuki Swift Gti 16V 4WD						
		Lauf 1:	00:01.558	00:01.829	00:14.501	151,87 km/h	00:45.411	01:03.299	125,12 km/h
		Lauf 2:	00:01.611	00:01.913	00:14.293	151,14 km/h	00:45.052	01:02.869	125,98 km/h
		Lauf 3:	00:01.607	00:01.896	00:14.318	150,97 km/h	00:44.930	01:02.751	126,21 km/h
5	264	EBENHÖH Armin	VW Polo						
		Lauf 1:	00:01.765	00:01.829	00:14.734	149,50 km/h	00:46.876	01:05.204	121,46 km/h
		Lauf 2:	00:01.690	00:01.838	00:14.416	150,21 km/h	00:44.918	01:02.862	125,99 km/h
		Lauf 3:	00:01.713	00:01.815	00:14.097	152,72 km/h	*	A	* km/h
6	289	KONRAD Manfred	VW Corrado						
		Lauf 1:	00:01.699	00:01.764	00:13.305	163,94 km/h	00:48.520	01:05.288	121,31 km/h
		Lauf 2:	00:01.667	00:01.772	00:13.254	167,60 km/h	00:46.525	01:03.218	125,28 km/h
		Lauf 3:	00:01.680	00:01.773	00:13.279	169,42 km/h	00:46.343	01:03.075	125,57 km/h
7	286	GÖTZL Helmut	VW EMP Polo 8V						
		Lauf 1:	00:01.725	00:01.839	00:14.516	147,87 km/h	00:46.676	01:04.756	122,31 km/h
		Lauf 2:	00:01.692	00:01.844	00:14.527	146,81 km/h	00:46.684	01:04.747	122,32 km/h
		Lauf 3:	00:01.726	00:01.840	00:14.426	147,53 km/h	00:45.750	01:03.742	124,25 km/h
8	277	VÖLKER Jörg	Suzuki Swift Gti 16V						
		Lauf 1:	00:01.976	00:02.105	00:14.901	145,72 km/h	00:49.477	01:08.459	115,69 km/h
		Lauf 2:	00:01.736	00:01.879	00:14.036	155,88 km/h	00:49.089	01:06.740	118,67 km/h
		Lauf 3:	00:01.775	00:02.000	00:14.383	154,37 km/h	00:47.953	01:06.111	119,80 km/h
9	265	BAUER Christoph	VW Polo 86C 8V						
		Lauf 1:	00:01.735	00:01.876	00:15.010	144,09 km/h	00:50.076	01:08.697	115,29 km/h
		Lauf 2:	00:01.720	00:01.867	00:14.872	143,11 km/h	00:48.142	01:06.601	118,92 km/h
		Lauf 3:	00:01.732	00:01.870	00:14.781	146,17 km/h	00:48.231	01:06.614	118,90 km/h
10	268	WIEBE Hans-Peter	Renault R8 Gordini						
		Lauf 1:	00:01.722	00:01.800	00:14.197	156,87 km/h	00:49.654	01:07.373	117,55 km/h
		Lauf 2:	00:01.613	00:01.888	00:14.512	156,03 km/h	00:49.041	01:07.054	118,11 km/h
		Lauf 3:	00:01.584	00:01.765	00:14.323	155,77 km/h	00:48.935	01:06.607	118,91 km/h
11	276	ABB Nils	VW Schneider Polo 8V						
		Lauf 1:	00:01.841	00:01.944	00:15.100	139,46 km/h	00:48.654	01:07.539	117,26 km/h
		Lauf 2:	00:01.763	00:01.941	00:15.025	139,92 km/h	00:48.038	01:06.767	118,62 km/h
		Lauf 3:	00:01.860	00:01.962	00:15.049	139,22 km/h	00:47.894	01:06.765	118,62 km/h
12	275	HÖRNIG Christof	Polo 8V						
		Lauf 1:	00:01.774	00:01.915	00:15.451	139,19 km/h	00:49.984	01:09.124	114,58 km/h
		Lauf 2:	00:01.745	00:01.941	00:15.413	138,77 km/h	00:50.459	01:09.558	113,86 km/h
		Lauf 3:	00:01.735	00:01.905	00:15.216	140,40 km/h	00:48.639	01:07.495	117,34 km/h
13	269	KOOB Franz	Fiat X1/9 16V						
		Lauf 1:	00:01.680	00:01.753	00:14.789	145,78 km/h	00:52.414	01:10.636	112,12 km/h
		Lauf 2:	00:01.642	00:01.791	00:14.566	154,12 km/h	00:51.022	01:09.021	114,75 km/h
		Lauf 3:	00:01.540	00:01.783	00:14.683	154,85 km/h	00:49.681	01:07.687	117,01 km/h

Sektorzeiten & Speeds - Gruppe H (DMSB, OSK) bis 1300 ccm - Klasse 19

Rg.	Nr.		Sektor 1 (15m)	Sektor 2 (15-50m)	Sektor 3	Speed Trap	Sektor 4	Laufzeit	Speed (Lauf)
14	285	RÜGER Marc-Peter		Audi 50 8V					
		Lauf 1:	00:01.765	00:01.842	00:14.884	148,08 km/h	00:52.799	01:11.290	111,10 km/h
		Lauf 2:	00:01.765	00:01.843	00:14.889	147,14 km/h	00:50.614	01:09.111	114,60 km/h
		Lauf 3:	00:01.731	00:01.838	00:14.667	147,37 km/h	00:50.119	01:08.355	115,87 km/h
15	263	TRIEBSTEIN Christian		VW Polo 1 8V					
		Lauf 1:	00:01.904	00:01.978	00:15.618	137,23 km/h	00:53.185	01:12.685	108,96 km/h
		Lauf 2:	00:01.885	00:01.965	00:15.224	139,50 km/h	00:51.290	01:10.364	112,56 km/h
		Lauf 3:	00:01.821	00:01.921	00:15.092	139,32 km/h	00:49.852	01:08.686	115,31 km/h
16	261	MÖRZL Christian		Talbot Samba Rallye					
		Lauf 1:	00:01.989	00:02.036	00:15.925	141,74 km/h	00:51.456	01:11.406	110,91 km/h
		Lauf 2:	00:01.874	00:01.957	00:15.790	138,62 km/h	00:52.618	01:12.239	109,64 km/h
		Lauf 3:	00:01.867	00:01.953	00:15.406	141,96 km/h	00:50.255	01:09.481	113,99 km/h
17	282	VITT Holger		JTM Polo Twist 8V					
		Lauf 1:	00:01.804	00:01.957	00:15.674	137,82 km/h	00:54.784	01:14.219	106,71 km/h
		Lauf 2:	00:01.772	00:01.935	00:15.362	138,74 km/h	00:52.297	01:11.366	110,98 km/h
		Lauf 3:	00:01.780	00:01.933	00:15.313	138,35 km/h	00:51.813	01:10.839	111,80 km/h
18	266	RUMPEL Rupert		Simca Rallye					
		Lauf 1:	00:01.831	00:01.936	00:15.687	135,15 km/h	00:56.468	01:15.922	104,32 km/h
		Lauf 2:	00:01.744	00:02.019	00:15.551	138,14 km/h	00:52.822	01:12.136	109,79 km/h
		Lauf 3:	00:02.242	00:02.401	00:16.276	137,27 km/h	00:51.234	01:12.153	109,77 km/h
19	279	MOSER Gerhard		VW Polo II 16V					
		Lauf 1:	00:01.831	00:01.800	00:13.547	162,15 km/h	01:04.246	01:21.424	97,27 km/h
		Lauf 2:	*	*	*	* km/h	*	*	* km/h
		Lauf 3:	*	*	*	* km/h	*	*	* km/h