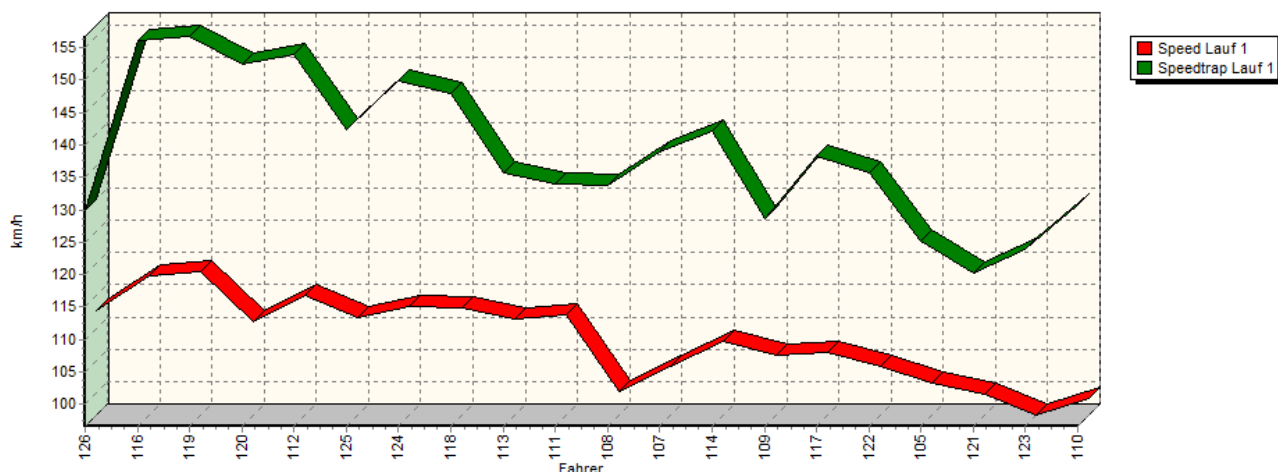
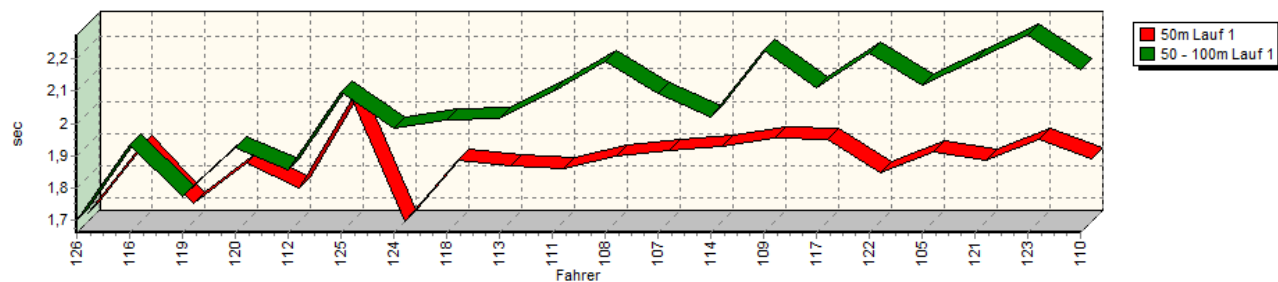


Sektorzeiten & Speeds - Gruppe N, H/N (OSK), F (DMSB), CTC/CGT (DMSB Div. 6.1 + 9)

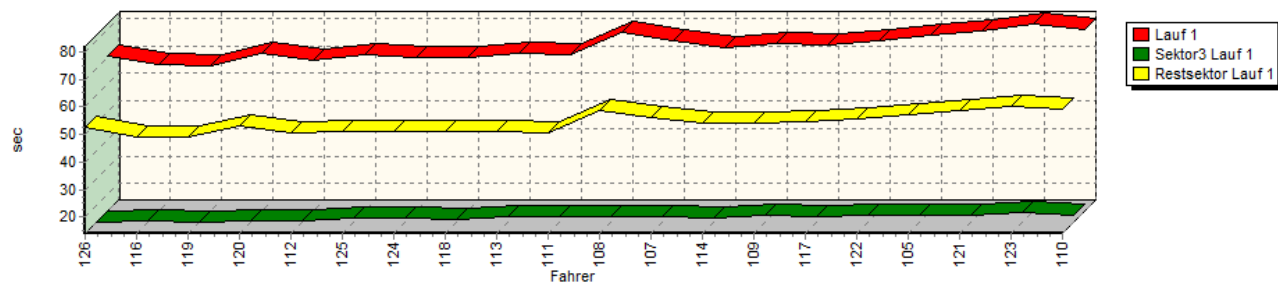
Speed-Diagramm Lauf 1



Sektor-Diagramm (Start) Lauf 1

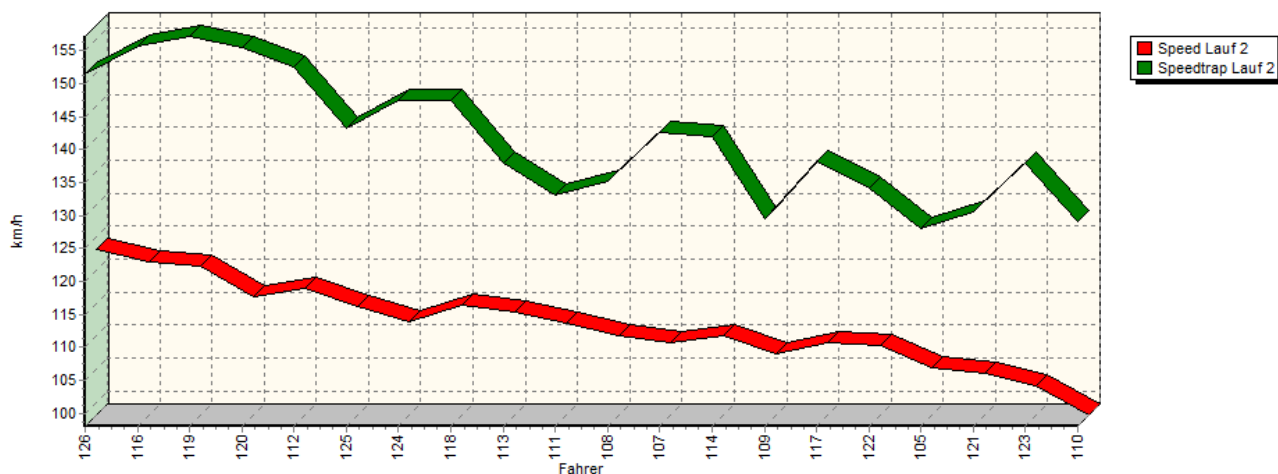


Sektor-Diagramm (Rest) Lauf 1

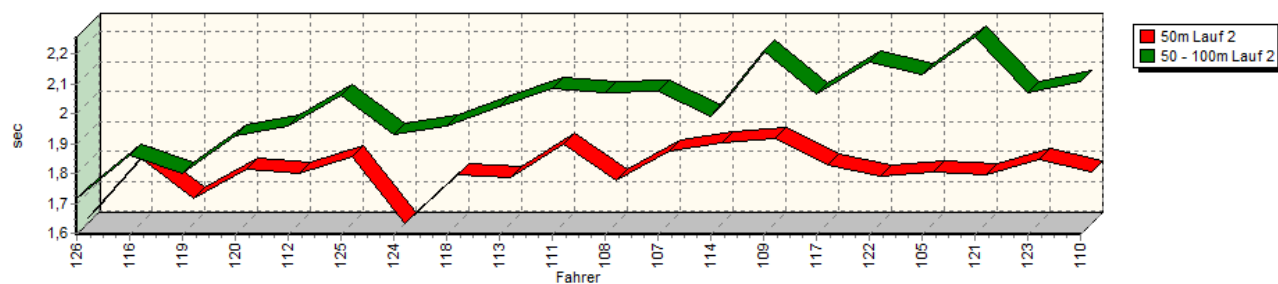


Sektorzeiten & Speeds - Gruppe N, H/N (OSK), F (DMSB), CTC/CGT (DMSB Div. 6.1 + 9)

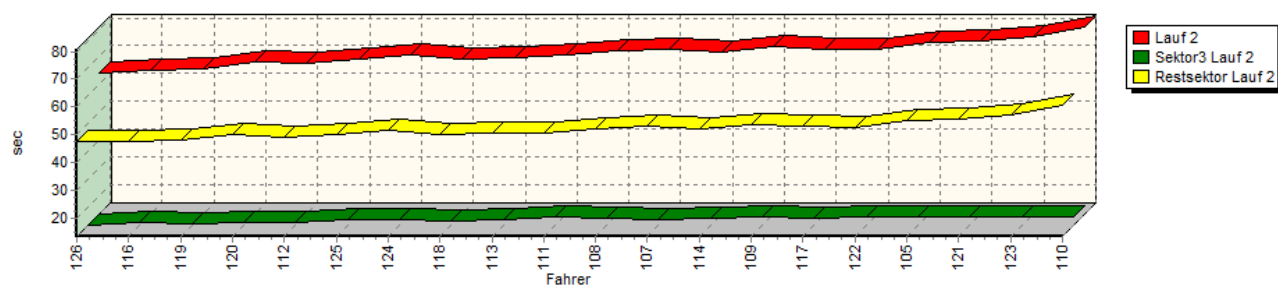
Speed-Diagramm Lauf 2



Sektor-Diagramm (Start) Lauf 2

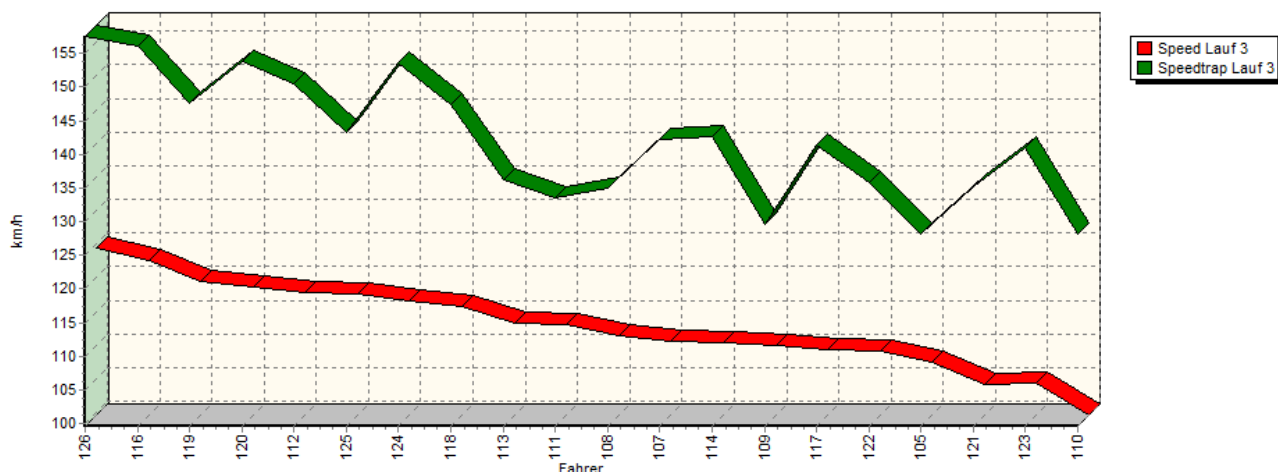


Sektor-Diagramm (Rest) Lauf 2

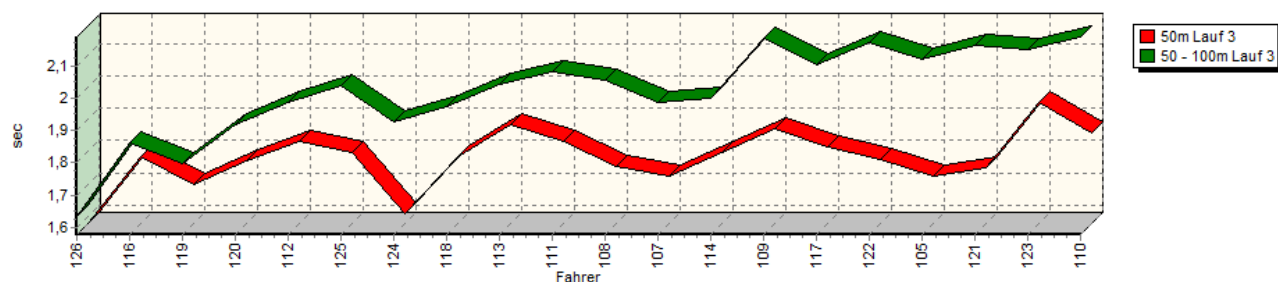


Sektorzeiten & Speeds - Gruppe N, H/N (OSK), F (DMSB), CTC/CGT (DMSB Div. 6.1 + 9)

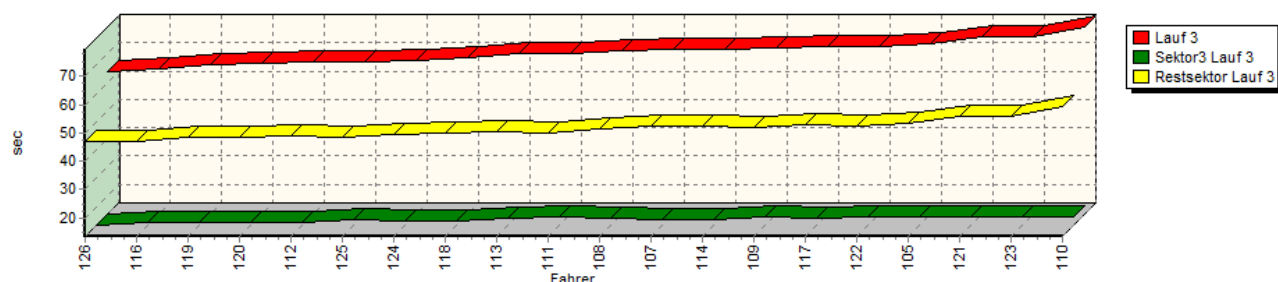
Speed-Diagramm Lauf 3



Sektor-Diagramm (Start) Lauf 3



Sektor-Diagramm (Rest) Lauf 3



Rg.	Nr.	Sektor 1 (15m)	Sektor 2 (15-50m)	Sektor 3	Speed Trap	Sektor 4	Laufzeit	Speed (Lauf)	
1	126	WIDMER Michael		Mitsubishi Lancer EVO X RSC					
		Lauf 1:	00:01.688	00:01.703	00:14.163	129,99 km/h	00:52.734	01:10.288	112,68 km/h
		Lauf 2:	00:01.615	00:01.718	00:13.360	151,51 km/h	00:47.568	01:04.261	123,25 km/h
		Lauf 3:	00:01.579	00:01.635	00:13.405	157,55 km/h	00:46.985	01:03.604	124,52 km/h

Sektorzeiten & Speeds - Gruppe N, H/N (OSK), F (DMSB), CTC/CGT (DMSB Div. 6.1 + 9)

Rg.	Nr.	Sektor 1 (15m)	Sektor 2 (15-50m)	Sektor 3	Speed Trap	Sektor 4	Laufzeit	Speed (Lauf)
2	116	ALLKOFER Christian	Fiat Punto RTN					
		Lauf 1: 00:01.894	00:01.933	00:14.392	156,05 km/h	00:48.826	01:07.045	118,13 km/h
		Lauf 2: 00:01.813	00:01.860	00:14.222	155,76 km/h	00:47.380	01:05.275	121,33 km/h
		Lauf 3: 00:01.786	00:01.860	00:14.149	156,05 km/h	00:46.790	01:04.585	122,63 km/h
3	119	STOLL Jochen	Peugeot 306 s16					
		Lauf 1: 00:01.718	00:01.773	00:14.027	156,75 km/h	00:49.231	01:06.749	118,65 km/h
		Lauf 2: 00:01.677	00:01.802	00:13.999	157,22 km/h	00:48.228	01:05.706	120,54 km/h
		Lauf 3: 00:01.697	00:01.798	00:14.271	147,69 km/h	00:48.477	01:06.243	119,56 km/h
4	120	GASSLER Bernhard	Honda Civic Type R					
		Lauf 1: 00:01.842	00:01.926	00:14.628	152,55 km/h	00:52.968	01:11.364	110,98 km/h
		Lauf 2: 00:01.775	00:01.927	00:14.333	155,56 km/h	00:50.313	01:08.348	115,88 km/h
		Lauf 3: 00:01.772	00:01.917	00:14.474	153,87 km/h	00:48.624	01:06.787	118,59 km/h
5	112	NEU Kai	Ford Escort RS 2000					
		Lauf 1: 00:01.767	00:01.857	00:14.651	153,98 km/h	00:50.552	01:08.827	115,07 km/h
		Lauf 2: 00:01.764	00:01.959	00:14.481	152,66 km/h	00:49.316	01:07.520	117,30 km/h
		Lauf 3: 00:01.832	00:01.987	00:14.635	150,49 km/h	00:48.814	01:07.268	117,74 km/h
6	125	UENZEN Hendrik	BMW E 36 325i					
		Lauf 1: 00:02.039	00:02.095	00:15.639	142,32 km/h	00:51.186	01:10.959	111,61 km/h
		Lauf 2: 00:01.820	00:02.061	00:15.214	143,22 km/h	00:50.096	01:09.191	114,47 km/h
		Lauf 3: 00:01.796	00:02.036	00:15.228	143,28 km/h	00:48.312	01:07.372	117,56 km/h
7	124	BESTLE Guido	Renault Alpine V6 GT Turbo D 5l					
		Lauf 1: 00:01.663	00:01.984	00:15.308	149,82 km/h	00:50.920	01:09.875	113,34 km/h
		Lauf 2: 00:01.595	00:01.932	00:15.433	147,46 km/h	00:51.670	01:10.630	112,13 km/h
		Lauf 3: 00:01.607	00:01.926	00:14.995	153,52 km/h	00:49.377	01:07.905	116,63 km/h
8	118	SCHMITZ Herbert	Opel Astra GSI					
		Lauf 1: 00:01.854	00:02.012	00:14.893	147,95 km/h	00:51.261	01:10.020	113,11 km/h
		Lauf 2: 00:01.758	00:01.958	00:14.970	147,39 km/h	00:50.338	01:09.024	114,74 km/h
		Lauf 3: 00:01.783	00:01.975	00:14.966	147,44 km/h	00:49.696	01:08.420	115,76 km/h
9	113	LINNEMEYER Thomas	VW Golf II GTI 16V					
		Lauf 1: 00:01.833	00:02.017	00:16.213	135,78 km/h	00:51.052	01:11.115	111,37 km/h
		Lauf 2: 00:01.748	00:02.024	00:15.531	137,91 km/h	00:50.388	01:09.691	113,64 km/h
		Lauf 3: 00:01.884	00:02.042	00:15.740	136,24 km/h	00:50.278	01:09.944	113,23 km/h
10	111	RIED Matthias	Opel Manta B					
		Lauf 1: 00:01.827	00:02.096	00:16.144	134,06 km/h	00:50.542	01:10.609	112,17 km/h
		Lauf 2: 00:01.861	00:02.084	00:16.168	133,08 km/h	00:50.638	01:10.751	111,94 km/h
		Lauf 3: 00:01.831	00:02.080	00:16.239	133,48 km/h	00:49.965	01:10.115	112,96 km/h
11	108	JAKOBI Stephanie	Honda Civic EG 4					
		Lauf 1: 00:01.865	00:02.191	00:16.259	133,74 km/h	00:58.715	01:19.030	100,22 km/h
		Lauf 2: 00:01.742	00:02.073	00:15.988	135,21 km/h	00:52.232	01:12.035	109,95 km/h
		Lauf 3: 00:01.755	00:02.053	00:15.866	134,99 km/h	00:51.370	01:11.044	111,48 km/h
12	107	FENDL Michael	Honda Civic EE 9					
		Lauf 1: 00:01.884	00:02.092	00:16.087	138,88 km/h	00:56.024	01:16.087	104,09 km/h
		Lauf 2: 00:01.840	00:02.078	00:15.518	142,61 km/h	00:53.204	01:12.640	109,03 km/h
		Lauf 3: 00:01.725	00:01.988	00:15.441	142,23 km/h	00:52.435	01:11.589	110,63 km/h
13	114	LIMMER Armin	Fiat Tipo 16V					
		Lauf 1: 00:01.893	00:02.018	00:15.470	142,07 km/h	00:53.944	01:13.325	108,01 km/h
		Lauf 2: 00:01.868	00:01.992	00:15.758	141,99 km/h	00:52.341	01:11.959	110,06 km/h
		Lauf 3: 00:01.798	00:01.998	00:15.527	142,66 km/h	00:52.423	01:11.746	110,39 km/h

Sektorzeiten & Speeds - Gruppe N, H/N (OSK), F (DMSB), CTC/CGT (DMSB Div. 6.1 + 9)

Rg.	Nr.	Sektor 1 (15m)	Sektor 2 (15-50m)	Sektor 3	Speed Trap	Sektor 4	Laufzeit	Speed (Lauf)	
14	109	GÜRTZGEN Friedhelm	BMW 2002 tii						
		Lauf 1:	00:01.922	00:02.227	00:16.689	128,55 km/h	00:53.953	01:14.791	105,90 km/h
		Lauf 2:	00:01.882	00:02.213	00:16.133	129,52 km/h	00:53.639	01:13.867	107,22 km/h
		Lauf 3:	00:01.870	00:02.184	00:16.174	129,67 km/h	00:51.844	01:12.072	109,89 km/h
15	117	HEß Mario	Opel Kadett GSi						
		Lauf 1:	00:01.918	00:02.109	00:16.059	138,22 km/h	00:54.405	01:14.491	106,32 km/h
		Lauf 2:	00:01.793	00:02.067	00:15.729	138,27 km/h	00:53.102	01:12.691	108,95 km/h
		Lauf 3:	00:01.814	00:02.101	00:15.882	141,39 km/h	00:52.667	01:12.464	109,30 km/h
16	122	GIEBEL Michael	BMW E30 325i						
		Lauf 1:	00:01.815	00:02.218	00:16.418	135,69 km/h	00:55.665	01:16.116	104,05 km/h
		Lauf 2:	00:01.756	00:02.174	00:16.359	134,20 km/h	00:52.590	01:12.879	108,67 km/h
		Lauf 3:	00:01.776	00:02.169	00:16.263	135,87 km/h	00:52.313	01:12.521	109,21 km/h
17	105	ALTMANN Dieter jun.	Peugeot 205 Rally 1,3						
		Lauf 1:	00:01.878	00:02.118	00:16.735	125,09 km/h	00:57.225	01:17.956	101,60 km/h
		Lauf 2:	00:01.767	00:02.130	00:16.512	128,08 km/h	00:54.915	01:15.324	105,15 km/h
		Lauf 3:	00:01.726	00:02.119	00:16.505	128,25 km/h	00:53.401	01:13.751	107,39 km/h
18	121	SCHMELZ Joachim	Renault Alpine A310 V6						
		Lauf 1:	00:01.854	00:02.194	00:16.785	120,14 km/h	00:58.455	01:19.288	99,89 km/h
		Lauf 2:	00:01.758	00:02.258	00:16.373	130,60 km/h	00:55.504	01:15.893	104,36 km/h
		Lauf 3:	00:01.752	00:02.164	00:16.315	135,27 km/h	00:55.878	01:16.109	104,06 km/h
19	123	TÖGEL Roland	BMW M3 E30						
		Lauf 1:	00:01.915	00:02.273	00:17.452	123,87 km/h	01:00.337	01:21.977	96,61 km/h
		Lauf 2:	00:01.812	00:02.073	00:16.300	137,97 km/h	00:57.050	01:17.235	102,54 km/h
		Lauf 3:	00:01.950	00:02.151	00:16.128	140,94 km/h	00:55.693	01:15.922	104,32 km/h
20	110	RIEBESEHL Klaus	Opel Kadett GSi						
		Lauf 1:	00:01.856	00:02.166	00:16.492	130,70 km/h	00:59.306	01:19.820	99,22 km/h
		Lauf 2:	00:01.770	00:02.109	00:16.228	129,16 km/h	01:00.713	01:20.820	98,00 km/h
		Lauf 3:	00:01.858	00:02.188	00:16.186	128,13 km/h	00:59.283	01:19.515	99,60 km/h