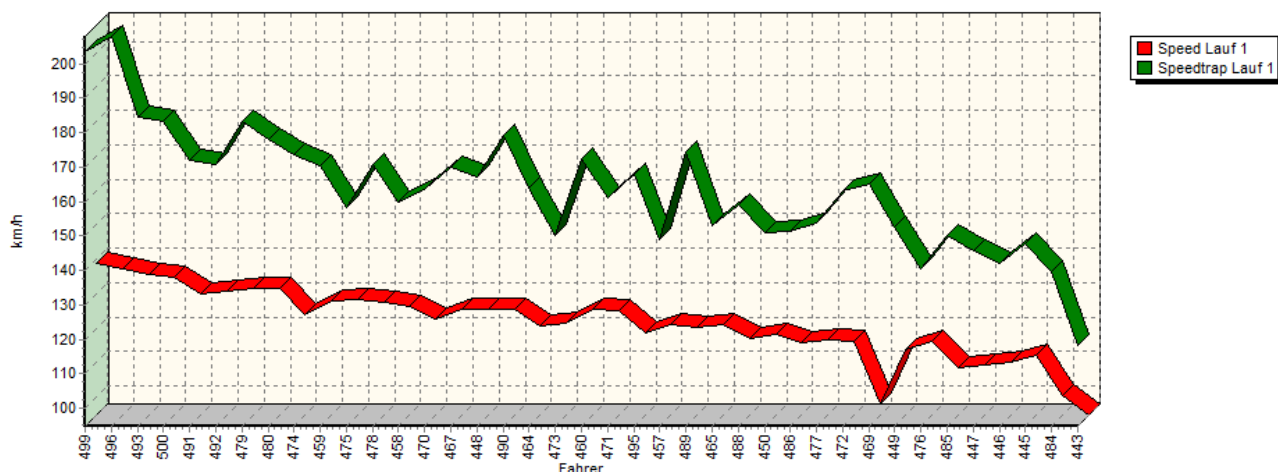
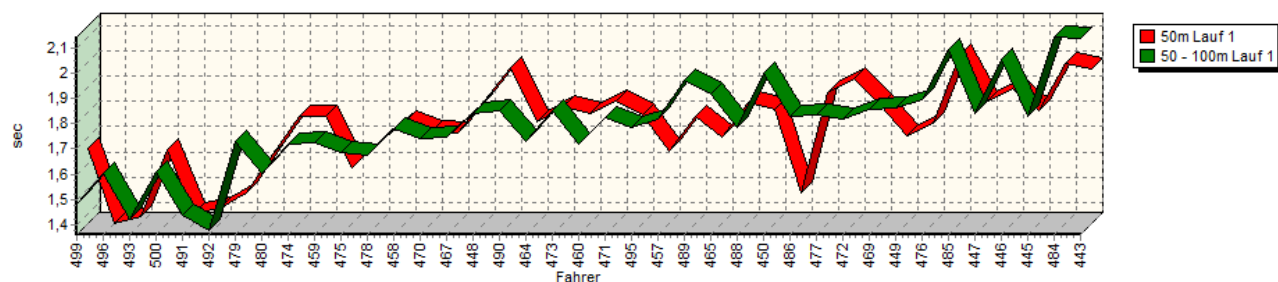


Sektorzeiten & Speeds - Gruppe E1/FS

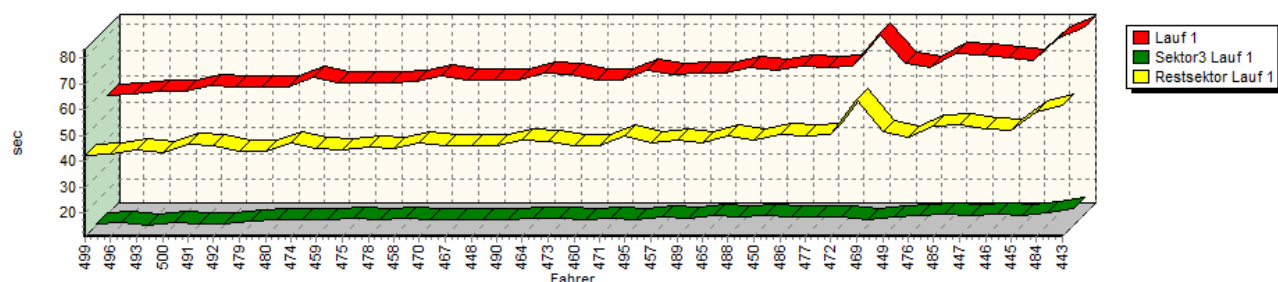
Speed-Diagramm Lauf 1



Sektor-Diagramm (Start) Lauf 1

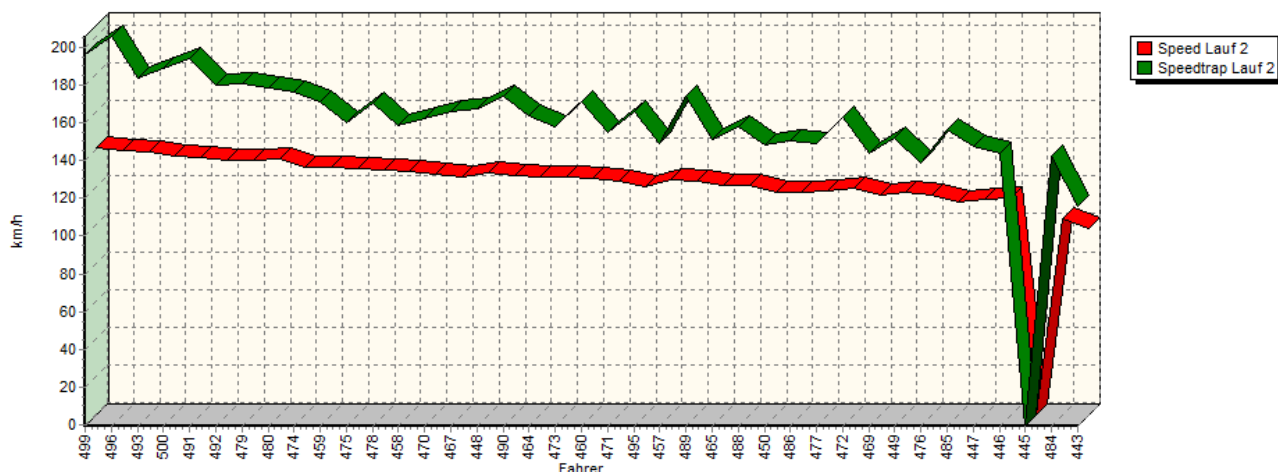


Sektor-Diagramm (Rest) Lauf 1

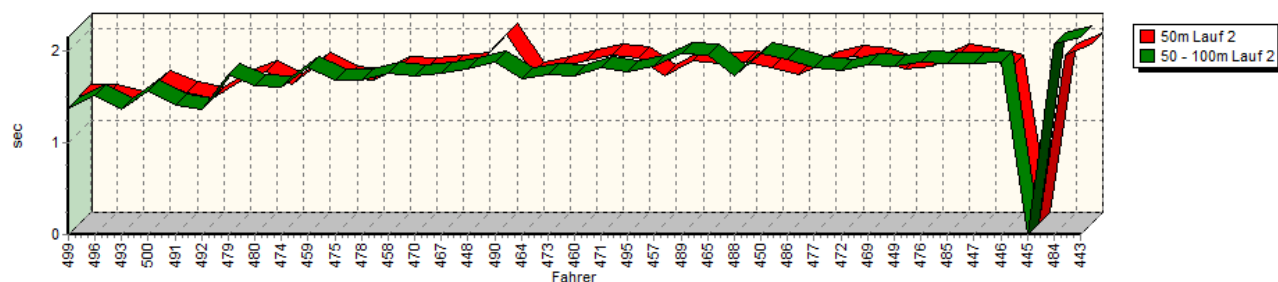


Sektorzeiten & Speeds - Gruppe E1/FS

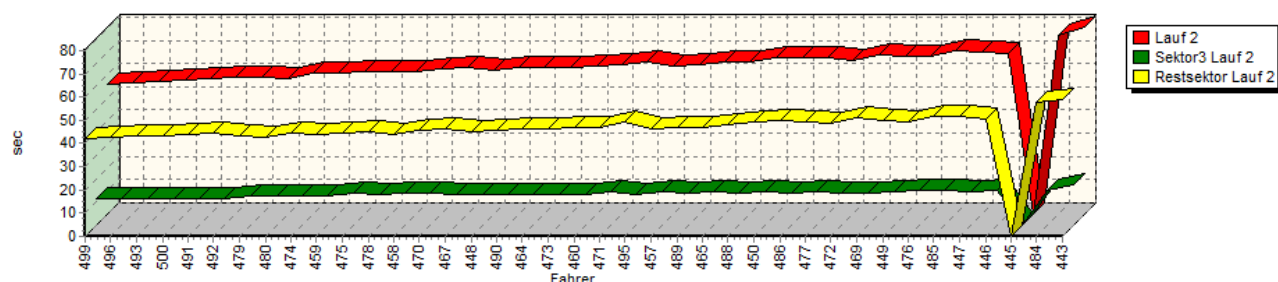
Speed-Diagramm Lauf 2



Sektor-Diagramm (Start) Lauf 2

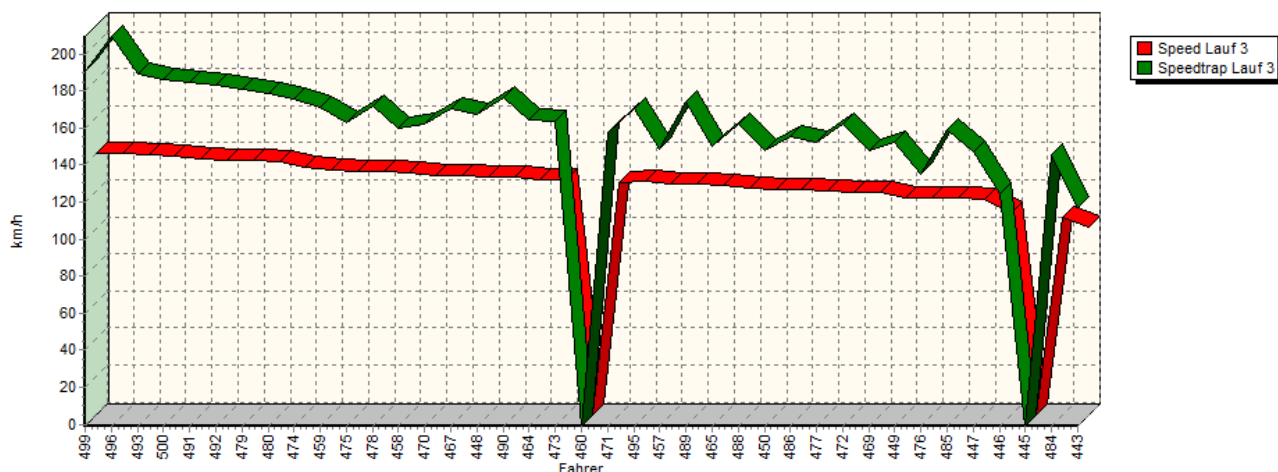


Sektor-Diagramm (Rest) Lauf 2

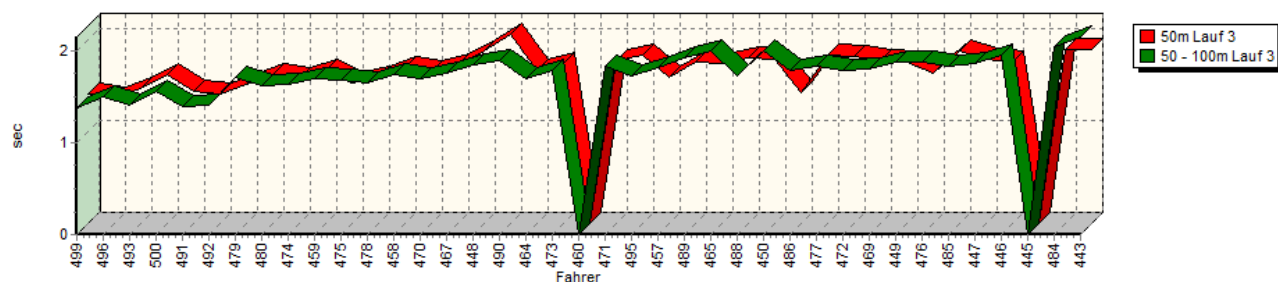


Sektorzeiten & Speeds - Gruppe E1/FS

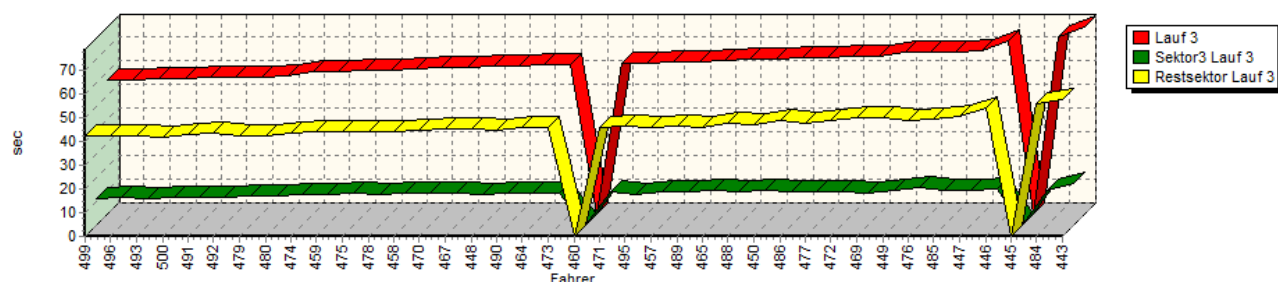
Speed-Diagramm Lauf 3



Sektor-Diagramm (Start) Lauf 3



Sektor-Diagramm (Rest) Lauf 3



Rg.	Nr.	Sektor 1 (15m)	Sektor 2 (15-50m)	Sektor 3	Speed Trap	Sektor 4	Laufzeit	Speed (Lauf)	
1	499	HANDA Norbert		Lancia Delta Integ. Evo 3					
		Lauf 1:	00:01.658	00:01.483	00:11.396	203,58 km/h	00:42.517	00:57.054	138,82 km/h
		Lauf 2:	00:01.392	00:01.373	00:11.153	196,77 km/h	00:42.135	00:56.053	141,29 km/h
		Lauf 3:	00:01.407	00:01.381	00:11.182	190.61 km/h	00:42.393	00:56.363	140.52 km/h

Sektorzeiten & Speeds - Gruppe E1/FS

Rg.	Nr.		Sektor 1 (15m)	Sektor 2 (15-50m)	Sektor 3	Speed Trap	Sektor 4	Laufzeit	Speed (Lauf)
2	496	STOLZ Herbert		Porsche 935 DP II					
		Lauf 1:	00:01.360	00:01.605	00:11.933	207,91 km/h	00:42.829	00:57.727	137,20 km/h
		Lauf 2:	00:01.393	00:01.514	00:11.415	206,14 km/h	00:42.455	00:56.777	139,49 km/h
		Lauf 3:	00:01.372	00:01.506	00:11.488	209,41 km/h	00:42.141	00:56.507	140,16 km/h
3	493	PAILER Felix		Lancia Integrale 16V					
		Lauf 1:	00:01.389	00:01.423	00:11.059	184,56 km/h	00:44.500	00:58.371	135,68 km/h
		Lauf 2:	00:01.314	00:01.362	00:11.321	184,14 km/h	00:43.209	00:57.206	138,45 km/h
		Lauf 3:	00:01.474	00:01.416	00:11.253	189,20 km/h	00:42.639	00:56.782	139,48 km/h
4	500	MICHL Dan		Opel Michl 2,8					
		Lauf 1:	00:01.651	00:01.608	00:11.906	183,14 km/h	00:43.616	00:58.781 +15s	134,74 km/h
		Lauf 2:	00:01.538	00:01.555	00:11.689	189,16 km/h	00:43.175	00:57.957	136,65 km/h
		Lauf 3:	00:01.628	00:01.560	00:11.888	186,39 km/h	00:42.023	00:57.099	138,71 km/h
5	491	JELINEK Michael		Subaru Impreza GT EVO 1					
		Lauf 1:	00:01.396	00:01.438	00:11.648	172,03 km/h	00:46.543	01:01.025	129,78 km/h
		Lauf 2:	00:01.420	00:01.411	00:11.677	193,96 km/h	00:43.775	00:58.283	135,89 km/h
		Lauf 3:	00:01.435	00:01.394	00:11.574	184,84 km/h	00:43.153	00:57.556	137,60 km/h
6	492	GIULIANI Fulvio		Lancia Delta EVO					
		Lauf 1:	00:01.423	00:01.374	00:11.570	170,77 km/h	00:46.146	01:00.513	130,88 km/h
		Lauf 2:	00:01.364	00:01.364	00:11.451	180,59 km/h	00:44.658	00:58.837	134,61 km/h
		Lauf 3:	00:01.405	00:01.416	00:11.600	183,46 km/h	00:43.463	00:57.884	136,83 km/h
7	479	VITVER Vladimir		Lotus WR					
		Lauf 1:	00:01.479	00:01.728	00:12.657	183,11 km/h	00:44.278	01:00.142	131,69 km/h
		Lauf 2:	00:01.540	00:01.737	00:12.550	180,65 km/h	00:43.257	00:59.084	134,05 km/h
		Lauf 3:	00:01.523	00:01.707	00:12.490	181,19 km/h	00:42.206	00:57.926	136,73 km/h
8	480	MARKO Andreas		Audi A4 STW quattro					
		Lauf 1:	00:01.634	00:01.602	00:13.052	178,06 km/h	00:43.870	01:00.158	131,65 km/h
		Lauf 2:	00:01.656	00:01.618	00:12.652	178,73 km/h	00:42.556	00:58.482	135,43 km/h
		Lauf 3:	00:01.621	00:01.622	00:12.572	178,86 km/h	00:42.511	00:58.326	135,79 km/h
9	474	CERMAK Jan		Lotus WR					
		Lauf 1:	00:01.787	00:01.718	00:13.244	173,44 km/h	00:47.269	01:04.018	123,72 km/h
		Lauf 2:	00:01.519	00:01.599	00:12.869	176,38 km/h	00:44.570	01:00.557	130,79 km/h
		Lauf 3:	00:01.570	00:01.632	00:12.851	175,65 km/h	00:43.713	00:59.766	132,52 km/h
10	459	MICHALKO Manuel		Citroen Saxo					
		Lauf 1:	00:01.784	00:01.726	00:13.332	170,44 km/h	00:45.108	01:01.950	127,85 km/h
		Lauf 2:	00:01.737	00:01.815	00:12.868	171,28 km/h	00:44.110	01:00.530	130,85 km/h
		Lauf 3:	00:01.668	00:01.698	00:12.844	171,38 km/h	00:44.066	01:00.276	131,40 km/h
11	475	GREPPMEIER Andreas		Opel Kadett C					
		Lauf 1:	00:01.582	00:01.685	00:13.652	158,29 km/h	00:44.734	01:01.653	128,46 km/h
		Lauf 2:	00:01.596	00:01.686	00:13.608	160,18 km/h	00:44.228	01:01.118	129,58 km/h
		Lauf 3:	00:01.525	00:01.688	00:13.436	162,67 km/h	00:43.927	01:00.576	130,75 km/h
12	478	GÖSER Günter		Opel Kadett C Coupe 16V					
		Lauf 1:	00:01.679	00:01.673	00:13.267	170,81 km/h	00:45.506	01:02.125	127,48 km/h
		Lauf 2:	00:01.560	00:01.683	00:13.143	170,74 km/h	00:44.973	01:01.359	129,08 km/h
		Lauf 3:	00:01.593	00:01.661	00:13.042	171,47 km/h	00:44.370	01:00.666	130,55 km/h
13	458	STRASSER Norbert jun.		Toyota Corolla AE86					
		Lauf 1:	00:01.762	00:01.780	00:13.775	159,98 km/h	00:45.373	01:02.690	126,33 km/h
		Lauf 2:	00:01.694	00:01.749	00:14.026	158,46 km/h	00:44.113	01:01.582	128,61 km/h
		Lauf 3:	00:01.702	00:01.745	00:13.578	159,81 km/h	00:43.905	01:00.930	129,99 km/h

Sektorzeiten & Speeds - Gruppe E1/FS

Rg.	Nr.		Sektor 1 (15m)	Sektor 2 (15-50m)	Sektor 3	Speed Trap	Sektor 4	Laufzeit	Speed (Lauf)
14	470	NEUMAYR Christopher	Ford Escort MK 2						
		Lauf 1:	00:01.724	00:01.740	00:13.481	163,49 km/h	00:47.528	01:04.473	122,84 km/h
		Lauf 2:	00:01.682	00:01.730	00:13.535	162,52 km/h	00:45.569	01:02.516	126,69 km/h
		Lauf 3:	00:01.660	00:01.706	00:13.480	161,81 km/h	00:44.886	01:01.732	128,30 km/h
15	467	HOULMANN Fabien	Peugeot 205						
		Lauf 1:	00:01.719	00:01.745	00:13.482	169,89 km/h	00:46.219	01:03.165	125,39 km/h
		Lauf 2:	00:01.705	00:01.756	00:13.419	165,84 km/h	00:46.403	01:03.283	125,15 km/h
		Lauf 3:	00:01.736	00:01.759	00:13.289	170,42 km/h	00:45.065	01:01.849	128,06 km/h
16	448	STRASSER Thomas jun.	VW Polo 16V						
		Lauf 1:	00:01.849	00:01.842	00:13.316	167,26 km/h	00:46.180	01:03.187	125,34 km/h
		Lauf 2:	00:01.741	00:01.807	00:13.347	167,50 km/h	00:45.125	01:02.020	127,70 km/h
		Lauf 3:	00:01.883	00:01.844	00:13.205	167,51 km/h	00:45.245	01:02.177	127,38 km/h
17	490	NEFF Frederic	BMW E30						
		Lauf 1:	00:01.979	00:01.852	00:13.065	179,23 km/h	00:46.114	01:03.010	125,69 km/h
		Lauf 2:	00:02.063	00:01.885	00:13.177	174,48 km/h	00:45.743	01:02.868	125,98 km/h
		Lauf 3:	00:02.067	00:01.900	00:13.252	176,03 km/h	00:44.857	01:02.076	127,59 km/h
18	464	REITER Nicolas	Ford Escort MK I						
		Lauf 1:	00:01.762	00:01.728	00:13.534	163,92 km/h	00:48.516	01:05.540	120,84 km/h
		Lauf 2:	00:01.642	00:01.702	00:13.451	163,72 km/h	00:46.294	01:03.089	125,54 km/h
		Lauf 3:	00:01.663	00:01.697	00:13.257	164,06 km/h	00:46.084	01:02.701	126,31 km/h
19	473	VALLAT Patrick	VW Golf						
		Lauf 1:	00:01.824	00:01.852	00:13.616	150,04 km/h	00:47.964	01:05.256	121,37 km/h
		Lauf 2:	00:01.699	00:01.746	00:13.324	157,98 km/h	00:46.256	01:03.025	125,66 km/h
		Lauf 3:	00:01.745	00:01.797	00:13.560	163,70 km/h	00:45.826	01:02.928	125,86 km/h
20	460	PISANO Egidio	Spiess Golf 1 16V						
		Lauf 1:	00:01.794	00:01.720	00:13.158	172,28 km/h	00:46.358	01:03.030	125,66 km/h
		Lauf 2:	00:01.778	00:01.733	00:13.034	171,08 km/h	00:46.992	01:03.537	124,65 km/h
		Lauf 3:	*	*	*	* km/h	*	*	* km/h
21	471	LAMPERT Christoph	Golf GTI 16V						
		Lauf 1:	00:01.849	00:01.825	00:13.613	161,05 km/h	00:45.939	01:03.226	125,26 km/h
		Lauf 2:	00:01.833	00:01.815	00:14.148	155,07 km/h	00:46.615	01:04.411	122,96 km/h
		Lauf 3:	00:01.777	00:01.839	00:14.015	157,28 km/h	00:46.168	01:03.799	124,14 km/h
22	495	RÖCK Sabine	VW Golf 1 Turbo						
		Lauf 1:	00:01.792	00:01.783	00:13.139	167,73 km/h	00:50.058	01:06.772	118,61 km/h
		Lauf 2:	00:01.808	00:01.771	00:13.001	166,40 km/h	00:49.080	01:05.660	120,62 km/h
		Lauf 3:	00:01.839	00:01.736	00:13.025	170,41 km/h	00:46.686	01:03.286	125,15 km/h
23	457	STRASSER Michael	Toyota Corolla AE86						
		Lauf 1:	00:01.646	00:01.819	00:14.510	148,77 km/h	00:47.334	01:05.309	121,27 km/h
		Lauf 2:	00:01.604	00:01.831	00:14.257	148,99 km/h	00:46.230	01:03.922	123,90 km/h
		Lauf 3:	00:01.597	00:01.822	00:14.383	148,53 km/h	00:46.041	01:03.843	124,05 km/h
24	489	NAUSCHNEGG Reinhold	Opel Calibra						
		Lauf 1:	00:01.788	00:01.972	00:13.805	174,40 km/h	00:48.211	01:05.776	120,41 km/h
		Lauf 2:	00:01.766	00:01.961	00:13.737	174,56 km/h	00:46.923	01:04.387	123,01 km/h
		Lauf 3:	00:01.760	00:01.933	00:13.833	173,93 km/h	00:46.640	01:04.166	123,43 km/h
25	465	SCHUSTER Jürgen	Mazda RX-7						
		Lauf 1:	00:01.701	00:01.919	00:14.664	153,11 km/h	00:47.168	01:05.452	121,01 km/h
		Lauf 2:	00:01.739	00:01.960	00:14.512	151,20 km/h	00:47.139	01:05.350	121,19 km/h
		Lauf 3:	00:01.744	00:02.006	00:14.651	150,00 km/h	00:46.115	01:04.516	122,76 km/h

Sektorzeiten & Speeds - Gruppe E1/FS

Rg.	Nr.		Sektor 1 (15m)	Sektor 2 (15-50m)	Sektor 3	Speed Trap	Sektor 4	Laufzeit	Speed (Lauf)
26	488	FAVRE Bertrand	BMW E 30						
		Lauf 1:	00:01.842	00:01.788	00:14.174	159,21 km/h	00:49.786	01:07.590	117,18 km/h
		Lauf 2:	00:01.758	00:01.731	00:13.977	158,03 km/h	00:47.938	01:05.404	121,09 km/h
		Lauf 3:	00:01.809	00:01.736	00:13.868	162,35 km/h	00:47.598	01:05.011	121,83 km/h
27	450	BÄCHLER Martin	VW Lupo						
		Lauf 1:	00:01.815	00:02.004	00:14.598	151,05 km/h	00:48.502	01:06.919	118,35 km/h
		Lauf 2:	00:01.690	00:01.971	00:14.721	148,36 km/h	00:49.063	01:07.445	117,43 km/h
		Lauf 3:	00:01.791	00:02.001	00:14.732	148,15 km/h	00:47.019	01:05.543	120,84 km/h
28	486	CRETEGNY Jean-Romain	Ford Sierra Cosworth						
		Lauf 1:	00:01.483	00:01.831	00:14.519	151,24 km/h	00:50.518	01:08.351	115,87 km/h
		Lauf 2:	00:01.621	00:01.901	00:14.118	150,85 km/h	00:49.630	01:07.270	117,73 km/h
		Lauf 3:	00:01.422	00:01.792	00:13.940	155,07 km/h	00:48.619	01:05.773	120,41 km/h
29	477	GRÜNIG Stefan	VW Golf 8V						
		Lauf 1:	00:01.878	00:01.836	00:14.436	153,80 km/h	00:49.823	01:07.973	116,52 km/h
		Lauf 2:	00:01.736	00:01.810	00:14.552	149,50 km/h	00:49.132	01:07.230	117,81 km/h
		Lauf 3:	00:01.832	00:01.834	00:14.335	152,53 km/h	00:47.844	01:05.845	120,28 km/h
30	472	SPIESS Erwin	Renault Clio RS						
		Lauf 1:	00:01.937	00:01.819	00:14.167	163,08 km/h	00:50.305	01:08.228	116,08 km/h
		Lauf 2:	00:01.815	00:01.781	00:13.921	163,10 km/h	00:48.542	01:06.059	119,89 km/h
		Lauf 3:	00:01.818	00:01.789	00:14.156	162,24 km/h	00:48.536	01:06.299	119,46 km/h
31	469	GRIMALDI Romeo	Simo-Honda Civic						
		Lauf 1:	00:01.830	00:01.856	00:13.232	165,12 km/h	01:03.913	01:20.831	97,98 km/h
		Lauf 2:	00:01.788	00:01.842	00:13.541	143,66 km/h	00:51.097	01:08.268	116,01 km/h
		Lauf 3:	00:01.769	00:01.803	00:13.266	147,61 km/h	00:49.766	01:06.604	118,91 km/h
32	449	THALMAYR Stefan	Suzuki Swift GTR						
		Lauf 1:	00:01.706	00:01.863	00:14.529	152,48 km/h	00:51.476	01:09.574	113,84 km/h
		Lauf 2:	00:01.677	00:01.835	00:14.330	152,35 km/h	00:49.790	01:07.632	117,10 km/h
		Lauf 3:	00:01.762	00:01.876	00:14.495	152,12 km/h	00:49.863	01:07.996	116,48 km/h
33	476	KIESER Werner	Ford Escort RS 2000						
		Lauf 1:	00:01.757	00:01.895	00:15.037	140,33 km/h	00:49.390	01:08.079	116,34 km/h
		Lauf 2:	00:01.712	00:01.880	00:15.183	138,59 km/h	00:49.423	01:08.198	116,13 km/h
		Lauf 3:	00:01.632	00:01.875	00:15.874	135,13 km/h	00:48.678	01:08.059	116,37 km/h
34	485	TAVANI Giuliano	BMW 330 D c/46						
		Lauf 1:	00:02.030	00:02.096	00:15.406	150,28 km/h	00:53.550	01:13.082	108,37 km/h
		Lauf 2:	00:01.832	00:01.866	00:15.015	156,25 km/h	00:51.704	01:10.417	112,47 km/h
		Lauf 3:	00:01.888	00:01.843	00:14.925	158,96 km/h	00:49.610	01:08.266	116,02 km/h
35	447	STRASSER Gerald	VW Polo						
		Lauf 1:	00:01.843	00:01.841	00:14.643	145,73 km/h	00:54.130	01:12.457	109,31 km/h
		Lauf 2:	00:01.788	00:01.861	00:14.479	147,56 km/h	00:51.777	01:09.905	113,30 km/h
		Lauf 3:	00:01.794	00:01.861	00:14.564	146,79 km/h	00:50.459	01:08.678	115,32 km/h
36	446	AUER Robert	VW Polo RSS						
		Lauf 1:	00:01.898	00:02.054	00:15.342	142,07 km/h	00:52.507	01:11.801	110,30 km/h
		Lauf 2:	00:01.705	00:01.885	00:14.914	143,91 km/h	00:50.772	01:09.276	114,32 km/h
		Lauf 3:	00:01.754	00:01.960	00:15.319	124,85 km/h	00:54.152	01:13.185	108,22 km/h
37	445	MARCHIONE Canio	Fiat 127						
		Lauf 1:	00:01.808	00:01.830	00:14.926	147,82 km/h	00:52.110	01:10.674	112,06 km/h
		Lauf 2:	*	*	*	* km/h	*	*	* km/h
		Lauf 3:	*	*	*	* km/h	*	*	* km/h

Sektorzeiten & Speeds - Gruppe E1/FS

Rg.	Nr.		Sektor 1 (15m)	Sektor 2 (15-50m)	Sektor 3	Speed Trap	Sektor 4	Laufzeit	Speed (Lauf)
38	484	FALLET Stefan		Mercedes Benz 190E Diebels					
		Lauf 1:	00:01.997	00:02.145	00:15.733	139,74 km/h	00:59.060	01:18.935	100,34 km/h
		Lauf 2:	00:01.830	00:02.069	00:15.172	142,62 km/h	00:57.853	01:16.924	102,96 km/h
		Lauf 3:	00:01.890	00:02.043	00:14.773	145,19 km/h	00:56.133	01:14.839	105,83 km/h
39	443	PEZZULLO Aldo		Fiat 126					
		Lauf 1:	00:01.973	00:02.138	00:17.357	118,40 km/h	01:02.039	01:23.507	94,84 km/h
		Lauf 2:	00:01.959	00:02.150	00:17.391	115,75 km/h	00:59.041	01:20.541	98,34 km/h
		Lauf 3:	00:01.902	00:02.154	00:17.361	116,96 km/h	00:57.405	01:18.822	100,48 km/h