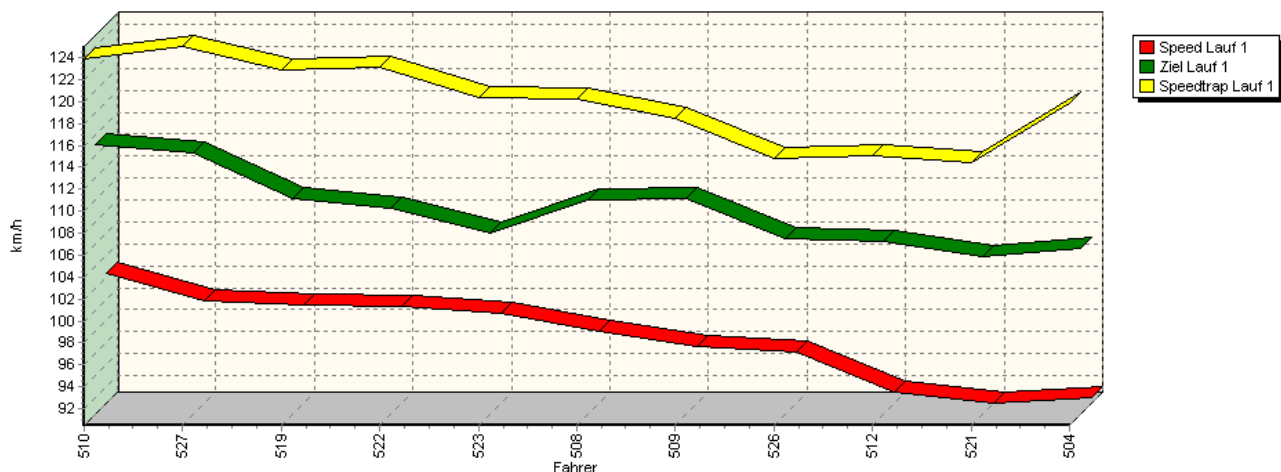
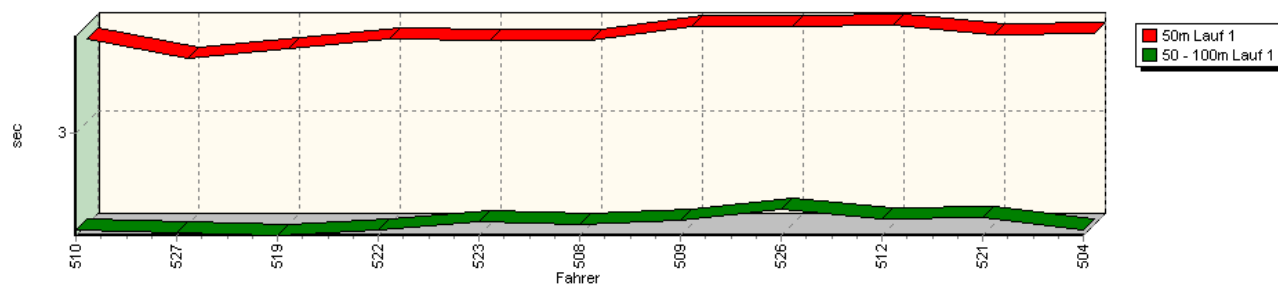


Sektorzeiten & Speeds - Rennen - Classic-Berg-Pokal NSU-Bergpokal - Klasse 9

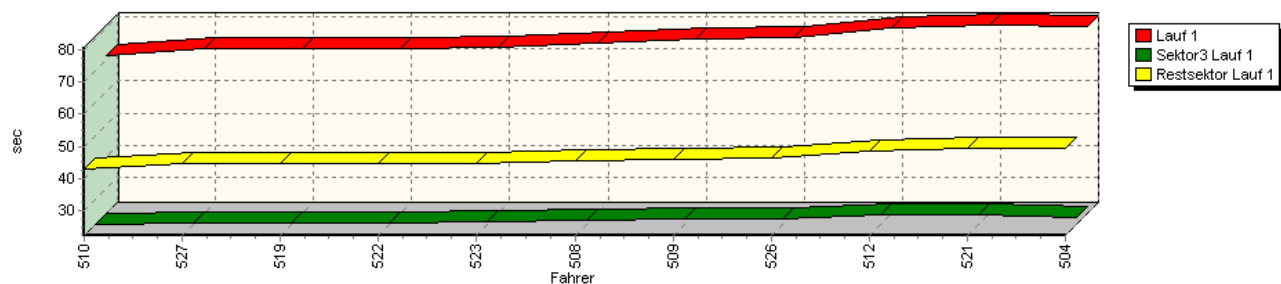
Speed-Diagramm Lauf 1



Sektor-Diagramm (Start) Lauf 1

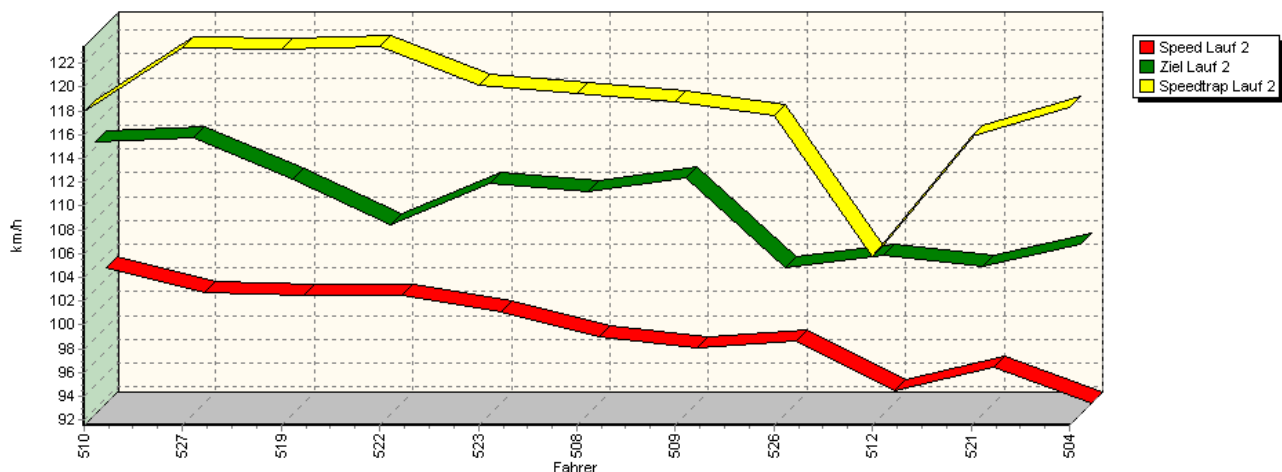


Sektor-Diagramm (Rest) Lauf 1

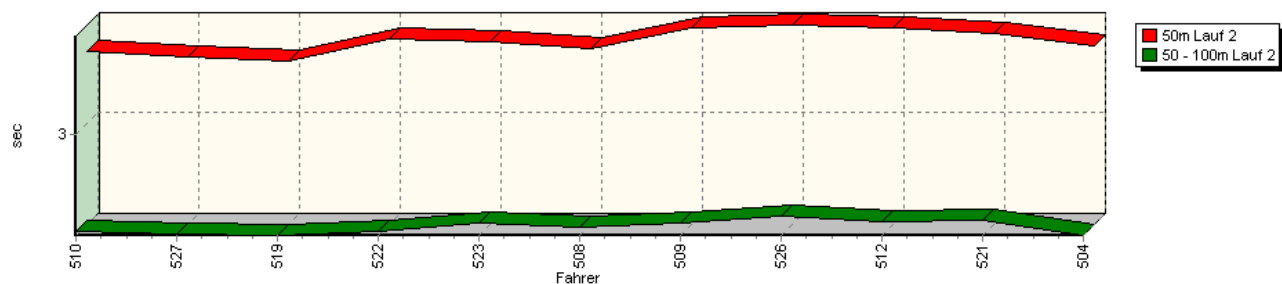


Sektorzeiten & Speeds - Rennen - Classic-Berg-Pokal NSU-Bergpokal - Klasse 9

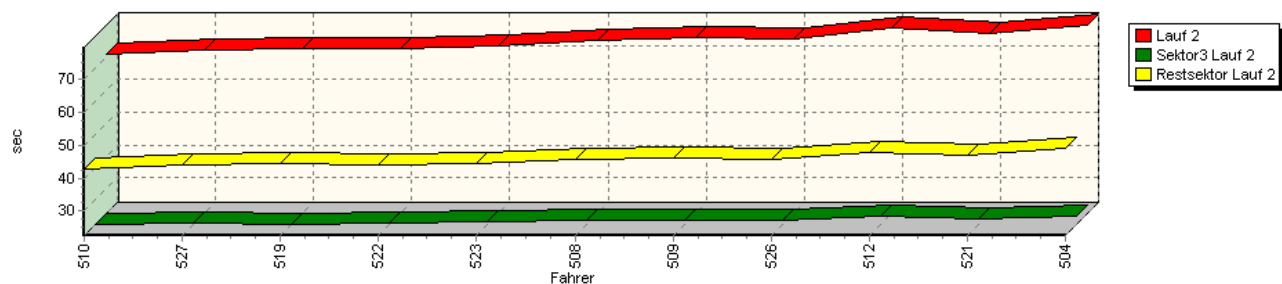
Speed-Diagramm Lauf 2



Sektor-Diagramm (Start) Lauf 2

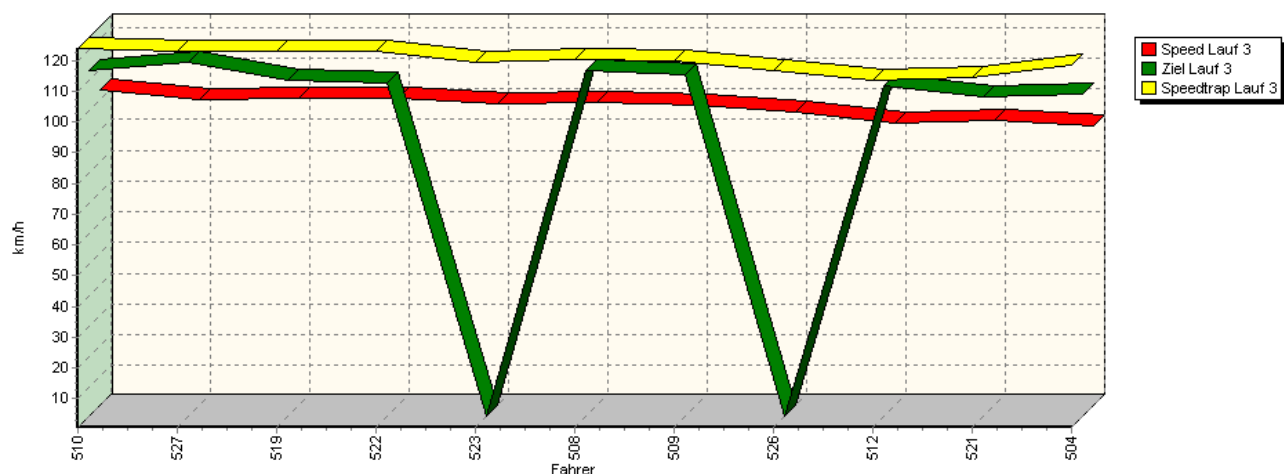


Sektor-Diagramm (Rest) Lauf 2

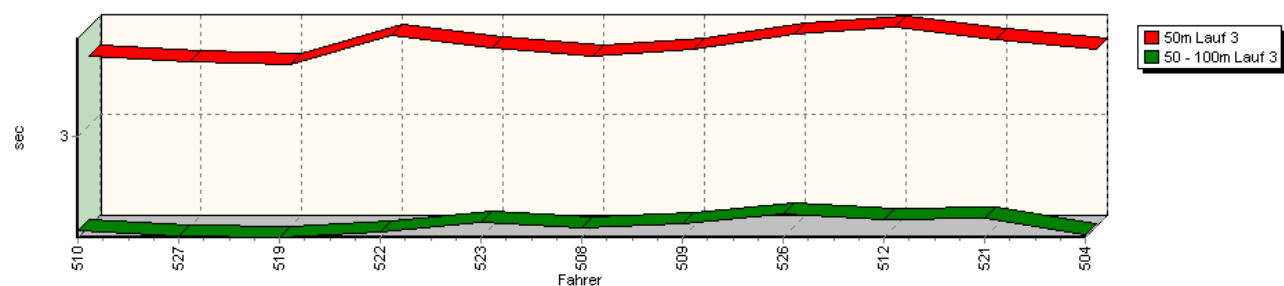


Sektorzeiten & Speeds - Rennen - Classic-Berg-Pokal NSU-Bergpokal - Klasse 9

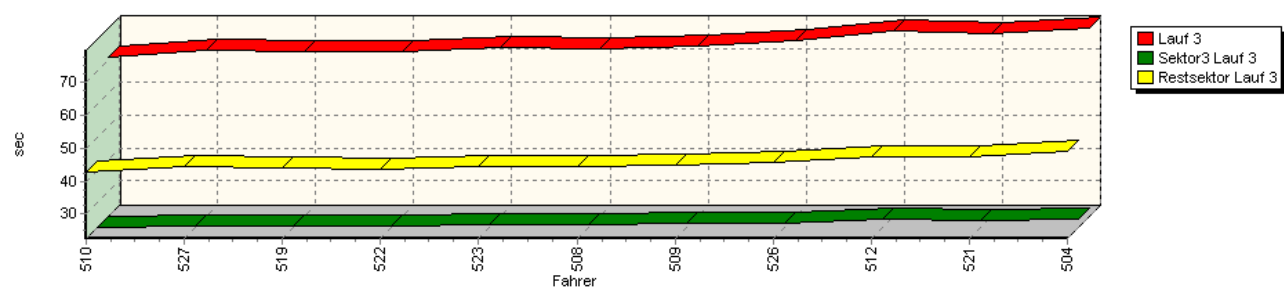
Speed-Diagramm Lauf 3



Sektor-Diagramm (Start) Lauf 3

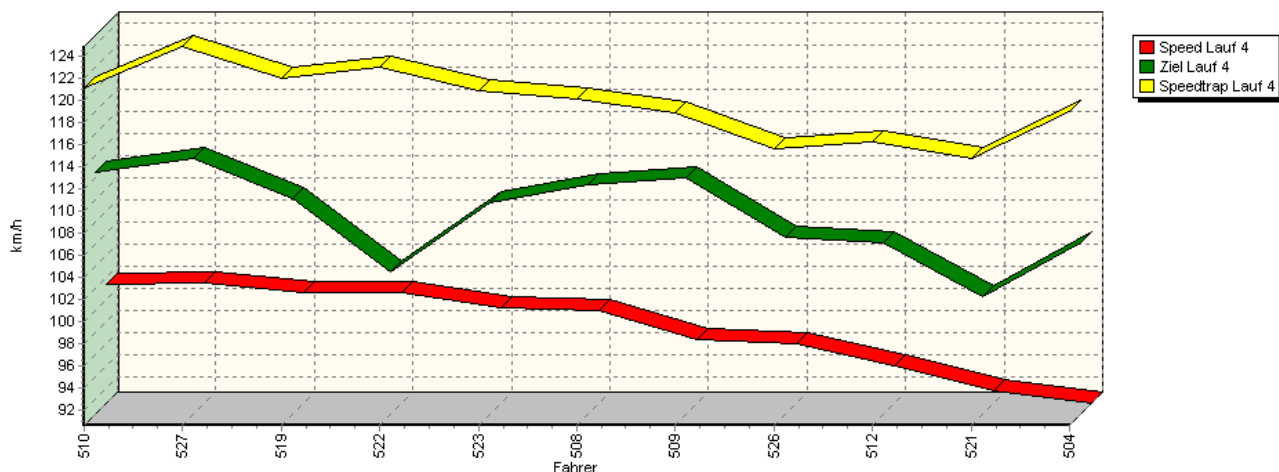


Sektor-Diagramm (Rest) Lauf 3

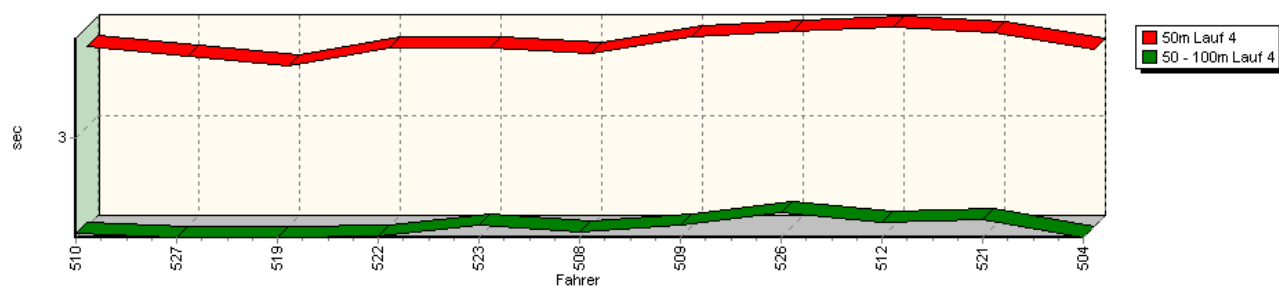


Sektorzeiten & Speeds - Rennen - Classic-Berg-Pokal NSU-Bergpokal - Klasse 9

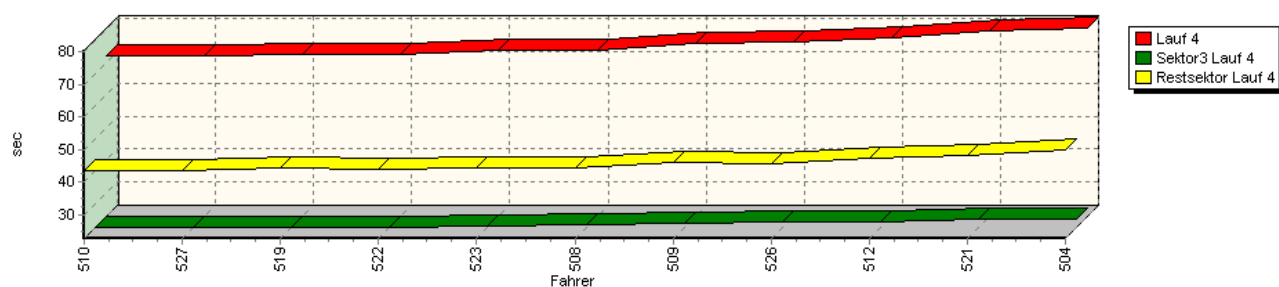
Speed-Diagramm Lauf 4



Sektor-Diagramm (Start) Lauf 4



Sektor-Diagramm (Rest) Lauf 4



Rg.	Nr.	Sektor 1 (50m)	Sektor 2 (50-100m)	Sektor 3	Speed Trap	Sektor 4	Speed (Ziel)	Laufzeit	Speed (Lauf)
1	510	HOFMANN Steffen		NSU TT					
		Lauf 1:	00:03.772	00:02.098	00:22.486	123,91 km/h	00:43.060	115,11 km/h	01:11.416
		Lauf 2:	00:03.667	00:02.104	00:22.560	117,99 km/h	00:42.624	114,48 km/h	01:10.955
		Lauf 3:	00:03.644	00:02.106	00:22.507	123,90 km/h	00:42.686	113,30 km/h	01:10.943
		Lauf 4:	00:03.743	00:02.110	00:22.720	121,15 km/h	00:43.552	112,46 km/h	01:12.125



43. Osnabrücker ADAC Bergrennen

21. und 22. August 2010

Deutsche Bergmeisterschaft 2010

DMSB Bergpokal für Tourenwagen und Rennsportfahrzeuge

DMSB Classic-Berg-Pokal - KW Gruppe H Berg-Cup



Sektorzeiten & Speeds - Rennen - Classic-Berg-Pokal NSU-Bergpokal - Klasse 9

Rg.	Nr.		Sektor 1 (50m)	Sektor 2 (50-100m)	Sektor 3	Speed Trap	Sektor 4	Speed (Ziel)	Laufzeit	Speed (Lauf)
2	527	KUHNERT Andreas	NSU KWR							
		Lauf 1:	00:03.592	00:02.073	00:22.834	125,02 km/h	00:44.759	114,37 km/h	01:13.258	99,76 km/h
		Lauf 2:	00:03.610	00:02.077	00:22.898	123,33 km/h	00:43.861	114,83 km/h	01:12.446	100,88 km/h
		Lauf 3:	00:03.597	00:02.057	00:22.958	122,92 km/h	00:44.355	115,66 km/h	01:12.967	100,15 km/h
		Lauf 4:	00:03.648	00:02.077	00:22.645	124,83 km/h	00:43.648	113,73 km/h	01:12.018	101,47 km/h
3	519	DAVIDOVIC Jörg	NSU TT							
		Lauf 1:	00:03.679	00:02.043	00:23.042	122,85 km/h	00:44.757	110,10 km/h	01:13.521	99,40 km/h
		Lauf 2:	00:03.572	00:02.073	00:22.711	123,14 km/h	00:44.256	111,32 km/h	01:12.612	100,65 km/h
		Lauf 3:	00:03.572	00:02.046	00:22.776	122,98 km/h	00:44.220	109,89 km/h	01:12.614	100,64 km/h
		Lauf 4:	00:03.566	00:02.073	00:22.845	121,97 km/h	00:44.185	110,16 km/h	01:12.669	100,57 km/h
4	522	KRYSTOFIAK Thomas	NSU 1200C							
		Lauf 1:	00:03.769	00:02.089	00:23.072	123,15 km/h	00:44.679	109,22 km/h	01:13.609	99,28 km/h
		Lauf 2:	00:03.779	00:02.105	00:22.844	123,42 km/h	00:43.876	107,54 km/h	01:12.604	100,66 km/h
		Lauf 3:	00:03.839	00:02.097	00:23.064	122,79 km/h	00:43.775	108,89 km/h	01:12.775	100,42 km/h
		Lauf 4:	00:03.733	00:02.080	00:22.825	122,95 km/h	00:43.952	103,50 km/h	01:12.590	100,68 km/h
5	523	KLEINEBERG Frank	NSU 1200 TT							
		Lauf 1:	00:03.750	00:02.175	00:23.474	120,33 km/h	00:44.639	106,95 km/h	01:14.038	98,71 km/h
		Lauf 2:	00:03.748	00:02.188	00:23.280	120,21 km/h	00:44.391	111,00 km/h	01:13.607	99,28 km/h
		Lauf 3:	00:03.725	00:02.185	00:23.391	119,29 km/h	00:44.564	0,77 km/h	01:13.865	98,94 km/h
		Lauf 4:	00:03.732	00:02.193	00:23.270	120,86 km/h	00:44.408	109,69 km/h	01:13.603	99,29 km/h
6	508	HOFMANN Lukas	NSU TT							
		Lauf 1:	00:03.753	00:02.142	00:23.621	120,24 km/h	00:45.764	110,06 km/h	01:15.280	97,08 km/h
		Lauf 2:	00:03.691	00:02.139	00:23.720	119,41 km/h	00:45.648	110,22 km/h	01:15.198	97,18 km/h
		Lauf 3:	00:03.648	00:02.131	00:23.439	120,09 km/h	00:44.336	113,14 km/h	01:13.554	99,35 km/h
		Lauf 4:	00:03.682	00:02.129	00:23.502	120,03 km/h	00:44.520	111,37 km/h	01:13.833	98,98 km/h
7	509	MEURER Karlheinz	NSU TT							
		Lauf 1:	00:03.878	00:02.179	00:24.215	118,49 km/h	00:46.128	110,14 km/h	01:16.400	95,65 km/h
		Lauf 2:	00:03.883	00:02.182	00:23.948	118,76 km/h	00:45.968	111,48 km/h	01:15.981	96,18 km/h
		Lauf 3:	00:03.720	00:02.170	00:23.642	119,71 km/h	00:44.966	111,90 km/h	01:14.498	98,10 km/h
		Lauf 4:	00:03.826	00:02.187	00:23.756	118,86 km/h	00:46.021	111,95 km/h	01:15.790	96,43 km/h
8	526	SCHMIDT Detlef	NSU Bandsch							
		Lauf 1:	00:03.880	00:02.282	00:24.243	114,87 km/h	00:46.389	106,52 km/h	01:16.794	95,16 km/h
		Lauf 2:	00:03.904	00:02.247	00:23.672	117,55 km/h	00:45.719	103,86 km/h	01:15.542	96,74 km/h
		Lauf 3:	00:03.864	00:02.269	00:23.930	116,50 km/h	00:45.895	0,76 km/h	01:15.958	96,21 km/h
		Lauf 4:	00:03.888	00:02.299	00:24.142	115,55 km/h	00:45.826	106,57 km/h	01:16.155	95,96 km/h
9	512	NEUNER Bernhard	NSU TT							
		Lauf 1:	00:03.897	00:02.201	00:25.381	115,12 km/h	00:48.422	106,30 km/h	01:19.901	91,46 km/h
		Lauf 2:	00:03.883	00:02.201	00:25.227	105,79 km/h	00:47.664	104,95 km/h	01:18.975	92,54 km/h
		Lauf 3:	00:03.923	00:02.214	00:25.235	113,60 km/h	00:47.494	108,25 km/h	01:18.866	92,66 km/h
		Lauf 4:	00:03.922	00:02.217	00:24.439	116,23 km/h	00:47.173	106,17 km/h	01:17.751	93,99 km/h
10	521	VOIGT Walter	NSU Spiess 1300 TT							
		Lauf 1:	00:03.809	00:02.210	00:25.418	114,43 km/h	00:49.312	104,82 km/h	01:20.749	90,50 km/h
		Lauf 2:	00:03.833	00:02.205	00:24.443	115,85 km/h	00:46.789	103,98 km/h	01:17.270	94,58 km/h
		Lauf 3:	00:03.804	00:02.232	00:24.734	114,63 km/h	00:47.507	104,60 km/h	01:18.277	93,36 km/h
		Lauf 4:	00:03.872	00:02.234	00:25.129	114,74 km/h	00:48.401	101,20 km/h	01:19.636	91,77 km/h



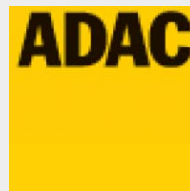
43. Osnabrücker ADAC Bergrennen

21. und 22. August 2010

Deutsche Bergmeisterschaft 2010

DMSB Bergpokal für Tourenwagen und Rennsportfahrzeuge

DMSB Classic-Berg-Pokal - KW Gruppe H Berg-Cup



Sektorzeiten & Speeds - Rennen - Classic-Berg-Pokal NSU-Bergpokal - Klasse 9

Rg.	Nr.		Sektor 1 (50m)	Sektor 2 (50-100m)	Sektor 3	Speed Trap	Sektor 4	Speed (Ziel)	Laufzeit	Speed (Lauf)
11	504	SZOTT Roman								
				NSU TT						
		Lauf 1:	00:03.814	00:02.094	00:24.729	119,90 km/h	00:49.645	105,59 km/h	01:20.282	91,03 km/h
		Lauf 2:	00:03.712	00:02.068	00:24.929	118,32 km/h	00:49.114	105,81 km/h	01:19.823	91,55 km/h
		Lauf 3:	00:03.710	00:02.068	00:24.872	118,54 km/h	00:49.248	105,35 km/h	01:19.898	91,47 km/h
		Lauf 4:	00:03.711	00:02.073	00:25.111	118,98 km/h	00:49.721	106,16 km/h	01:20.616	90,65 km/h