



## Int. 40. AvD/MSCR Hauenstein-Bergrennen

1. bis 2. August 2009

Deutsche Bergmeisterschaft / DMSB Bergpokal

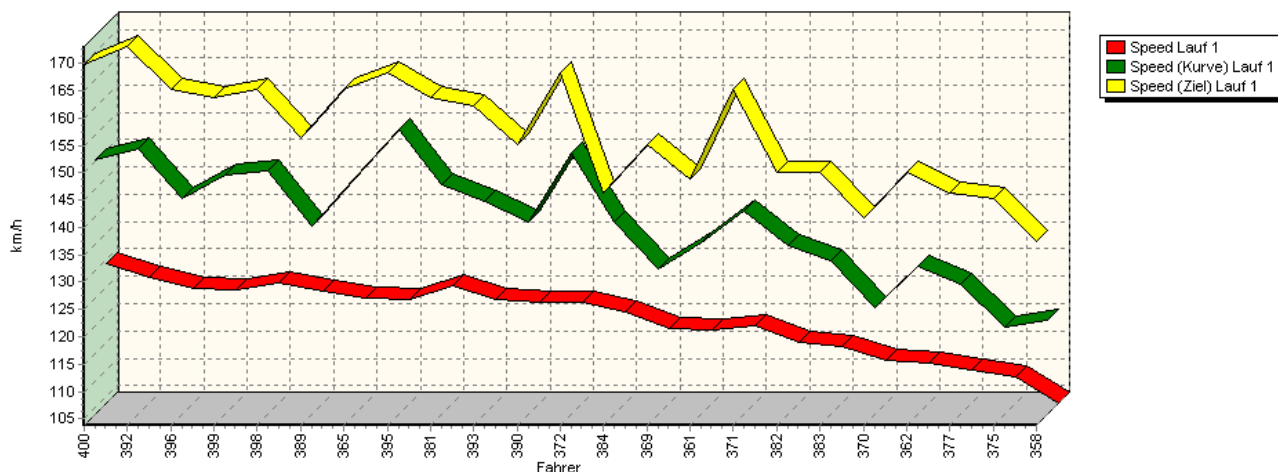
AvD Sportwagen-Berg-Cup / Classic Berg Cup

KW Gruppe H Berg-Cup

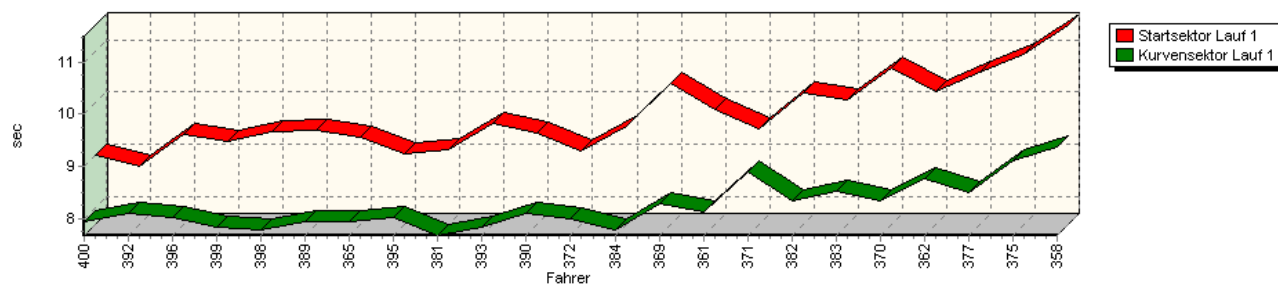


### Sektorzeiten & Speeds - Gruppe H bis 2000 ccm - Klasse 28

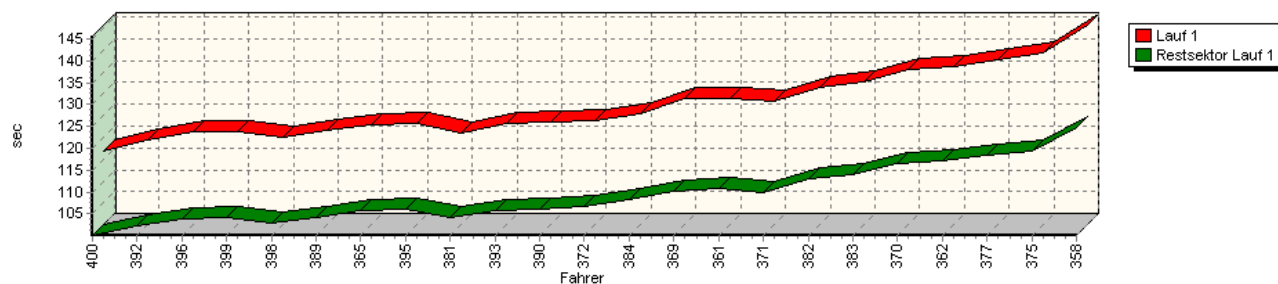
Speed-Diagramm Lauf 1



Sektor-Diagramm (Start) Lauf 1



Sektor-Diagramm (Rest) Lauf 1





## Int. 40. AvD/MSCR Hauenstein-Bergrennen

1. bis 2. August 2009

Deutsche Bergmeisterschaft / DMSB Bergpokal

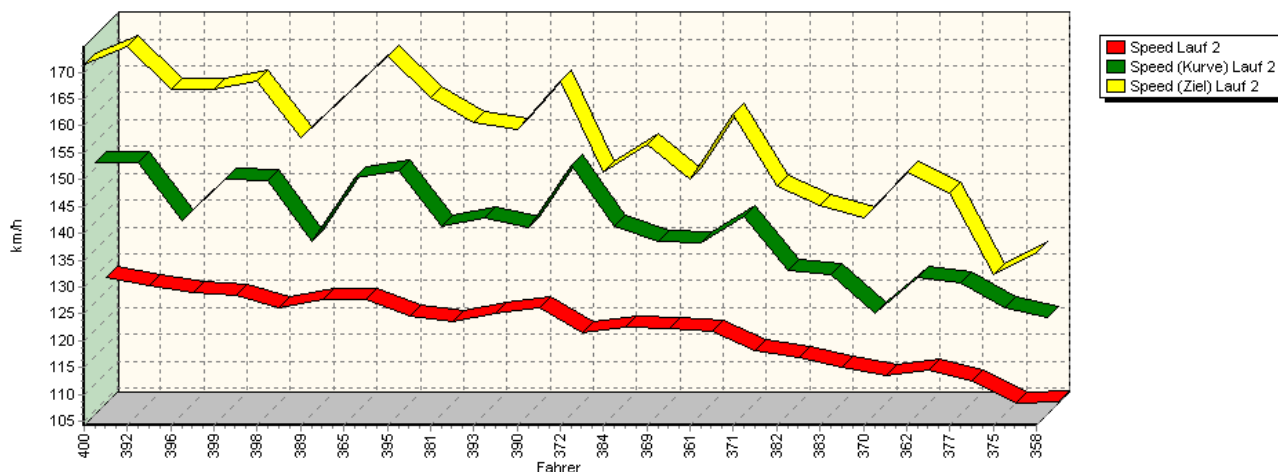
AvD Sportwagen-Berg-Cup / Classic Berg Cup

KW Gruppe H Berg-Cup

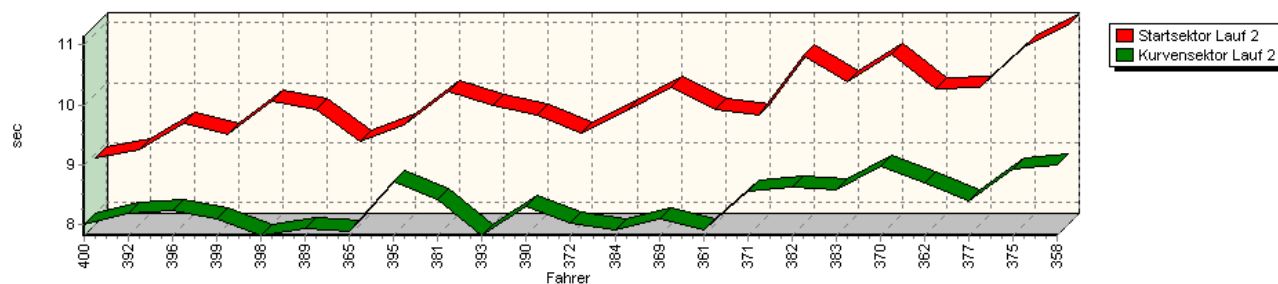


### Sektorzeiten & Speeds - Gruppe H bis 2000 ccm - Klasse 28

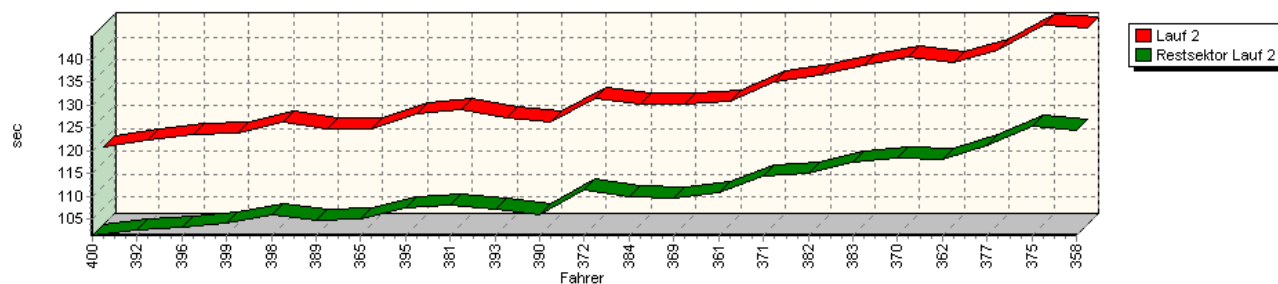
Speed-Diagramm Lauf 2



Sektor-Diagramm (Start) Lauf 2



Sektor-Diagramm (Rest) Lauf 2





# Int. 40. AvD/MSCR Hauenstein-Bergrennen

1. bis 2. August 2009

Deutsche Bergmeisterschaft / DMSB Bergpokal

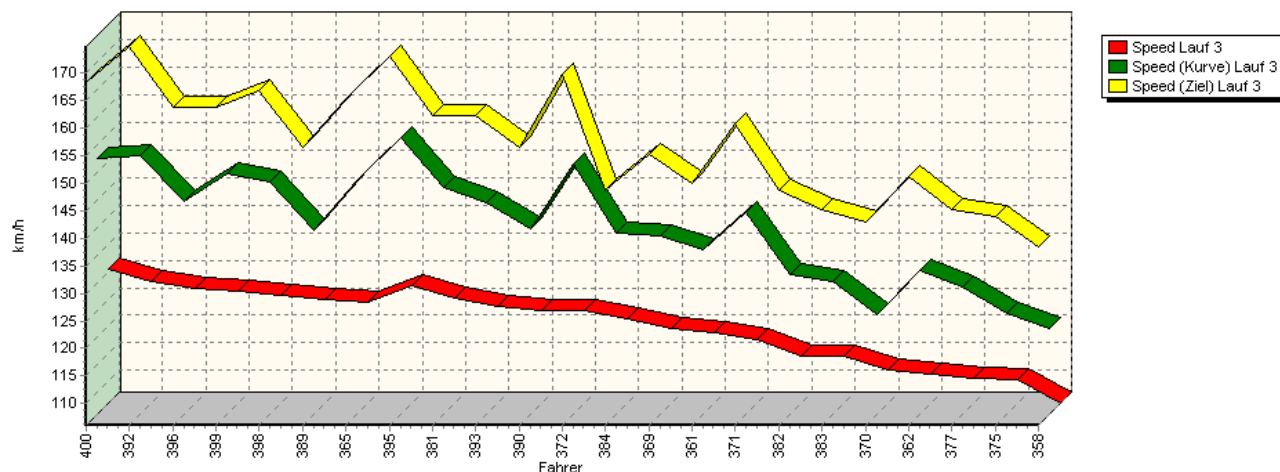
AvD Sportwagen-Berg-Cup / Classic Berg Cup

KW Gruppe H Berg-Cup

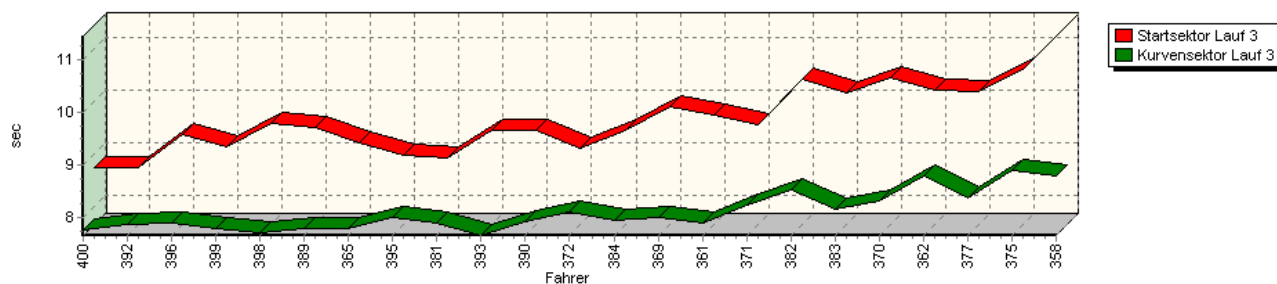


## Sektorzeiten & Speeds - Gruppe H bis 2000 ccm - Klasse 28

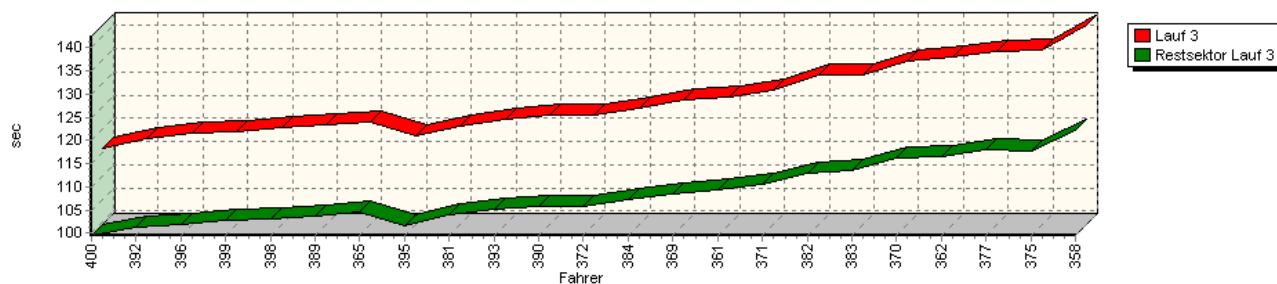
Speed-Diagramm Lauf 3



Sektor-Diagramm (Start) Lauf 3



Sektor-Diagramm (Rest) Lauf 3



Rg.	Nr.	Startsektor	Speed vor Kurve 90°Kurve	Restsektor	Speed Ziel	Laufzeit	Speed (Lauf)
1	400	<b>HOVEMANN Holger</b>					
		Lauf 1:	00:08.998	150,26 km/h	00:07.948	01:40.023	169,81 km/h
		Lauf 2:	00:08.929	150,98 km/h	00:07.998	01:41.456	171,43 km/h
		Lauf 3:	00:08.728	152,57 km/h	00:07.754	01:39.527	168,22 km/h



## Int. 40. AvD/MSCR Hauenstein-Bergrennen

1. bis 2. August 2009

Deutsche Bergmeisterschaft / DMSB Bergpokal

AvD Sportwagen-Berg-Cup / Classic Berg Cup

KW Gruppe H Berg-Cup



### Sektorzeiten & Speeds - Gruppe H bis 2000 ccm - Klasse 28

Rg.	Nr.	Startsektor	Speed vor Kurve 90°-Kurve		Restsektor	Speed Ziel	Laufzeit	Speed (Lauf)	
2	392	<b>SCHMITT Sebastian</b>	Opel Kadett C						
		Lauf 1:	00:08.788	152,24 km/h	00:08.097	01:42.383	173,08 km/h	01:59.268	126,77 km/h
		Lauf 2:	00:09.072	151,00 km/h	00:08.195	01:42.587	174,76 km/h	01:59.854	126,15 km/h
		Lauf 3:	00:08.737	153,06 km/h	00:07.871	01:41.423	174,76 km/h	01:58.031	128,10 km/h
3	396	<b>GÖSER Günter</b>	Opel Kadett C						
		Lauf 1:	00:09.393	143,15 km/h	00:08.017	01:43.725	165,14 km/h	02:01.135	124,82 km/h
		Lauf 2:	00:09.507	140,36 km/h	00:08.239	01:43.314	166,67 km/h	02:01.060	124,90 km/h
		Lauf 3:	00:09.370	144,64 km/h	00:07.899	01:41.836	163,64 km/h	01:59.105	126,95 km/h
4	399	<b>WIEBE Björn</b>	Renault Clio						
		Lauf 1:	00:09.262	147,59 km/h	00:07.832	01:44.265	163,64 km/h	02:01.359	124,59 km/h
		Lauf 2:	00:09.333	147,90 km/h	00:08.102	01:44.074	166,67 km/h	02:01.509	124,43 km/h
		Lauf 3:	00:09.139	149,63 km/h	00:07.798	01:42.728	163,64 km/h	01:59.665	126,35 km/h
5	398	<b>MINICHBERGER Mario</b>	VW Scirocco						
		Lauf 1:	00:09.456	148,19 km/h	00:07.786	01:42.887	165,14 km/h	02:00.129	125,86 km/h
		Lauf 2:	00:09.874	147,65 km/h	00:07.833	01:46.116	168,22 km/h	02:03.823	122,11 km/h
		Lauf 3:	00:09.577	148,10 km/h	00:07.702	01:43.071	166,67 km/h	02:00.350	125,63 km/h
6	389	<b>WIMMER Norbert</b>	BMW 2002						
		Lauf 1:	00:09.478	138,32 km/h	00:07.945	01:44.208	156,52 km/h	02:01.631	124,31 km/h
		Lauf 2:	00:09.736	136,53 km/h	00:07.939	01:44.657	157,89 km/h	02:02.332	123,60 km/h
		Lauf 3:	00:09.512	139,53 km/h	00:07.793	01:43.697	156,52 km/h	02:01.002	124,96 km/h
7	365	<b>WIEBE André</b>	Renault Megane						
		Lauf 1:	00:09.352	147,03 km/h	00:07.937	01:45.686	165,14 km/h	02:02.975	122,95 km/h
		Lauf 2:	00:09.202	148,30 km/h	00:07.884	01:45.146	165,14 km/h	02:02.232	123,70 km/h
		Lauf 3:	00:09.200	148,34 km/h	00:07.784	01:44.595	165,14 km/h	02:01.579	124,36 km/h
8	395	<b>ROTTENBERGER Dieter</b>	BMW E36						
		Lauf 1:	00:09.033	155,95 km/h	00:08.033	01:46.084	168,22 km/h	02:03.150	122,78 km/h
		Lauf 2:	00:09.474	149,64 km/h	00:08.721	01:47.431	173,08 km/h	02:05.626	120,36 km/h
		Lauf 3:	00:08.970	156,31 km/h	00:08.006	01:41.722	173,08 km/h	01:58.698	127,38 km/h
9	381	<b>GLAB Stefan</b>	Ford Escort						
		Lauf 1:	00:09.099	145,85 km/h	00:07.677	01:44.006	163,64 km/h	02:00.782	125,18 km/h
		Lauf 2:	00:10.034	139,39 km/h	00:08.415	01:48.229	165,14 km/h	02:06.678	119,36 km/h
		Lauf 3:	00:08.923	147,17 km/h	00:07.881	01:44.070	162,16 km/h	02:00.874	125,09 km/h
10	393	<b>FLIK Thomas</b>	Renault Clio Williams						
		Lauf 1:	00:09.624	142,82 km/h	00:07.824	01:45.732	162,16 km/h	02:03.180	122,75 km/h
		Lauf 2:	00:09.800	140,75 km/h	00:07.823	01:47.231	160,71 km/h	02:04.854	121,10 km/h
		Lauf 3:	00:09.445	144,51 km/h	00:07.656	01:45.123	162,16 km/h	02:02.224	123,71 km/h
11	390	<b>WEBER Jens</b>	Opel Kadett C						
		Lauf 1:	00:09.432	138,99 km/h	00:08.093	01:46.093	155,17 km/h	02:03.618	122,31 km/h
		Lauf 2:	00:09.655	138,89 km/h	00:08.296	01:45.895	159,29 km/h	02:03.846	122,09 km/h
		Lauf 3:	00:09.459	139,71 km/h	00:07.924	01:45.653	156,52 km/h	02:03.036	122,89 km/h
12	372	<b>GÖBEL Henning</b>	Opel Kadett C						
		Lauf 1:	00:09.086	151,47 km/h	00:07.983	01:46.679	168,22 km/h	02:03.748	122,18 km/h
		Lauf 2:	00:09.353	150,54 km/h	00:08.026	01:51.515	168,22 km/h	02:08.894	117,31 km/h
		Lauf 3:	00:09.098	151,52 km/h	00:08.111	01:45.798	169,81 km/h	02:03.007	122,92 km/h
13	384	<b>DANDL Michael</b>	BMW 320is						
		Lauf 1:	00:09.568	138,98 km/h	00:07.794	01:48.104	146,34 km/h	02:05.466	120,51 km/h
		Lauf 2:	00:09.709	139,18 km/h	00:07.912	01:50.071	151,26 km/h	02:07.692	118,41 km/h
		Lauf 3:	00:09.458	138,86 km/h	00:07.951	01:47.213	148,76 km/h	02:04.622	121,33 km/h



# Int. 40. AvD/MSCR Hauenstein-Bergrennen

1. bis 2. August 2009

Deutsche Bergmeisterschaft / DMSB Bergpokal

AvD Sportwagen-Berg-Cup / Classic Berg Cup

KW Gruppe H Berg-Cup



## Sektorzeiten & Speeds - Gruppe H bis 2000 ccm - Klasse 28

Rg.	Nr.	Startsektor	Speed vor Kurve 90°Kurve		Restsektor	Speed Ziel	Laufzeit	Speed (Lauf)	
14	369	<b>FRÖHLICH Werner</b>	BMW 320						
		Lauf 1:	00:10.392	130,31 km/h	00:08.295	01:50.059	155,17 km/h	02:08.746	117,44 km/h
		Lauf 2:	00:10.114	136,46 km/h	00:08.089	01:49.680	156,52 km/h	02:07.883	118,23 km/h
		Lauf 3:	00:09.907	138,40 km/h	00:08.007	01:48.475	155,17 km/h	02:06.389	119,63 km/h
15	361	<b>KRUHS Gino</b>	Renault Megane						
		Lauf 1:	00:09.876	135,16 km/h	00:08.126	01:50.856	148,76 km/h	02:08.858	117,34 km/h
		Lauf 2:	00:09.730	136,28 km/h	00:07.906	01:50.854	150,00 km/h	02:08.490	117,67 km/h
		Lauf 3:	00:09.729	135,95 km/h	00:07.897	01:49.479	150,00 km/h	02:07.105	118,96 km/h
16	371	<b>BEHR Martin</b>	BMW 2002						
		Lauf 1:	00:09.497	140,90 km/h	00:08.883	01:49.830	165,14 km/h	02:08.210	117,93 km/h
		Lauf 2:	00:09.650	141,19 km/h	00:08.571	01:54.465	162,16 km/h	02:12.686	113,95 km/h
		Lauf 3:	00:09.561	142,80 km/h	00:08.236	01:50.677	160,71 km/h	02:08.474	117,69 km/h
17	382	<b>PETER Guido</b>	VW Golf						
		Lauf 1:	00:10.195	134,67 km/h	00:08.330	01:52.976	150,00 km/h	02:11.501	114,98 km/h
		Lauf 2:	00:10.631	130,99 km/h	00:08.631	01:54.953	148,76 km/h	02:14.215	112,66 km/h
		Lauf 3:	00:10.426	131,52 km/h	00:08.535	01:52.938	148,76 km/h	02:11.899	114,63 km/h
18	383	<b>HAMETNER Walter</b>	VW Golf						
		Lauf 1:	00:10.054	131,84 km/h	00:08.527	01:53.938	150,00 km/h	02:12.519	114,10 km/h
		Lauf 2:	00:10.208	130,34 km/h	00:08.592	01:57.522	145,16 km/h	02:16.322	110,91 km/h
		Lauf 3:	00:10.159	130,24 km/h	00:08.164	01:53.541	145,16 km/h	02:11.864	114,66 km/h
19	370	<b>EHRET Christian</b>	Opel Ascona B						
		Lauf 1:	00:10.671	123,18 km/h	00:08.344	01:56.476	141,73 km/h	02:15.491	111,59 km/h
		Lauf 2:	00:10.659	123,14 km/h	00:08.973	01:58.498	142,86 km/h	02:18.130	109,46 km/h
		Lauf 3:	00:10.450	124,11 km/h	00:08.315	01:56.127	142,86 km/h	02:14.892	112,09 km/h
20	362	<b>MANTIK Hermann</b>							
		Lauf 1:	00:10.216	130,77 km/h	00:08.770	01:57.172	150,00 km/h	02:16.158	111,05 km/h
		Lauf 2:	00:10.083	129,67 km/h	00:08.695	01:57.952	151,26 km/h	02:16.730	110,58 km/h
		Lauf 3:	00:10.219	132,12 km/h	00:08.793	01:56.643	151,26 km/h	02:15.655	111,46 km/h
21	377	<b>LANG Bernhard</b>	Ford Escort						
		Lauf 1:	00:10.595	127,53 km/h	00:08.501	01:58.515	146,34 km/h	02:17.611	109,88 km/h
		Lauf 2:	00:10.116	128,60 km/h	00:08.409	02:01.095	147,54 km/h	02:19.620	108,29 km/h
		Lauf 3:	00:10.201	129,07 km/h	00:08.367	01:58.175	145,16 km/h	02:16.743	110,57 km/h
22	375	<b>GÜRTZGEN Friedhelm</b>	BMW 2002						
		Lauf 1:	00:10.948	119,76 km/h	00:09.105	01:59.201	145,16 km/h	02:19.254	108,58 km/h
		Lauf 2:	00:10.787	123,98 km/h	00:08.936	02:05.268	132,35 km/h	02:24.991	104,28 km/h
		Lauf 3:	00:10.618	124,43 km/h	00:08.909	01:57.628	144,00 km/h	02:17.155	110,24 km/h
23	358	<b>EULITZ Falk</b>	Renault Megane						
		Lauf 1:	00:11.492	120,89 km/h	00:09.366	02:04.785	137,40 km/h	02:25.643	103,82 km/h
		Lauf 2:	00:11.145	122,20 km/h	00:09.011	02:04.327	136,36 km/h	02:24.483	104,65 km/h
		Lauf 3:	00:11.455	121,53 km/h	00:08.803	02:02.264	138,46 km/h	02:22.522	106,09 km/h