



Int. 40. AvD/MSCR Hauenstein-Bergrennen

1. bis 2. August 2009

Deutsche Bergmeisterschaft / DMSB Bergpokal

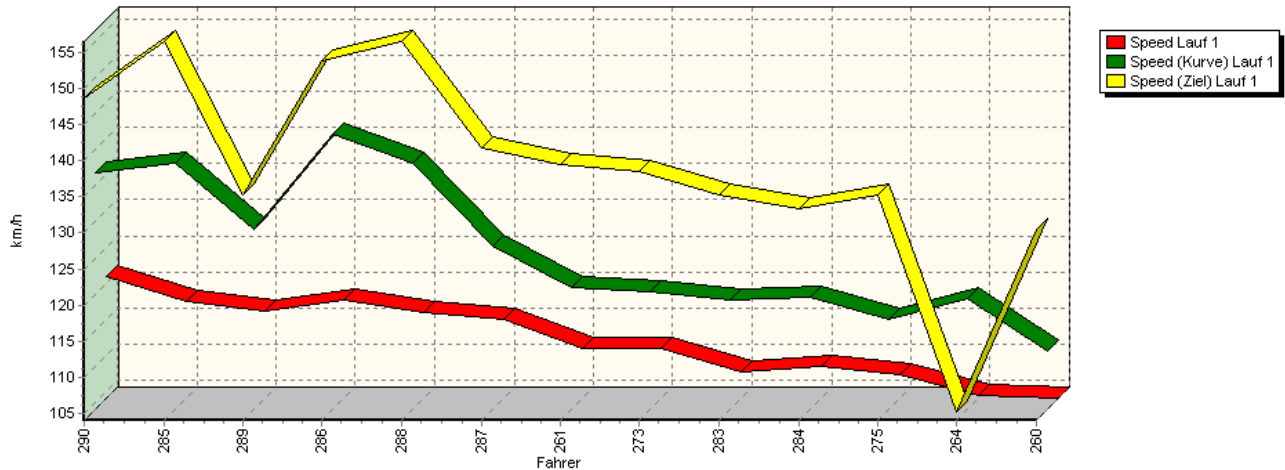
AvD Sportwagen-Berg-Cup / Classic Berg Cup

KW Gruppe H Berg-Cup

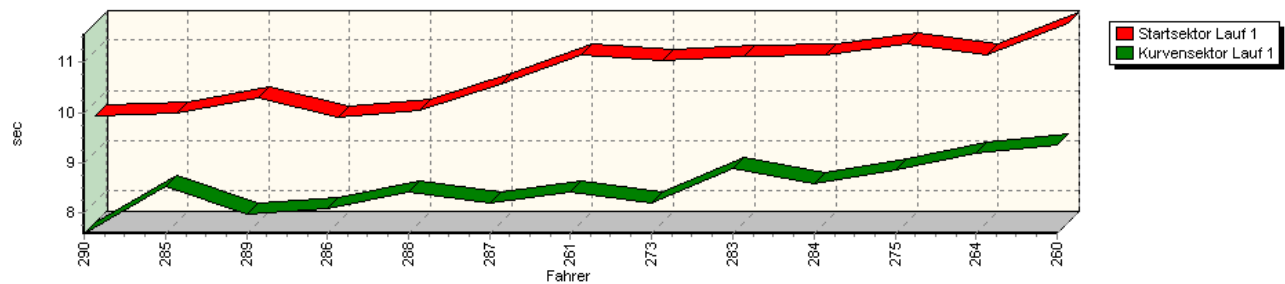


Sektorzeiten & Speeds - Gruppe H bis 1300 ccm - Klasse 26

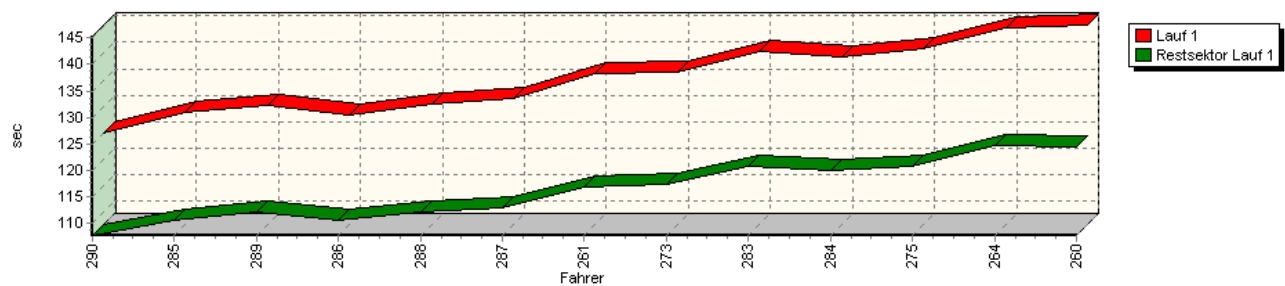
Speed-Diagramm Lauf 1



Sektor-Diagramm (Start) Lauf 1



Sektor-Diagramm (Rest) Lauf 1





Int. 40. AvD/MSCR Hauenstein-Bergrennen

1. bis 2. August 2009

Deutsche Bergmeisterschaft / DMSB Bergpokal

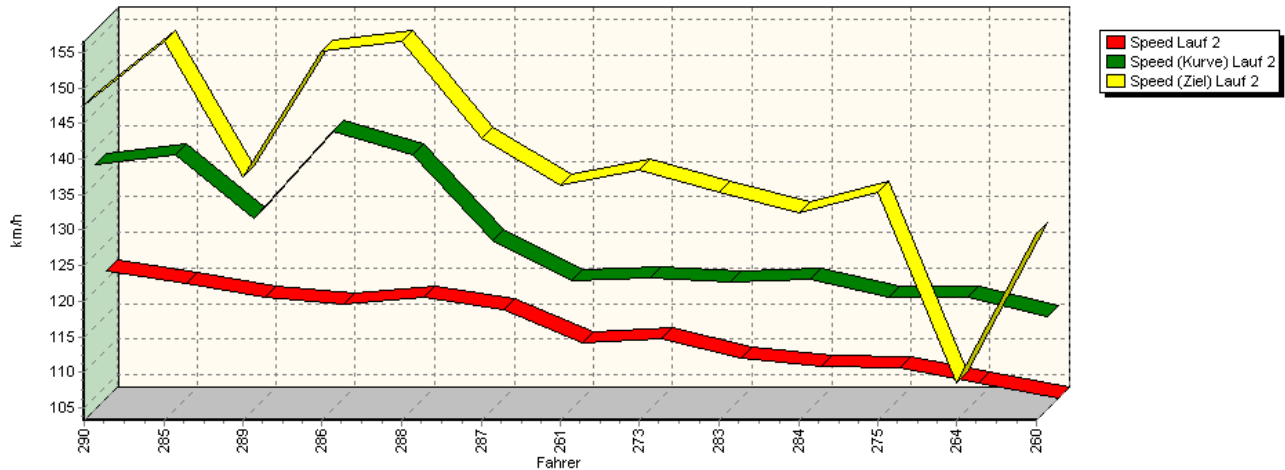
AvD Sportwagen-Berg-Cup / Classic Berg Cup

KW Gruppe H Berg-Cup

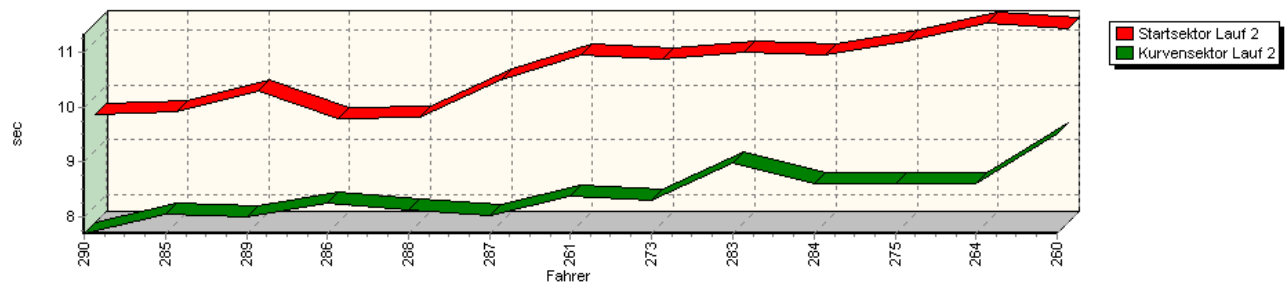


Sektorzeiten & Speeds - Gruppe H bis 1300 ccm - Klasse 26

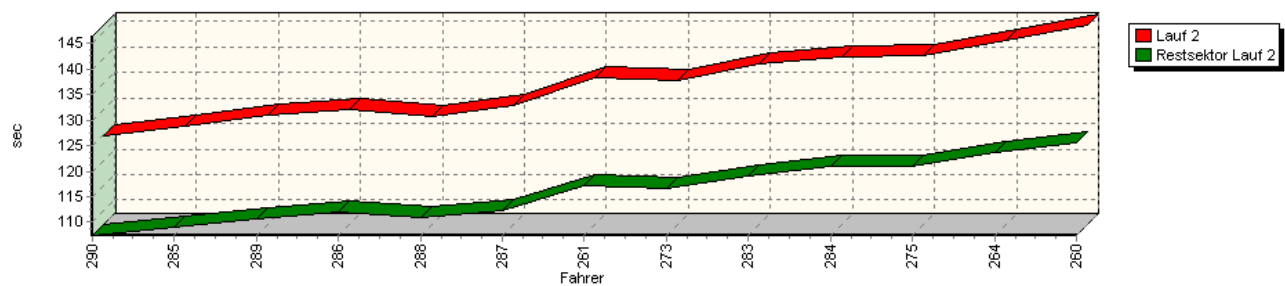
Speed-Diagramm Lauf 2



Sektor-Diagramm (Start) Lauf 2



Sektor-Diagramm (Rest) Lauf 2





Int. 40. AvD/MSCR Hauenstein-Bergrennen

1. bis 2. August 2009

Deutsche Bergmeisterschaft / DMSB Bergpokal

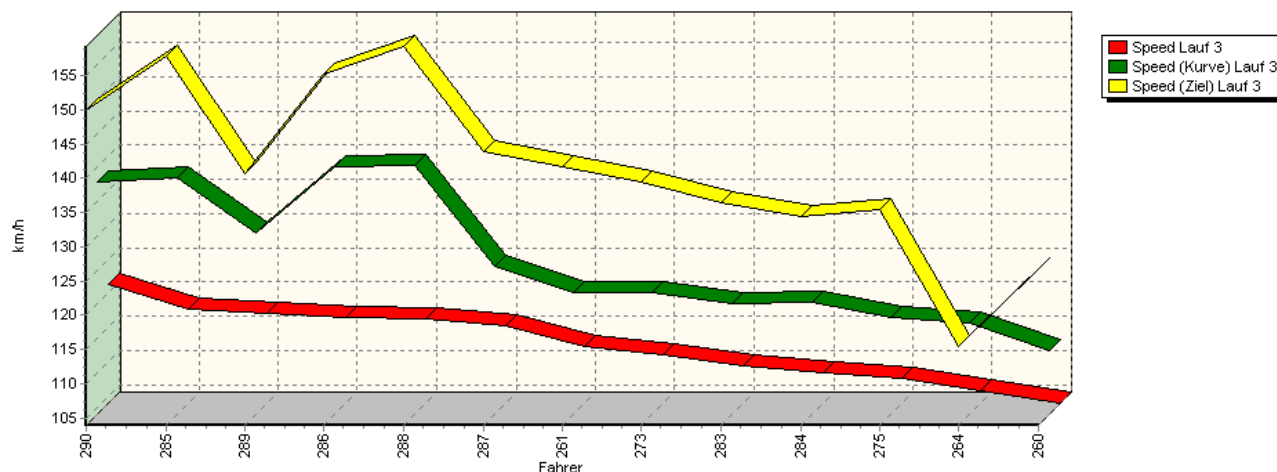
AvD Sportwagen-Berg-Cup / Classic Berg Cup

KW Gruppe H Berg-Cup

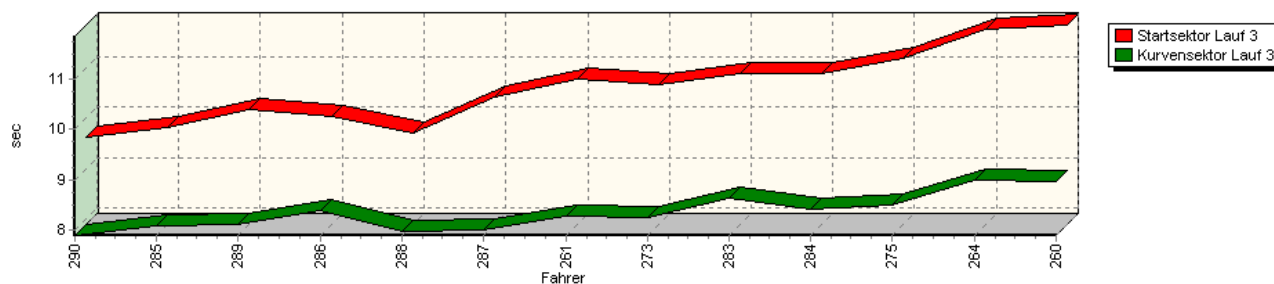


Sektorzeiten & Speeds - Gruppe H bis 1300 ccm - Klasse 26

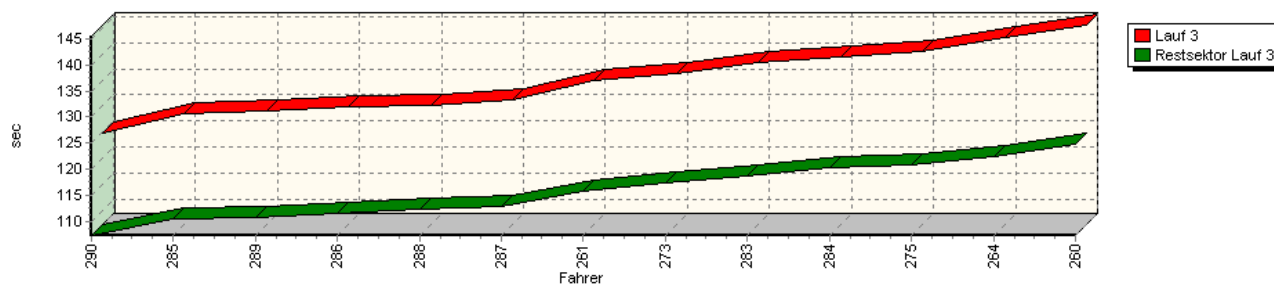
Speed-Diagramm Lauf 3



Sektor-Diagramm (Start) Lauf 3



Sektor-Diagramm (Rest) Lauf 3



| Rg. | Nr. | Startsektor | Speed vor Kurve | 90°Kurve | Restsektor | Speed Ziel | Laufzeit | Speed (Lauf) | |
|-----|-----|-------------------|-----------------|-------------|------------|------------|-------------|--------------|-------------|
| 1 | 290 | MOSER Hugo | | VW Polo | | | | | |
| | | Lauf 1: | 00:09.717 | 136,77 km/h | 00:07.578 | 01:47.718 | 148,76 km/h | 02:05.013 | 120,95 km/h |
| | | Lauf 2: | 00:09.677 | 137,71 km/h | 00:07.694 | 01:47.386 | 147,54 km/h | 02:04.757 | 121,20 km/h |
| | | Lauf 3: | 00:09.622 | 137,82 km/h | 00:07.904 | 01:47.229 | 150,00 km/h | 02:04.755 | 121,20 km/h |



Int. 40. AvD/MSCR Hauenstein-Bergrennen

1. bis 2. August 2009

Deutsche Bergmeisterschaft / DMSB Bergpokal

AvD Sportwagen-Berg-Cup / Classic Berg Cup

KW Gruppe H Berg-Cup



Sektorzeiten & Speeds - Gruppe H bis 1300 ccm - Klasse 26

| Rg. | Nr. | Startsektor | Speed vor Kurve 90°-Kurve | | Restsektor | Speed Ziel | Laufzeit | Speed (Lauf) | |
|-----|-----|---------------------------|---------------------------|-------------|------------|------------|-------------|--------------|-------------|
| 2 | 285 | KONRAD Manfred | VW Corrado | | | | | | |
| | | Lauf 1: | 00:09.769 | 138,04 km/h | 00:08.509 | 01:50.480 | 156,52 km/h | 02:08.758 | 117,43 km/h |
| | | Lauf 2: | 00:09.711 | 138,97 km/h | 00:08.039 | 01:48.969 | 156,52 km/h | 02:06.719 | 119,32 km/h |
| | | Lauf 3: | 00:09.829 | 138,44 km/h | 00:08.101 | 01:50.516 | 157,89 km/h | 02:08.446 | 117,71 km/h |
| 3 | 289 | EBENHÖH Armin | VW Polo | | | | | | |
| | | Lauf 1: | 00:10.067 | 128,99 km/h | 00:07.964 | 01:52.275 | 135,34 km/h | 02:10.306 | 116,03 km/h |
| | | Lauf 2: | 00:10.100 | 130,01 km/h | 00:07.991 | 01:50.651 | 137,40 km/h | 02:08.742 | 117,44 km/h |
| | | Lauf 3: | 00:10.175 | 130,32 km/h | 00:08.129 | 01:50.798 | 140,62 km/h | 02:09.102 | 117,12 km/h |
| 4 | 286 | KLEINER Martin | VW Polo | | | | | | |
| | | Lauf 1: | 00:09.689 | 142,06 km/h | 00:08.080 | 01:50.693 | 153,85 km/h | 02:08.462 | 117,70 km/h |
| | | Lauf 2: | 00:09.588 | 142,29 km/h | 00:08.263 | 01:52.078 | 155,17 km/h | 02:09.929 | 116,37 km/h |
| | | Lauf 3: | 00:10.029 | 140,18 km/h | 00:08.384 | 01:51.524 | 155,17 km/h | 02:09.937 | 116,36 km/h |
| 5 | 288 | STELBERG Andre | VW Polo | | | | | | |
| | | Lauf 1: | 00:09.813 | 138,05 km/h | 00:08.413 | 01:52.198 | 156,52 km/h | 02:10.424 | 115,93 km/h |
| | | Lauf 2: | 00:09.628 | 139,00 km/h | 00:08.129 | 01:50.901 | 156,52 km/h | 02:08.658 | 117,52 km/h |
| | | Lauf 3: | 00:09.696 | 140,38 km/h | 00:07.996 | 01:52.339 | 159,29 km/h | 02:10.031 | 116,28 km/h |
| 6 | 287 | LETMADE Bernd | VW Polo | | | | | | |
| | | Lauf 1: | 00:10.348 | 126,60 km/h | 00:08.197 | 01:52.937 | 141,73 km/h | 02:11.482 | 115,00 km/h |
| | | Lauf 2: | 00:10.307 | 126,94 km/h | 00:08.013 | 01:52.360 | 142,86 km/h | 02:10.680 | 115,70 km/h |
| | | Lauf 3: | 00:10.418 | 125,61 km/h | 00:08.026 | 01:52.766 | 144,00 km/h | 02:11.210 | 115,23 km/h |
| 7 | 261 | ROCHLITZ Benjamin | VW Polo | | | | | | |
| | | Lauf 1: | 00:10.939 | 120,94 km/h | 00:08.417 | 01:56.846 | 139,53 km/h | 02:16.202 | 111,01 km/h |
| | | Lauf 2: | 00:10.766 | 121,38 km/h | 00:08.372 | 01:57.121 | 136,36 km/h | 02:16.259 | 110,97 km/h |
| | | Lauf 3: | 00:10.777 | 121,63 km/h | 00:08.291 | 01:55.774 | 141,73 km/h | 02:14.842 | 112,13 km/h |
| 8 | 273 | HÖRNIG Christof | VW Polo | | | | | | |
| | | Lauf 1: | 00:10.811 | 120,23 km/h | 00:08.186 | 01:57.376 | 138,46 km/h | 02:16.373 | 110,87 km/h |
| | | Lauf 2: | 00:10.675 | 121,66 km/h | 00:08.306 | 01:56.530 | 138,46 km/h | 02:15.511 | 111,58 km/h |
| | | Lauf 3: | 00:10.660 | 121,62 km/h | 00:08.264 | 01:57.354 | 139,53 km/h | 02:16.278 | 110,95 km/h |
| 9 | 283 | VITT Holger | VW Polo | | | | | | |
| | | Lauf 1: | 00:10.900 | 119,24 km/h | 00:08.868 | 02:00.743 | 135,34 km/h | 02:20.511 | 107,61 km/h |
| | | Lauf 2: | 00:10.803 | 121,06 km/h | 00:08.993 | 01:59.052 | 135,34 km/h | 02:18.848 | 108,90 km/h |
| | | Lauf 3: | 00:10.877 | 119,99 km/h | 00:08.655 | 01:58.775 | 136,36 km/h | 02:18.307 | 109,32 km/h |
| 10 | 284 | SMYREK Jörg | Audi 50 | | | | | | |
| | | Lauf 1: | 00:10.922 | 119,48 km/h | 00:08.571 | 01:59.973 | 133,33 km/h | 02:19.466 | 108,41 km/h |
| | | Lauf 2: | 00:10.766 | 121,44 km/h | 00:08.596 | 02:00.895 | 132,35 km/h | 02:20.257 | 107,80 km/h |
| | | Lauf 3: | 00:10.894 | 120,28 km/h | 00:08.430 | 02:00.143 | 134,33 km/h | 02:19.467 | 108,41 km/h |
| 11 | 275 | DINGERDISSEN Uwe | VW Polo | | | | | | |
| | | Lauf 1: | 00:11.161 | 116,54 km/h | 00:08.857 | 02:00.828 | 135,34 km/h | 02:20.846 | 107,35 km/h |
| | | Lauf 2: | 00:11.008 | 118,91 km/h | 00:08.602 | 02:00.954 | 135,34 km/h | 02:20.564 | 107,57 km/h |
| | | Lauf 3: | 00:11.172 | 118,04 km/h | 00:08.512 | 02:00.836 | 135,34 km/h | 02:20.520 | 107,60 km/h |
| 12 | 264 | TRACHSEL Walter | VW Polo | | | | | | |
| | | Lauf 1: | 00:10.938 | 119,38 km/h | 00:09.185 | 02:04.587 | 105,26 km/h | 02:24.710 | 104,48 km/h |
| | | Lauf 2: | 00:11.341 | 119,05 km/h | 00:08.595 | 02:03.636 | 108,43 km/h | 02:23.572 | 105,31 km/h |
| | | Lauf 3: | 00:11.769 | 117,15 km/h | 00:08.987 | 02:02.310 | 115,38 km/h | 02:23.066 | 105,69 km/h |
| 13 | 260 | EBERHARDT Stefanie | VW Polo | | | | | | |
| | | Lauf 1: | 00:11.564 | 112,03 km/h | 00:09.352 | 02:04.432 | 130,43 km/h | 02:25.348 | 104,03 km/h |
| | | Lauf 2: | 00:11.249 | 116,29 km/h | 00:09.529 | 02:05.672 | 129,50 km/h | 02:26.450 | 103,24 km/h |
| | | Lauf 3: | 00:11.840 | 113,23 km/h | 00:08.960 | 02:04.733 | 126,76 km/h | 02:25.533 | 103,89 km/h |