



# Int. 39. AvD/MSCR Hauenstein-Bergrennen

2. bis 3. August 2008

Deutsche Bergmeisterschaft / DMSB Bergpokal

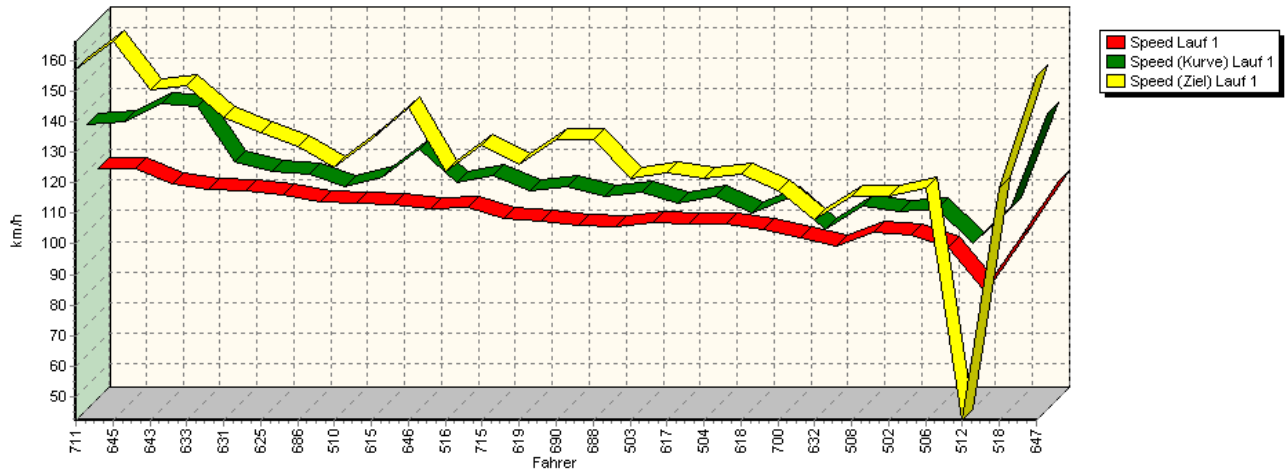
AvD Sportwagen-Berg-Cup / Classic Berg Cup

KW Gruppe H Berg-Cup

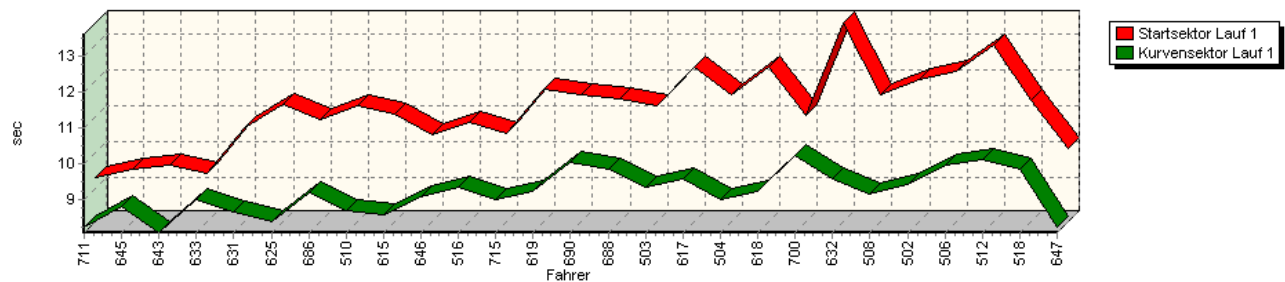


## Sektorzeiten & Speeds - Gruppe CBC

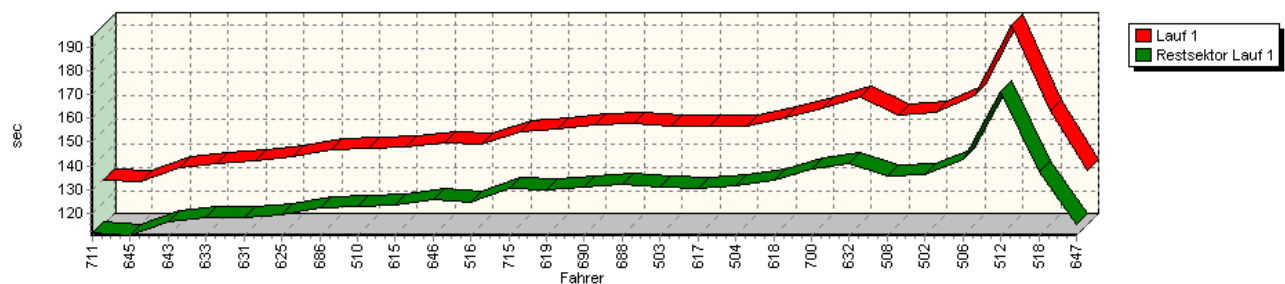
Speed-Diagramm Lauf 1



Sektor-Diagramm (Start) Lauf 1



Sektor-Diagramm (Rest) Lauf 1





# Int. 39. AvD/MSCR Hauenstein-Bergrennen

2. bis 3. August 2008

Deutsche Bergmeisterschaft / DMSB Bergpokal

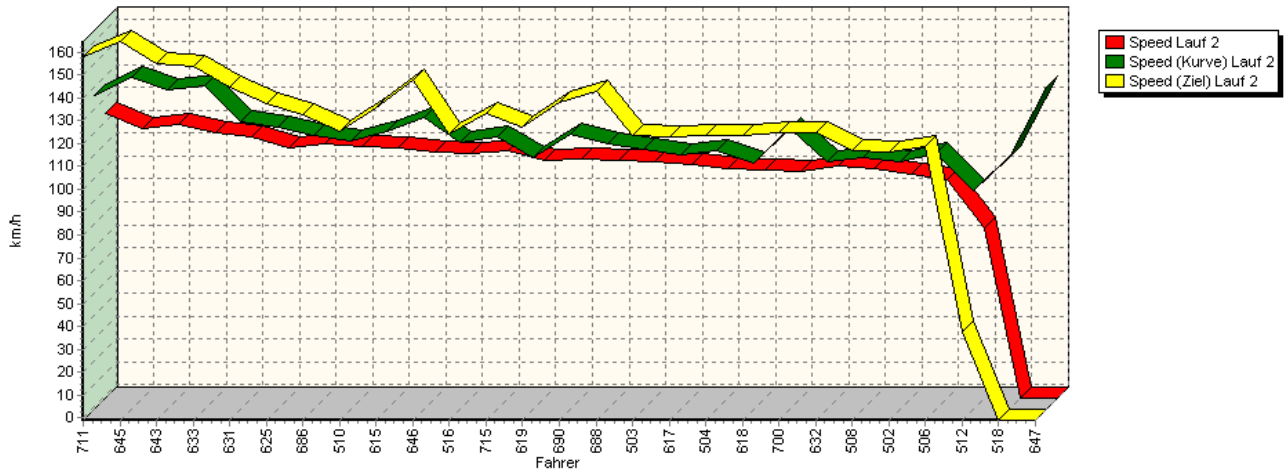
AvD Sportwagen-Berg-Cup / Classic Berg Cup

KW Gruppe H Berg-Cup

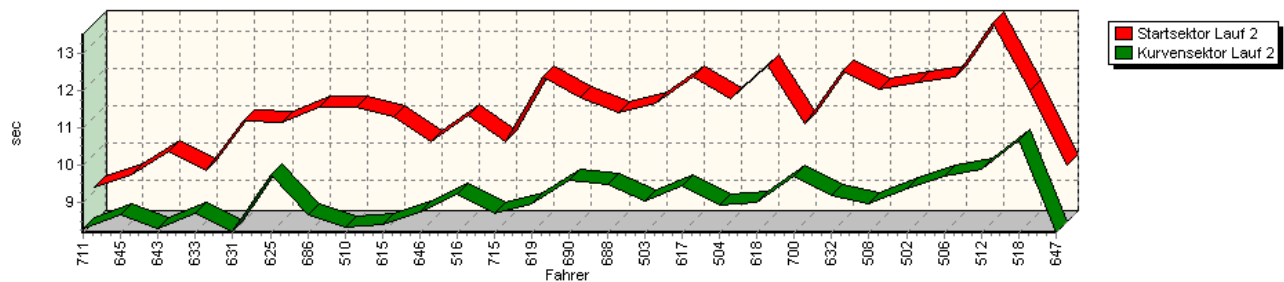


## Sektorzeiten & Speeds - Gruppe CBC

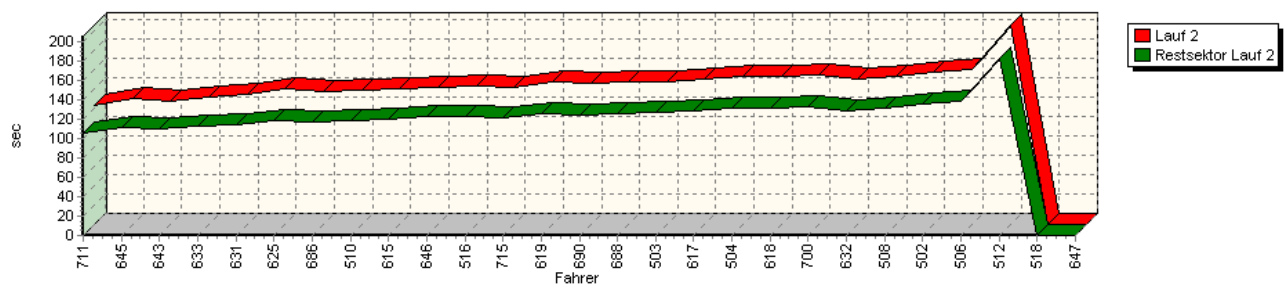
Speed-Diagramm Lauf 2



Sektor-Diagramm (Start) Lauf 2



Sektor-Diagramm (Rest) Lauf 2





# Int. 39. AvD/MSCR Hauenstein-Bergrennen

2. bis 3. August 2008

Deutsche Bergmeisterschaft / DMSB Bergpokal

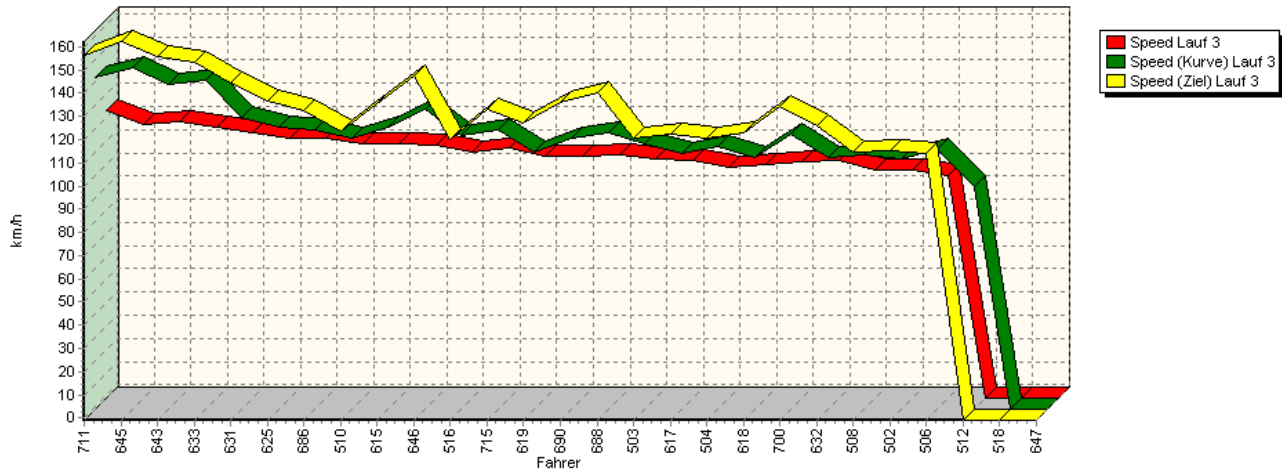
AvD Sportwagen-Berg-Cup / Classic Berg Cup

KW Gruppe H Berg-Cup

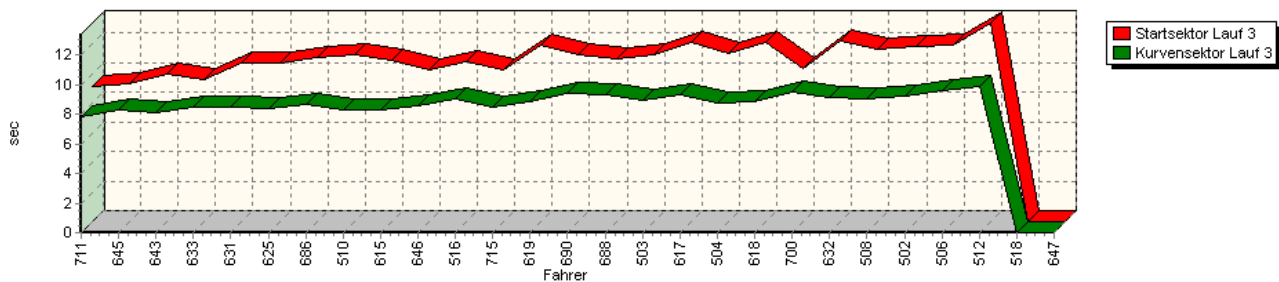


## Sektorzeiten & Speeds - Gruppe CBC

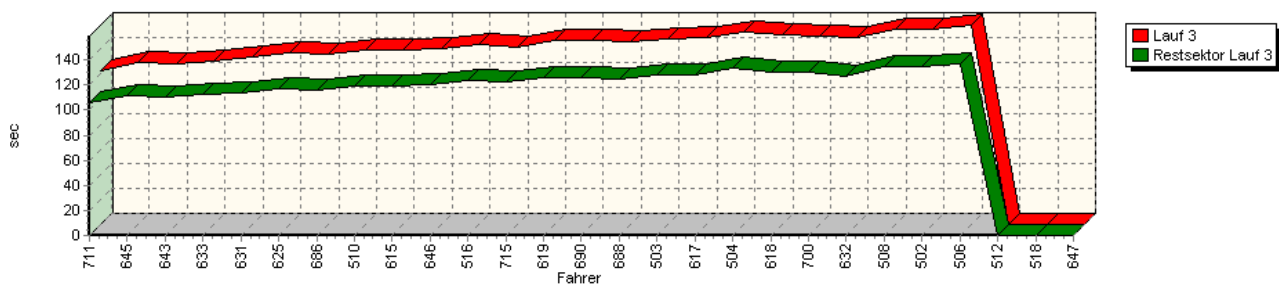
Speed-Diagramm Lauf 3



Sektor-Diagramm (Start) Lauf 3



Sektor-Diagramm (Rest) Lauf 3



Rg.	Nr.	Startsektor	Speed vor Kurve	90°Kurve	Restsektor	Speed Ziel	Laufzeit	Speed (Lauf)	
1	711	<b>FEULNER Richard</b>		Chevron Toyota					
		Lauf 1:	00:09.299	135,39 km/h	00:08.230	01:51.503	157,08 km/h	02:09.034	117,18 km/h
		Lauf 2:	00:09.113	136,27 km/h	00:08.309	01:45.226	158,24 km/h	02:02.650	123,28 km/h
		Lauf 3:	00:09.104	141,92 km/h	00:07.829	01:45.718	156,22 km/h	02:02.653	123,28 km/h



## Int. 39. AvD/MSCR Hauenstein-Bergrennen

2. bis 3. August 2008

Deutsche Bergmeisterschaft / DMSB Bergpokal

AvD Sportwagen-Berg-Cup / Classic Berg Cup

KW Gruppe H Berg-Cup



### Sektorzeiten & Speeds - Gruppe CBC

Rg.	Nr.	Startsektor	Speed vor Kurve 90°Kurve		Restsektor	Speed Ziel	Laufzeit	Speed (Lauf)	
2	645	<b>RESS Axel</b>	Renault Alpine						
		Lauf 1:	00:09.565	136,31 km/h	00:08.823	01:50.592	166,10 km/h	02:08.981	117,23 km/h
		Lauf 2:	00:09.464	144,21 km/h	00:08.659	01:51.501	164,64 km/h	02:09.626	116,64 km/h
		Lauf 3:	00:09.370	146,28 km/h	00:08.314	01:51.681	162,33 km/h	02:09.366	116,88 km/h
3	643	<b>KOLB Christian</b>	BMW E21						
		Lauf 1:	00:09.659	141,98 km/h	00:08.092	01:56.687	150,33 km/h	02:14.439	112,47 km/h
		Lauf 2:	00:10.081	138,74 km/h	00:08.304	01:49.174	154,71 km/h	02:07.561	118,53 km/h
		Lauf 3:	00:09.966	139,33 km/h	00:08.146	01:50.036	155,49 km/h	02:08.149	117,99 km/h
4	633	<b>ECK Karl-Heinz</b>	Ford Escort						
		Lauf 1:	00:09.447	141,12 km/h	00:09.009	01:58.034	151,53 km/h	02:16.492	110,78 km/h
		Lauf 2:	00:09.548	140,40 km/h	00:08.696	01:52.824	153,85 km/h	02:11.069	115,36 km/h
		Lauf 3:	00:09.658	140,73 km/h	00:08.511	01:52.140	153,66 km/h	02:10.311	116,03 km/h
5	631	<b>HERL Andreas</b>	Ford Escort						
		Lauf 1:	00:10.688	123,26 km/h	00:08.666	01:57.932	141,27 km/h	02:17.287	110,13 km/h
		Lauf 2:	00:10.883	124,53 km/h	00:08.227	01:54.405	144,95 km/h	02:13.516	113,25 km/h
		Lauf 3:	00:10.747	124,73 km/h	00:08.495	01:54.020	144,15 km/h	02:13.265	113,46 km/h
6	625	<b>ROST Siegfried</b>	Audi 50						
		Lauf 1:	00:11.355	120,21 km/h	00:08.386	01:59.421	136,49 km/h	02:19.164	108,65 km/h
		Lauf 2:	00:10.859	122,48 km/h	00:09.724	01:58.550	137,63 km/h	02:19.134	108,67 km/h
		Lauf 3:	00:10.762	120,58 km/h	00:08.445	01:57.213	136,71 km/h	02:16.421	110,83 km/h
7	686	<b>FRÖHLICH Tim</b>	Renault Alpine 110						
		Lauf 1:	00:10.942	118,94 km/h	00:09.207	02:02.088	131,73 km/h	02:22.238	106,30 km/h
		Lauf 2:	00:11.260	118,88 km/h	00:08.682	01:56.909	132,75 km/h	02:16.852	110,48 km/h
		Lauf 3:	00:11.105	119,12 km/h	00:08.659	01:56.071	132,67 km/h	02:15.837	111,31 km/h
8	510	<b>HOFMANN Steffen</b>	NSU TT Edelhäuser						
		Lauf 1:	00:11.317	115,05 km/h	00:08.722	02:02.786	125,00 km/h	02:22.827	105,86 km/h
		Lauf 2:	00:11.272	116,01 km/h	00:08.357	01:59.073	125,57 km/h	02:18.703	109,01 km/h
		Lauf 3:	00:11.289	115,96 km/h	00:08.336	01:59.320	123,72 km/h	02:18.946	108,82 km/h
9	615	<b>MÖRZL Christian</b>	Talbot Rallye						
		Lauf 1:	00:11.069	118,28 km/h	00:08.575	02:03.655	133,90 km/h	02:23.300	105,51 km/h
		Lauf 2:	00:11.013	120,32 km/h	00:08.400	02:00.296	135,48 km/h	02:19.710	108,22 km/h
		Lauf 3:	00:10.916	120,43 km/h	00:08.322	01:59.626	135,50 km/h	02:18.866	108,88 km/h
10	646	<b>NEUROHR Heinz</b>	Renault Alpine 310						
		Lauf 1:	00:10.487	127,08 km/h	00:09.069	02:05.685	144,57 km/h	02:25.243	104,10 km/h
		Lauf 2:	00:10.344	126,83 km/h	00:08.743	02:02.500	147,89 km/h	02:21.589	106,79 km/h
		Lauf 3:	00:10.253	128,14 km/h	00:08.604	02:00.763	147,44 km/h	02:19.620	108,29 km/h
11	516	<b>HÖBER Jörg</b>	NSU TT Einfalt						
		Lauf 1:	00:10.832	116,49 km/h	00:09.372	02:04.455	123,68 km/h	02:24.661	104,52 km/h
		Lauf 2:	00:11.017	115,67 km/h	00:09.214	02:02.259	124,16 km/h	02:22.491	106,11 km/h
		Lauf 3:	00:10.835	117,17 km/h	00:09.089	02:03.581	120,19 km/h	02:23.506	105,36 km/h
12	715	<b>FELDMANN Hannes</b>	Van Diemen RF 79						
		Lauf 1:	00:10.527	118,58 km/h	00:09.014	02:10.352	132,44 km/h	02:29.895	100,87 km/h
		Lauf 2:	00:10.343	118,29 km/h	00:08.726	02:01.834	133,43 km/h	02:20.904	107,31 km/h
		Lauf 3:	00:10.284	119,28 km/h	00:08.488	02:02.432	132,93 km/h	02:21.206	107,08 km/h
13	619	<b>BURKARDT Michael</b>	VW Polo						
		Lauf 1:	00:11.779	113,67 km/h	00:09.243	02:10.014	125,98 km/h	02:31.037	100,11 km/h
		Lauf 2:	00:12.075	108,86 km/h	00:08.960	02:05.904	126,89 km/h	02:26.939	102,90 km/h
		Lauf 3:	00:11.991	109,84 km/h	00:08.846	02:05.876	126,92 km/h	02:26.714	103,06 km/h



## Int. 39. AvD/MSCR Hauenstein-Bergrennen

2. bis 3. August 2008

Deutsche Bergmeisterschaft / DMSB Bergpokal

AvD Sportwagen-Berg-Cup / Classic Berg Cup

KW Gruppe H Berg-Cup



### Sektorzeiten & Speeds - Gruppe CBC

Rg.	Nr.	Startsektor	Speed vor Kurve 90°Kurve		Restsektor	Speed Ziel	Laufzeit	Speed (Lauf)	
14	690	<b>GEBERT Michael</b>	Renault Alpine 310						
		Lauf 1:	00:11.603	115,25 km/h	00:10.047	02:11.041	134,01 km/h	02:32.692	99,02 km/h
		Lauf 2:	00:11.511	119,03 km/h	00:09.593	02:04.574	138,07 km/h	02:25.679	103,79 km/h
		Lauf 3:	00:11.323	115,68 km/h	00:09.433	02:05.837	136,27 km/h	02:26.594	103,14 km/h
15	688	<b>THIER Michael</b>	Porsche 911						
		Lauf 1:	00:11.515	112,10 km/h	00:09.840	02:12.006	134,09 km/h	02:33.363	98,59 km/h
		Lauf 2:	00:11.089	115,00 km/h	00:09.484	02:05.850	142,64 km/h	02:26.425	103,26 km/h
		Lauf 3:	00:11.059	118,19 km/h	00:09.364	02:04.836	140,49 km/h	02:25.260	104,09 km/h
16	503	<b>NIEDERMANN Johannes</b>	NSU 1000C						
		Lauf 1:	00:11.310	113,10 km/h	00:09.361	02:11.275	121,31 km/h	02:31.947	99,51 km/h
		Lauf 2:	00:11.356	112,46 km/h	00:09.037	02:07.157	123,66 km/h	02:27.551	102,47 km/h
		Lauf 3:	00:11.308	113,48 km/h	00:08.967	02:08.079	120,66 km/h	02:28.355	101,92 km/h
17	617	<b>BÜHLER Reiner</b>	Peugeot 205						
		Lauf 1:	00:12.376	109,78 km/h	00:09.604	02:10.175	123,22 km/h	02:32.156	99,37 km/h
		Lauf 2:	00:12.060	110,38 km/h	00:09.463	02:07.794	123,12 km/h	02:29.319	101,26 km/h
		Lauf 3:	00:12.167	109,39 km/h	00:09.292	02:07.586	122,67 km/h	02:29.046	101,45 km/h
18	504	<b>SZOTT Roman</b>	NSU TT						
		Lauf 1:	00:11.608	111,93 km/h	00:09.012	02:11.675	121,36 km/h	02:32.297	99,28 km/h
		Lauf 2:	00:11.486	112,05 km/h	00:08.938	02:11.676	123,24 km/h	02:32.101	99,41 km/h
		Lauf 3:	00:11.394	112,38 km/h	00:08.731	02:13.368	120,72 km/h	02:33.494	98,51 km/h
19	618	<b>EIRICH Raimund</b>	VW Polo						
		Lauf 1:	00:12.398	106,38 km/h	00:09.240	02:13.811	122,62 km/h	02:35.450	97,27 km/h
		Lauf 2:	00:12.351	106,74 km/h	00:09.002	02:11.466	123,31 km/h	02:32.821	98,94 km/h
		Lauf 3:	00:12.177	107,29 km/h	00:08.891	02:10.608	122,91 km/h	02:31.678	99,69 km/h
20	700	<b>KNORRENSCHILD Dieter</b>	Kaimann Formel V						
		Lauf 1:	00:11.038	111,32 km/h	00:10.225	02:18.415	117,39 km/h	02:39.681	94,69 km/h
		Lauf 2:	00:10.823	121,50 km/h	00:09.712	02:13.268	125,04 km/h	02:33.806	98,31 km/h
		Lauf 3:	00:10.354	117,74 km/h	00:09.497	02:09.771	134,27 km/h	02:29.623	101,05 km/h
21	632	<b>GMEINDER Andreas</b>	VW Passat						
		Lauf 1:	00:13.606	101,08 km/h	00:09.588	02:21.084	107,80 km/h	02:44.279	92,04 km/h
		Lauf 2:	00:12.231	107,42 km/h	00:09.181	02:08.822	124,79 km/h	02:30.234	100,64 km/h
		Lauf 3:	00:12.208	107,31 km/h	00:09.178	02:07.293	125,73 km/h	02:28.679	101,70 km/h
22	508	<b>HOFMANN Gerhard</b>	NSU TT						
		Lauf 1:	00:11.627	108,62 km/h	00:09.178	02:15.765	115,50 km/h	02:36.570	96,57 km/h
		Lauf 2:	00:11.751	108,97 km/h	00:08.983	02:11.788	116,78 km/h	02:32.523	99,13 km/h
		Lauf 3:	00:11.678	108,84 km/h	00:09.085	02:14.370	114,60 km/h	02:35.134	97,46 km/h
23	502	<b>RABUS Leonhard</b>	NSU Einfalt TT						
		Lauf 1:	00:12.019	106,80 km/h	00:09.427	02:16.257	115,62 km/h	02:37.704	95,88 km/h
		Lauf 2:	00:11.906	107,19 km/h	00:09.382	02:15.049	116,40 km/h	02:36.339	96,71 km/h
		Lauf 3:	00:11.862	107,18 km/h	00:09.272	02:14.646	115,03 km/h	02:35.782	97,06 km/h
24	506	<b>SCHABACKER Pit</b>	NSU-Davidovic						
		Lauf 1:	00:12.253	107,64 km/h	00:09.964	02:22.778	118,04 km/h	02:44.996	91,64 km/h
		Lauf 2:	00:12.052	110,70 km/h	00:09.722	02:18.675	118,75 km/h	02:40.451	94,23 km/h
		Lauf 3:	00:11.976	111,24 km/h	00:09.595	02:17.350	113,89 km/h	02:38.923	95,14 km/h
	512	<b>NEUNER Bernhard</b>	NSU TT						
		Lauf 1:	00:12.998	96,44 km/h	00:10.106	02:51.552	42,40 km/h	03:14.657	77,67 km/h
		Lauf 2:	00:13.507	94,31 km/h	00:09.894	03:02.017	37,89 km/h	03:25.420	73,61 km/h
		Lauf 3:	00:13.443	95,15 km/h	00:09.935	*	* km/h	A	* km/h





## Int. 39. AvD/MSCR Hauenstein-Bergrennen

2. bis 3. August 2008

Deutsche Bergmeisterschaft / DMSB Bergpokal

AvD Sportwagen-Berg-Cup / Classic Berg Cup

KW Gruppe H Berg-Cup



### Sektorzeiten & Speeds - Gruppe CBC

Rg.	Nr.	Startsektor	Speed vor Kurve 90°Kurve		Restsektor	Speed Ziel	Laufzeit	Speed (Lauf)
518	<b>HÖLLERICH Nicola</b>		NSU TT					
	Lauf 1:	00:11.476	107,78 km/h	00:09.858	02:17.181	118,29 km/h	02:38.517	95,38 km/h
	Lauf 2:	00:11.715	108,73 km/h	00:10.658	*	* km/h	A	* km/h
	Lauf 3:	*	* km/h	*	*	* km/h	*	* km/h
647	<b>FRANK Rene</b>		BMW M3					
	Lauf 1:	00:10.124	139,12 km/h	00:08.248	01:55.149	154,81 km/h	02:13.522	113,24 km/h
	Lauf 2:	00:09.714	140,13 km/h	00:08.191	*	* km/h	A	* km/h
	Lauf 3:	*	* km/h	*	*	* km/h	*	* km/h